

BYPASS / STEEL WEDGES & PARTS



1 Bypass wedge showing wedge ends (chisel and blunt), middle, and rod end



3 Wedge dropper rod box



Adaptor **7**



8 Tapered wedge bit



Wedge plug **6**



5 Steel plug basket



1B



1A



2 Wooden plug

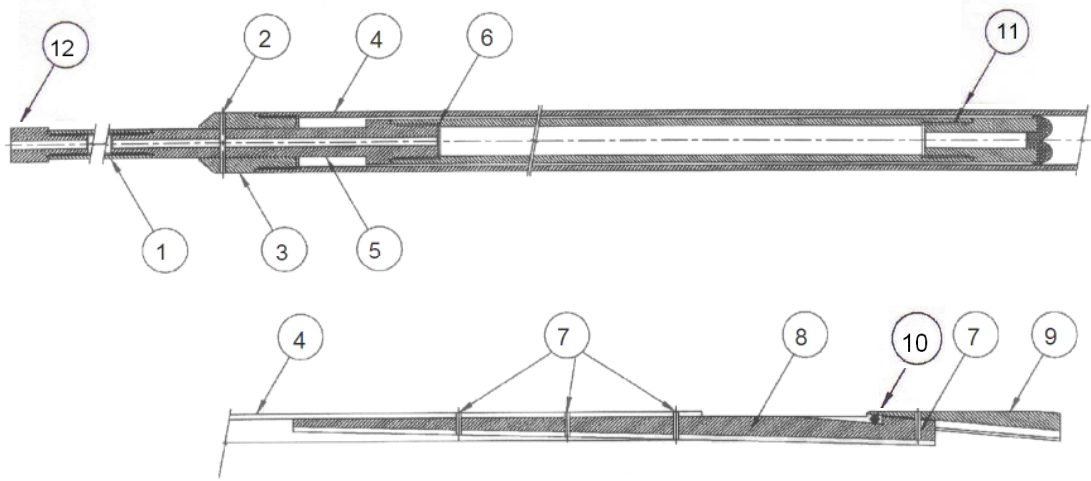
Description	Product Number		
	"B"	"N"	"H"
Full Chisel Wedge Assemblies (consists of 1 – 7)	595-ASM	596-ASM	597-ASM
1A - Bypass chisel wedge	595-00	596-00	597-00
2 - Wooden plug	595-03	596-03	597-03
3 - Wedge dropper -"W" rod box thread	595-01	596-01	596-01
Copper rivets (not shown) 2" x 5/16" round head	92-1005	92-1005	92-1005
5 - Steel plug basket	595-05	596-05	597-05
6 - Wedge plug with pin	595-06	596-06	597-06
7 - R/B to wedge plug adaptor	595-07	596-07	597-07

1B – Bypass blunt wedge – 15 1/2'	595-02GV	596-00GV	N/A
Underground Bypass Chisel Wedge – 11' L*	N/A	563933	N/A
Underground Bypass 2 pc Wedge *	595-2PCGV	596-2PCGV	N/A

* not shown

Items Not Included in Assembly – supplied by TIME	
Rod String Box to "W" Rod pin Sub Adapter	Available on request
Tapered Wedge Bit (see 8 above)	PLT – WDG – N, H, B
Locking Wedge Resin	420-121

B RETRIEVABLE WEDGE ASSEMBLY

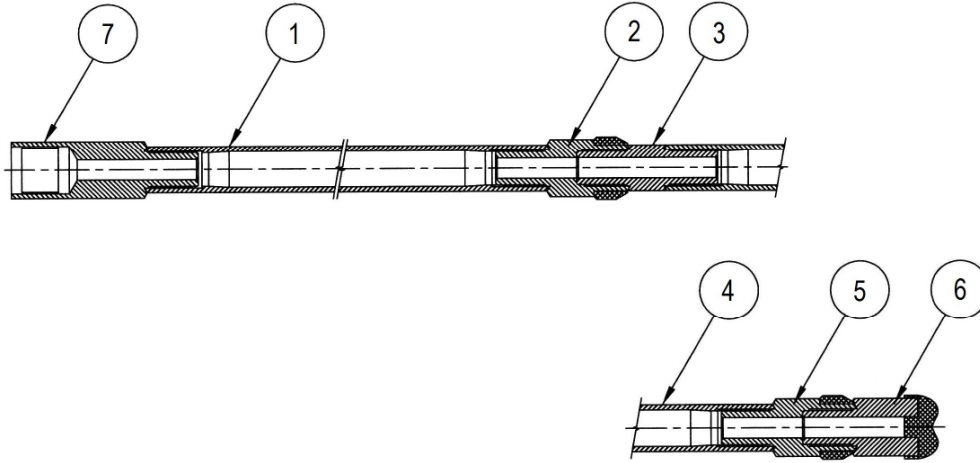


Ref No.	Product Number	Quantity Req'd	Description
Assembly	594-ASM	1	B Retrievable Wedge Assembly (consists of 1-9)
1	625-21	1	10 ft EW Drill Rod (less coupling)
2	625-49	1	Shear Pin (5" common nail)
3	594-05	1	Wedge Housing Collar
4	594-07	1	Wedge Housing
5	594-06	1	Retrieving Coupling
6	625-24	1	6 ft AW Drill Rod (less coupling)
7	625-50	4	Shear Pin & Blade Rivets (4" common nail)
8	594-02	1	Wedge Blade
9	594-03	1	Locking Wedge
10	594-08	1	Set Screw

Items Not Included in Assembly – supplied by TIME			
11	627-11	1	AWC Concave Bit
12	Call for info	1	Rod String Box to EW Rod Pin Sub Adapter

Please Note: TIME will make adapters to your thread specifications

B RETRIEVABLE REAMER ASSEMBLY



Ref. No.	Product Number	Quantity Req'd	Description
Assembly	594-RMR-ASM	1	B Retrievable Reamer Assembly (consists of items 1-6)
1	625-02	1	5 ft AW Drill Rod (less coupling)
2	627-10	3	BAWC Reaming Bit
3	625-12	3	AW Rod Coupling
4	625-16	3	2 ft AW Drill Rod (less coupling)
5	627-12	1	BAWC Reaming Shell
6	627-13	1	BAWC Ball Bit

Items Not Included in Assembly - supplied by TIME			
	Call for info	1	Rod String Box to AW Rod Pin Sub Adapter
	625-51	1	B Solid Spindle Assembly
	627-15	1	B Inner Tube Dressing Bit

Extra Items Required (not illustrated):

- Riveting plate (to rivet blade to housing)
- Ball peen hammer
- Loctite
- Punch (long – 3 ½" nail size)
- EW rod shims (orienting sub adjusting)
- Orienting sub (AW pin thread to connect to wedge)
- 5 ft B outer tube
- 5 ft B inner tube
- Corelifter case pilot

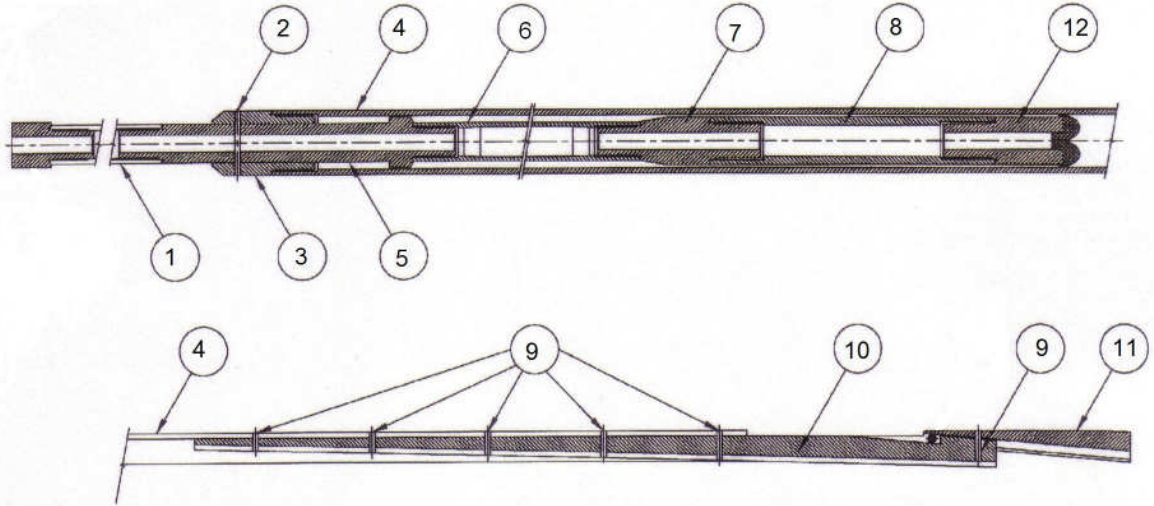
Extra Bits Required

- B inner tube concave bit
- B impregnated tapered coring bit
- B standard reaming shell

Bits are available from TIME on request.

Please Note: TIME will make adapters to your thread specifications

N RETRIEVABLE WEDGE ASSEMBLY

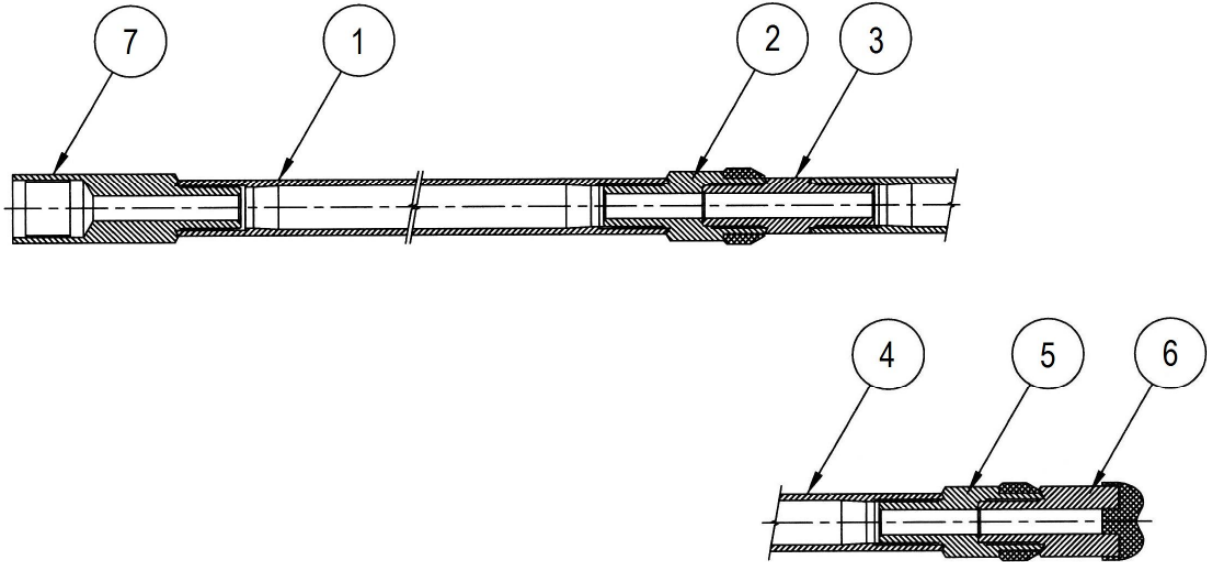


Ref. No.	Product Number	Quantity Req'd	Description
Assembly	625-ASM	1	N Retrievable Wedge Assembly (consists of 1-11)
1	625-19	1	10 ft AW Drill Rod (less coupling)
2	625-49	1	Shear Pin (5" common nail)
3	625-08	1	Wedge Housing Collar
4	625-11	1	Wedge Housing
5	625-09	1	Retrieving Coupling
6	625-33	1	4 ft AW Drill Rod (less coupling)
7	625-07	1	Tapered Sub (AW Rod Pin to BW Rod Pin)
8	625-03	1	1 ft BW Drill Rod (less coupling)
9	625-50	6	Shear Pin & Blade Rivets (4" common nail)
10	625-14	1	Wedge Blade
11	625-15	1	Locking Wedge

Items Not Included in Assembly – supplied by TIME			
12	627-00	1	BWC Concave Bit
13	Call for info	1	Rod String Box to AW Rod Pin Sub Adapter

Please Note: TIME will make adapters to your thread specifications

N RETRIEVABLE REAMER ASSEMBLY



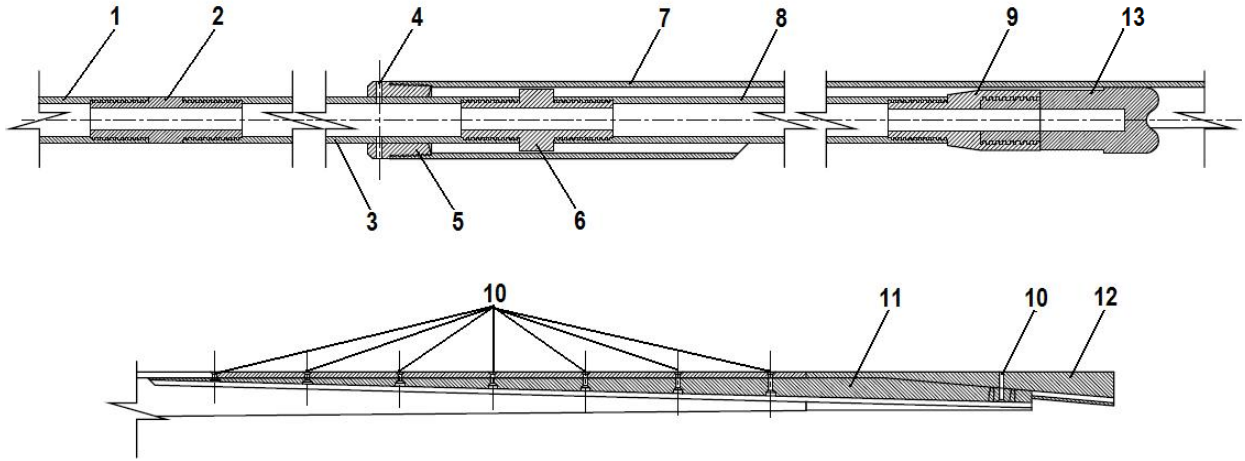
Ref. No.	Product Number	Quantity Req'd	Description
Full Assembly	625-RMR-ASM	1	N Retrievable Reamer Assembly (consists of items 1-6)
1	625-05	1	5 ft BW Drill Rod (less coupling)
2	627-02	3	NBWC Reaming Bit
3	625-13	3	BW Rod Coupling
4	625-04	3	2 ft BW Drill Rod (less coupling)
5	627-03	1	NBWC Reaming Shell
6	627-01	1	NBWC Ball Bit
Items Not Included in Assembly – supplied by TIME			
7	To be determined	1	Rod String Box to BW Rod Pin Sub Adapter
	625-52	1	N Solid Spindle Assembly
	627-14	1	N Inner Tube Dressing Bit

- Extra Items Required (not illustrated):**
- Riveting plate (to rivet blade to housing)
 - Ball peen hammer
 - Loctite
 - Punch (long – 4" nail size)
 - AW rod shims (orienting sub adjusting)
 - Orienting sub (AW pin thread to connect to wedge)
 - 5 ft N outer tube
 - 5 ft N inner tube
 - Corelifter case pilot

- Extra Bits Required**
- N inner tube concave bit
 - N impregnated tapered coring bit
 - N standard reaming shell
- Bits are available from TIME on request.*

Please Note: TIME will make adapters to your thread specifications

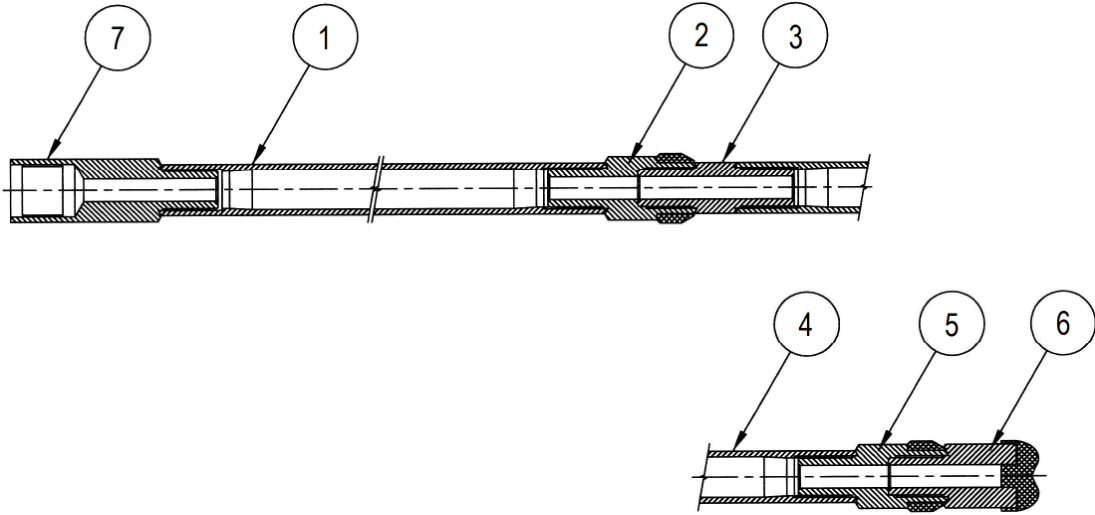
H RETRIEVABLE WEDGE ASSEMBLY



Ref. No.	Product Number	Quantity Req'd	Description
Full Assembly	629-ASM	1	H Retrievable Wedge Assembly (consists of 1-12)
1	625-20	1	10 ft BW Drill Rod (less coupling)
2	625-13F	1	BW Rod Coupling
3	629-07	1	Wedging Barrel (2 ft BW Drill Rod)
4	625-49	1	Shear Pin (5" common nail)
5	629-04	1	Wedge Housing Collar
6	629-08	1	Retrieving Coupling
7	629-03	1	Wedge Housing
8	625-05	1	5 ft BW Drill Rod (less coupling)
9	629-09	1	Tapered Sub (BW Rod Pin to NW Rod Box)
10	625-50	8	Shear Pin & Blade Rivets (4" common nail)
11	629-00	1	Wedge Blade with Retaining Plate
12	629-01	1	Locking Wedge with Slide Plates
Items Not Included in Assembly - supplied by TIME			
13	629-13	1	NWC Concave Bit
	Call for info	1	Rod String Box to BW Rod Pin Sub Adapter

Please Note: TIME will make adapters to your thread specifications

H RETRIEVABLE REAMER ASSEMBLY



Ref. No.	Product Number	Quantity Req'd	Description
Full Assembly	629-RMR-ASM	1	H Retrievable Reamer Assembly (consists of items 1-6)
1	625-44	1	5 ft NW Drill Rod
2	629-12	3	HNWC Reaming Bit
3	625-75F	3	NW Rod Coupling
4	625-69	3	2 ft NW Drill Rod
5	629-11	1	HNWC Reaming Shell
6	629-10	1	HNWC Ball Bit
Items Not Included in Assembly - supplied by TIME			
7	Call for info	1	Rod String Box to NW Rod Pin Sub Adapter

Extra Items Required (not illustrated):

- Riveting plate (to rivet blade to housing)
- Ball peen hammer
- Loctite
- Punch (long – 4” nail size)
- BW rod shims (orienting sub adjusting)
- Orienting sub (BW pin thread to connect to wedge)
- 5 ft H outer tube
- 5 ft H inner tube
- Corelifter case pilot

Extra Bits Required

- H inner tube concave bit
- H impregnated tapered coring bit
- H standard reaming shell

Bits are available from TIME on request.

Please Note: TIME will make adapters to your thread specifications