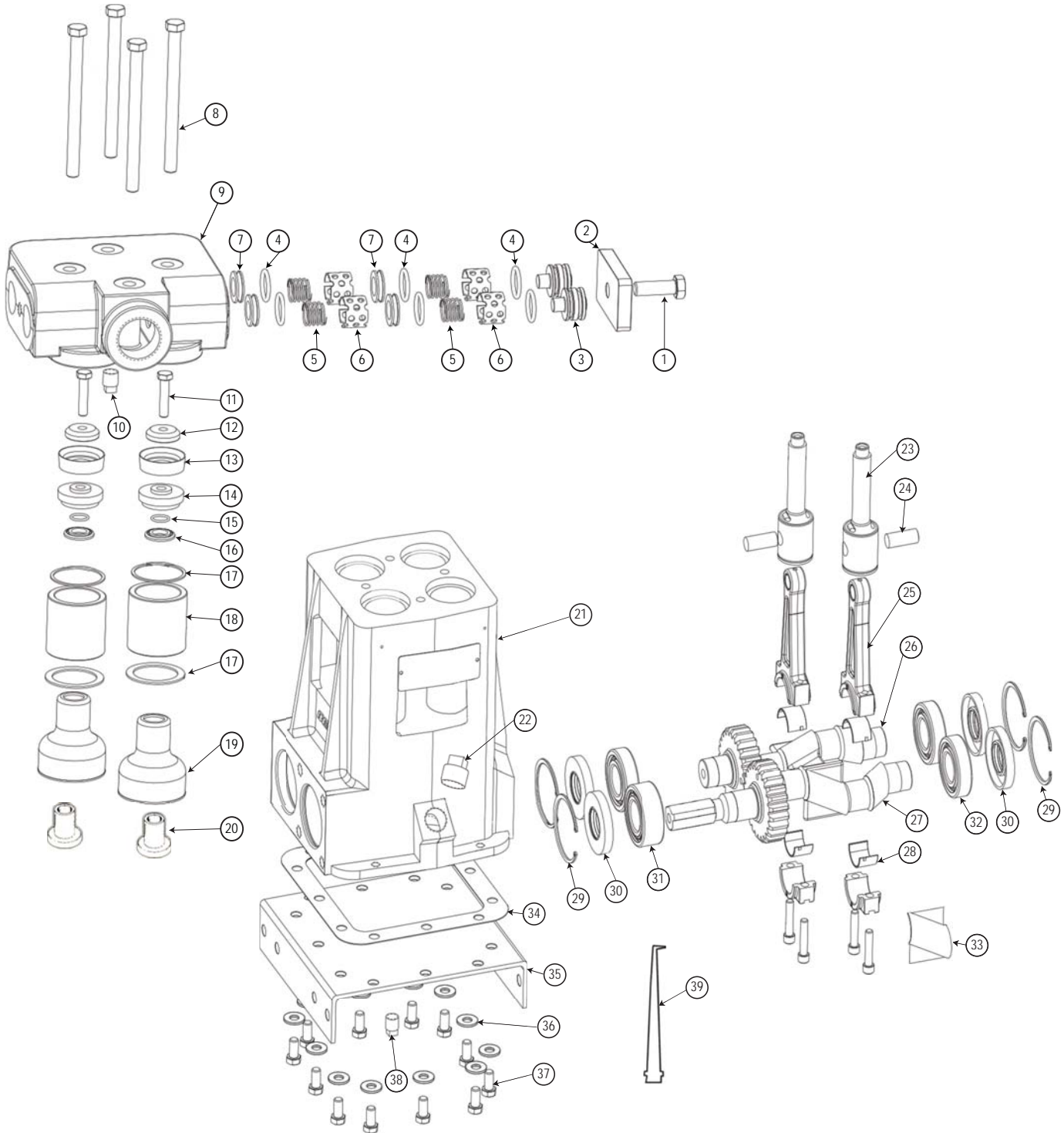


PUMPS - FMC water pumps

E0413 Parts Diagram



Performance Table FMC E0413

Pump Model	Piston Diameter (in)	Displacement (GAL/REV)	Max Pressure (PSI)	Pump Capacity (GPM) @ Input Speed (RPM)				
				390 RPM	400 RPM	425RPM	450RPM	575 RPM
E0413	1.625	0.036	600	14.01	14.36	15.26	16.16	20.65



PUMPS - FMC E0413C

FMC - E0413
PN - 160-03



Specifications:

- Standard Suction Size: 1.25" NPT
- Standard Discharge Size: 0.75" NPT
- Pump Weight (Average): 80 lbs

Features:

- Fluid end material of ductile iron
- Nitrided crankshaft resists corrosion
- Designed for easy, economical maintenance
- Cast iron pump case
- Special raised seat valves and hardened valve chamber available for abrasives

Item	Part Name	Qty	Part #
1	Hex Cap Screw ½"-13 x 1 ½" (plated steel)	2	1100064
2	Clamp, Valve Cover (steel)	2	1255887
3	Valve Cover (steel)	4	1219614
4	O-ring, 1-3/16" O.D.	12	3264075
5	Valve cage (SS)	8	1219610
6	Valve Disc & Spring Assembly (SS)	8	5253499
7	Seat, Valve (SS)	8	5260142
8	Cap screw, 3/8"-16 x 5"	4	1101262
9	Valve Chamber (cast iron)	1	1247208
10	Pipe Plug, ¼" galv.	1	1109987
11	Cap screw, 5/16"-18 x 1 ½" (SS)	4	1284516
12	Packing Washer	4	5257986
13	Packing	4	5257807
14	Packing holder	4	1282557
15	"O" Ring	4	1101339
16	Washer, Umbrella	4	1269388
17	Gasket Cylinder	8	A91684
18	Cylinder, ceramic	4	1241364
19	Umbrella	4	1279148
20	Sleeve, Crosshead	4	1218743
21	Case, Pump (cast iron)	1	1273545
22	Plug, oil fill (3/4" pipe)	2	1105060
23	Crosshead (cast iron)	4	1216823
24	Wrist pin	4	1219650
25	Conn. Rod Assembly	4	P509546
26	Crankshaft Assembly, Driven	1	P509560
27	Crankshaft Assembly, Drive	1	P510882
28	Bearing Insert, Conn Rod (pair)	4	P510834
29	Snap Ring (N5000-244)	4	1118553
30	Seal, Oil	4	1101095
31	Bearing (N.D. 5206)	1	1104508
32	Bearing (N.D. 1206)	3	1104444
33	Oil Slinger	2	P500359
34	Gasket, Pump Base	1	1273559
35	Mounting Base, Pump	1	1280633
36	Wave Lock Washer, 3/8", S'proof	12	1177455
37	Cap screw, 3/8" - 16 x ¾"	12	1100008
38	Magnetic Drain Plug, ¼" pipe	1	1101305
39	Valve Seat Remover	1	1250638

