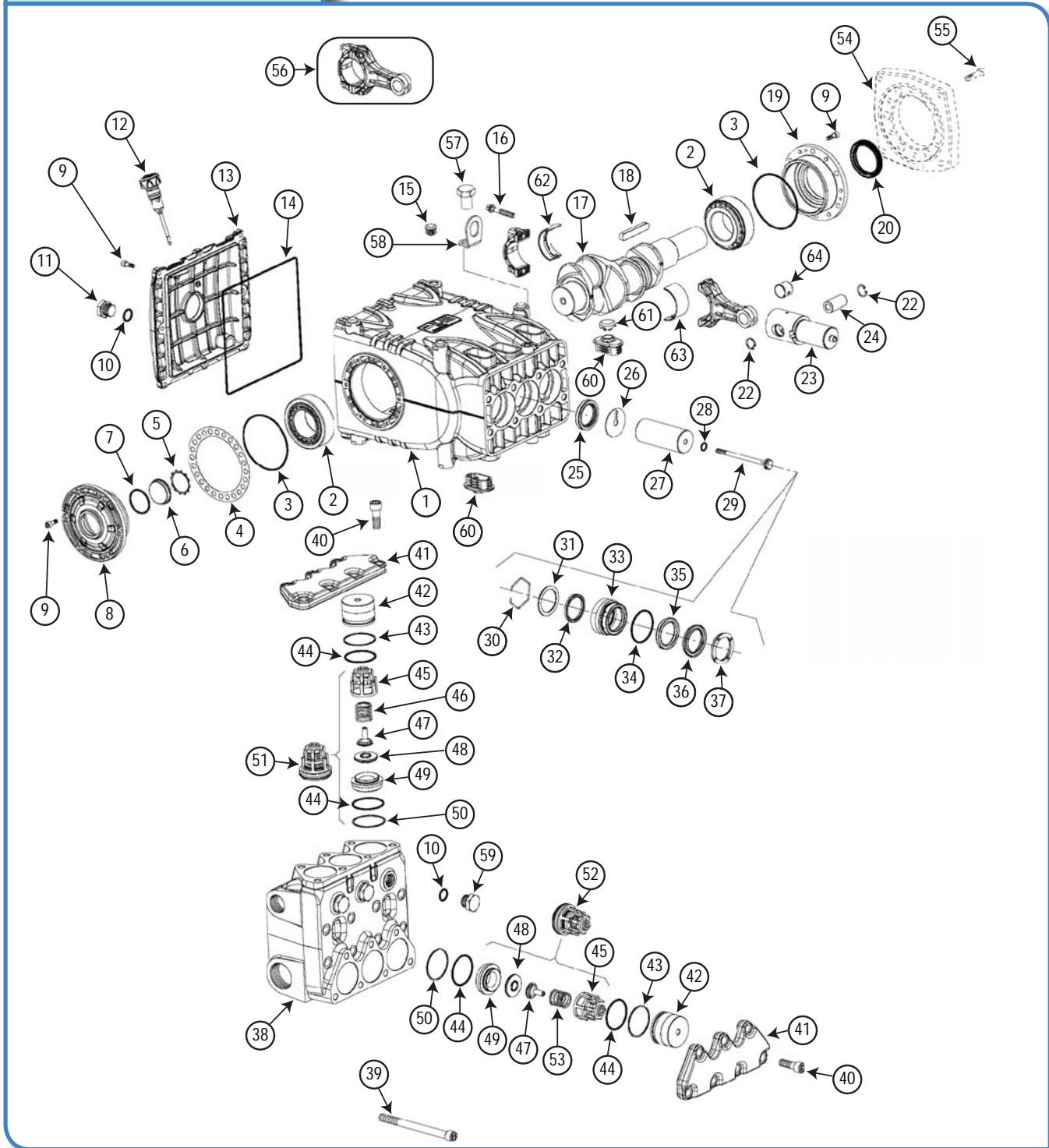


PUMPS - Pratisoli water pumps

Pratisoli KF Series

The Pratisoli range of triplex pumps, developed in more than 50 years of activity in the field, counts over 60 different models including flow rates up to 420 liters per minute, pressures up to 1500 bar, and powers up to 150 HP. All models are designed and produced to stand the toughest working conditions.

KF Series Parts Diagram



Pratissoli KF Series

**KF 40
PN-160-17**



For other models, please contact us.

Construction

- Triplex high pressure plunger pump, four versions in one
- Symmetrical crankcase for easy "left to right" conversion
- Single P.T.O. shaft, d. 40
- Plunger seal design: HP seal + LH seal with cooling chamber in low pressure
- Long life Suction/Delivery in line valves with spherical profile
- Splash lubrication

Material Quality

- Patent pending pump body in die cast aluminum
- Nickel-treated stainless steel head
- Conical shaft bearings
- Aluminum alloy connecting rods
- Forged steel crankshaft
- Crankshaft sealings in viton
- Guide pistons in surface treated cast iron
- Full ceramic plungers
- Stainless steel valves

REPAIR KITS FOR KF40

A	Plunger packing kit	KIT2020IPR		
B	Suction valves kit	KIT2012IPR		
C	Outlet valves kit	KIT2013IPR		
D	Complete seals kit	KIT2021IPR		
E	Conrod bushing kit	KIT2135IPR (STD)	KIT2154IPR(+.25)	KIT2155IPR (+.50)

Item	Part Number	Description	Kit	Qty	Item	Part Number	Description	Kit	Qty
1	71010022	Crankcase		1	35	90277400	Restop Ring Ø 30	A-D	3
2	91859000	Tapered Roller Bearing 33210/O		2	36	90281800	Restop Ring Ø 36	A-D	3
3	90391800	O-Ring Ø 94,92x2,62 (3375)	D	2		90283800	Restop Ring Ø 40	A-D	3
4	71220081	Shim		1		90275800	Packing Ø 28 H.P.	A-D	3
	71220381	Shim		1		90277000	Packing Ø 30 H.P.	A-D	3
5	90075600	Retaining Ring ZJ45	D	1		90282000	Packing Ø 36 H.P.	A-D	3
6	70211801	Sight Glass, Oil Level		1		90283200	Packing Ø 40 H.P.	A-D	3
7	90387700	O-Ring Ø 39,34x2,62 (3156)	D	1		70100351	Head Ring Ø 28	D	3
8	71150122	Crankshaft End Cap		1	37	70100451	Head Ring Ø 30	D	3
9	99186700	Screw M6x18 UNI5931 Z.		20		71100251	Head Ring Ø 36	D	3
10	90384100	O-Ring Ø 17,13x2,62 (3068)	D	4		71100351	Head Ring Ø 40	D	3
11	98218300	Plug G 1/2" x13 - NICKEL		1		71121036	Pump Head Ø 28-30		1
12	98212000	Dip Stick		1		71125036	Pump Head Ø 28-30 - NPT		1
13	71160022	Crankcase Cover		1	38	71121136	Pump Head Ø 36		1
14	90400000	O-Ring Ø 215x3	D	1		71125136	Pump Head Ø 36 - NPT		1
15	98206000	Dust Plug Ø 15		4		71121236	Pump Head Ø 40		1
16	99313800	Connecting Rod Bolt		6		71125236	Pump Head Ø 40 - NPT		1
17	71020035	Crankshaft		1	39	99448000	Screw M12x150 UNI5931		8
18	91500000	Drive Key		1	40	99429500	Screw M12x35 UNI5931		14
19	71150022	Crankshaft End Cap PTO		1	41	71210136	Valve Cover Plate		2
20	90170000	Crankshaft Oil Seal Ø 50x65x8 - VITON	D	1	42	71211170	Valve Plug		6
22	90060600	Retaining Ring Ø 20 UNI7437		6	43	90525000	Anti-extrusion Ring Ø 50,9x55x1,5	D	6
23	71050015	Plunger Guide		3	44	90388900	O-Ring Ø 48,89x2,62 (3193)	D	12
24	97743000	Wrist Pin Ø 20x38		3	45	36204551	Valve Cage		6
25	90167800	Plunger Oil Seal Ø 38x52x7	D	3	46	94755000	Spring Ø 25,2x26		3
26	96714000	Flinger Washer Ø 10x50x1		3	47	36208651	Valve Guide		6
27	71040309	Plunger Ø 30		3	48	36208502	Valve Poppet		6
	71040409	Plunger Ø 36		3	49	36204156	Valve Seat		6
	71040509	Plunger Ø 40		3	50	90524000	Anti-extrusion Ring Ø 49,5x54x1,5	D	6
	71040609	Plunger Ø 28		3	51	36713701	Delivery Valve Assembly	C	3
28	90367100	O-Ring Ø 11x2 (11020) - 90Sh.	D	3	52	36713601	Inlet Valve Assembly	B	3
29	71219566	Plunger Bolt		3	53	94754000	Spring Ø 24,7x27		3
30	90079700	Retaining Ring Ø 52 UNI7437		3	54	10067720	Hydraulic Flange		1
31	71217670	Packing Washer Ø 28		3	55	99309900	Screw M8x35 UNI5931 Z.		6
	71217770	Packing Washer Ø 30		3	56	71030701	Connecting Rod Complete		3
32	71218070	Packing Washer Ø 36		3	57	99512000	Screw M16x1,5x25 UNI5740 8.8 Z.		1
	71218270	Packing Washer Ø 40		3	58	71223074	Lifting Point		1
33	90275000	Packing Ø 28 L.P.	A-D	3	59	98218100	Plug G 1/2" x13 - SS		3
	90276000	Packing Ø 30 L.P.	A-D	3	60	71225851	Plunger Plug		6
	90280000	Packing Ø 36 L.P.	A-D	3	61	71225951	Dust Cap		3
	90283000	Packing Ø 40 L.P.	A-D	3		90924300	Connecting Rod Bushing - Inf.	E	3
34	71215670	Packing Support Ø 28		3	62	90924400	Connecting Rod Bushing +0.25- Inf.	E	3
	71215370	Packing Support Ø 30		3		90924500	Connecting Rod Bushing +0.50 - Inf.	E	3
	71215470	Packing Support Ø 36		3		90924000	Connecting Rod Bushing - Sup.	E	3
	71215570	Packing Support Ø 40		3	63	90924100	Connecting Rod Bushing +0.25 - Sup.	E	3
35	90389100	O-Ring Ø 52,07x2,62	A-D	3		90924200	Connecting Rod Bushing Ila +0.5-0Sup.	E	3
	90275500	Restop Ring Ø 28	A-D	3	64	90911000	Wrist Pin Bushing		3

