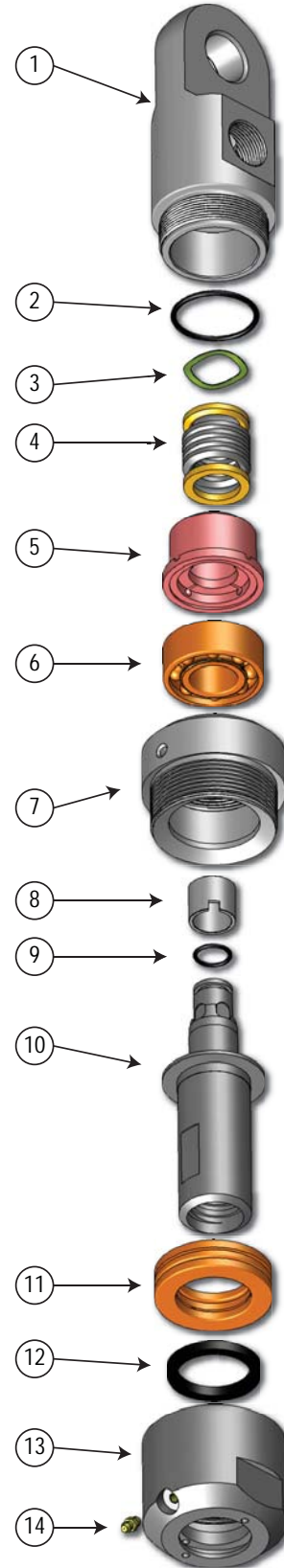
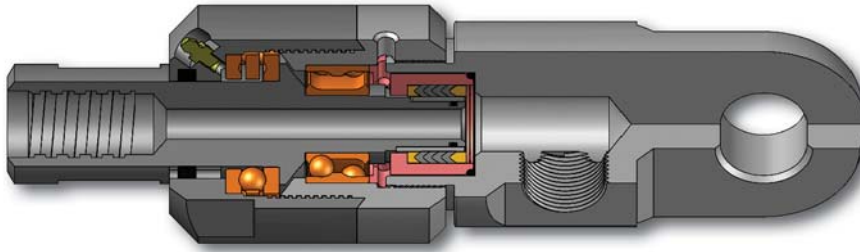


# Drilling & Exploration - Water Swivel

## Compact Plus Water Swivel



Item	Description	Part Number
<b>Full Assembly Compact Plus Water Swivel</b>		
	• AW Rod Box	92-13-100
	• Rotating Capacity: 10,000 lbs/4,540 kg	
	• Static Capacity: 20,000 lbs/9,000 kg	
Repair Kit (see below)		92-13-150
1	Cap, Swivel	92-12-101
2	O-Ring	568-225-90
3	Spring, Wave Washer	92-12-111
4	Assembly, Seal Kit (See Below)	92-12-150
5	Housing, Packing	92-12-104
6	Bearing, Angular Contact	92-12-114
7	Body, Upper	92-13-103
8	Sleeve, Wear	92-13-105
9	O-Ring	568-116-90
10	Spindle	92-13-106
11	Bearing, Thrust	92-13-115
12	Gasket, Felt	92-12-113
13	Body, Lower	92-13-110
14	Grease Fitting	90-29-020

### \*\* 92-13-150 Repair Kit Includes \*\*

Qty	Description
3 Sets	O-Rings
2	Spring, Wave Washers
2	Assembly, Seal Kit
2	Sleeve, Wear
1	Bearing, Angular Contact
2	Gasket, Felt
1	Bearing, Thrust

