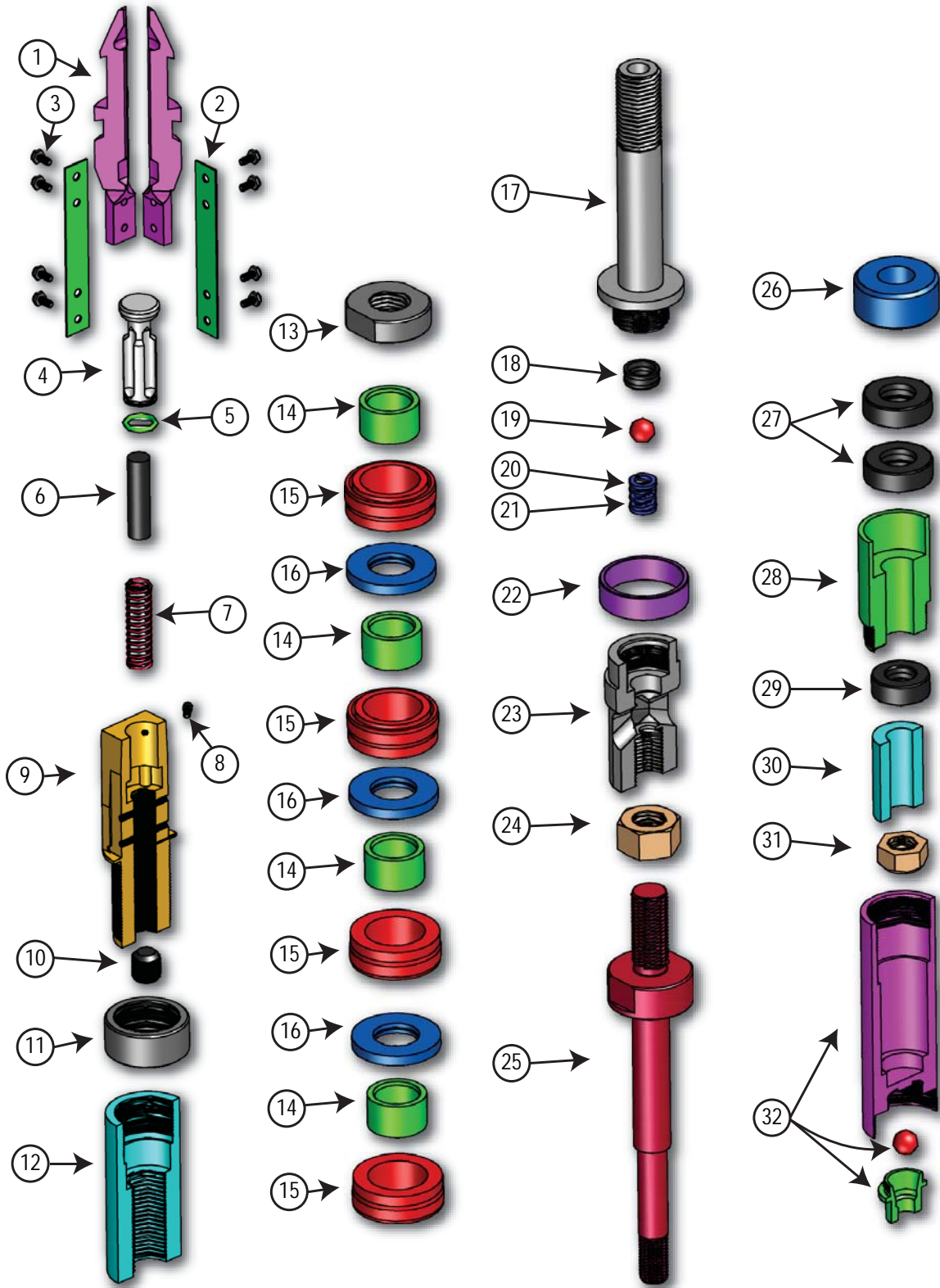


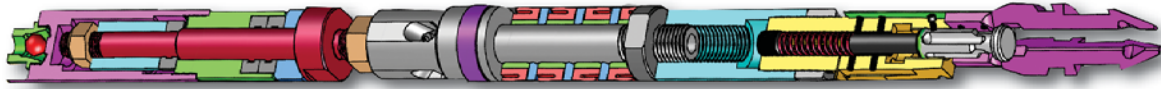
Drilling & Exploration - Q/L Head Assy

Quad Latch Head Assembly



Drilling & Exploration - Q/L Head Assy

Quad Latch Head Assembly



| Item | Description | Part Numbers for Each Size | | |
|------|---------------------------------------|----------------------------|-------------|-------------|
| | | B | N | H |
| | Head Assembly | 92-45-302 | 92-45-402 | 92-45-502 |
| 1 | Quad Latch Finger | 92-44-301 | 92-44-401 | 92-44-501 |
| 2 | Leaf Spring | 92-44-305 | 92-44-405 | 92-44-505 |
| 3 | Cap Screw | 92-44-326 | 92-44-526 | 92-44-526 |
| 4 | Piston | 92-44-302 | 92-44-402 | 92-44-502 |
| 5 | O-Ring | 568-015-90 | 568-117-90 | 568-119-90 |
| 6 | Push Rod | 92-44-306 | 92-44-406 | 92-44-506 |
| 7 | Compression Spring | 92-44-318 | 92-44-418 | 92-44-518 |
| 8 | Stop Screw | 92-44-504 | 92-44-404 | 92-44-504 |
| 9 | Head Base | 92-44-303 | 92-45-403 | 92-44-503 |
| 10 | Set Screw | 92-44-327 | 92-44-427 | 92-44-527 |
| 11 | Lock Nut, Adapter | 92-44-307 | 92-45-407 | 92-44-507 |
| 12 | Adapter, Base Shaft | 92-44-308 | 92-45-408 | 92-45-508 |
| 13 | Lock Nut, Shaft | 92-44-309 | 92-45-409 | 92-45-509 |
| 14 | Spacer, Pump-In Seal | n/a | 92-45-410 | 92-44-510 |
| 15 | Seal, Pump-In | 92-44-353 | 92-44-453 | 92-44-553 |
| 16 | Washer, Thrust | 92-45-311 | 92-45-411 | 92-45-511 |
| 17 | Shaft, Pump-In | 92-45-313 | 92-45-413 | 92-45-513 |
| 18 | Bushing, Water Retention | 90-29-381 | 90-29-381 | 90-29-381 |
| 19 | Ball, Water Retention | 90-21-421 | 90-21-421 | 90-21-421 |
| 20 | Spring, Water Retention, Green, Light | 90-29-382 | 90-29-382 | 90-29-382 |
| 21 | Spring, Water Retention, Blue, Medium | 90-29-383 | 90-29-383 | 90-29-383 |
| 22 | Landing Shoulder | 90-21-309-2 | 90-21-409-2 | 90-21-509-2 |
| 23 | Latch Body, Lower | 90-21-309-3 | 90-21-409-3 | 90-21-509-3 |
| 24 | Jam Nut | 90-21-310 | 90-21-410 | 90-21-510 |
| 25 | Spindle | 90-21-311 | 90-21-411 | 90-21-511 |
| 26 | Spacer, Valve Replacement | 92-45-314 | 92-45-414 | 92-45-514 |
| 27 | Bearing, Spindle, Upper | 90-21-314 | 90-21-414 | 90-21-514 |
| 28 | Bushing, Spindle | 90-21-315 | 90-21-415 | 90-21-515 |
| 29 | Bearing, Hanger | 90-21-314 | 90-21-424 | 90-21-414 |
| 30 | Spacer, Spring Replacement | 92-45-318 | 92-45-418 | 92-45-518 |
| 31 | Lock Nut | 90-21-317 | 90-21-417 | 90-21-517 |
| 32 | Assembly, Inner Tube Cap | 90-21-319 | 90-21-419 | 90-21-519 |

