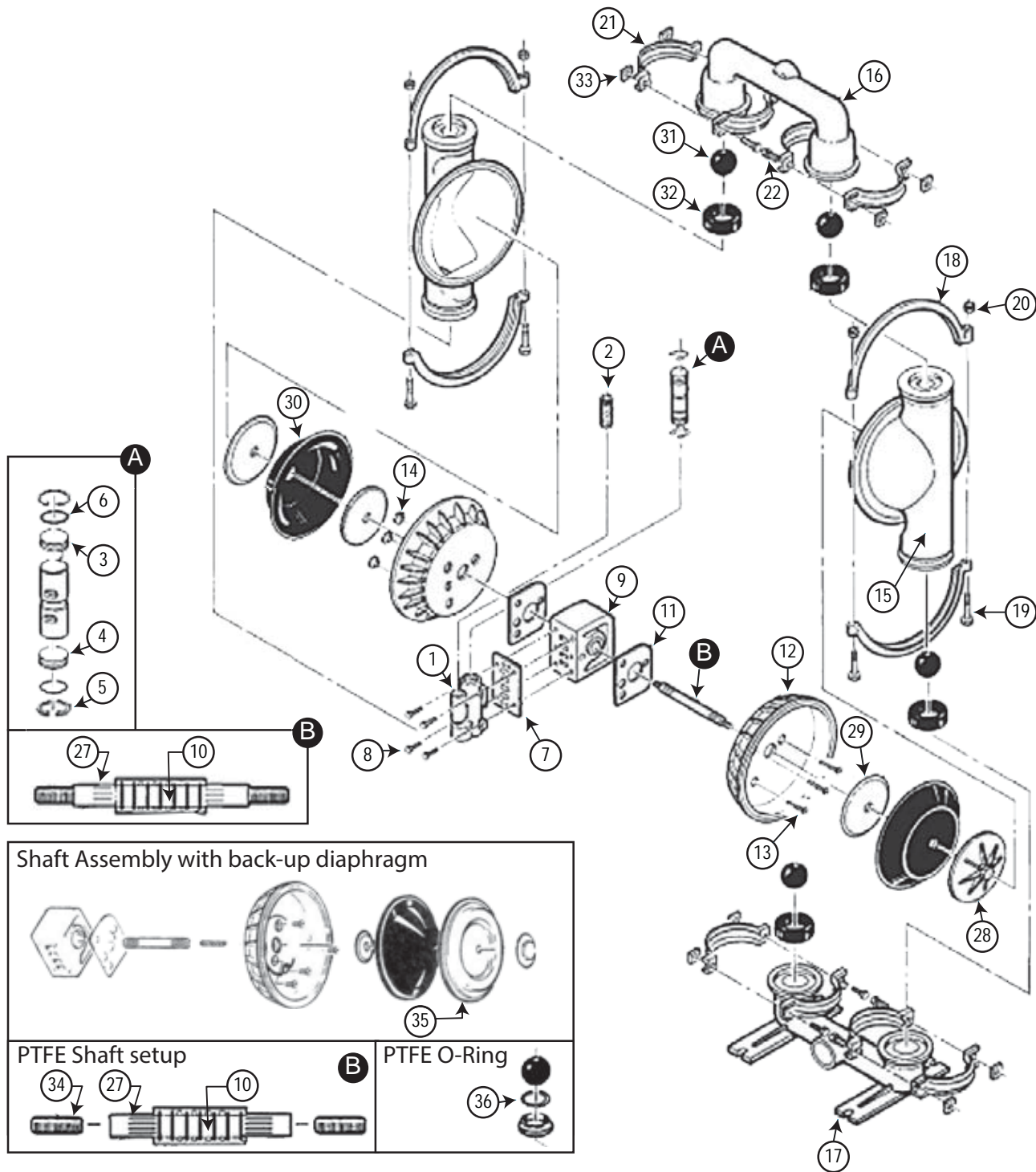
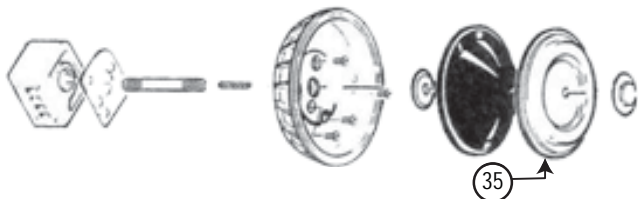


# PUMPS - NOMAD Diaphragm pumps

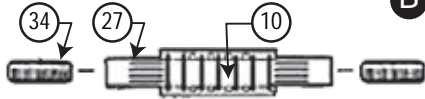
## NTG50 Parts Diagram



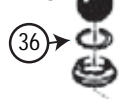
Shaft Assembly with back-up diaphragm



PTFE Shaft setup



PTFE O-Ring



# PUMPS - NOMAD NTG50

**NTG50**



**NTG50 2" Aluminum Diaphragm Pump Assemblies**

**Part Number**

**Description**

Part Number	Description
50-2693	Includes Neoprene Diaphragm, Valve Ball and Valve Seat
50-2696	Includes Buna Diaphragm, Valve Ball and Valve Seat
50-2697	Includes Nordel Diaphragm, Valve Ball and Valve Seat
50-26964	Includes Hytrel Diaphragm, Valve Ball and Valve Seat
50-2698	Includes Viton Diaphragm, Valve Ball and Valve Seat
50-2699	Includes Santoprene Diaphragm, Valve Ball and Valve Seat
50-2691	Includes PTFE Diaphragm, Valve Ball and Valve Seat

Air Inlet .....	19 mm (3/4")
Inlet .....	51 mm (2")
Outlet .....	51 mm (2")
Suction Lift .....	6.4 m Dry (21')
	9.5 m Wet (31')
Max. Flow Rate .....	617 lpm (163 gpm)
Max. Size Solids .....	6.4 mm (1/4")
Height .....	668 mm (26.3")
Width .....	404 mm (15.9")
Depth .....	343 mm (13.5")

H2O flow rates listed

Caution: Do not exceed 8.6 bar (125 psig) air supply pressure.

**PTFE Diaphragms: reduce flow by 25%**

Item	Description	Qty	Part Number	Item	Description	Qty	Part Number	
1	Air Valve Assembly	1	N08-2000-07	28	Outer Piston	2	N08-4550-01	
	Air Valve Assembly Gold	1	N08-2012-07			2	N08-4600-01	
2	Air Valve Screen	1	N08-2500-07	29	Inner Piston	2	N08-3700-01	
3	Air Valve End Cap w/ Guide (Top)	1	N08-2300-23			2	N08-3750-01	
4	Air Valve End Cap w/out Guide (Bottom)	1	N08-2330-23	30	Diaphragm Neoprene	2	N08-1010-51	
5	Air Valve Snap Ring	2	N08-2650-03		Diaphragm Buna	2	N08-1010-52	
6	Air Valve Cap O-ring	2	N08-2390-52		Diaphragm Viton	2	N08-1010-53	
7	Air Valve Gasket	1	N08-2600-52		Diaphragm Nordel	2	N08-1010-54	
8	Air Valve Screw 5/16" - 18 x 2 1/4"	4	N08-6000-08		Diaphragm PTFE	2	N08-1010-55	
9	Center Block	1	N08310001225		Diaphragm Hytrel	2	N08-1010-56	
10	Center Block TRACKER™ Seal	7	N08321055225		Diaphragm Santoprene	2	N08-1010-58	
11	Block Gasket	2	N08-3520-52		Valve Ball Neoprene	4	N08-1080-51	
12	Air Chamber	2	N08-3650-01		Valve Ball Buna	4	N08-1080-52	
13	Air Chamber Screw 3/8" - 16 x 4"	4	N08-6200-08		Valve Ball Viton	4	N08-1080-53	
14	Air Chamber Cone Nut 3/8" - 16	4	N08-6550-08	31	Valve Ball Nordel	4	N08-1080-54	
15	Liquid Chamber	2	N08-5000-01		Valve Ball PTFE	4	N08-1080-55	
16	Discharge Manifold	1	N08-5020-01		Valve Ball Hytrel	4	N08-1080-56	
17	Inlet Manifold	1	N08-5080-01		Valve Ball Santoprene	4	N08-1080-58	
18	Large Clamp Band Assembly	2	N08-7300-08		Valve Seat Neoprene	4	N08-1120-51	
19	Large Carriage Bolt 3/8" - 16 x 3"	4	N08-6120-08		Valve Seat Buna	4	N08-1120-52	
20	Large Hex Nut 3/8" - 16	4	N08-6420-08		Valve Seat Viton	4	N08-1120-53	
21	Small Clamp Band Assembly	4	N08-7100-08		32	Valve Seat Nordel	4	N08-1120-54
22	Small Carriage Bolt 5/16" - 18 x 1-3/8"	8	N08-6050-08			Valve Seat PTFE	4	N08-1120-55
23	Muffler (Not Shown)	1	N08-3510-99			Valve Seat Hytrel	4	N08-1120-56
24	Check Ball (Not Shown)	1	N08-1450-51	Valve Seat Santoprene		4	N08-1120-58	
25	Check Body (Not Shown)	1	N08-3550-01	33		Small Hex Nut 5/16"-18	8	N08-6450-08
26	Pipe Nipple (Not Shown)	1	N08-7420-08			Small Hex Nut 5/16"-18 PTFE	8	N08-6400-08
27	Shaft	1	N0838000307	34		Shaft Stud 1/2" - 20 x 1 - 7/8"	2	N08-6152-08
		1	N0838200307	35		Back-up Diaphragm	2	N08-1060-52
				36		PTFE Valve Seat O-Ring	4	N08-1200-55
				37		Washer, Flat (Not Shown)	8	N0867200770

