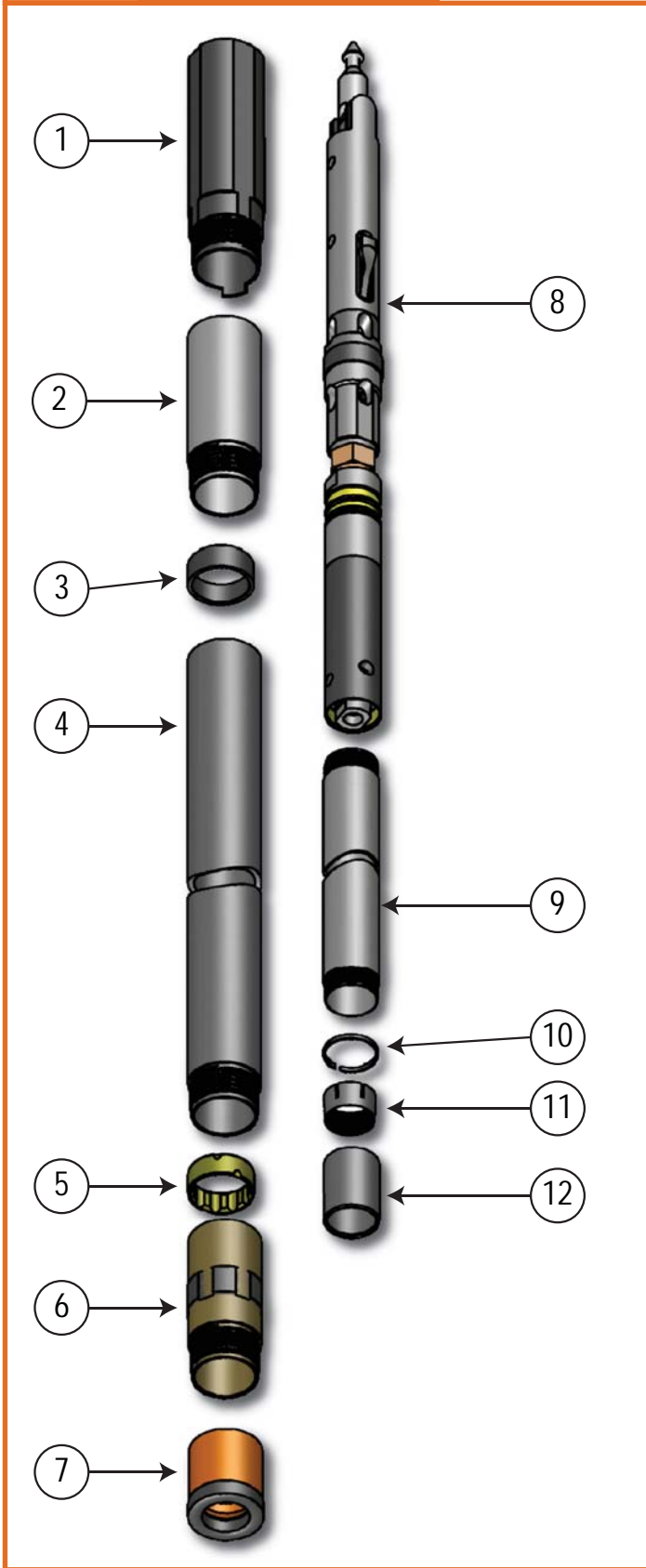
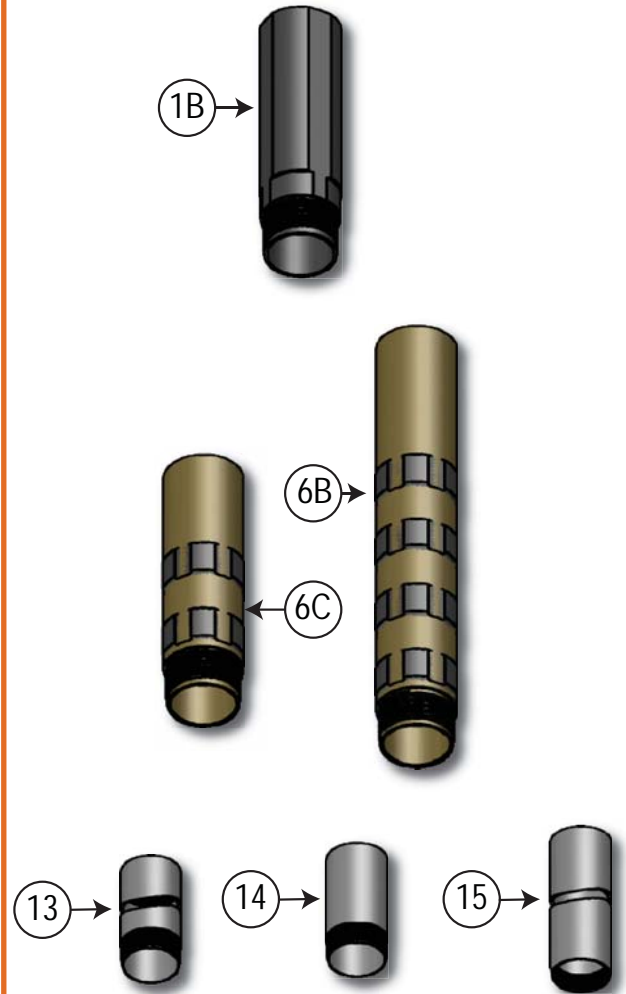


Drilling & Exploration - Core Barrels

Core Barrel



Core Barrel Accessories



Drilling & Exploration - Core Barrels

Core Barrel



Item	Description	Part Numbers for Each Size				
		B W/L	N W/L	N2 W/L	H W/L	
	Assembly	90-02-310-TL	90-02-410-TL	90-27-410-TL	90-02-510-TL	
1	Locking Coupling Tanged	90-21-334C	90-21-434	90-21-434	90-21-534	
2	Adapter Coupling	90-21-335	90-21-435	90-21-435	90-21-535	
	Adapter Coupling F/H	90-21-335H	90-21-435H		90-21-535H	
3	Landing Ring	90-21-336	90-21-436	90-27-436	90-21-536	
4	Outer Tube	3m	90-21-350	90-21-450	90-21-450	90-21-550
		1.5m	90-21-345	90-21-445	90-21-445	90-21-545
5	Inner Tube Stabilizer	90-21-339	90-21-439	90-27-439	90-21-539	
6	Standard Shell	**	**	**	**	
7	Bit	**	**	**	**	
8	Head Assembly	90-20-302-TL	90-20-402-TL	90-27-402-TL	90-21-502-TL	
9	Inner Tube	3m	90-21-330	90-21-430	90-27-430	90-21-530
		1.5m	90-21-325	90-21-425	90-27-425	90-21-525
10	Stop Ring	90-21-332	90-21-432	90-27-432	90-21-532	
11	Core Lifter	Slotted	90-21-333	90-21-433	90-27-433	90-21-533
		Broached	90-21-333B	90-21-433B	90-27-433B	90-21-533B
		Diamond Coated	90-21-333BDC	90-21-433BDC	90-27-433BDC	90-21-533BDC
		Basket	90-21-333BKT	90-21-433BKT	90-27-433BKT	90-21-533BKT
		Smooth	90-21-333S	90-21-433S	90-27-433S	90-21-533S
12	Core Lifter Case	90-21-331	90-21-431	90-27-431	90-21-531	

Accessories

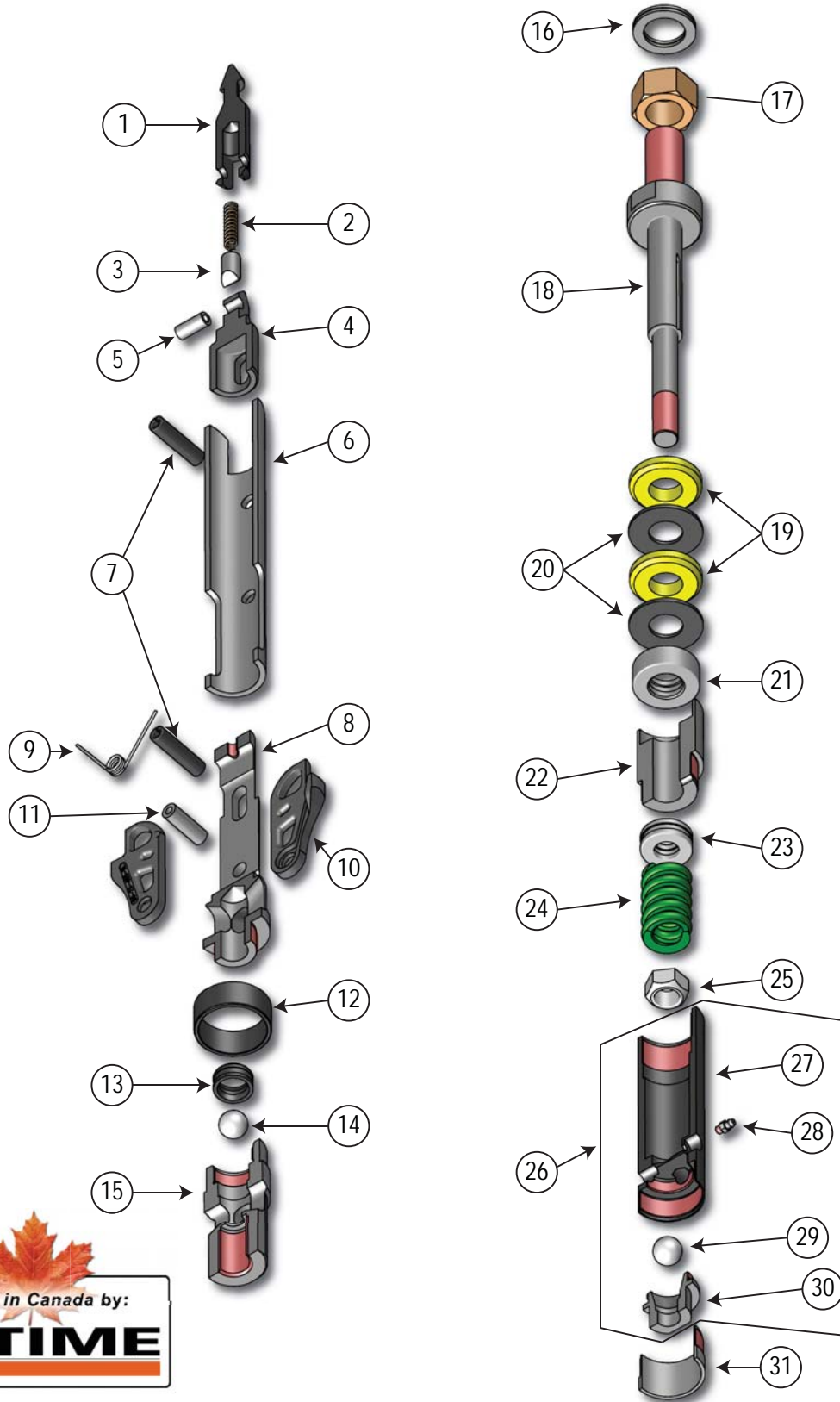
1B	Locking Coupling Tanged	F/H	90-21-334H	90-21-434H	90-21-434H	90-21-534H
		Carbide		90-21-434C		90-21-534C
6B	Double Length Shell		**	**	**	**
6C	Long Shell		**	**	**	**
13	Extension, Inner Tube, Double Length Shell		90-21-393	90-21-493	90-21-493	90-21-593
14	Extension, Inner Tube, Long Shell		90-21-392	90-21-492	90-21-492	90-21-592
15	Coupling - Inner Tube		90-21-391	90-21-491	90-21-491	90-21-591

** Multiple choices, please see accessories section below.



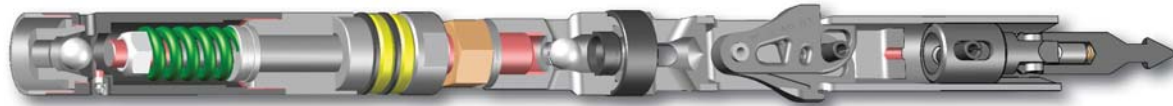
Drilling & Exploration - Core Barrels

Core Barrel - TIME Latch Head Assembly



Drilling & Exploration - Core Barrels

Core Barrel - TIME Latch Head Assembly



Item	Description	Part Numbers for Each Size			
		B	N	N2	H
	Assembly	90-20-302-TL	90-20-402-TL	90-27-402-TL	90-21-502-TL
1	Spearhead Point	90-22-301	90-22-301	90-22-301	90-22-301
2	Spring, Compression	90-22-302	90-22-302	90-22-302	90-22-302
3	Detent Plunger	90-22-303	90-22-303	90-22-303	90-22-303
4	Base, Spearhead	90-22-304	90-22-404	90-22-404	90-22-504
5	Pin, Spirol	90-22-305	90-22-305	90-22-305	90-22-305
6	Latch Retracting Case	90-22-306-TL	90-22-406-TL	90-22-406-TL	90-22-506-TL
7	Pin, Spring	90-21-303	90-21-403	90-21-403	90-21-503
8	Latch Body, Upper	90-21-309-1-TL	90-21-409-1-TL	90-21-409-1-TL	90-21-509-1-TL
9	Latch Spring	90-21-304-TL	90-21-404-TL	90-21-404-TL	90-21-404-TL
10	Latch	90-21-305-TL	90-21-405-TL	90-21-405-TL	90-21-505-TL
11	Pin, Spirol, Latch Pivot	90-21-306-TL	90-21-406-TL	90-21-406-TL	90-21-506-TL
12	Landing Shoulder	90-21-309-2	90-21-409-2	90-27-409	90-21-509-2
13	Bushing, Landing Indicator	90-29-380	90-29-380	90-29-380	90-29-380
14	Ball, Landing Indicator	90-21-421	90-21-421	90-21-421	90-21-421
15	Latch Body, Lower	90-21-309-3-TL	90-21-409-3-TL	90-21-409-3-TL	90-21-509-3-TL
16	Lockwasher	90-21-310-LW	90-21-410-LW	90-21-410-LW	90-21-510-LW
17	Jam Nut	90-21-310	90-21-410	90-21-410	90-21-510
18	Spindle	90-21-311	90-21-411	90-21-411	90-21-511
19	Shut Off Valve	90-21-312-U	90-21-412-U	90-21-412-U	90-21-512-U
20	Washer	90-21-313	90-21-413	90-21-413	90-21-513
21	Bearing, Spindle, Upper	90-21-314	90-21-414	90-21-414	90-21-514
22	Bushing, Spindle	90-21-315	90-21-415	90-21-415	90-21-515
23	Bearing, Spindle, Lower	90-21-324	90-21-424	90-21-424	90-21-524
24	Spring, Compression	90-21-316	90-21-416	90-21-416	90-21-516
25	Lock Nut	90-21-317	90-21-417	90-21-417	90-21-517
26	Assembly, Inner Tube Cap (includes 27-30)	90-21-319	90-21-419	90-27-419	90-21-519
27	Cap, Inner Tube Body	90-21-320	90-21-420	90-27-420	90-21-520
28	Grease Fitting	90-29-020	90-29-020	90-29-020	90-29-020
29	Ball	90-21-321	90-21-421	90-21-421	90-21-521
30	Check Valve Body	90-21-323	90-21-423	90-21-423	90-21-523
31	Protector, Inner Tube Cap	90-21-360	90-21-460	90-21-460	90-21-560

North America 1-800-669-3542
International +1-705-647-8138

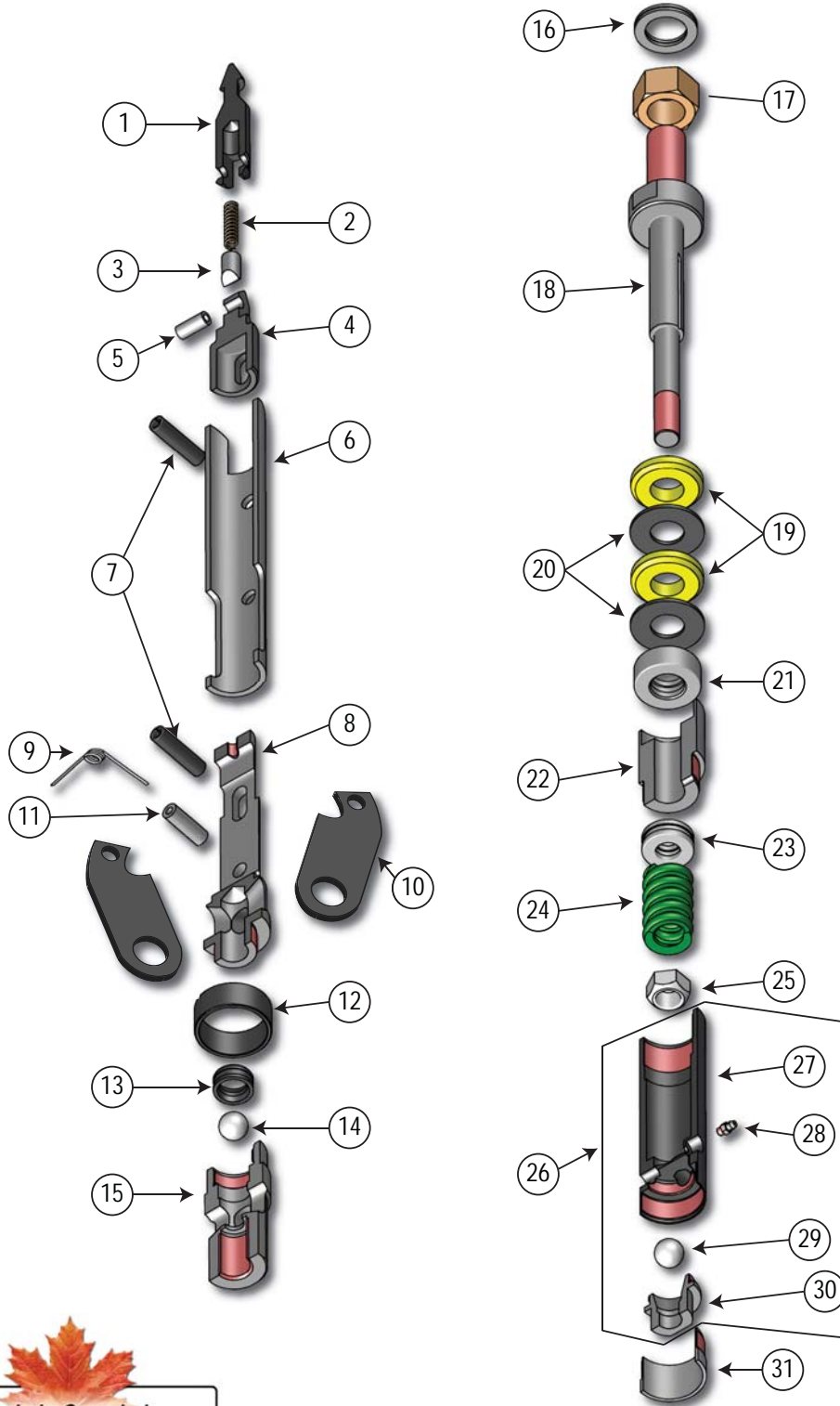
PAGE: DE5



www.timeltd.ca

Drilling & Exploration - Core Barrels

Core Barrel - Spring Latch Head Assembly



North America 1-800-669-3542
International +1-705-647-8138

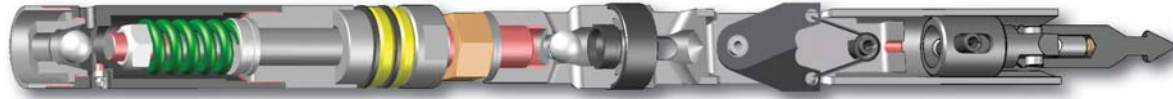
PAGE: DE6



www.time ltd.ca

Drilling & Exploration - Core Barrels

Core Barrel - Spring Latch Head Assembly



Item	Description	Part Numbers for Each Size			
		B	N	N2	H
	Assembly	90-20-302	90-20-402	90-27-402	90-21-502
1	Spearhead Point	90-22-301	90-22-301	90-22-301	90-22-301
2	Spring, Compression	90-22-302	90-22-302	90-22-302	90-22-302
3	Detent Plunger	90-22-303	90-22-303	90-22-303	90-22-303
4	Base, Spearhead	90-22-304	90-22-404	90-22-404	90-22-504
5	Pin, Spirol	90-22-305	90-22-305	90-22-305	90-22-305
6	Latch Retracting Case	90-22-306-SL	90-22-406-SL	90-22-406-SL	90-22-506-SL
7	Pin, Spring	90-21-303	90-21-403	90-21-403	90-21-503
8	Latch Body, Upper	90-29-309-1	90-29-409-1	90-29-409-1	90-29-509-1
9	Latch Spring	90-21-304	90-21-404	90-21-404	90-21-404
10	Latch	90-21-305	90-21-405	90-21-405	90-21-505
11	Pin, Spirol, Latch Pivot	90-21-306	90-21-406	90-21-406	90-21-506
12	Landing Shoulder	90-29-309-2	90-29-409-2	90-27-409	90-29-509-2
13	Bushing, Landing Indicator	90-29-380	90-29-380	90-29-380	90-29-380
14	Ball, Landing Indicator	90-21-421	90-21-421	90-21-421	90-21-421
15	Latch Body, Lower	90-29-309-3	90-29-409-3	90-29-409-3	90-29-509-3
16	Lockwasher	90-21-310-LW	90-21-410-LW	90-21-410-LW	90-21-510-LW
17	Jam Nut	90-21-310	90-21-410	90-21-410	90-21-510
18	Spindle	90-21-311	90-21-411	90-21-411	90-21-511
19	Shut Off Valve	90-21-312-U	90-21-412-U	90-21-412-U	90-21-512-U
20	Washer	90-21-313	90-21-413	90-21-413	90-21-513
21	Bearing, Spindle, Upper	90-21-314	90-21-414	90-21-414	90-21-514
22	Bushing, Spindle	90-21-315	90-21-415	90-21-415	90-21-515
23	Bearing, Spindle, Lower	90-21-324	90-21-424	90-21-424	90-21-524
24	Spring, Compression	90-21-316	90-21-416	90-21-416	90-21-516
25	Lock Nut	90-21-317	90-21-417	90-21-417	90-21-517
26	Assembly, Inner Tube Cap (includes 27-30)	90-21-319	90-21-419	90-27-419	90-21-519
27	Cap, Inner Tube Body	90-21-320	90-21-420	90-27-420	90-21-520
28	Grease Fitting	90-29-020	90-29-020	90-29-020	90-29-020
29	Ball	90-21-321	90-21-421	90-21-421	90-21-521
30	Check Valve Body	90-21-323	90-21-423	90-21-423	90-21-523
31	Protector, Inner Tube Cap	90-21-360	90-21-460	90-21-460	90-21-560

North America 1-800-669-3542
International +1-705-647-8138

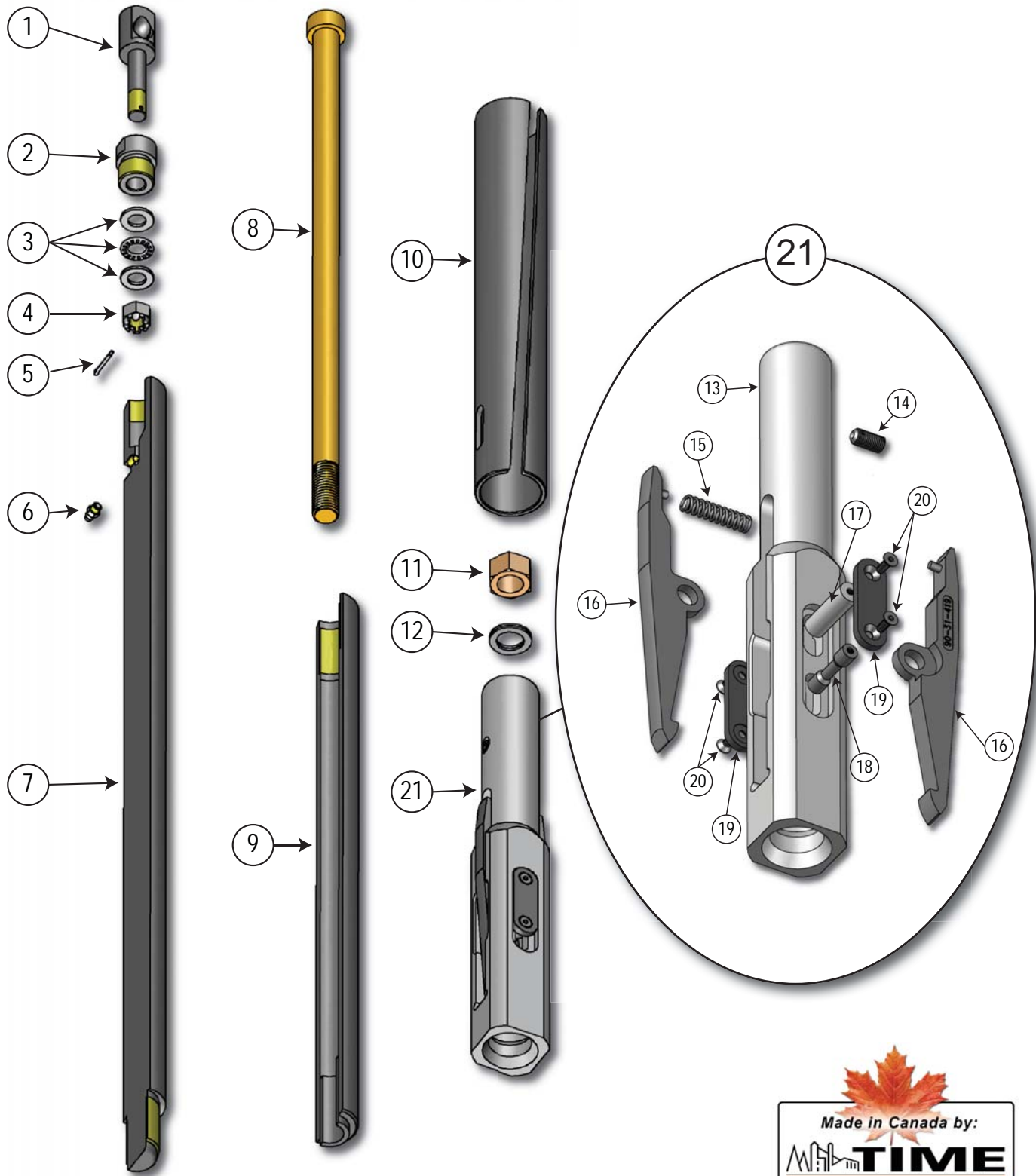
PAGE: DE7



www.timeltd.ca

Drilling & Exploration - Core Barrels

Overshot



Drilling & Exploration - Core Barrels

Overshot



Item	Description	Part Numbers for Each Size			
		B	N	H	P
	Overshot Assembly	90-32-300-TL	90-32-400-TL	90-32-500-TL	90-32-600-TL
1	Cable Swivel Eye Bolt	90-31-201	90-31-201	90-31-201	90-31-201
2	Cable Swivel Collar	90-31-202	90-31-202	90-31-202	90-31-202
3	Thrust Bearing	90-31-204	90-31-204	90-31-204	90-31-204
4	Castle Nut	90-31-205	90-31-205	90-31-205	90-31-205
5	Cotter Pin	90-31-206	90-31-206	90-31-206	90-31-206
6	Grease Fitting	90-29-020	90-29-020	90-29-020	90-29-020
7	Cable Swivel Body	90-32-407	90-32-407	90-32-407	90-32-407
8	Jar Staff	90-32-412	90-32-412	90-32-412	90-32-412
9	Jar Tube	90-32-421	90-32-421	90-32-421	90-32-421
10	Locking Sleeve	90-31-411	90-31-411	90-31-411	90-31-411
11	Hex Nut	90-31-408	90-31-408	90-31-408	90-31-408
12	Lock Washer	90-31-408-LW	90-31-408-LW	90-31-408-LW	90-31-408-LW
13	Overshot Head Body	90-32-315-TL	90-32-415-TL	90-32-515-TL	90-32-615-TL
14	Set Screw	90-31-314	90-31-314	90-31-314	90-31-314
15	Compression Spring	90-31-316	90-31-316	90-31-316	90-31-316
16	Lifting Dog	90-31-419	90-31-419	90-31-419	90-31-419
17	Pivot Pin	90-32-417-TL	90-32-417-TL	90-32-417-TL	90-32-417-TL
18	Sway Pin	90-32-418-TL	90-32-418-TL	90-32-418-TL	90-32-418-TL
19	Pin Link	90-32-499	90-32-499	90-32-499	90-32-499
20	Cap Screw	90-32-498	90-32-498	90-32-498	90-32-498
21	Overshot Head Assembly	90-32-397	90-32-497	90-32-597	90-32-697



North America 1-800-669-3542
International +1-705-647-8138

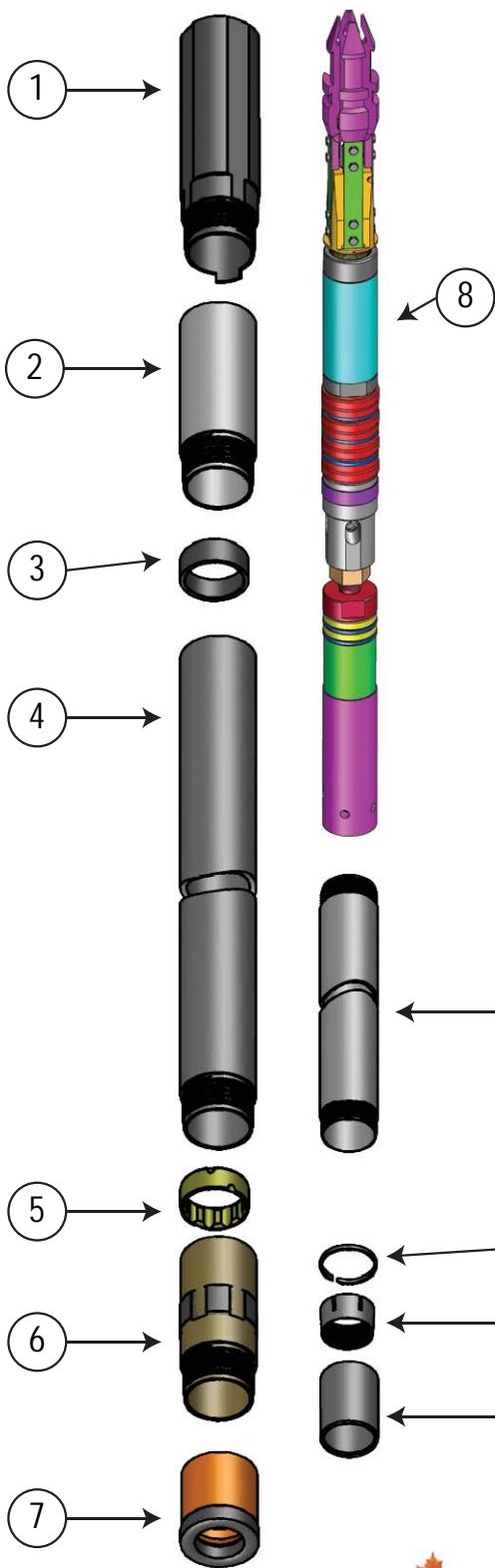
PAGE: DE9



www.timeltd.ca

Drilling & Exploration - Q/L Core Barrels

Quad Latch Core Barrel



Quad-Latch Head Assembly features and benefits:

1. Greater latching strength
2. Ideal for drilling in sand and dry conditions
3. Ideal for drilling in back pressure
4. More latching surface to reduce the chance of miss-latches

8 The Quad-Latch head assembly features four (4) fingers used to lock the inner barrel into drilling position. The four finger latching system of the Quad-Latch head assembly provides positive latching with 60% more latching surfaces than other latching systems in the market. This larger latch area and rugged construction allow the assembly to withstand greater force from back-pressure in the hole and impact blows.

The Quad-Latch head assembly is designed with fewer moving parts than other wireline systems, making it ideal for drilling in sandy, abrasive formations and dry conditions. This design features a large open area that is less likely to "sand up around the overshot latching area", while at the same time allowing for greater flow of drill fluid during drilling operations.

The overshot tool functions without "external triggering hardware". The overshot features a step type mechanism to retrieve the inner barrel from the drilling position. The four Quad-Latch fingers cannot be released until the overshot tool compresses them for inner barrel recover, thus, ultimately reducing the chances of a miss-latch.

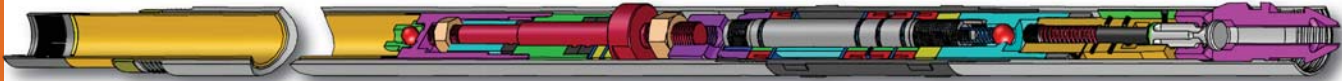
Usage guidelines:

1. Quad Latch must be loaded with a loading sleeve to avoid damaging the lips seals.
2. Close fingers when loading Quad Latch head assembly in the hole. This stops the piston from pushing downward, which prohibits the water flow through the head assembly. Thus forcing the water to flow on to the lip seals.
3. When Quad-latch is latched in the locking coupling the fingers open allowing the water pressure to push the piston downward. This opens up the water ways allowing water to flow through the inside of the head assembly down to the bit.
4. When you turn the water off the piston springs back allowing the fingers to squeeze together and receive the overshot
5. The quad latch is also features a an shaft and locking nut adapter which allows for greater adjustment over conventional head assemblies to the length of your head and inner tube assembly. This ensures your inner tube is positioned tightly to the bit and you have the best opportunity for full core recovery.



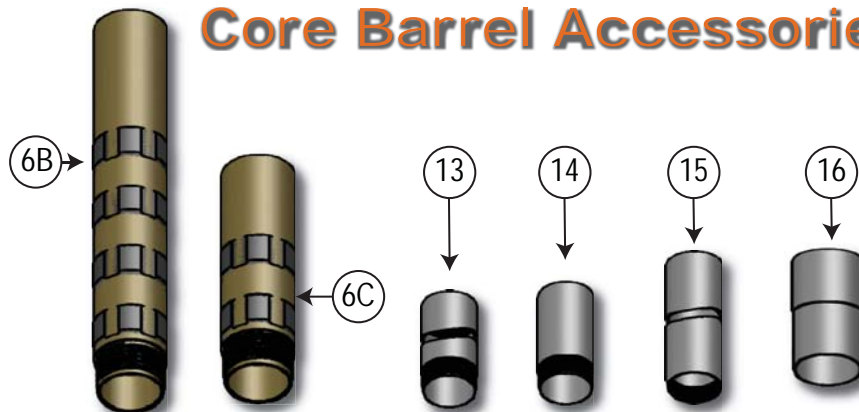
Drilling & Exploration - Q/L Core Barrels

Quad Latch Core Barrel



Item	Description	Part Numbers for Each Size			
		B	N	H	
	Assembly	92-45-300	92-45-400	92-45-500	
1	Locking Coupling	92-45-335	92-45-435	92-45-535	
2	Adapter Coupling	N/A	N/A	92-44-516	
3	Landing Ring	90-21-336	90-21-436	90-21-536	
4	Outer Tube	3m	90-21-350	90-21-450	90-21-550
		1.5m	90-21-345	90-21-445	90-21-545
5	Inner Tube Stabilizer	90-21-339	90-21-439	90-21-539	
6	Standard Shell	**	**	**	
7	Bit	**	**	**	
8	Head Assembly	92-45-302	92-45-402	92-45-502	
9	Inner Tube	3m	90-21-330	90-21-430	90-21-530
		1.5m	90-21-325	90-21-425	90-21-525
10	Stop Ring	90-21-332	90-21-432	90-21-532	
11	Core Lifter	Slotted	90-21-333	90-21-433	90-21-533
		Broached	90-21-333B	90-21-433B	90-21-533B
12	Core Lifter Case	90-21-331	90-21-431	90-21-531	
Accessories					
6B	Double Length Shell	**	**	**	
6C	Long Shell	**	**	**	
13	Extension, Inner Tube, Double Length Shell	90-21-393	90-21-493	90-21-593	
14	Extension, Inner Tube, Long Shell	90-21-392	90-21-492	90-21-592	
15	Coupling - Inner Tube	90-21-391	90-21-491	90-21-591	
16	Loading Sleeve	90-32-395	90-32-495	90-32-595	

Core Barrel Accessories



North America 1-800-669-3542
International +1-705-647-8138

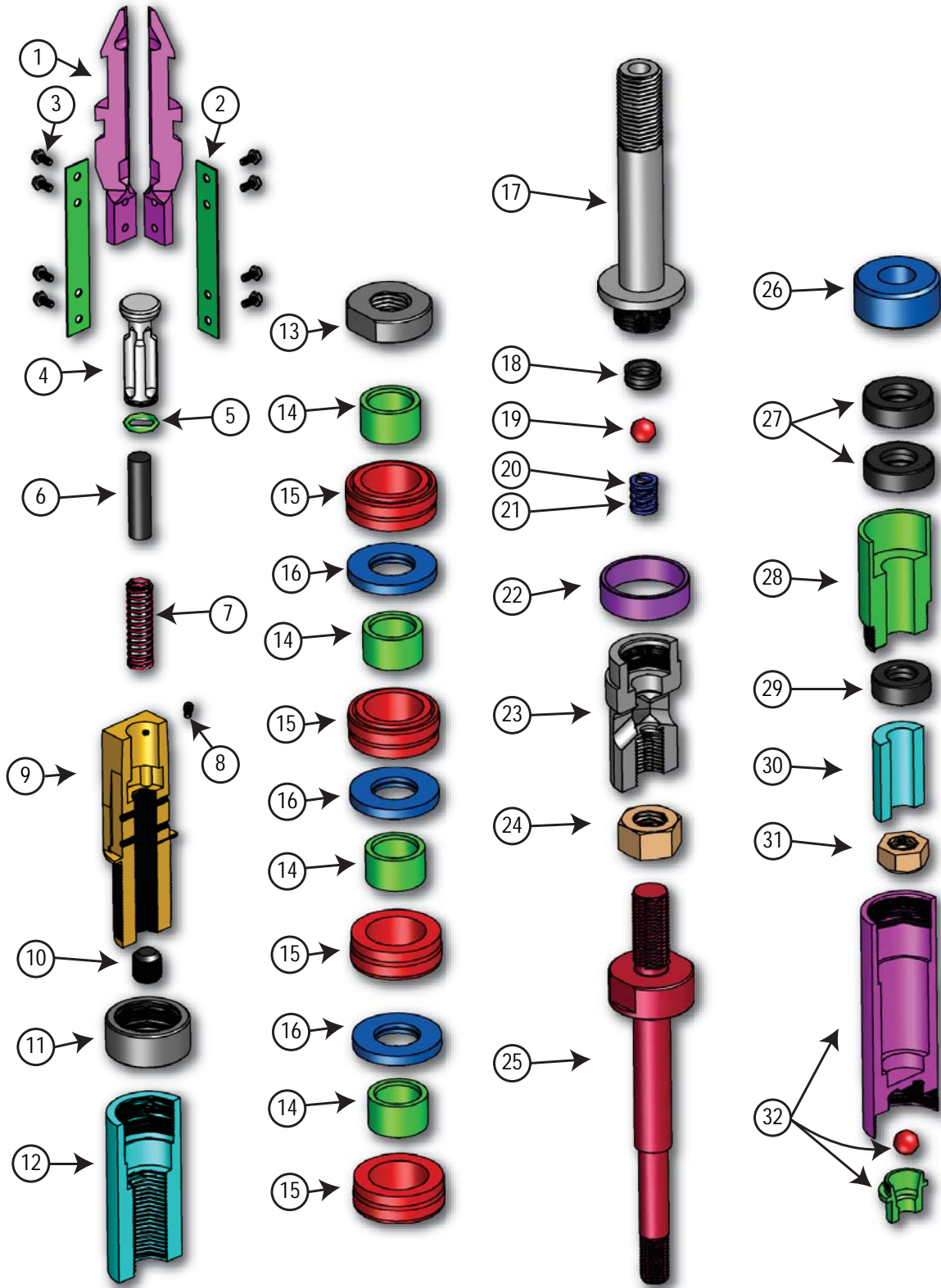
PAGE: DE11



www.timeltd.ca

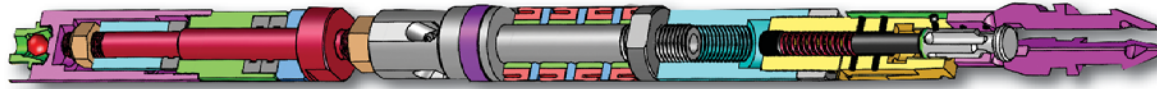
Drilling & Exploration - Q/L Head Assy

Quad Latch Head Assembly



Drilling & Exploration - Q/L Head Assy

Quad Latch Head Assembly



Item	Description	Part Numbers for Each Size		
		B	N	H
	Head Assembly	92-45-302	92-45-402	92-45-502
1	Quad Latch Finger	92-44-301	92-44-401	92-44-501
2	Leaf Spring	92-44-305	92-44-405	92-44-505
3	Cap Screw	92-44-326	92-44-526	92-44-526
4	Piston	92-44-302	92-44-402	92-44-502
5	O-Ring	568-015-90	568-117-90	568-119-90
6	Push Rod	92-44-306	92-44-406	92-44-506
7	Compression Spring	92-44-318	92-44-418	92-44-518
8	Stop Screw	92-44-504	92-44-404	92-44-504
9	Head Base	92-44-303	92-45-403	92-44-503
10	Set Screw	92-44-327	92-44-427	92-44-527
11	Lock Nut, Adapter	92-44-307	92-45-407	92-44-507
12	Adapter, Base Shaft	92-45-308	92-45-408	92-45-508
13	Lock Nut, Shaft	92-45-309	92-45-409	92-45-509
14	Spacer, Pump-In Seal	n/a	92-45-410	92-44-510
15	Seal, Pump-In	92-44-353	92-44-453	92-44-553
16	Washer, Thrust	92-45-311	92-45-411	92-45-511
17	Shaft, Pump-In	92-45-313	92-45-413	92-45-513
18	Bushing, Water Retention	90-29-381	90-29-381	90-29-381
19	Ball, Water Retention	90-21-421	90-21-421	90-21-421
20	Spring, Water Retention, Green, Light	90-29-382	90-29-382	90-29-382
21	Spring, Water Retention, Blue, Medium	90-29-383	90-29-383	90-29-383
22	Landing Shoulder	90-21-309-2	90-21-409-2	90-21-509-2
23	Latch Body, Lower	90-21-309-3	90-21-409-3	90-21-509-3
24	Jam Nut	90-21-310	90-21-410	90-21-510
25	Spindle	90-21-311	90-21-411	90-21-511
26	Spacer, Valve Replacement	92-45-314	92-45-414	92-45-514
27	Bearing, Spindle, Upper	90-21-314	90-21-414	90-21-514
28	Bushing, Spindle	90-21-315	90-21-415	90-21-515
29	Bearing, Hanger	90-21-314	90-21-424	90-21-414
30	Spacer, Spring Replacement	92-45-318	92-45-418	92-45-518
31	Lock Nut	90-21-317	90-21-417	90-21-517
32	Assembly, Inner Tube Cap	90-21-319	90-21-419	90-21-519

North America 1-800-669-3542
International +1-705-647-8138

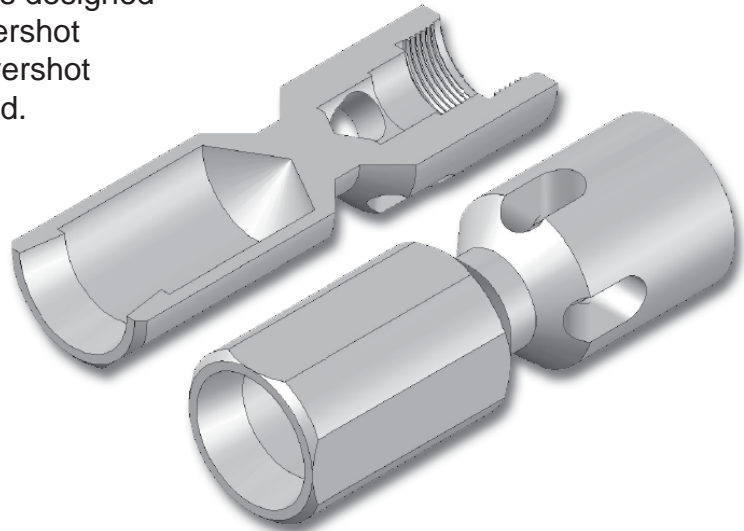


Drilling & Exploration

Quad Latch (Q/L) Overshot Head

The Quad Latch (Q/L) Overshot Head is designed to be compatible with other existing overshot designs. Simply remove the existing overshot head, and install the Q/L Overshot Head.

No additional parts required



Description	Part Number
Quad Latch Overshot B	92-46-301
Quad Latch Overshot N	92-46-401
Quad Latch Overshot H	92-46-501

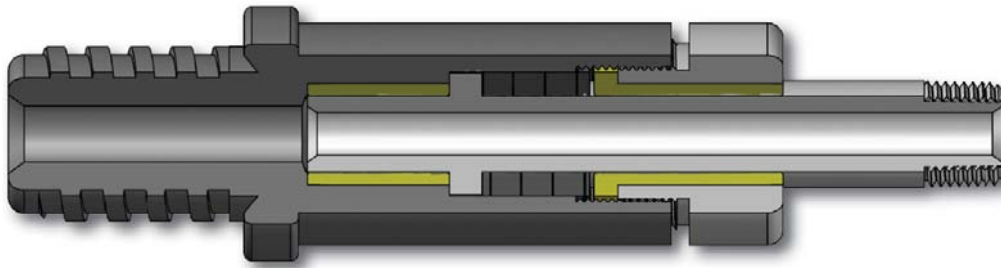
Hoisting Plugs

Description	Part Number
Hoisting Plug Assembly AW R/B Assembly Max. 6,000lbs	93-00-200
Hoisting Plug Assembly NW R/B Assembly Max. 13,000lbs	93-00-400
Hoisting Plug Assembly NW R/B Assembly Max. 30,000lbs	93-00-450



Drilling & Exploration - Water Swivel

Conventional Water Swivel



Full Assembly Conventional Water Swivel

Size	Part Number
EW	439-02
AW	439-04
AW/L	440-19
BW/L	440-20
NW/L	440-18
HW/L	440-22

Parts

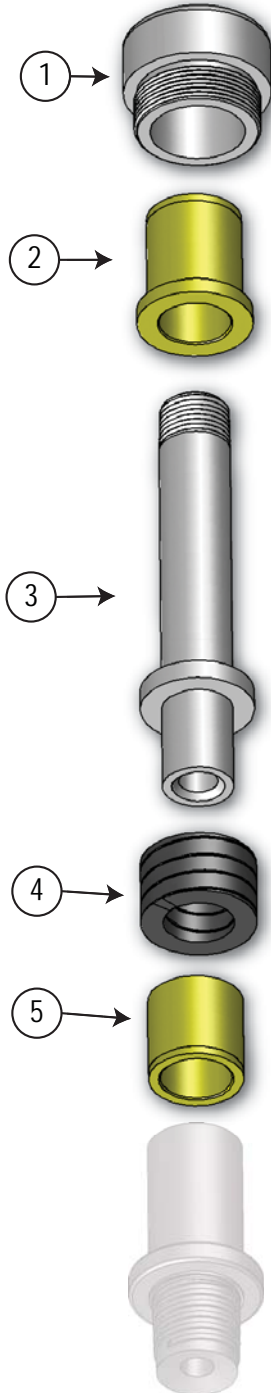
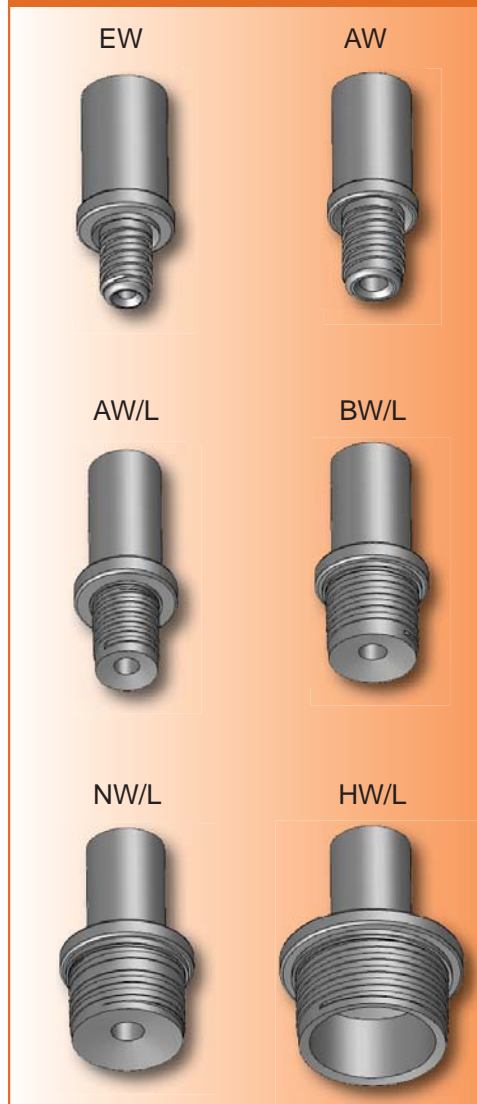
Item	Description	Part Number
1	Nut, Packing	440-13
2	Bushing, Upper	440-12
3	Spindle	440-10
4	Packing	440-21
5	Bushing, Lower	440-11

440-26 Repair kit

Qty	Description
1	Nut, Packing
1	Bushing, Upper
1ft	Packing
1	Bushing, Lower



Available in these rod threads

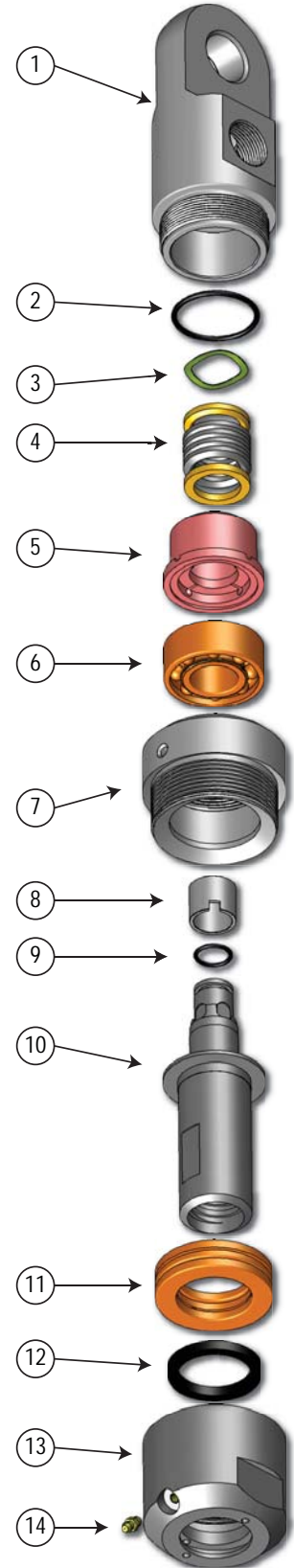
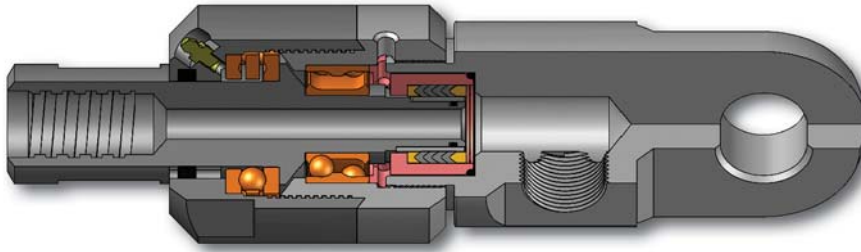


North America 1-800-669-3542
International +1-705-647-8138



Drilling & Exploration - Water Swivel

Compact Plus Water Swivel



Item	Description	Part Number
Full Assembly Compact Plus Water Swivel		
	• AW Rod Box	92-13-100
	• Rotating Capacity: 10,000 lbs/4,540 kg	
	• Static Capacity: 20,000 lbs/9,000 kg	
Repair Kit (see below)		92-13-150
1	Cap, Swivel	92-12-101
2	O-Ring	568-225-90
3	Spring, Wave Washer	92-12-111
4	Assembly, Packing (See Below)	92-12-150
5	Housing, Packing	92-12-104
6	Bearing, Angular Contact	92-12-114
7	Body, Upper	92-13-103
8	Sleeve, Wear	92-13-105
9	O-Ring	568-116-90
10	Spindle	92-13-106
11	Bearing, Thrust	92-13-115
12	Gasket, Felt	92-12-113
13	Body, Lower	92-13-110
14	Grease Fitting	90-29-020

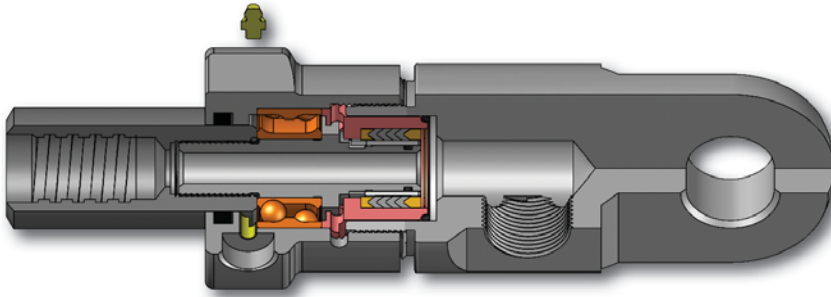
** 92-13-150 Repair Kit Includes **

Qty	Description
3 Sets	O-Rings
2	Spring, Wave Washers
2	Assembly, Packing
2	Sleeve, Wear
1	Bearing, Angular Contact
2	Gasket, Felt
1	Bearing, Thrust

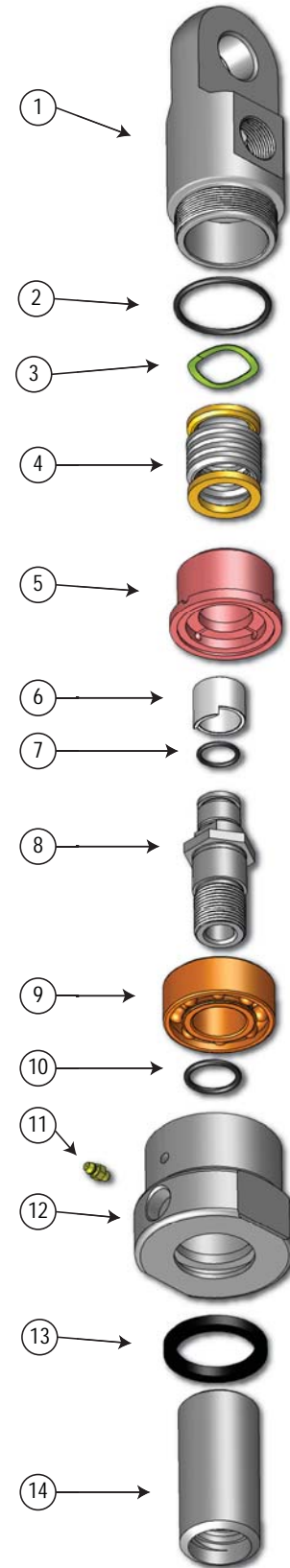


Drilling & Exploration - Water Swivel

Compact Water Swivel



Item	Description	Part Number
Full Assembly Compact Water Swivel		
	• AW Rod Box	92-12-100
	• Rotating Capacity: 500 lbs/227 kg	
	• Static Capacity: 5,000 lbs/2,270 kg	
Repair Kit (see below)		92-11-200
1	Cap, Swivel	92-12-101
2	O-Ring	568-225-90
3	Spring, Wave Washer	92-12-111
4	Assembly, Packing (see below)	92-12-150
5	Housing, Packing	92-12-104
6	Sleeve, Wear	92-12-105
7	O-Ring	568-116-90
8	Spindle	92-12-106
9	Bearing, Angular Contact	92-12-114
10	O-Ring	568-120-90
11	Grease Fitting	90-29-020
12	Body, Lower	92-11-110
13	Gasket, Felt	92-12-113
14	Extension, AW Rod Box	92-12-123



** 92-11-200 Repair Kit Includes **

Qty	Description
3 Sets	O-Rings
2	Spring, Wave Washers
2	Assembly, Packing
2	Sleeve, Wear
1	Bearing, Angular Contact
2	Gasket, Felt

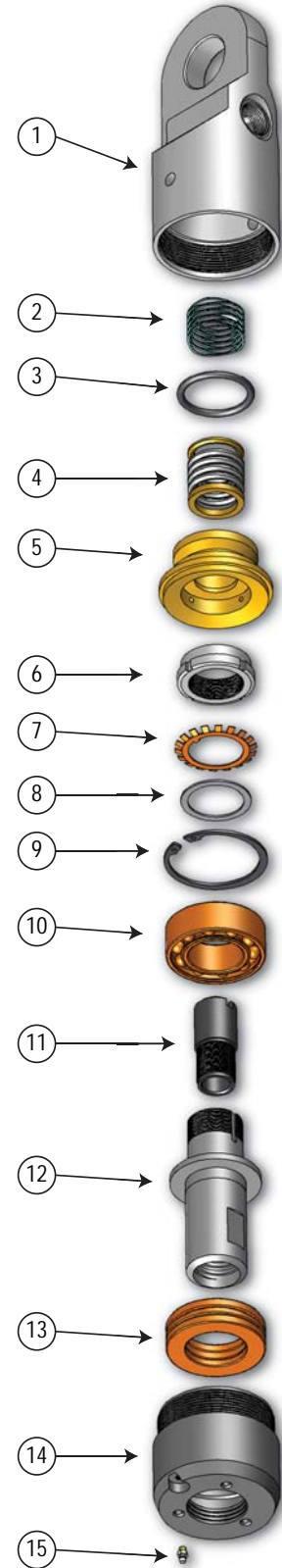
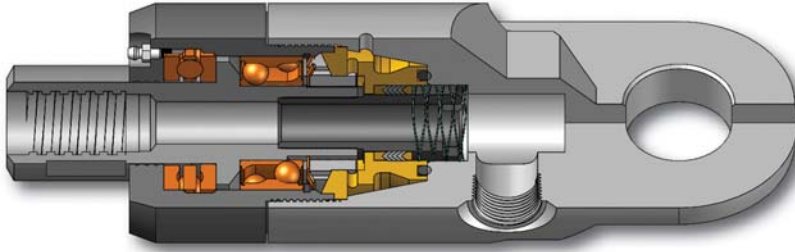


North America 1-800-669-3542
International +1-705-647-8138



Drilling & Exploration - Water Swivel

Universal Water Swivel



Item	Description	Part Number
Full Assembly Universal Water Swivel		
	<ul style="list-style-type: none"> BW Rod Box Rotating Capacity: 11,000 lbs/5,000 kg Static Capacity: 25,000 lbs/11,400 kg 	92-15-100
Repair Kit (see below)		92-15-150
1	Cap, Swivel	92-15-101
2	Spring, Compression	92-15-112
3	O-Ring	568-407-90
4	Assembly, Packing	92-15-150
5	Housing, Packing	92-15-104
6	Nut, Spindle	92-15-108
7	Lockwasher	92-15-116
8	Spacer	92-15-109
9	Retaining Ring	92-15-117
10	Bearing, Angular Contact	92-15-114
11	Extension, Upper, Spindle	92-15-107
12	Spindle	92-15-106
13	Bearing, Thrust	92-15-115
14	Body, Lower	92-15-110
15	Grease Fitting	90-29-020

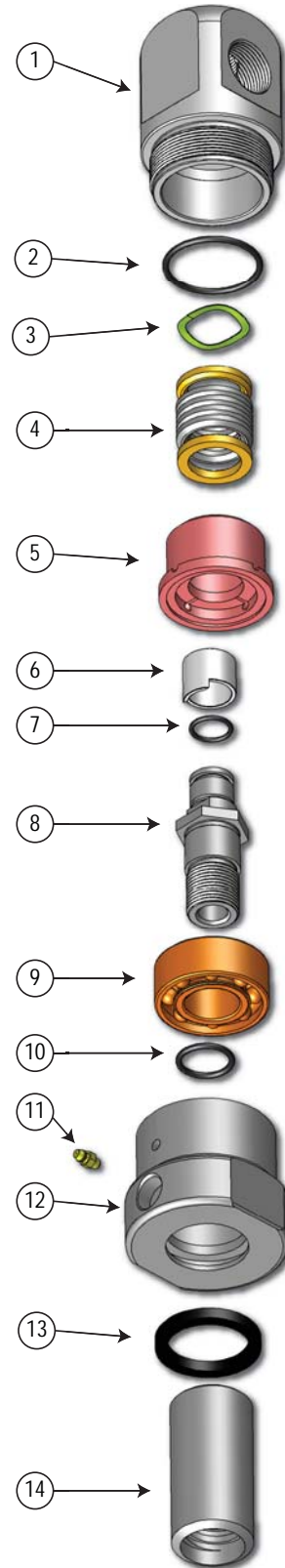
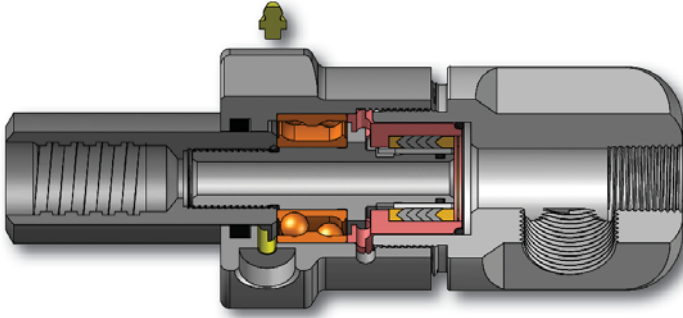
** 92-15-150 Repair Kit Includes **

Qty	Description
1	O-Ring
1	Assembly, Packing
1	Retaining Ring
1	Lockwasher
1	Extension, Upper, Spindle
1	Bearing, Angular Contact
1	Bearing, Thrust



Drilling & Exploration - Water Swivel

Underground Water Swivel



Item	Description	Part Number
Full Assembly Underground Water Swivel		
	• AW Rod Box	92-11-100
Repair Kit (see below)		92-11-200
1	Cap, Swivel	92-11-101
2	O-Ring	568-225-90
3	Spring, Wave Washer	92-12-111
4	Assembly, Packing (see below)	92-12-150
5	Housing, Packing	92-12-104
6	Sleeve, Wear	92-12-105
7	O-Ring	568-116-90
8	Spindle	92-12-106
9	Bearing, Angular Contact	92-12-114
10	O-Ring	568-120-90
11	Grease Fitting	90-29-020
12	Body, Lower	92-11-110
13	Gasket, Felt	92-12-113
14	Extension, AW Rod Box	92-12-123

** 92-11-200 Repair Kit Includes **

Qty	Description
3 Sets	O-Rings
2	Spring, Wave Washers
2	Assembly, Packing
2	Sleeve, Wear
1	Bearing, Angular Contact
2	Gasket, Felt



North America 1-800-669-3542
International +1-705-647-8138



Rod Wrench



ROD WRENCH

Developed by TIME to mechanize the process of lifting and moving drill rods from the hole.

Powered with hydraulics.

Jaws available for B, N, H drill rods.



Description	Part Numbers
Hydraulic Rod Wrench – jaws not included	RW-2008
Jaw set for B	RW900-01
Jaw set for N	RW900-02
Jaw set for H	RW900-03

Inner Tube Wrench

Description	Part Numbers
WRENCH, A INNER TUBE	92-21-260
WRENCH, B INNER TUBE	92-21-360
WRENCH, N INNER TUBE	92-21-460
WRENCH, N2 INNER TUBE	92-27-460
WRENCH, N INNER TUBE CARBIDE	92-21-460CBD
WRENCH, H I/T & N O/T	92-21-560
WRENCH, P INNER TUBE	92-21-660



Outer Tube Wrench

Description	Part Numbers
WRENCH, A OUTER TUBE	92-21-261
WRENCH, B OUTER TUBE	92-21-361
WRENCH, N O/T & H I/T	92-21-560
WRENCH, H OUTER TUBE	92-21-561
WRENCH, P OUTER TUBE	92-21-661

Heavy Duty Rod Wrench

WRENCH, B ROD OD 2.187"	92-31-300
WRENCH, N ROD OD 2.750"	92-31-400
WRENCH, H ROD OD 3.500"	92-31-500
WRENCH, P ROD OD 4.500"	92-31-600

When breakage of wireline has happened in the hole, The Wireline (W/L) cable Recovery tool is used to fish out the broken wireline cable.

Features:

- Cable fisher housing is connected to the inner tube, after removal of the core lifter case, and is lowered with the inner tube assembly and overshot.
- Reduces instances of having to pull the rods, and complications which occur when broken wireline cable has to be cut while pulling the rods.
- Reduces amount of scrap wireline cable through recovery.

Wireline Recovery Tool

Description	Part Numbers
CABLE FISHER BW/L	92-21-399
CABLE FISHER NW/L	92-21-499
CABLE FISHER HW/L	92-21-599
CABLE FISHER PW/L	92-21-699



Drilling & Exploration - Core Barrels Tools

Tools



Description	Part Numbers
Hand Swager 1/16" - 3/16" Cable Crimping Tool	BHSC-600
Oval Sleeve 3/16" - Copper	66-43

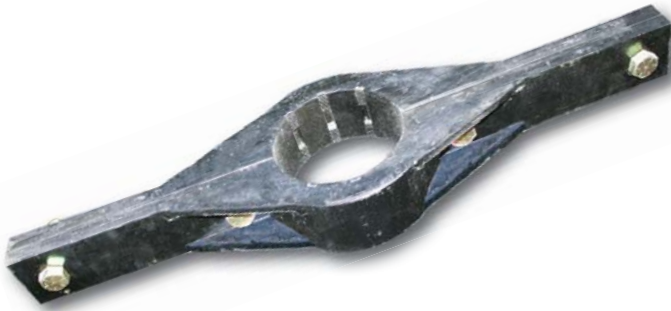


Description	Part Numbers
Ridgid 8" Pipe Wrench	31005
Ridgid Wrench 10 Hd	31010R
Ridgid 12" Pipe Wrench	31015
Ridgid 14" Pipe Wrench	31020
Ridgid 18" Pipe Wrench	31025
Ridgid 24" Pipe Wrench	31030
Ridgid 36" Pipe Wrench	31035
Ridgid 48" Pipe Wrench	31040
Ridgid 60" Pipe Wrench	31045
Ridgid 14" Aluminum Wrench	31095
Ridgid 18" Aluminum Wrench	31100
Ridgid 824 Aluminum Wrench	31105
Ridgid 836 Aluminum Wrench	31110
Ridgid 48" Aluminum Pipe Wrench	31115
Ridgid 18" Hook Jaws	31670
Ridgid 18" Heel Jaw W/Pin	31675
Ridgid 18" Flat Coil Spring	31680
Ridgid 18" Nut	31685
Ridgid 24" Hook Jaws	31695
Ridgid 24" Heel Jaw W/Pin	31700
Ridgid 24" Flat Coil Springs	31705
Ridgid 24" Nut	31710
Ridgid 24" Pin Only	31715
Ridgid 36" Hook Jaw	31720
Ridgid 36" Heel Jaw W/Pin	31725
Ridgid 36" Flat Coil Springs	31730
Ridgid 48" Hook Jaw	31745
Ridgid 48" Heel Jaw C/W Pin	31750
Ridgid 48" Wrench Nut	31760
Jaw, Hook 60" Wrench	31770
60" Ridgid Heel Jaw & Pin	31775



Drilling & Exploration - Core Barrels Tools

Casing Clamps



Casing Clamps

DESCRIPTION	PART #
AW Casing Clamps	108-54
BW Casing Clamps	108-61
NW Casing Clamps	108-60
HW Casing Clamps	108-58
PW Casing Clamps	108-59

Recovery Tools

TAPS *

DESCRIPTION	PART #
TAP, BW/L ROD BW/L R/B	92-31-350
TAP, NW/L ROD NW/L R/B	92-31-450
TAP, HW/L ROD HW/L R/B	92-31-550
TAP, HWT/HW CSG HWT CSG/B	92-31-650

*NO ADAPTERS NEEDED



FULL GRIP TAP **

DESCRIPTION	PART #
TAP, BW/L F/G AW R/B	92-31-351
TAP, NW/L F/G BW R/B	92-31-451
TAP, HW/L F/G NW R/B	92-31-551
TAP, HWT/HW CSG NW R/B	92-31-651

THIN WALL (KERF) FULL GRIP TAP **

TAP, ATW F/G EW R/B	92-31-252
TAP, BTW F/G AW R/B	92-31-352
TAP, NTW F/G BW R/B	92-31-452
TAP, HTW F/G NW R/B	92-31-552

**ADAPTERS NEEDED

SPEAR AND GRAPPLE

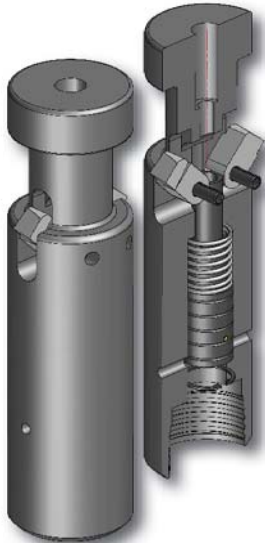
DESCRIPTION	PART #
SPEAR AND GRAPPLE BW/L AW R/P	92-31-399
GRAPPLE BW/L	92-31-398
SPEAR AND GRAPPLE NW/L BW R/P	92-31-499
GRAPPLE NW/L	92-31-498
SPEAR AND GRAPPLE HW/L NW R/P	92-31-599
GRAPPLE HW/L	92-31-598
SPEAR AND GRAPPLE PW/L NW R/P	92-31-699
GRAPPLE PW/L	92-31-698

**ADAPTERS NEEDED



Drilling & Exploration - Core Barrels Tools

Casing Cutters



Description	Part Numbers for Each Size		
	BW CSG	NW CSG	HW CSG
ASSEMBLY, CASING CUTTER	92-10-370	92-10-470	92-10-550
BODY	92-10-371	92-10-471	92-10-551
CUTTER	92-10-352	92-10-452	92-10-552
CUTTER, INSERT OPTION	92-10-353	92-10-453	92-10-553
PIN, CUTTER	92-10-354	92-10-454	92-10-554
SPRING	92-10-358	92-10-458	92-10-458
PISTON	92-10-359	92-10-459	92-10-459
PIN, BALL RETAINER	92-10-360	92-10-460	92-10-460
BALL	92-10-361	92-10-461	92-10-461
RETAINING RING	92-10-362	92-10-462	92-10-462
SETSCREW	92-10-463	92-10-463	N/A

Inner Tube Puller

This tool is designed with a one-direction bearing system, allowing for the support of inner tubes at the collar of the rods. The standard design will hold the inner tube in the puller to prevent it from dropping down the hole. The design with the spear point, provides the ability to attach the overshot to it, in tern allowing for the extended inner tube to be pulled out of the rods.

Description	Part Number
With Spear - BW/L	92-20-399
With Spear - NW/L	92-20-499
With Spear - HW/L	92-20-599
With Spear - PW/L	92-20-699
No Spear - BW/L	92-20-398
No Spear - NW/L	92-20-498
No Spear - HW/L	92-20-598
No Spear - PW/L	92-20-698



Inner Tube Pliers

This tool is designed to firmly grip and support the inner tube, allowing for the removal of extended inner tubes.



Product Number	Description
92-1006	Pliers Inner Tube



Drilling & Exploration

Outer Tube Clamp

Product Number	Size
92-21-370	B
92-21-470	N
92-21-570	H
92-21-670	P



Drill Anchor Bolts

Standard and Wedge Style Anchor Bolts

Anchor bolts are designed to secure the diamond drill to the rock face, eliminating side to side movement of the drill.

Benefits:

- No special tools required
- Reusable

Installation:

- For each anchor bolt a hole is drilled some degrees off from the intended drill hole.
- The anchor bolt is secured into the rock in this hole.
- The drill is then secured to the anchor bolt, ensuring a stable drill.

Standard Anchor Bolts		
Product Number	Length	Hole Size
83-05	36"	A
83-06	48"	A
83-07	66"	A
83-17	84"	A
83-09	96"	A
83-16	120"	A
83-30	36"	B
83-31	48"	B
83-32	66"	B
83-53	72"	N
83-54	96"	N

Wedge Style Anchor Bolts		
Product Number	Length	Hole Size
83-18	36"	A
83-36	42"	A
83-19	48"	A
83-33	60"	A
83-20	72"	A
83-37	96"	A
83-21	36"	B
83-38	42"	B
83-22	48"	B
83-34	60"	B
83-23	72"	B
83-39	96"	B
83-40	36"	N
83-41	48"	N
83-42	60"	N
83-43	72"	N
83-44	96"	N
83-45	36"	H
83-46	48"	H
83-47	60"	H
83-48	72"	H
83-49	96"	H



Various Plugs

GRAPHITE PLUGS

Graphite Plugs are used with drill rods.

INSTRUCTIONS

- Insert plug into drill bit before lowering rods to ensure no debris enters drill rods and rods travel smoothly to the bottom of the hole.
- Graphite plug is easily drilled out once the rods are at the bottom of the hole



Product Number	Size
GRAPHITE AWL	A
GRAPHITE ATK	ATK
GRAPHITE BWL	B
GRAPHITE BTK	BTK
GRAPHITE NWL	N
GRAPHITE NTK	NTK
GRAPHITE N-2	N2
GRAPHITE N-3	N3
GRAPHITE HWL	H
GRAPHITE PWL	P



DISPLACEMENT PLUG / WIPER PLUG

Displacement plugs are used in diamond drill rods and casings for cleaning the inside of the rods.

Features:

- made of soft natural rubber
- commonly used for cleaning the inside of drilling rod during cementing or grouting operations

Product Number	Size
413-00	A
413-01	B
413-02	H
413-03	N
413-04	P

Poly Rope / Twine



Product Number	Size
328-0120	ROPE POLY 1/4" X 1300'
328-0160	ROPE POLY 3/8" X 600'
328-0180	ROPE POLY 1/2" X 335'
328-0200	ROPE POLY 3/4" X 125'
47-1101	TWINE ORANGE 9000'
TWINE	TWINE BLUE 12000'

North America 1-800-669-3542
International +1-705-647-8138



Drilling & Exploration

Core Blocks



Product Number	Description
92-1500	CORE BLOCKS 2000/BAG

Casing Caps



Product Number	Description
108-06	BW CASING CAP
108-06-BOX	BW CASING CAP (BOX THREAD)
108-06-NT	BW CASING CAP (NO THREAD)
108-07	AW CASING CAP
108-08	NW CASING CAP
108-08-BOX	NW CASING CAP (BOX THREAD)
108-08-NT	NW CASING CAP (NO THREAD)
108-48	HW CASING CAP
108-49	PW CASING CAP
108-50	HWT CASING CAP
108-57	PWT CASING CAP



Drilling & Exploration

Burlap - Bags / Square



Part Number	Description
18X28	BURLAP - 18" X 28" 7oz BAG
28X40	BURLAP - 28" X 40" 10oz BAG
10X10	BURLAP - 10"X10" 10oz SQUARE

Rags



T-Shirt Rags

T-Shirt Rags are perfect for a variety of applications. The rags are cut from recycled, cotton t-shirts.

Part Number	Description
80001999	25 lbs bag T-SHIRT RAGS MIXED

Filament Tape



Product Number	Size
37918	TAPE FILAMENT 24MMx55M

North America 1-800-669-3542
International +1-705-647-8138

PAGE: DE27

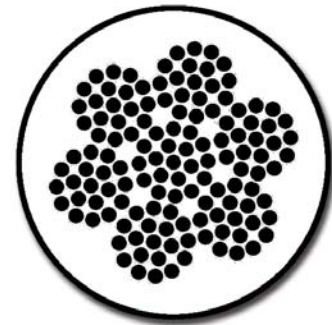
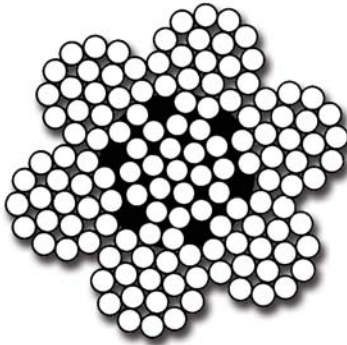
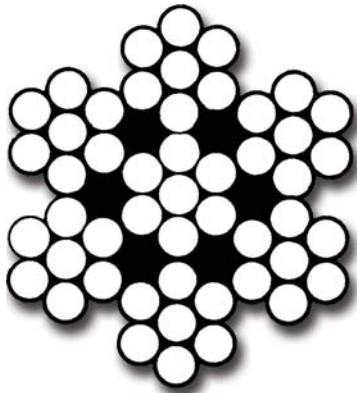


www.timeltd.ca

Drilling & Exploration - Wireline

7 x 7 & 7 x 19 Cable

Wire rope orders are customized to your requirements. Contact us directly for price and delivery.



A general all purpose cable available galvanized, in stainless steel and PVC coated.

7 x 7 & 7 x 19 Galvanized Cable				7 x 7 & 7 x 19 Stainless Steel				7 x 7 & 7 x 19 PVC Coated Cable				
Rope Diam. (In.)	Typical Wire Rope Construction	Break Strength (Lbs.)	Approx. Weight (Lbs./100')	Rope Diam. (In.)	Typical Wire Rope Construction	Break Strength (Lbs.)	Approx. Weight (Lbs./100')	Diameter		Typical Wire Rope Construction	Break Strength (Lbs.)	Approx. Weight (Lbs./100')
								Inside	Outside			
1/16	7 x 7	480	0.75	1/16	7 x 7	480	0.75	1/16	3/32	7 x 7	480	0.99
3/32	7 x 7	920	1.60	3/32	7 x 7	920	1.60	3/32	1/8	7 x 7	920	1.94
1/8	7 x 7	1700	2.85	1/8	7 x 7	1700	2.85	3/32	3/16	7 x 7	920	1.94
1/8	7 x 19	2000	2.90	5/32	7 x 19	2800	4.50	1/8	5/32	7 x 7	1700	3.28
5/32	7 x 19	2800	4.50	3/16	7 x 19	4200	6.50	1/8	3/16	7 x 19	3000	3.86
3/16	7 x 19	4200	6.50	1/4	7 x 19	7000	11.00	3/16	1/4	7 x 19	4200	9.58
1/4	7 x 19	7000	11.00	5/16	7 x 19	9800	17.30	1/4	5/16	7 x 19	7000	14.86
5/16	7 x 19	9800	17.30	3/8	7 x 19	14400	24.60	5/16	3/8	7 x 19	9800	19.42
3/8	7 x 19	14400	24.60					3/8	1/2	7 x 19	14400	29.70



North America 1-800-669-3542
International +1-705-647-8138

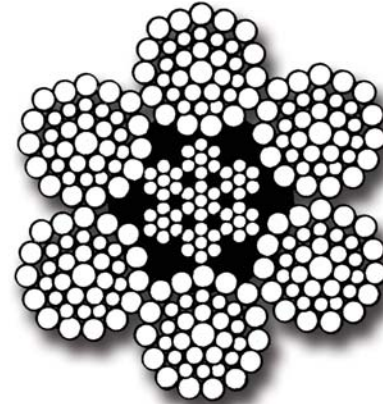
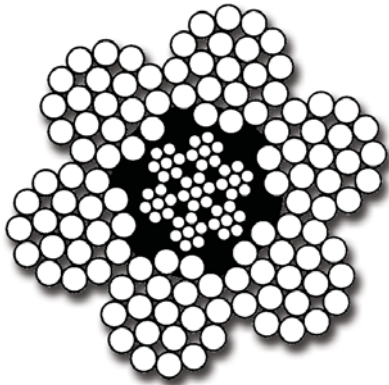
PAGE: DE28



www.timeltd.

6X19 & 6X36

Wire rope orders are customized to your requirements. Contact us directly for price and delivery.



6 x 19 Class Wire Rope

The 6 x 19 classification of wire rope is the most widely used. It has good flexibility and wear resistance. It can be suited to the specific needs of diverse kinds of machinery and equipment. Common applications include wire rope slings, boom pendants, winch lines, and hoist ropes.

Class 6 x 19 wire ropes are **not** rotation resistant; do **NOT** attach a swivel as the rope will unlay itself.

Larger diameters are available on request.

Fiber Core is available on request.

Specifications:

Strands: 6
Wires/Strand: 15 to 26
Core: IWRC
Standard Grade: EIPS

Lay: Regular
Compaction: N/A
Finish: Bright

6 x 19 IWRC EIPS Wire Rope			
Rope Diam. (In.)	Typical Construction	Break Strength (Lbs.)	Approx. Weight (Lbs./100')
3/8	6 x 19	7.55	0.26
7/16	6 x 19	10.20	0.35
1/2	6 x 25	13.30	0.46
9/16	6 x 25	16.80	0.59
5/8	6 x 25	20.60	0.72
3/4	6 x 25	29.40	1.04
7/8	6 x 25	39.80	1.42
1	6 x 25	51.70	1.85
1 1/8	6 x 25	65.00	2.34
1 1/4	6 x 25	79.90	2.89
1 3/8	6 x 25	96.00	3.50
1 1/2	6 x 25	114.00	4.16

6 x 36 Class Wire Rope

The 6 x 36 class of wire rope is characterized by the relatively large number of wires used in each strand. Ropes of the class are among the most flexible available due to the greater number of wires per strand. However their resistance to abrasion is less than ropes in the 6 x 19 class. Common applications include North American overhead cranes and large diameter wire rope slings.

Larger diameters are available on request.

Fiber Core is available on request.

Class 6 x 19 wire ropes are **not** rotation resistant; do **not** attach a swivel as the rope will unlay itself

Specifications:

Strands: 6
Wires/Strand: 27 to 49
Core: IWRC
Standard Grade: EIPS

Lay: Regular
Compaction: N/A
Finish: Bright

6 x 36 IWRC EIPS Wire Rope			Approx. Weight (Lbs./100')
Rope Diam. (In.)	Typical Construction	Break Strength(Lbs.)	
1/4	6 x 31	3.40	0.12
5/16	6 x 31	5.27	0.18
3/8	6 x 33	7.55	0.26
7/16	6 x 33	10.20	0.35
1/2	6 x 36	13.30	0.46
9/16	6 x 36	16.80	0.59
5/8	6 x 36	20.60	0.72
3/4	6 x 36	29.40	1.04
7/8	6 x 36	39.80	1.42
1	6 x 36	51.70	1.85
1-1/8	6 x 36	65.00	2.34
1-1/4	6 x 36	79.90	2.89
1-3/8	6 x 36	96.00	3.50
1-1/2	6 x 36	114.00	4.16

North America 1-800-669-3542
International +1-705-647-8138



Drilling & Exploration - Subs

Sub, Water Swivel & Hoisting Plug



Part Number	Description
-------------	-------------

93-51-200	SUB EW R/P TO BW/L R/P
93-51-201	SUB AW R/P TO BW/L R/P
93-51-202	SUB AW R/P TO NW/L R/P
93-51-203	SUB AW R/P TO HW/L R/P
93-51-204	SUB AW R/P TO HWT R/P
93-51-211	SUB AW R/P TO BT R/P
93-51-212	SUB AW R/P TO NT R/P
93-51-214	SUB AW R/P TO HT R/P
93-51-215	SUB AW R/P TO HM R/P
93-51-301	SUB BW R/P TO BW/L R/P
93-51-302	SUB BW R/P TO NW/L R/P
93-51-303	SUB BW R/P TO HW/L R/P
93-51-304	SUB BW R/P TO HWT R/P
93-51-310	SUB BW R/P TO BT R/P
93-51-311	SUB BW R/P TO NT R/P
93-51-312	SUB BW R/P TO NM R/P
93-51-313	SUB BW R/P TO HT R/P
93-51-401	SUB NW R/P TO NW/L R/P
93-51-402	SUB NW R/P TO HW/L R/P
93-51-411	SUB NW R/P TO NT R/P
93-51-413	SUB NW R/P TO HT R/P

Sub, Wedging and Fishing Tools



Part Number	Description
-------------	-------------

93-55-300	SUB BW/L R/B TO EW R/P
93-55-301	SUB BW/L R/B TO AW R/P
93-55-302	SUB BW/L R/B TO BW R/P
93-55-315	SUB BW/L R/B TO AX R/P
93-55-310	SUB BT R/B TO EW R/P
93-55-311	SUB BT R/B TO AW R/P
93-55-312	SUB BT R/B TO BW R/P
93-55-401	SUB NW/L R/B TO AW R/P
93-55-401LG	SUB NW/L R/B TO AW R/P LRG BOR
93-55-402	SUB NW/L R/B TO BW R/P
93-55-402LG	SUB NW/L R/B TO BW R/P LRG BOR
93-55-403	SUB NW/L R/B TO NW R/P
93-55-417	SUB NW/L R/B TO NX R/P
93-55-411	SUB NT R/B TO AW R/P
93-55-412	SUB NT R/B TO BW R/P
93-55-413	SUB NT R/B TO NW R/P
93-55-501	SUB HW/L R/B TO AW R/P
93-55-502	SUB HW/L R/B TO BW R/P
93-55-503	SUB HW/L R/B TO NW R/P
93-55-511	SUB HT R/B TO AW R/P
93-55-512	SUB HT R/B TO BW R/P
93-55-513	SUB HT R/B TO NW R/P
93-55-611	SUB HWT R/B TO AW R/P
93-55-612	SUB HWT R/B TO BW R/P
93-55-613	SUB HWT R/B TO NW R/P



Drilling & Exploration - Sub Parts

Sub, Casing



Part Number	Description
-------------	-------------

93-56-300	SUB BW/L R/B TO AW CSG/P
93-56-301	SUB BW/L R/B TO BW CSG/P
93-56-302	SUB BW/L R/B TO NW CSG/P
93-56-310	SUB BT R/B TO AW CSG/P
93-56-311	SUB BT R/B TO BW CSG/P
93-56-312	SUB BT R/B TO NW CSG/P
93-56-320	SUB BW CSG/B TO N BIT-THRD/P
93-56-321	SUB BW CSG/B TO NW/L R/P
93-56-322	SUB BW CSG/B TO NTW R/P
93-56-400	SUB NW/L R/B TO BW CSG/P
93-56-401	SUB NW/L R/B TO NW CSG/P
93-56-402	SUB NW/L R/B TO HWT CSG/P
93-56-410	SUB NT R/B TO BW CSG/P
93-56-411	SUB NT R/B TO NW CSG/P
93-56-412	SUB NT R/B TO HWT CSG/P
93-56-420	SUB NW CSG/B TO H BIT-THRD/P
93-56-421	SUB NW CSG/B TO HW/L R/P
93-56-422	SUB NW CSG/B TO HWT CSG/P
93-56-500	SUB HW/L R/B TO NW CSG/P
93-56-501	SUB HW/L R/B TO HWT CSG/P
93-56-502	SUB HW/L R/B TO PWT CSG/P
93-56-510	SUB HT R/B TO NW CSG/P
93-56-511	SUB HT R/B TO HWT CSG/P
93-56-512	SUB HT R/B TO PWT CSG/P
93-56-601	SUB HWT CSG/B TO PWT CSG/P
93-56-620	SUB HWT CSG/B TO PWL/BIT THRD
93-56-621	SUB PWT CSG/B TO PW CSG/P
93-56-622	SUB PW CSG/B TO PWT CSG/P

Sub, Rod



Part Number	Description
-------------	-------------

93-52-100	SUB EX R/B TO EW R/P
93-52-101	SUB EX R/B TO EW R/B
93-52-200	SUB AW R/B TO EW R/P
93-52-201	SUB AW R/B TO BW R/P
93-52-202	SUB AW R/B TO AX R/P
93-52-210	SUB AX R/B TO AW R/P
93-52-300	SUB BW R/B TO AW R/P
93-52-301	SUB BW R/B TO NW R/P
93-52-400	SUB NW R/B TO BW R/P
93-52-410	SUB NX R/B TO BW R/P
--	
93-53-100	SUB EW R/P TO EW R/P
93-53-200	SUB AW R/P TO AW R/P
93-53-201	SUB AW R/P TO BW R/P
93-53-210LG	SUB AX R/P TO AW R/P LRG BORE
93-53-300	SUB BW R/P TO BW R/P
93-53-301	SUB BW R/P TO NW R/P
93-53-400	SUB NW R/P TO NW R/P
93-53-410	SUB NX R/P TO BW R/P

** R/B = Rod Box R/P = Rod Pin **

North America 1-800-669-3542
International +1-705-647-8138

PAGE: DE31



www.timeltd.ca

Drilling & Exploration - Rods/Couplings

Conventional Rods and Couplings Parts Lists

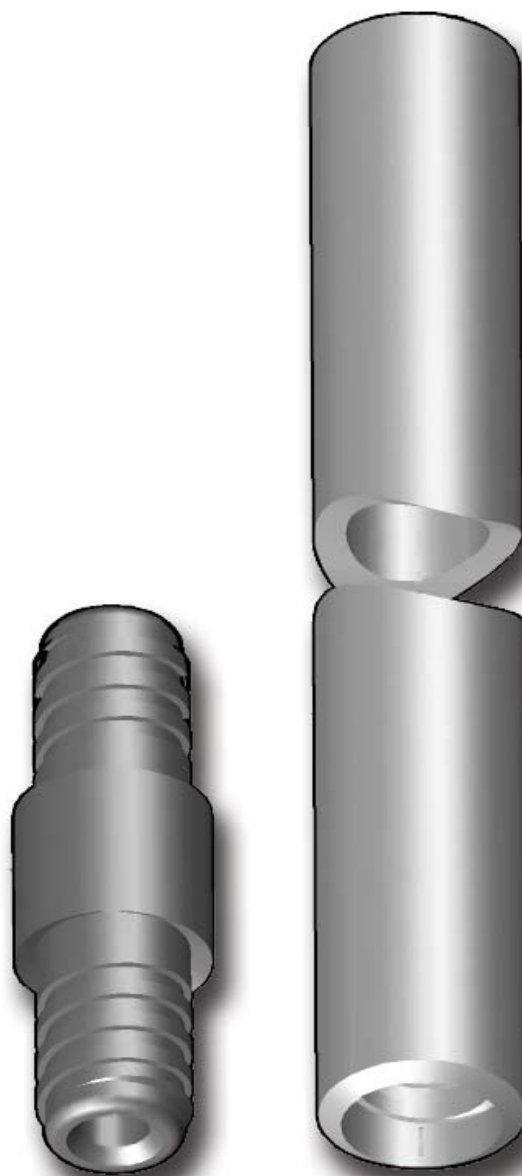
Conventional Rods

Part Number	Description
91-10-102	ROD EW 2'
91-10-105	ROD EW 5'
91-10-110	ROD EW 10'
91-10-201	ROD AW 1'
91-10-202	ROD AW 2'
91-10-204	ROD AW 4'
91-10-205	ROD AW 5'
91-10-206	ROD AW 6'
91-10-210	ROD AW 10'
91-10-211	ROD AW 11'4"
91-10-212	ROD AW 12'
91-10-202X	ROD AX 2'
91-10-204X	ROD AX 4'
91-10-205X	ROD AX 5'
91-10-210X	ROD AX 10'
91-10-211X	ROD AX 11'4"
91-10-301	ROD BW 1'
91-10-302	ROD BW 2'
91-10-305	ROD BW 5'
91-10-310	ROD BW 10'
91-10-401	ROD NW 1'
91-10-402	ROD NW 2'
91-10-405	ROD NW 5'
91-10-410	ROD NW 10'

Rod Couplings

Part Number	Description
91-10-119	EW ROD CPLG
91-10-219	AW ROD CPLG
91-10-219LG	AW ROD CPLG LARGE BORE
91-10-219X	AX ROD CPLG LARGE BORE
91-10-319	BW ROD CPLG
91-10-319LG	BW ROD CPLG LARGE BORE
91-10-419	NW ROD CPLG
91-10-419LG	NW ROD CPLG LARGE BORE

Conventional Rods and Couplings Pictures



Rod Description

Rods are available in various lengths (from 1' - 12') and thread profiles.

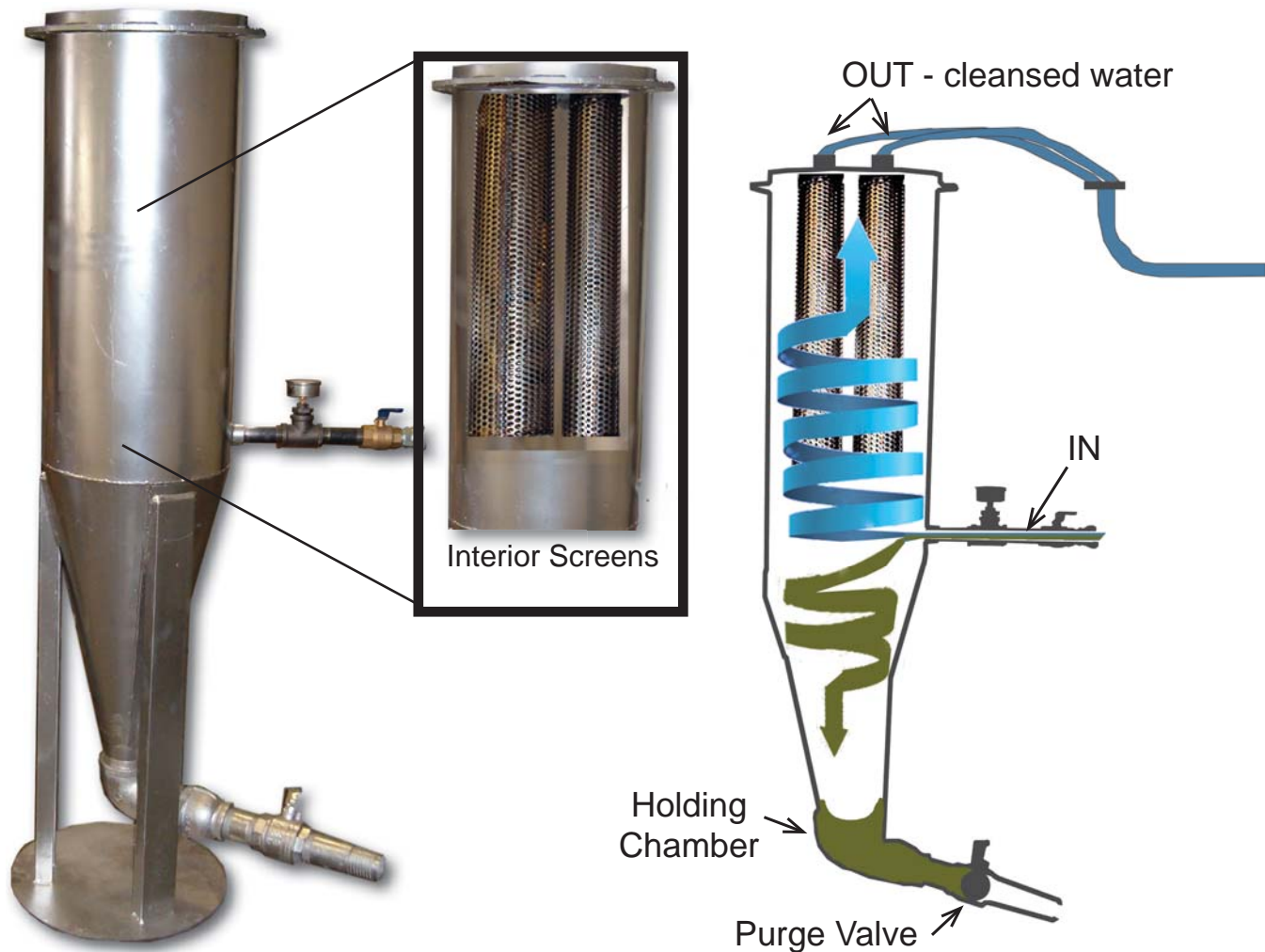
If you don't see the thread profile you are looking for, we have it, please contact us at **1-800-669-3542** or email **info@timeltd.ca**.



Drilling & Exploration - Sludge Collector

Sludge Collector

Sludge Collectors are devices that utilize centrifugal forces and low pressure caused by spinning motion to separate materials of differing density, size, and shape. They are popular because they are simple and inexpensive to operate, require little maintenance and contain no moving parts.



Working Principle: Contaminated water passes through the separator in a high velocity circular motion. Centrifugal force slings the particulates, sand, debris, and sludge outward to the collectors wall and downward. Gravitational force pulls the sludge downward into the solids holding chamber. Cleansed water then rises through the vortex locator and returns back to the system.

The Sludge Collector has no slotted baffles, moving parts or filter media to cause unnecessary pressure loss. No maintenance is required; however periodic opening of the purge valve is necessary to dispose of unwanted sludge.

Description	Part Number
Sludge Collector	92-1007

North America 1-800-669-3542
International +1-705-647-8138

PAGE: DE33



www.time ltd.ca

Drilling & Exploration

Waterline Heater

WATERLINE HEATER

Waterline Heaters come fully assembled and are available in two styles: propane or diesel oil.

Features:

- heavy duty construction
- horizontal water tank heater
- sleigh-mounted
- heat exchanger for high efficiency
- tested to 100 PSI water pressure
- light - easily transported and installed
- fully insulated housing

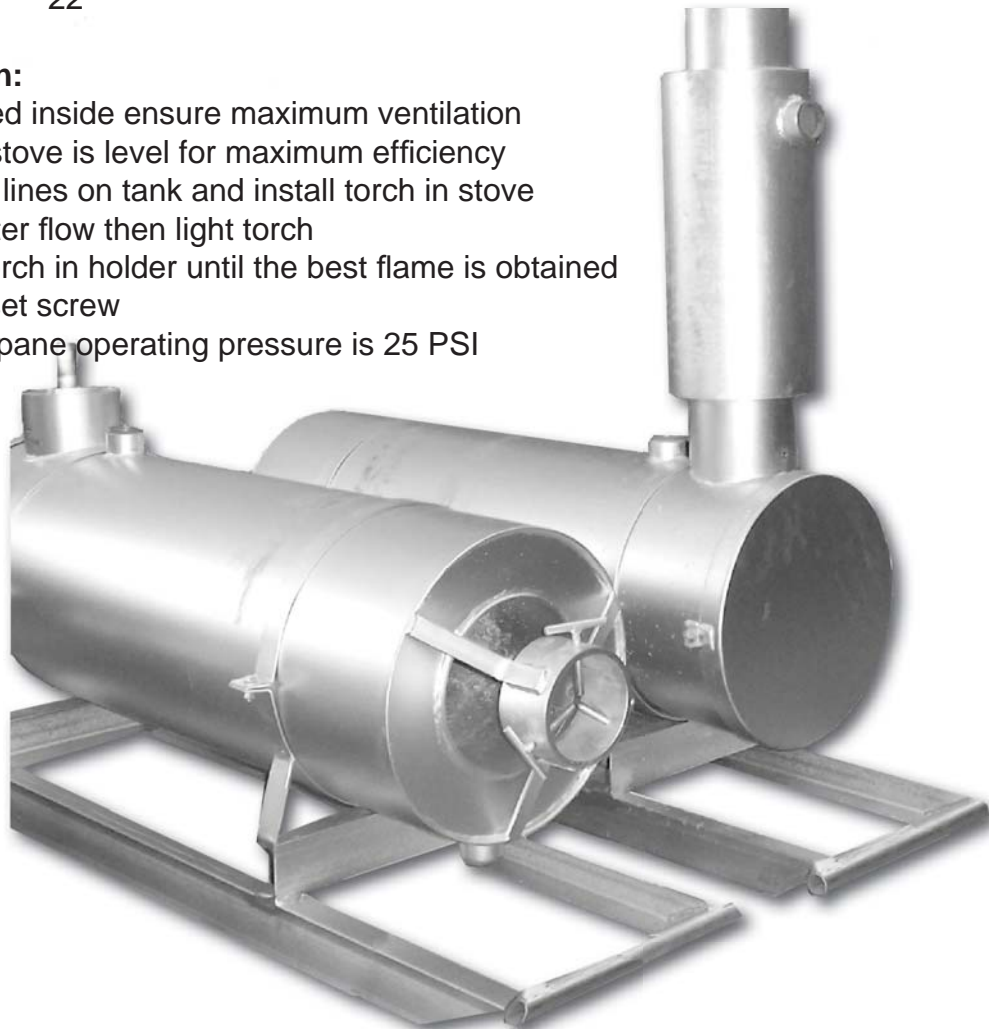
Specifications:

- Weight: 190 lbs/ 86 Kg
- Length: 47"
- Height: 27"
- Width: 22"

Easy Installation:

- if installed inside ensure maximum ventilation
- ensure stove is level for maximum efficiency
- hook up lines on tank and install torch in stove
- start water flow then light torch
- adjust torch in holder until the best flame is obtained
- tighten set screw
- best propane operating pressure is 25 PSI

Description	Part Numbers
Propane powered Waterline Heater	13009
Diesel powered Waterline Heater	13009-OIL
Tiger Torch Regulator	GR330
Tiger Torch with thermo couple	FT15-500SV



Drilling & Exploration - Camp Stove

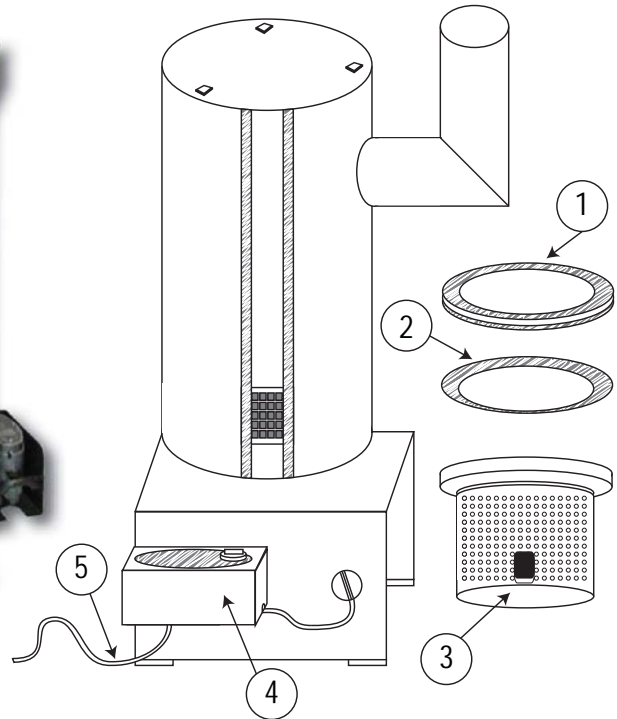
Camp Stove



Standard
Camp Heater



Northern Lights
Camp Heater



TIME Standard and "Northern Lights" camp heaters come fully assembled and are ready to be fueled by diesel oil or kerosene.

Assembly includes long hose, fittings, and 60 cc, CSA Approved carburetor.

Replacement parts are available.
Standard Camp Heater
Product No: 91-01-000

Features:

- Safety fuel shut off system
- Internal fuel filter
- Manual flow adjustment
- 100,000 BTU

Item	Description	Product Number
1	High Fire Ring	91-01-022
2	Low Fire Ring	91-01-028
3	Breeze Pot	91-01-011
4	CSA Approved Carburetor (60 cc.)	91-01-012B
5	Hose Assembly (3/8")	91-01-014

Double Walled "Northern Lights" Camp Heater

Product No: 91-01-000DW

Designed by TIME to address human and property safety by diminishing the risk of fires and burns as well as to allow for even heat distribution in the drill shack.

Features:

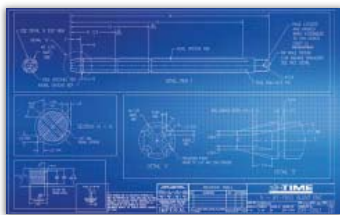
- Double wall with insulating space to reduce risk of burns and sparks
- Vented blower for more even heat distribution
- Fire pot is enclosed at front with solid sliding door for repairs and maintenance and at back with louvered door for air intake
- 162,400 BTU



Manufacturing and Fabrication

Design and Innovation

The TIME team takes pride in providing customers with quality products and the absolute best service with a personal touch.



Not only does TIME distribute a number of quality product lines, we also manufacture a number of our own core products. In conjunction with our fabrication and machining capabilities, we have a team that has well over 250 years of experience in the mining, diamond drilling, and various industrial sectors. With the technical knowhow, we offer design capabilities specifically focused on new product development, innovative design, and problem solving.

We can manufacture to your requirements, or provide complete design and drafting expertise in-house.

RESPONDING TO CUSTOMER NEEDS

Our mandate is to exceed our customer's expectations.
Peter R. Henderson, President

MACHINING

TIME Limited's machining shop uses a combination of heavy duty, big and small bore lathes, CNC milling machines, CNC lathes and conventional lathes.



Here are some of our featured equipment and capabilities:



Hurco TM-18 Heavy Duty Lathe
a. Bar Capacity: 6.4 inch bar capacity
b. Turning Diameter: 25 inch max
c. Turning Length: 39.4 inch max
d. Travel: 17x, 40z inch
e. Quick Change air collect chuck system



Nakamura-Tome WT300MMYS
a. 9-axis, 2 turret multitasking machining
b. Bar Capacity: 65mm (l) and 102mm (r)
c. Turning diameter: 270mm max turning
d. Turning length: 780mm max
e. Quick Change air collect chuck system
f. Chip Blaster GV2-40 high pressure coolant system



Hurco VMX50 Milling Machine
a. 3-axis milling machine
b. Travel: 50 x 26 x 24 inch
c. Table Size: 59 x 26 inch
d. Tool Capacity: 30 CAT 50
e. Magnetic Material Holder

Other Machines include:
CNC lathes such as ROMI M27 heavy duty big bore lathe and ROMI M20 small bore lathe, as well as a host of conventional lathes.

CNC milling machines such as MAZAK Fadal VMX4020FX mill, and FIRST LC-185v-B milling machine, as well as a host of conventional milling machines



Our Newest Toys!



TIME OFFICES

We supply mine-grade products, manufacture quality products, offer design, fabrication and custom machining, as well as sourcing. We are your one-stop shop for industrial needs.

Head Office

Haileybury **Sudbury**
Tel: 705-647-8138 Tel: 705-524-8903
Fax: 705-647-9800 Fax: 705-524-9140

Val d'Or

Timmins
Tél: 819-874-8138 Tel: 705-268-8128
Fax: 819-874-8139 Fax: 705-268-5122

info@timeltd.ca www.timeltd.ca

FABRICATION

TIME Limited's welding and fabrication shop has full capabilities for custom work. Our shop includes a large plasma table, capable of cutting material up to 8' X 20', 2 10,000 lbs SMH Overhead Cranes, an AKBEND ASM-S 17 roller and a brand new, iBend CNC Hydraulic Press Brake.



Our welding shop is certified by the Canadian Welding Bureau annually.



www.timeltd.ca



Serving the Mining Industry Since 1971

Manufacturing and Fabrication



Our brand new, State of the art, 40,000 Sq. ft. Manufacturing, Fabrication and Warehousing facility

705-647-8138

www.timeltd.ca

STOCKING WAREHOUSE



TIME Limited's philosophy is to stock what our customers need. If we don't have it, and you need it on a regular basis, just ask and we will do our best to add it to our ever-growing warehouse.

We carry everything from Health and Safety to Hand tools, mining and diamond drilling products, TIME branded hoses and Gates fittings.



TIME Limited also fixes or makes your hydraulic hoses while you wait.



rev 4292016en



North America 1-800-669-3542
International +1-705-647-8138

PAGE: DE36



www.timeltd.ca