



Fluid & Air Transfer - Air Hose

Air Hose



MINE AIR/WATER HOSE

For mining, construction and industrial use where 400 PSI service is required. Mandrel built.

- Yellow cover - weather, cut & abrasion resistant synthetic rubber
- Smooth black, oil mist resistant, synthetic rubber tube
- Reinforced with multiple layers of high tensile, spiraled synthetic wound yarn
- Temperature range: -40°C to +82°C (-40°F to +180°F)
- Sizes: ½" – 4" I.D.
- Standard length - 50' (other lengths available)

Product Number	I.D. inches	O.D. inches	Max W.P. PSI	Approx Wt. Per ft. lbs.
46-MH-050-050	0.5	0.95	400	0.31
46-MH-075-050	0.75	1.26	400	0.41
46-MH-100-050	1	1.54	400	0.61
46-MH-125-050	1.25	1.89	400	0.81
46-MH-150-050	1.5	2.12	400	0.91
46-MH-200-050	2	2.63	400	1.2
46-MH-300-050	3	3.7	400	2.37
46-MH-400-050	4	4.8	400	3.3

WIRE REINFORCED AIR HOSE

- High pressure air service to mining, construction & industrial use
- Yellow cover with red stripe
- Cut & gouge resistant synthetic rubber
- Reinforced with layers of high tensile steel wire
- Temperature Range: -40°C to +85°C
- Sizes: ½" – 4" I.D..
- Standard length - 50' (other lengths available)

Product Number	I.D. inches	O.D. inches	Max W.P. PSI	Approx Wt. Per ft. lbs.
46-MHWR-050-050	0.5	0.8	600	0.44
46-MHWR-075-050	0.75	1.14	600	0.54
46-MHWR-100-050	1	1.3	600	0.68
46-MHWR-125-050	1.25	1.66	600	0.83
46-MHWR-150-050	1.5	2.05	600	1.12
46-MHWR-200-050	2	2.63	600	1.58
46-MHWR-250-050	2.5	3.27	450	2.4
46-MHWR-300-050	3	3.78	450	2.86
46-MHWR-400-050	4	4.8	450	4.13

TIME Hose Assemblies



Product Number	Size
46MH050050QL	Hose Asm, 1/2" x 50' 400 PSI w/ TIME Quick Lock Ends
46MH100050QL	Hose Asm, 1" x 50' 400 PSI w/ TIME Quick Lock Ends
46MH150050QL	Hose Asm, 1-1/2" x 50' 400 PSI w/ TIME Quick Lock Ends
46MH200050QL	Hose Asm, 2" x 50' 400 PSI w/ TIME Quick Lock Ends
46MH050050SN	Hose Asm, 1/2" x 50' 400 PSI w/ TIME Stem and Nut Ends
46MH100050SN	Hose Asm, 1" x 50' 400 PSI w/ TIME Stem and Nut Ends
46MH150050SN	Hose Asm, 1-1/2" x 50' 400 PSI w/ TIME Stem and Nut Ends
46MH200050SN	Hose Asm, 2" x 50' 400 PSI w/ TIME Stem and Nut Ends
46MH200050GRV	Hose Asm, 2" x 50' 400 PSI w/ TIME Grooved Ends



North America 1-800-669-3542
International +1-705-647-8138

PAGE: FA2



www.timeltd.ca

Fluid & Air Transfer - Drill Hose

Drill Hose

EPDM MULTI-PURPOSE HOSE

Air, water, agricultural spray solutions and other diluted chemicals. Good resistance to heat, weathering and vegetable oils.

- Smooth red cover; black EPDM tube
- Oil mist resistant
- Reinforced with layers of high tensile polyester yarn
- Temperature range: -40°C to +93°C



Product Number	I.D. Inches	O.D. Inches	Max W.P. PSI	Approx Wt. Per ft. lbs.
46-DH-100-100	1	1.37	200	0.51
Product Number	Description			
46DH100100UN	Hose asm 1"x100 w/universal ends			
46DH100100LS	Hose asm 1"x100 w/brass long shanks			

Hose Anchor

HOSE ANCHOR by WHIPCHEK®

These strong steel cables prevent hose whip in the event of accidental separation of coupling or clamp device.

WHIPCHEK® reaches across the hose fittings to provide stand-by safety for any type of hose. Spring loaded loops in the cable ends open easily to pass over the couplings, for firm grip on hose (see illustration). Thoroughly tested with years of service.

Must be installed in the extended position (no slack).

Highly resistant to rust and corrosion. No tools needed; easy to install and remove.

Product Number	Description
221-04	1/8" cable for 1/2" - 1-1/4" incl. hose size, 20-1/2" long
221-05	1/4" cable for 1-1/2" to 3" hose size, 38-1/4" long
22104STAINLESS	Whipcheck SS 1/2" to 1-1/4" Hose, 22" LG
22105STAINLESS	Whipcheck SS 1/4" to 3" Hose, 36" LG



Whipsock Hose Restraints

Whip socks are used to restrain high pressure hoses. The whip sock has a unique design that prevents the very real and unpredictable whipping of a high pressure hose during a failure. The real genius behind these new designs is the woven steel that grips and tightens over a large area of the hose as it suppresses and confines the hose that has ruptured.

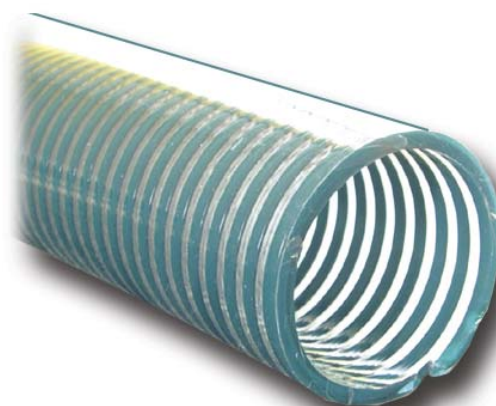
The whip sock is just one more way for a company to make a potentially dangerous workspace much safer for employees. The whip sock is also one more way to prevent a good deal of damage to adjacent equipment if there were to be a high pressure breakdown.

Product Number	Description
HR40-50MM	Whipsock Hose Restraints 1-1/4" Hose
HR50-60MM	Whipsock Hose Restraints 1-1/2" Hose
HR60-70MM	Whipsock Hose Restraints 2" Hose
HR70-85MM	Whipsock Hose Restraints 2-1/2" Hose
HR85-100MM	Whipsock Hose Restraints 3" Hose



Fluid & Air Transfer - Hose

Suction & Discharge



RUBBER WATER SUCTION & DISCHARGE

- Smooth black synthetic rubber
- Abrasion resistant
- Textile reinforced with heavy wire
- Temperature range: -32°C to +82°C

HEAVY DUTY

A heavy duty rubber suction hose for construction quarries & general use.

Suitable for full vacuum.

Product Number	I.D. inches	O.D. inches	Bend Radius Inches	Max W.P. PSI	Approx Wt. Per ft. lbs.
46-RSD-100	1	1.38	8	100	0.53
46-RSD-125	1-1/4	1.73	10	100	0.75
46-RSD-150	1-1/2	1.97	12	100	0.87
46-RSD-200	2	2.45	16	100	1.12
46-RSD-300	3	3.50	27	100	1.84
46-RSD-400	4	4.59	36	75	3.43
46-RSD-500	5	5.61	45	75	4.81
46-RSD-600	6	6.61	54	75	4.92

PVC SUCTION & DISCHARGE

- Smooth clear PVC
- Excellent weather and abrasion resistance
- Temperature range: -20°C to +70°C

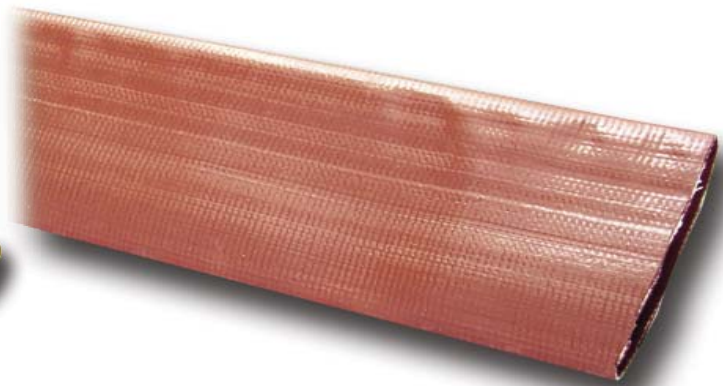
HEAVY DUTY

For construction pumps, septic tank and marine pump out service, mining & quarry use. Suitable for full vacuum. PVC is resistant to some chemicals, acids and alkalis. Reinforced with green PVC helix.

Product Number	I.D. inches	O.D. inches	Vacuum Rating	Bend Radius Inches	Max W.P. PSI	Approx Wt. Per ft. lbs.
46-PSD-100	1	1.26	28	3	85	0.26
46-PSD-125	1-1/4	1.56	28	4	85	0.35
46-PSD-150	1-1/2	1.83	28	5	70	0.48
46-PSD-200	2	2.32	28	7	65	0.66
46-PSD-250	2-1/2	2.87	28	8	65	0.87
46-PSD-300	3	3.43	28	10	65	1.24
46-PSD-400	4	4.50	28	15	55	1.85



Layflat Hoses



RUBBER LAYFLAT AIR HOSE

An economical EPDM multi-purpose hose used in construction, marine and industrial applications.

- Yellow nitrile tube
- Reinforced with circular woven 100% polyester yarn
- Resistant to abrasion, oil and weathering
- Temperature Range: -30°C to +100°C

Product Number	I.D. Inches	O.D. inches	Max W.P. PSI	Approx Wt. Per ft. lbs.
221-153	3/4	0.98	300	0.20
221-225	1	1.24	300	0.20
221-161	1-1/2	1.74	300	0.25
221-100	2	2.28	300	0.35
221-154	3	3.40	250	0.52
221-155	4	4.29	200	0.57

PVC LAYFLAT HOSE

Hose folds flat for ease of coiling and handling. Designed for use where higher working pressures are required.

- Brown PVC impregnation tube and cover
- Reinforced with woven high tensile synthetic yarn
- Temperature range: -21°C to +54°C

Product Number	I.D. Inches	O.D. Inches	Max W.P. PSI	Approx Wt. Per ft. lbs.
227-17	1-1/2	1.64	120	0.22
227-05	2	2.14	115	0.29
227-13	3	3.17	100	0.43
227-14	4	4.18	100	0.60
227-06	6	6.18	80	1.01



Fluid & Air Transfer - Hose

Anti-Static Loading Hose

A specially formulated anti-static PVC loading for the loading of ammonium nitrate/fuel oil blasting agents used in the mining and construction industries.

Construction:

Specially-formulated anti-static PVC compound.

Features:

- Conductivity – effectively limits build-up of static electricity; provides path for its safe dissipation to ground.
- Bleeds off static charges built up during pneumatic loading of Ammonium Nitrate/Fuel Oil mixtures.
- Sufficient resistance – guards blasting circuit against stray electrical currents.
- Wear resistance – smooth interior and exterior surfaces, combined with tough material formulation, provide good wear resistance.
- Self-extinguishing characteristics.
- Excellent flexibility – sufficiently flexible to handle easily, yet rigid enough to reach upwards into collars of steeply-inclined holes.
- Easily identifiable – co-extruded continuous orange stripe makes tubing visible in underground lighting.
- Embossed branding – provides lasting identification.
- Packaged for ease of handling and shipping.



Applications:

- Bulk unloading of ammonium nitrate/fuel oil blasting agents in small diameter holes.
- Successfully used for years with Orica's blast hole chargers, intermediate loaders and the Penberthy Anoloader.
- Mining and construction site blasting.

Series No.	Size Code	Inside Diameter		Approx. O.D.		Max. W.P.		Approx. Mass per 100 ft. (lbs.)	Approx. Mass per 100 m (kg.)	Length/Coil	
		Inches	mm	Inches	mm	PSI	MPa			ft.	m
221-35	10	0.63	16	0.859375	22	120	0.83	17.5	25	200	61
221-3534	12	0.75	19	1.06	27	120	0.83	28	40	200	61
221-351	16	1	25	1.33	34	120	0.83	38	55	300	91
221-35114	20	1.25	32	1.63	41	120	0.83	55	78	100	30

Service Temperature Range: -30°F (-35°C) to +150°F (+65°C)

NOTE: A new coil of tubing can have its pliancy restored by the application of heat before it is placed in service underground. This will facilitate handling and its attachment to pneumatic loading equipment. Steam or very hot water passed through the coiled tubing will remove the "set" from the new tubing and allow it to be straightened easily. The tubing should then be left to cool in the straight position.



Rubber Hose Strainer



Heavy Duty Suction Hose Assembly - 2", 3" or 4" X 25' complete with grooved end. Made of heavy duty 6 ply non-wired hose, to ensure the hose will keep its shape, resist abrasion and will not crush.

Product Number	Size
DP69225	2"
DP69325	3"
DP69425	4"

Foot Valves & Strainers



Basket Strainer Without Valves

Round hole basket strainers are made from zinc plated metal. Strainers are used to allow adequate flow without allowing debris that may harm the pump. Non valved.

Product Number	Size
960-03	1-1/2"
960-05	2"
960-09	2-1/2"
960-06	3"
960-07	4"



Foot Valve and Strainer

Foot valves and strainers are made from cast iron and have a leather or rubber flapper that closes to prevent the pump from losing its prime. Ideal for suction pumps using control floats.

Product Number	Size
962-00	1-1/2"
962-01	2"
962-02	2-1/2"
962-03	3"
962-04	4"



Fluid & Air Transfer - Couplings/Fittings

TIME Water & Air Hose Fittings

Recommendation for a safe working environment:

Correct identification of the hose inside diameter and correct measurement of the hose outside diameter are critical to the proper and safe operation of the hose assembly. Be careful to match the size of the fittings and clamps to the size of the hose they are to be used with. Improperly sized components lead to leaks and coupling "blow offs".



Mining Stems and Nuts



Product Number	Description	Size
200-00	Hose Stem	1/2" x 1/2"
200-01	Hose Stem	1/2" x 1"
200-02	Hose Stem	3/4" x 1"
200-03	Hose Stem	1" x 1"
200-04	Hose Stem	1-1/4" x 1-1/4"
200-05	Hose Stem	1-1/2" x 5-1/4"
200-06	Hose Stem - XL	1-1/2" x 7"
200-07	Hose Stem	2" x 5-1/2"
200-08	Hose Stem - XL	2" x 8"
201-00	Hose Nut	1/2"
201-01	Hose Nut	1"
201-02	Hose Nut	1-1/4"
201-03	Hose Nut	1-1/2"
201-06	Hose Nut	2"

Hose Joiners



Product Number	Description	Size
202-00	Hose Joiners	1/2"
202-01	Hose Joiners - XL	1/2" x 4 1/2"
202-04	Hose Joiners	3/4"
202-02	Hose Joiners	1"
202-03	Hose Joiners - XL	1" x 6-1/2"
202-05	Hose Joiners	1-1/4" x 5"
202-06	Hose Joiners - XL	1-1/4" x 8"
202-07	Hose Joiners	1-1/2" x 5 3/8"
202-08	Hose Joiners - XL	1-1/2" x 8-3/4"
202-09	Hose Joiners	2" x 5-3/4"
202-10	Hose Joiners - XL	2" x 8-3/4"
202-27	Hose Joiners	3" x 6 5/8"
202-26	Hose Joiners	4" x 8 3/4"
202-15	Hose Joiners	6" x 10"



Fluid & Air Transfer - Couplings/Fittings

TIME Water & Air Hose Fittings

Hose Stem to NPT	
Product Number	Size
207-14	1/2"
207-15	3/4"
207-00	1"
207-09	1-1/4"
207-02	1-1/2"
207-26	2"
207-03	2-1/2"
207-04	3"
207-05	4"



Hose Stem Grooved	
Product Number	Size
207-01	2"
207-16	2" Long
207-11	3"
207-10	4"
207-35	4" Long
207-30	6"



Heavy Duty Pipe Nipples

Threaded & Chamfered both ends	
Product Number	Size
205-01	1" X 3"
205-03	1-1/4" X 4"
205-04	1-1/2" X 4"
205-06	2" X 5"

Threaded to Groove	
Product Number	Size
205-02	1" X 3"
207-160	2" X 4"
207-25	3" X 4"
207-44	4" X 4"



Mining Spuds - Male/Female

Product Number	Description	Size
204-08	Air Hose Spuds	1/2"M x 1"F
204-06	Air Hose Spuds	1"M x 1/4"F
204-05	Air Hose Spuds	1"M x 3/8"F
204-02	Air Hose Spuds	1"M x 1/2"F
204-01	Air Hose Spuds	1"M x 3/4"F
204-00	Air Hose Spuds	1"M x 1"F
204-09	Air Hose Spuds	1-1/4"M x 1"F
204-10	Air Hose Spuds	1-1/4"M x 1-1/4"F
204-07	Air Hose Spuds	1-1/2"M x 1-1/4"F
204-12	Spud Screen	



Mining Spuds - Male/Male

Product Number	Description	Size
204-03	Water Valve Union Spuds	1/2"M x 3/8"M
204-04	Water Valve Union Spuds	1/2"M x 1/2"M
203-00	Water Goose Neck Spuds	1"M x 3/8"M
203-01	Water Goose Neck Spuds	1"M x 1/2"M
203-02	Spud Screen	



Fluid & Air Transfer - Quick Lock

Quick Lock Fittings



The Quick Lock coupling is a multi-purpose coupling for the construction and mining industries to handle air and water.

The name says it all, Quick Lock, connections are made with ease, speed and safety while maintaining a very economical system.

Specifications:

- Available in 3/8" through 2"
- Body: Carbon Steel
- Bellow seal: Buna-Nitrile
- Working pressure: 500 PSI

Bellow Seal

The seal is made of Buna-Nitrile which is more resistant to oil and acids than natural rubber. It is a pressure seal that allows easy coupling and creates a gasket seal upon introduction of line pressure.

Benefits:

- Reduced leakage
- No special tool to remove the seal
- 100% Interchangeable with existing fittings

Safety pins are required as a safety precaution.



Product Number	Description
QLSEAL-1	Seal Quick Lock 1/2" To 1-1/4"
QLSEAL-2	Seal Quick Lock 1-1/2" To 2"

Product Number	Description
11/001/00	Locking Pin

Quick Lock ADP Female	
Product Number	Description
QL038F	ADP Quick Lock 3/8" NPT/F
QL050F	ADP Quick Lock 1/2" NPT/F
QL075F	ADP Quick Lock 3/4" NPT/F
QL100F	ADP Quick Lock 1" NPT/F
QL150F	ADP Quick Lock 1-1/2" NPT/F
QL200F	ADP Quick Lock 2" NPT/F
QL200X1F	ADP Quick Lock 2"X1" NPT/F
Quick Lock ADP Male	
Product Number	Description
QL038M	ADP Quick Lock 3/8" NPT/M
QL050M	ADP Quick Lock 1/2" NPT/M
QL075M	ADP Quick Lock 3/4" NPT/M
QL100M	ADP Quick Lock 1" NPT/M
QL150M	ADP Quick Lock 1-1/2" NPT/M
QL200M	ADP Quick Lock 2" NPT/M
Quick Lock Stem	
Product Number	Description
QL050HS	Stem Quick Lock 1/2"
QL100HS	Stem Quick Lock 1"
QL150HS	Stem Quick Lock 1-1/2"
QL200HS	Stem Quick Lock 2"



Fluid & Air Transfer - Couplings/Fittings

Universal Hose Fittings

Universal Quick Acting Hose Ends - Malleable Iron



Product Number	Size	Lugs
211-37	3/8"	2
211-01	1/2"	2
211-04	3/4"	2
211-07	1"	2
211-34	1-1/4"	4
211-36	2"	4

Universal Rubber Washer



Product Number	Size
211-10	3/8" - 1"
211-41	1-1/4" - 2"

Universal Locking Pin



Product Number	Description
11/001/00	Locking Pin

Universal Quick Acting Female and Male NPT Ends Malleable Iron



Female Ends

Product Number	Size	Lugs
211-00	3/8"	2
211-03	1/2"	2
211-06	3/4"	2
211-09	1"	2
211-11	1-1/4"	4
211-33	2"	4

Male Ends

Product Number	Size	Lugs
211-38	3/8"	2
211-02	1/2"	2
211-05	3/4"	2
211-08	1"	2
211-39	1-1/4"	4
211-40	2"	4



Fluid & Air Transfer

Quick Connect Fittings



Product Number	Description
91-18	Plug 1" MNPT Steel
91-17	Plug 1" MNPT Brass
91-14	Plug 3/4" MNPT Steel
90-21	Socket 1" MNPT Brass
90-22	Socket 1" FNPT Brass
90-17	Socket 3/4" MNPT Brass
90-18	Socket 3/4" FNPT Brass



Punch-Lok

PUNCH-LOK CLAMPS

Punch-Lok clamps are available in a variety of materials to suit your needs.

- high strength galvanized carbon steel clamps – satisfy nearly all requirements
- stainless steel clamps – recommended for use in corrosive situations

HIGH-STRENGTH GALVANIZED & STAINLESS STEEL CLAMPS CHART

Also available: open-clamps, and related tools.

Galv. Product #	S.S. Product #	Item	Clamp I.D.	Band Width	Clamps per Std. Carton	Shipping Weight Lbs/ Carton
232-01	233-09	P-4	1"	5/8"	100	8.8
232-02	233-12	P-5	1-1/4"	5/8"	100	9.1
232-03	233-00	P-6	1-1/2"	5/8"	100	10.6
232-04	233-07	P-7	1-3/4"	5/8"	100	11.2
232-05	233-08	P-8	2"	5/8"	100	11.4
232-07	233-13	P-9	2-1/4"	5/8"	100	11.8
232-06	233-04	P-10	2-1/2"	5/8"	50	6.1
232-18	233-06	P-11	2-3/4"	5/8"	50	6.6
232-09	233-01	P-12	3"	5/8"	50	8.0
232-10	233-05	P-14	3-1/2"	5/8"	50	8.4
232-11	233-02	P-16	4"	5/8"	25	5.2
232-12	233-14	P-18	4-1/2"	5/8"	25	5.8
232-13	233-10	P-20	5"	5/8"	25	6.2
232-14	233-03	P-24	6"	5/8"	25	6.8
232-19	233-11	P-28	7"	5/8"	50	13.8



To order clamps:

1. Insert fitting into hose.
2. Measure the outside diameter of the hose.
3. Select the clamp with the next larger inside diameter clamp.

PUNCH-LOK CLAMPING TOOL

Designed for fast, economical application of punch-type clamps.

Weight: 1-1/2 lbs



Product Number	Description
229-00	Punch-Lok Tool



Fluid & Air Transfer - Couplings

Male Adapter / Female NPT



Part "A"

Female Coupler / Male NPT



Part "B"

Female Coupler / Hose Shank



Part "C"

Female Coupler / Female NPT



Part "D"

Aluminum Cam & Groove Couplings

Aluminum cam type couplers are the most popular couplers in the industry for transfer of water and other non-corrosive fluids. Available in sizes from 1" to 6".

Specification

- Body: 365 aluminum
- Arms: SS302
- Ring & Pins: Plated Steel
- Made to MIL spec A-A-59326

Notes

- * Not for use with compressed air

Also available in Stainless Steel

Size	Part A	Part B	Part C	Part D	Part E	Part F	Part DC	Part DP
1"	219-02	219-124	219-24	219-34	219-46	219-65	219-74	219-76
1-1/4"	219-571	219-203	219-202	219-35	219-572	219-57	219-134	219-135
1-1/2"	219-04	219-15	219-25	219-36	219-47	219-58	219-69	219-78
2"	219-05	219-16	219-26	219-37	219-48	219-59	219-70	219-80
2-1/2"	219-110	219-125	219-56	219-127	219-18	219-60	219-71	219-136
3"	219-07	219-17	219-28	219-39	219-50	219-61	219-72	219-81
4"	219-08	219-128	219-29	219-120	219-51	219-62	219-73	219-82
6"	219-54	219-116	219-53	219-21	219-126	219-22	219-83	219-84

Maximum Pressure Rating PSI For Cam & Groove Couplings

Size	Aluminum/Brass	Stainless	Polypropylene
1	250	250	125
1-1/4	250	250	100
1-1/2	250	250	100
2	250	250	100
2-1/2	150	150	N/A
3	125	200	75
4	100	100	75
6	75	100	N/A

Male Adapter / Hose Shank



Part "E"

Male Adapter / Male NPT



Part "F"

Dust Cap



Part "DC"

Dust Plug

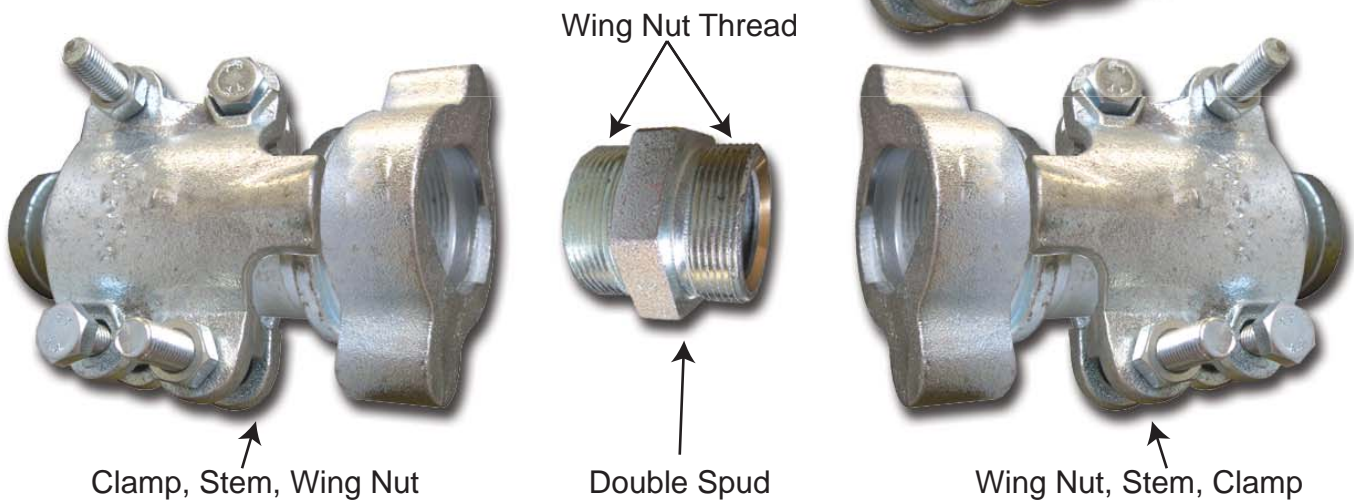
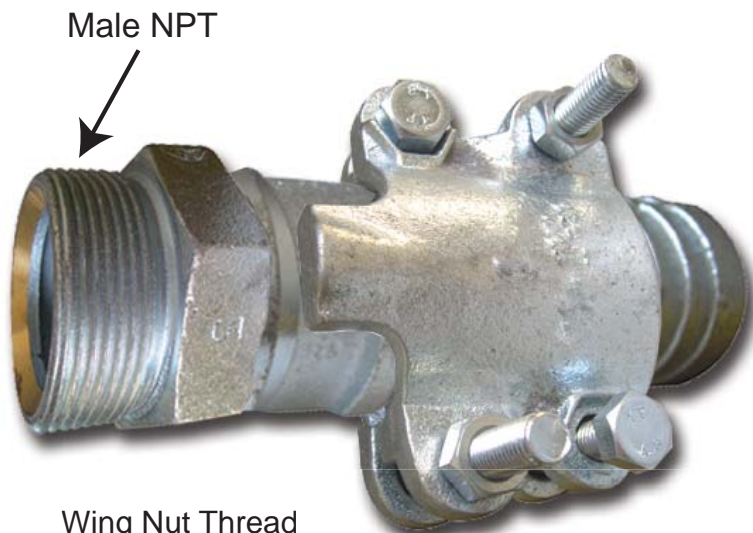
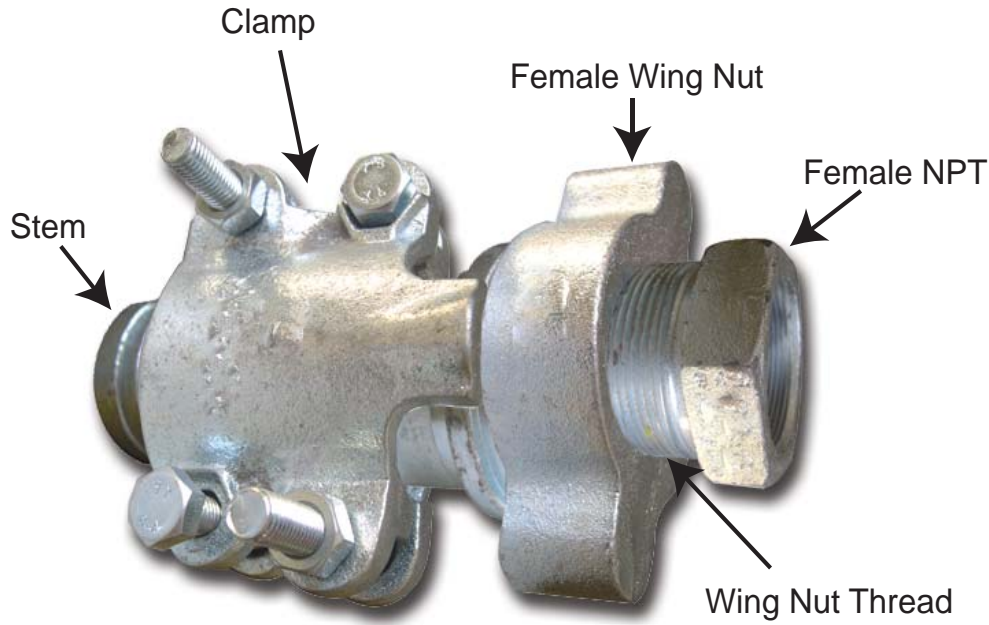


Part "DP"



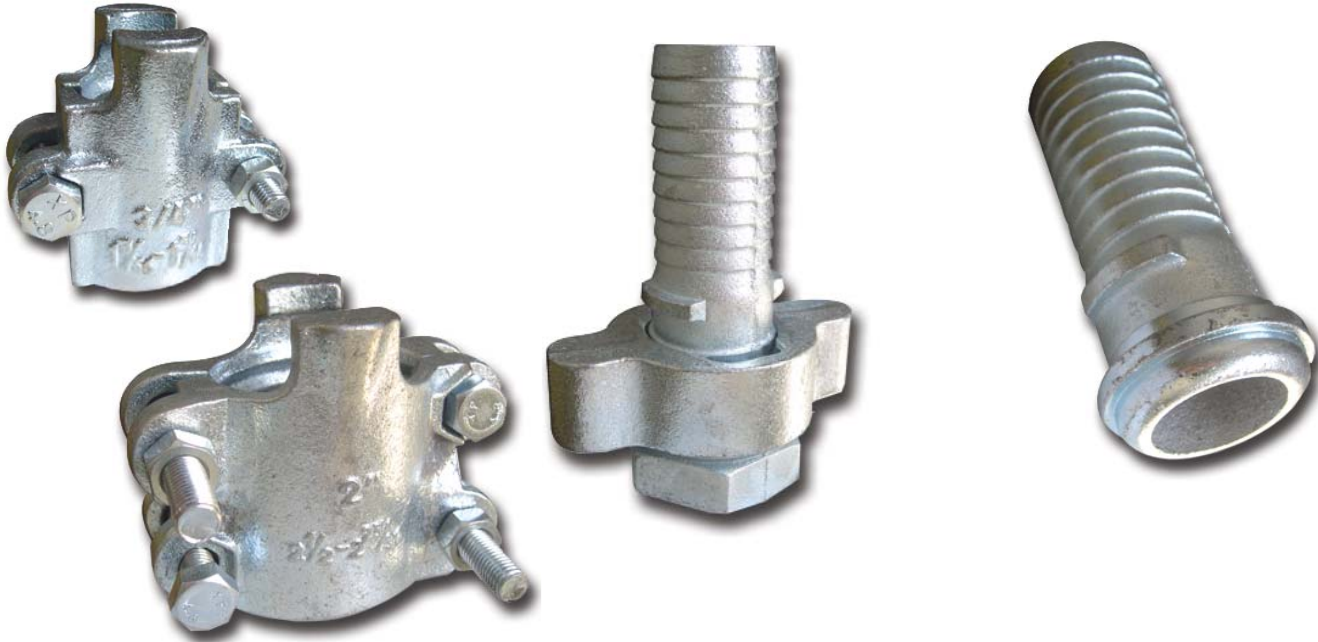
Fluid & Air Transfer - Couplings/Fittings

High Pressure Clamp Fitting Assemblies



Fluid & Air Transfer - High Pressure

High Pressure Clamp Fittings



High Pressure Clamps 2-Bolt Clamps

Product Number	Hose I.D.	Hose O.D.	
		From	To
214-13	1/2"	60/64"	1-4/64"
214-12	3/4"	1-12/64"	1-20/64"

High Pressure Clamps 4-Bolt Clamps

Product Number	Hose I.D.	Hose O.D.	
		From	To
214-11	1"	1-32/64"	1-44/64"
214-07	1-1/4"	2-4/64"	2-16/64"
214-08	1-1/2"	2-12/64"	2-24/64"
214-00	2"	2-32/64"	2-50/64"
214-15	2-1/2"	3-32/64"	3-60/64"
214-10	3"	3-52/64"	4-4/64"
214-02	4"	4-40/64"	5"

High Pressure Female Spud Couplings C/W Clamps

Product Number	Size
215-10	1/2"
215-06	3/4"
215-11	1"
215-12	1-1/4"
215-13	1-1/2"
215-14	2"
215-15	3"
215-16	4"

High Pressure Female Stem

Product Number	Size
215-20	1/2"
215-21	3/4"
215-01	1"
215-02	1-1/4"
215-03	1-1/2"
215-04	2"
215-08	3"
215-00	4"



Fluid & Air Transfer - High Pressure

High Pressure Clamp Fittings



High Pressure Male Stem

Product Number	Size
215-22	1/2"
215-23	3/4"
215-24	1"
215-25	1-1/4"
215-26	1-1/2"
215-05	2"
215-09	3"
215-27	4"



High Pressure Double Spuds

Product Number	Size
217-15	1/2"
217-16	3/4"
217-17	1"
217-18	1-1/4"
217-19	1-1/2"
217-04	2"
217-14	3"



High Pressure Female Spud - Wing Nut Thread X NPT

Product Number	Size
217-20	1/2"
217-21	3/4"
217-07	1"
217-06	1-1/4"
217-00	1-1/2"
217-02	2"
217-08	3"
217-03	4"



High Pressure Male Spud

Product Number	Size
217-22	1/2"
217-23	3/4"
217-24	1"
217-25	1-1/4"
217-10	1-1/2"
217-01	2"
217-09	3"
217-26	4"



High Pressure Wing Nut

Product Number	Size
216-04	1/2"
216-05	3/4"
216-00	1"
216-06	1-1/4"
216-01	1-1/2"
216-02	2"
216-07	3"
216-03	4"



Long Shank - Brass



**Machined Brass
NPSM**

**Long Shank
Female Component**

Product Number	Size
211-1F	1"



**Long Shank
Male Component**

Product Number	Size
211-1M	1"



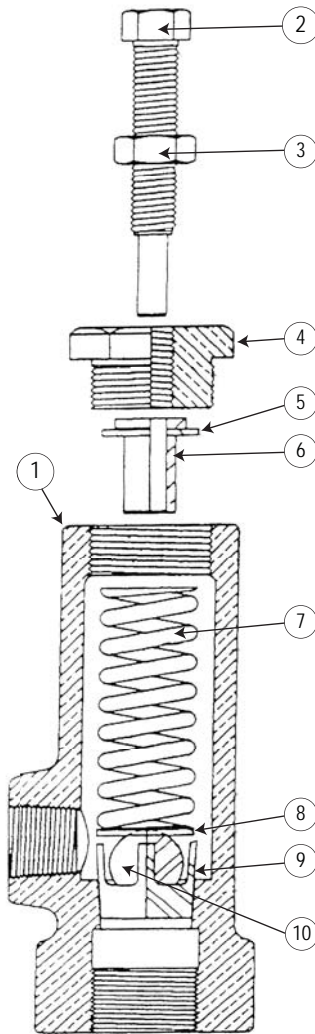
Gruvlok has a broad range of grooved products, plain end product, valving, pipe preparation tools, and various accessories.

Gruvlok couplings for grooved end pipe are available in nominal pipe sizes 1" through 30" and in metric sizes. The variety of coupling designs provides a universal means for the connection of pipe, fittings, and pipe system components. The wide assortment of Gruvlok couplings and gaskets permits selection of the most suitable combination for a specific application, thus providing the most versatile and economical pipe installation.



Fluid & Air Transfer - Relief Valve

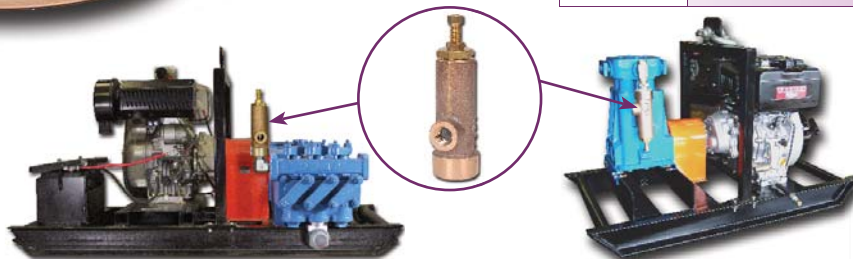
TL Relief Valve



The TLRV TIME Ltd. Relief Valve is manufactured and assembled in Northern Ontario. This compact and robust valve has been tested to a recommended maximum hydrostatic pressure of 1200 PSI.

Dimensions: 8.5" high x 3" wide
 Outlet Port: 3/4"
 Inlet Port: 1"

Item	Description	Part #
	Relief Valve - Complete Assembly	210-01
1	Relief Valve body - Bare Machined	210-02
2	Adjustment screw	210-03
3	Locking nut	210-04
4	Plug	210-05
5	Spring guide washer - top	210-06
6	Spring guide	210-07
7	Compression spring	210-08
8	Spring guide washer - bottom (not shown)	210-06
9	Stainless steel valve seat	210-10
10	15/16" stainless steel ball	1187738



Relief Valve possible uses



Other Valves



1-1/4" Relief/Regulator Valve

- 75 GPM Capacity
- 50-2000 PSI Pressure Range
- Port Size: 1-1/4 Inch NPT
- 3 Ports
- SST Valve Seat

Repair Kit

Includes:

- packing
- o-ring
- set screw
- plunger cup
- valve seat
- valve

Part #	Description
1285315	1-1/4" Relief Valve
5256492	Repair Kit



3/4" 700 PSI Brass Relief Valve

Piston-Type Pressure Relief/Regulating Valve.

Brass, 3/4" Inlet & Pipe Connection, 700 psi max.

Bypasses excess liquid. Adjustable to maintain control of line pressure at any pressure within the valve's operating range. Selected pressure setting firmly held in place by locknut. Extra large valve passages to handle large flows.

Part #
32-681534700



Fluid & Air Transfer - Valves

Mortrol Valve



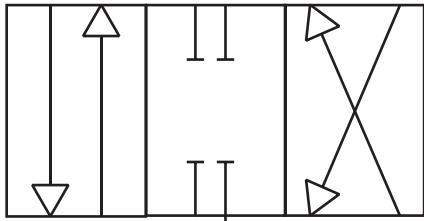
MORTROL VALVE

3 & 4 way – 250 PSI Service

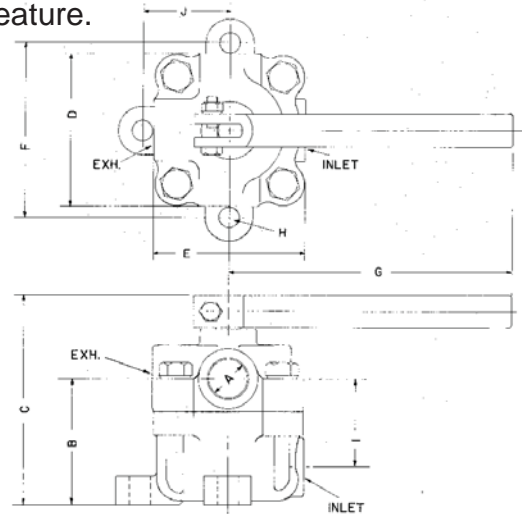
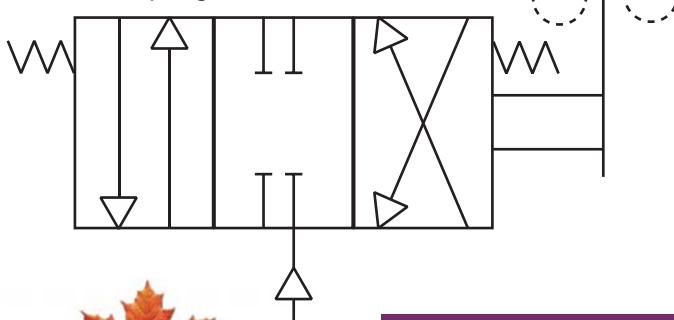
No other operating valves have all of these features:

- Pack-less construction – no valve packing to replace; no maintenance or service costs
- Fast or throttling action as desired
- No air or pressure loss through valve leakage wear-proof disc and seat
- Shielded sealing surfaces
- Line-pressure seals valve at all times
- 85% full pipe area through valve
- Position of handle indicates direction of flow
- Can be converted to a 3-way valve by plugging one hole
- Lockout safety feature.

Flow Diagrams
Standard



With Spring Return



Product Number	Size	Valve Type
300-00	1/2"	Standard
300-01	1/2"	Spring return to normal
302-00	3/4"	Standard
302-01	3/4"	Spring return to normal
304-00	1"	Standard
304-01	1"	Spring return to normal



Pipe Size										Weight in Lbs.
A	B	C	D	E	F	G	H	I	J	
1/2"	2-9/16"	4-1/8"	3-1/8"	3-5/16"	3-3/4"	5-3/4"	7/16"	1-13/16"	1-7/8"	6
3/4"	3-5/16"	5-7/16"	4-1/16"	4-1/8"	4-5/8"	7-1/2"	17/32"	2-5/16"	2-5/16"	11
1"	3-9/16"	5-3/4"	5"	5-1/8"	5-3/8"	8-1/2"	9/16"	2-5/8"	2-11/16"	16



North America 1-800-669-3542

International +1-705-647-8138

PAGE: FA20



www.timeltd.ca

Valves

STAINLESS STEEL BALL VALVES

Features

- Full port / 2-piece body
- NPT ends to ANSI B1.20.1
- Blowout-proof stem
- Adjustable packing nut
- Locking lever handle
- Actuator mounting pad
- Floating ball
- P-T 450° F @ 100 PSI



1000 PSI Product Number	2000 PSI Product Number	Size
46-10-025	46-12-025	1/4"
46-10-038	46-12-038	3/8"
46-10-050	46-12-050	1/2"
46-10-075	46-12-075	3/4"
46-10-100	46-12-100	1"
46-10-125	46-12-125	1-1/4"
46-10-150	46-12-150	1-1/2"
46-10-200	46-12-200	2"
46-10-300	* 46-12-300	3"
46-10-400	* 46-12-400	4"

* NOTE: 46-12-300/400 are rated at 1500 PSI

BRASS BALL VALVES

Features

- Full port / 2-piece body
- Blowout-proof stem
- Adjustable packing gland
- Chrome plated ball
- Class 150 WSP, 600 WOG
- ANSI B1.20.1 NPT
- CRN number available on request
- Markings to MSS-SP25
- CAN / CGA 3, 16, 9.1-M97, CR91-002
- ANSI / ASME Z21.15, 16.33, US REQ 3-88
- CSA Approved
- Locking Handle

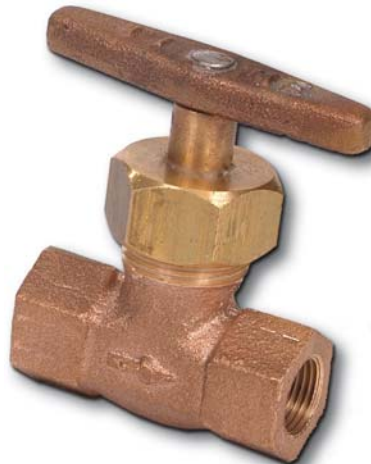


Product Number	Size
46-01-025	1/4"
46-01-038	3/8"
46-01-050	1/2"
46-01-075	3/4"
46-01-100	1"
46-01-125	1-1/4"
46-01-150	1-1/2"
46-01-200	2"
46-01-300	3"
46-01-400	4"

BRASS WATER VALVE

Features:

- Ruggedly built for severe mine service
- Bronze body and extra heavy brass stem
- Teflon valve seat gives longer service
- PTFE Stem Packing
- Female pipe thread - 3/8" NPT



Product Number	Size
206-00	3/8"



Fluid & Air Transfer - TIME Ball Valve

TIME SG Iron Ball Valves



Manufactured for use in a rugged, underground, mine environment.

Key Benefits of TIME's Full Flow Lockable Ball Valve:

- Rugged SG Iron Cast body
- Full Flow valve - prevents turbulent flows / restrictions
- 316 Stainless Steel Ball - minimizes corrosion
- Floating Ball Design - creates a positive seal on the ball seat when valve is closed
- NPT Threads
- Spindle & Thrust washer & nut - made from 316 Stainless Steel to minimize corrosion.
- PTFE Spindle Seals & Ball Seats - perfect for use in an underground environment, designed to not be affected by harsh mediums. They also do not crack, swell or breakdown.
- 90 degree quarter turn Lever Handle
- Sizes range from 1/2" up to 2"

Safety Features:

- Lockable handle in both the on and off positions
- Tamper-proof design
 - The locking portion of the valve is built in to the handle and the body, not an add-on
 - incorporates a spring pin in the nut of the handle to prevent removal.

Product Number	Size
MVLH-1/2PF	Valve 1/2" Female NPT
MVLH-1PF-1PF	Valve 1" Female NPT
MVLH-1-1/2PF	Valve 1-1/2" Female NPT
MVLH-2PF	Valve 2" Female NPT
MVLH-2VC-1PF	Valve 2" Grooved to 1" Female NPT (Header Valve)



TIME SG Iron Ball Valves

3rd Party Testing results:

Hydrostatic Pressure Test of Ball Valves
for TIME Limited

Page 2 of 3
Report No. 13-06-C0161

EXOVA

1.0 INTRODUCTION

This report contains the results from the hydrostatic pressure test on two (2) ball valves for TIME Limited.

The received test samples were assigned with Exova's sample numbers and cross referenced to TIME Limited's sample description as listed:

<u>Exova Sample No.</u>	<u>Description</u>
13-06-C0161-1 & 2	1" NPTF Full Flow Ball Valve, Sample # 1 & 2

2.0 TEST EQUIPMENT

- Haskel Hydrostatic Booster 20 kip, S/N 0912-0446
- Pressure Gauge 20,000 psi range, MII # B01161, Ref.
- Pressure Transducer 10,000 psi range, MII # B07476, Calibrated
- National Instrument PCI-6071, DAQ-Labview, MII # B07402, Calibrated

3.0 TEST PROCEDURE

The hydrostatic pressure test was conducted in accordance with the client's instructions as briefly outlined as follows:

- The hydrostatic pressure test was conducted at ambient room condition.
- Each valve was connected to a hydrostatic pressure intensifier then filled with water and freed of entrapped air before the pressure test was conducted.
- The pressure was gradually applied until failure occurred to obtain the burst pressure.
- The test sample was visually inspected for any evidence of leakage or signs of structural deformation during the pressure test and documented any mode of failures.

4.0 RESULTS

The hydrostatic pressure test results of two 1" NPTF Full Flow Ball Valves are summarized in Table 1 below. Photographs of test set-up and failure modes are presented in Appendix A, Figures 1A to 3A.

Table 1: Hydrostatic Test Results

Sample #	Burst Pressure (psi)	Comments
13-06-C0161-1	6,753	Body fractured.
13-06-C0161-2	6,613	Body fractured.

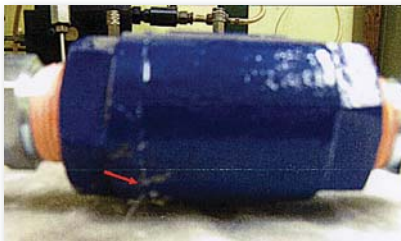


Figure 2A: Failure mode of Sample# 13-06-C0161-1, Body fractured at 6,753 psi.



Figure 3A: Failure mode of Sample# 13-06-C0161-2, Body fractured at 6,613 psi.



Fluid & Air Transfer - Misters

Misters

PROPTEC ROTARY MISTER

The Proptec Rotary Mister consistently produces perfectly sized droplets that travel far down mine drifts and encapsulates airborne dust before falling. It sequesters dust without eroding mine ramps, drifts and travel ways. It reduced water consumption by over 80% to reduce both water and energy for significant cost savings.

The Proptec Rotary Mister was the improved result of early research at Michigan State University. Designed by an experienced engineering team, the Proptec Rotary Mister can be used in a vast range of applications that require reliable, robust atomization of liquids. These atomizers operate with any type of water without clogging. Proptec Rotary Mister effectively controls all types of dust including hazardous & explosive types found in mines. It and performs with high reliability and low maintenance even in extreme conditions.

The Proptec Rotary Mister represents "State of the Art" in dust control technology.

MINE TESTED IN SUDBURY, ON CANADA

The Proptec Rotary Mister has been tested at a mine in Sudbury, Ontario, at locations where dust is a problem — in mine drifts and travel ways, at shotcrete transfer points and hoppers, at a crusher station, at rock dumping sites and in raise bore applications.

Available air powered, electric, or hydraulic.

Features:

- easy to install
- two settings: low, 1 gpm, high, 3 gpm
- maintenance-free
- will not clog

Benefits:

- washes mine air clean of dust
- cools and refreshes mine air with billions of active droplets
- efficiently utilizes water at reduced volumes conserving water & energy
- will not erode ramps or drifts
- can knock down any dust.

FLR (filter, lubricator, regulator) Assembly included in each unit.

Product Number	Description
PT2A-XM100	Proptec Air Rotary Mister Assembly
PT2E-XM200	Proptec Electric Rotary Mister Assembly
PT10AS01HBSB	Proptec Hydraulic Rotary Mister Assembly
47-2016	Portable Proptec Air Rotary Mister



Fluid & Air Transfer - Atomizers

Atomizers

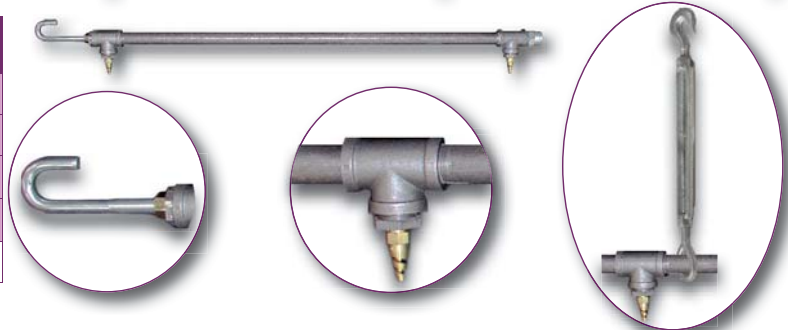


Product Number	Description
VICAT1	1" ATOMIZER ASSEMBLY

Hanging Pipe Atomizer



Product Number	Description
47-1004	8'6" Hanging Pipe Atomizer (3 port)
47-1006	3' Hanging Pipe Atomizer (2 port)
47-1009	12' Hanging Pipe Atomizer (5 port)
47-1031-2	12" Hanging Pipe Atomizer (1 port)
Custom Design Available upon request	



Nozzles



Product Number	Description
TF6W	1/4" Brass #6 Nozzle
TF8W	1/4" Brass #8 Nozzle
Other Nozzles Available upon request	

Fire Nozzles

Class A & B Fire Nozzles

- IPT Thread
- 1" or 1½" Adjustable Fog/Stream/Shut-off
- High impact POLYCARBONATE NOZZLES
- Max rated flow 78 gpm at 100 PSI
- Molded in Red

Product Number	Size	Description
10IPT	1"	For Class A B fires
22-06	1-1/2"	For Class A, B fires



Fluid & Air Transfer - Air Movers

Air Movers

Air Movers, or air horns, are used wherever there is a need to disperse fumes, move air into confined spaces, cool men working in elevated temperature conditions, or cool machinery or products with a blast of directed air. Common applications are found in refineries, chemical plants, utilities and cogeneration units, metal fabrication plants, paper and pulp plants, shipyards, the marine industry, the steel industry and the underground mining industry.

The air movers have been tested at an independent laboratory. The listed free flow ratings are based on tests to AMCA Standard 210. Under identical testing situations, The air movers exceeded all the air flow ratings of competitively manufactured air movers.

Features of the Air Movers

- No moving parts.
- Used for venting hazardous areas.
- Maintenance is minimal.
- Can be used as a blower or exhauster.
- Operates on compressed air or steam.
- Connection for ground wire.
- Tested at an independent laboratory to AMCA Standard 210, equaling or exceeding the air flow of competitively manufactured air movers!



Part No	Description	Inside Dia. of Base	Overall Length	Outside Dia. of Base	Dia. at top of Horn	NPT Size	Bolt Circle Dia.	Base Slot Dia.	Weight
TEX-TX-3AMS	3" Air Mover - Short	3"	16.75"	7.31"	7"	1/2"	6.56"	0.4"	5.5 lbs
TEX-TX-3AM	3" Air Mover	3"	30.5"	7.31"	7"	1/2"	6.56"	0.4"	8.5 lbs
TEX-TX-6AM	6" Air Mover	6"	44.25"	11.25"	12.5"	1"	10.5"	0.4"	22.3 lbs
TEX-TX-8AM	8" Air Mover with Metal Horn	8"	46.06"	14.37"	14.25"	1"	13.62"	0.5"	36 lbs
TEX-TX-10AM	10" Air Mover with Metal Horn	10"	48"	17"	15.75"	1"	15.5"	1"	42.1 lbs

65PJADJ-TNT

Impact Sprinkler

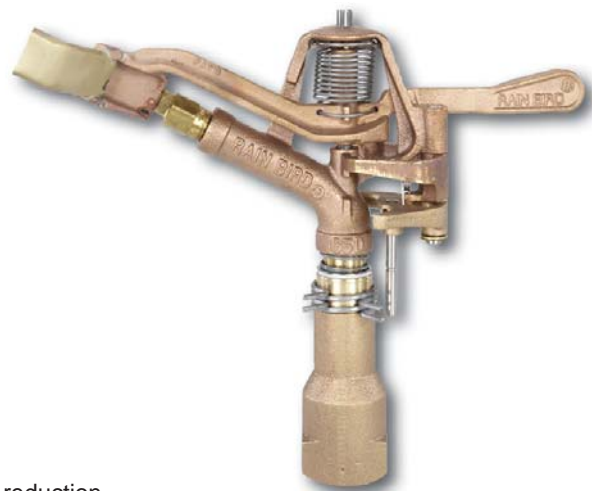
Performance

1" (26/34) Riser-Mounted Impact Head Used for Slope or Large, Non-Turf-Area Applications

- Flexibility – Straight-through flow for superior performance in dirty water
- Reliability – Proven impact drive
- Durability – Rugged brass and stainless steel construction

Features

- Proven impact drive.
- Long-wearing TNT bearing.
- Straight-through flow for superior performance in dirty water.
- Full-circle or adjustable arc 20° to 340°.
- Precision Jet tube (PJ™) minimizes side splash.
- Stainless steel distance control diffuser pin allows up to 25% radius reduction.
- Rugged brass, bronze and stainless steel construction.
- FP trip for full- or part-circle operation.



Product Number	Size	Description
65PJADJTNT	1"	SPRINKLER RAIN BIRD



Fluid & Air Transfer - Header Manifold

TIME Header Manifolds



TIME header manifolds are designed and manufactured in various configurations, to allow air/water control in a number of mining applications. To be used in conjunction with the TIME ball valve.

**** Can be manufactured to custom specifications ****

Product Number	Size
525-06	Header Manifold 2" female NPT one end with 4 X 1" female NPT
525-08	Header Manifold 2" grooved one end with 5 X 1" female NPT
525-09	Header Manifold 2" grooved one end with 3 X 1" female NPT
525-10	Header Manifold 2" grooved both ends with 3 X 1" male NPT
525-11	Header Manifold 2" grooved both ends with 3 X 1" female NPT
525-12	Header Manifold 2" grooved both ends with 4 X 1" male NPT

Potassium Acetate Liquid Deicer

Potassium Acetate represents a significant improvement on liquid de-icing fluids. Potassium Acetate is clear, odorless, and is an easy-handling solution. The unique features and benefits of Potassium Acetate make it an ideal alternative to conventional ice melt applications:

Environmentally Friendly

- non-toxic and non-hazardous to plant and animal life
- non-damaging to most surfaces including concrete, metals, wood, gutters, lawns, and vegetation
- has a very low biological oxygen demand (BOD*) rate and contains no phosphates or urea.

High Performance Liquid Ice Melt

- works longer and better than magnesium chloride, calcium chloride, and traditional rock salts!
- improved wetting and spreading
- fluid sticks to the surface and lasts longer between applications
- rapid drying - making treated surfaces available for use in less time



* The lower the BOD rate, the quicker it decomposes into environmentally safe components. Chloride-based de-icers (calcium and magnesium chloride) accumulate in the environment as harmful salts which can be damaging to plant and animal life - including fish.

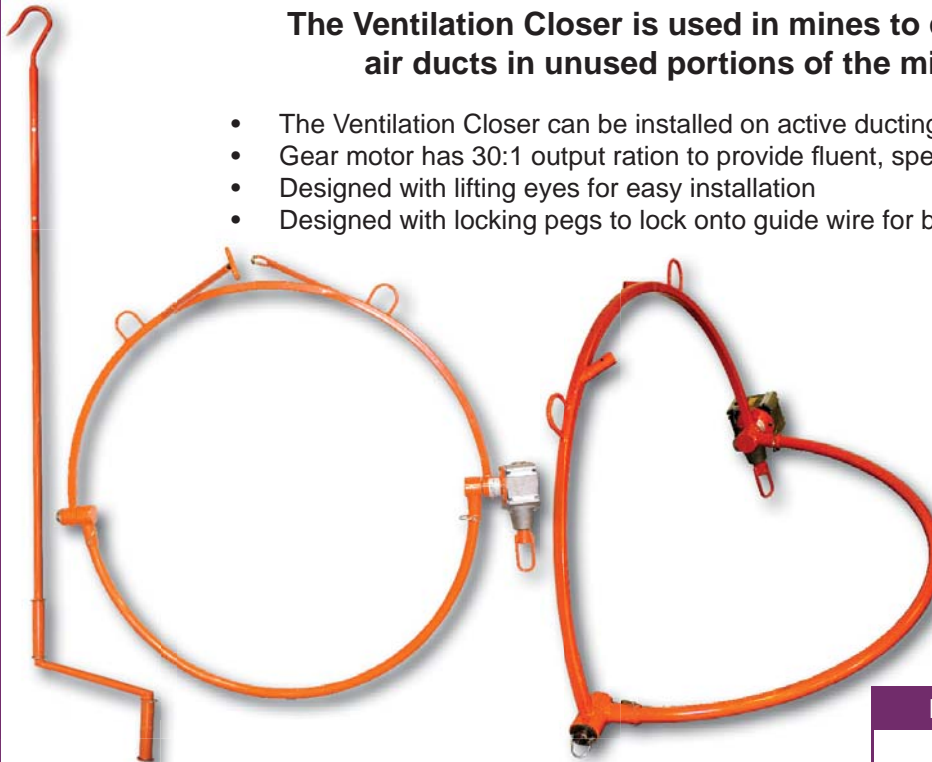


Fluid & Air Transfer

Ventilation Closer

The Ventilation Closer is used in mines to close off air ducts in unused portions of the mine.

- The Ventilation Closer can be installed on active ducting
- Gear motor has 30:1 output ration to provide fluent, speedy opening and closing
- Designed with lifting eyes for easy installation
- Designed with locking pegs to lock onto guide wire for better security



Installed Ventilation Closer



Product Number	Description
47-1015	Ventilation Closer



Blow Tubes

- Available in copper, steel and aluminum
- Available in different lengths and I.D.

Product Number	Size
221-07BT	Blow Tube Copper 1/2" x 12'
221-07BT10C	Blow Tube Copper 1/2" x 10'
221-07BT10S	Blow Tube Steel 1/2" x 10'
221-08BT	Blow Tube Copper 3/4" x 12'
47-1012	Blow Tube Aluminum 1-1/2" x 6'
47-1012X2	Blow Tube Aluminum 2" x 6'
47-1012X3/4	Blow Tube Aluminum 3/4" x 8'



Lubricator is designed for use with rock drill oil or rock drill grease

- Wide throat filler
- Replaceable pipe bushings
- One piece rugged malleable steel
- Weighted sipper
- Straight-through bore design

Product Number	Description
111-00	Lubricator

Lubricator Specifications	
Max Working Pressure	250 psi.
Oil Capacity	1½ pint
Maximum Volume	75-450 cfm
Weight	11.5 lb
Pipe Thread	1¼ inch
Bushing Size	1¼" X 1" and 1¼" X ¾"
Service	Handheld Drills, Small Hoists



Fluid & Air Transfer - Black Iron

Black Iron Pipe Fittings



Bushing, male to female

Product Number	Size	Product Number	Size
BI-110-BA	1/4" to 1/8"	BI-110-KE	1-1/2" to 3/4"
BI-110-CA	3/8" to 1/8"	BI-110-KH	1-1/2" to 1"
BI-110-CB	3/8" to 1/4"	BI-110-KJ	1-1/2" to 1-1/4"
BI-110-DA	1/2" to 1/8"	BI-110-MD	2" to 1/2"
BI-110-DB	1/2" to 1/4"	BI-110-ME	2" to 3/4"
BI-110-DC	1/2" to 3/8"	BI-110-MH	2" to 1"
BI-110-EB	3/4" to 1/4"	BI-110-MJ	2" to 1-1/4"
BI-110-EC	3/4" to 3/8"	BI-110-MK	2" to 1-1/2"
BI-110-ED	3/4" to 1/2"	BI-110-NH	2-1/2" to 1"
BI-110-HB	1/4" to 1"	BI-110-NJ	2-1/2" to 1-1/4"
BI-110-HC	1" to 3/8"	BI-110-NK	2-1/2" to 1-1/2"
BI-110-HD	1" to 1/2"	BI-110-NM	2-1/2" to 2"
BI-110-HE	1" to 3/4"	BI-110-PM	3" to 2"
BI-110-JC	1-1/4" to 3/8"	BI-110-PN	3" to 2-1/2"
BI-110-JD	1-1/4" to 1/2"	BI-110-SM	4" to 2"
BI-110-JE	1-1/4" to 3/4"	BI-110-SN	4" to 2-1/2"
BI-110-JH	1" to 1-1/4"	BI-110-SP	4" to 3"
BI-110-KD	1-1/2" to 1/2"		

Long Nipple

Product Number	Size	Product Number	Size
BI-113-A2	1/8" x 2"	BI-113-E2	3/4" x 2"
BI-113-A3	1/8" x 3"	BI-113-E3	3/4" x 3"
BI-113-A4	1/8" x 4"	BI-113-E4	3/4" x 4"
BI-113-A6	1/8" x 6"	BI-113-E6	3/4" x 6"
BI-113-B1.5	1/4" x 1-1/2"	BI-113-H2	1" x 2"
BI-113-B2	1/4" x 2"	BI-113-H3	1" x 3"
BI-113-B3	1/4" x 3"	BI-113-H4	1" x 4"
BI-113-B4	1/4" x 4"	BI-113-H6	1" x 6"
BI-113-B5	1/4" x 5"	BI-113-J2	1-1/4" x 2"
BI-113-B6	1/4" x 6"	BI-113-J3	1-1/4" x 3"
BI-113-C2	3/8" x 2"	BI-113-K2	1-1/2" x 2"
BI-113-C4	3/8" x 4"	BI-113-K3	1-1/2" x 3"
BI-113-C6	3/8" x 6"	BI-113-K4	1-1/2" x 4"
BI-113-D1.5	1/2" x 1-1/2"	BI-113-K6	1-1/2" x 6"
BI-113-D3	1/2" x 3"	BI-113-M2.5	2" x 2-1/2"
BI-113-D4	1/2" x 4"	BI-113-M3	2" x 3"
BI-113-D6	1/2" x 6"	BI-113-M4	2" x 4"
BI-113-E1.5	3/4" x 1-1/2"	BI-113-M6	2" x 6"

All of our Black Iron fittings are North American Made.
TIME Ltd. will supply the Canadian Registration Numbers (CRN) upon request.



Fluid & Air Transfer - Black Iron

Black Iron Pipe Fittings



Reducing Coupling

Product Number	Size
BI-119-BA	1/4" to 1/8"
BI-119-CA	3/8" to 1/8"
BI-119-DB	1/2" to 1/4"
BI-119-DC	1/4" to 3/8"
BI-119-EA	3/4" to 1/8"
BI-119-EB	3/4" to 1/4"
BI-119-EC	3/4" to 3/8"
BI-119-ED	3/4" to 1/2"
BI-119-HB	1" to 1/4"
BI-119-HC	1" to 3/8"
BI-119-HD	1" to 1/2"
BI-119-HE	1" to 3/4"
BI-119-JH	1-1/4" to 1"
BI-119-KH	1-1/2" to 1"
BI-119-MH	2" to 1"
BI-119-MJ	2" to 1-1/4"
BI-119-MK	2" to 1-1/2"

Tee

Product Number	Size
BI-101-A	1/8"
BI-101-B	1/4"
BI-101-C	3/8"
BI-101-D	1/2"
BI-101-E	3/4"
BI-101-H	1"
BI-101-J	1-1/4"
BI-101-K	1-1/2"
BI-101-M	2"
BI-101-N	2-1/2"
BI-101-P	3"
BI-101-S	4"

Cross

Product Number	Size
BI-102-A	1/8"
BI-102-B	1/4"
BI-102-C	3/8"
BI-102-D	1/2"
BI-102-E	3/4"
BI-102-H	1"
BI-102-J	1-1/4"
BI-102-K	1-1/2"
BI-102-M	2"
BI-102-N	2-1/2"
BI-102-P	3"
BI-102-S	4"



Black Iron Pipe Fittings



Plug

Product Number	Size
BI-109-A	1/8"
BI-109-B	1/4"
BI-109-C	3/8"
BI-109-D	1/2"
BI-109-E	3/4"
BI-109-H	1"
BI-109-J	1-1/4"
BI-109-K	1-1/2"
BI-109-M	2"
BI-109-N	2-1/2"
BI-109-P	3"
BI-109-S	4"

Coupling

Product Number	Size
BI-103-A	1/8"
BI-103-B	1/4"
BI-103-C	3/8"
BI-103-D	1/2"
BI-103-E	3/4"
BI-103-H	1"
BI-103-J	1-1/4"
BI-103-K	1-1/2"
BI-103-M	2"
BI-103-N	2-1/2"
BI-103-P	3"
BI-103-S	4"

Short Nipple

Product Number	Size
BI-112-A	1/8"
BI-112-B	1/4"
BI-112-C	3/8"
BI-112-D	1/2"
BI-112-E	3/4"
BI-112-H	1"
BI-112-J	1-1/4"
BI-112-K	1-1/2"
BI-112-M	2"
BI-112-N	2-1/2"
BI-112-P	3"
BI-112-S	4"



Fluid & Air Transfer - Black Iron

Black Iron Pipe Fittings



45° Elbow

Product Number	Size
BI-105-A	1/8"
BI-105-B	1/4"
BI-105-C	3/8"
BI-105-D	1/2"
BI-105-E	3/4"
BI-105-H	1"
BI-105-J	1-1/4"
BI-105-K	1-1/2"
BI-105-M	2"
BI-105-N	2-1/2"
BI-105-P	3"
BI-105-S	4"

Union

Product Number	Size
BI-104-A	1/8"
BI-104-B	1/4"
BI-104-C	3/8"
BI-104-D	1/2"
BI-104-E	3/4"
BI-104-H	1"
BI-104-J	1-1/4"
BI-104-K	1-1/2"
BI-104-M	2"
BI-104-N	2-1/2"
BI-104-P	3"
BI-104-S	4"

45° Street Elbow

Product Number	Size
BI-124-A	1/8"
BI-124-B	1/4"
BI-124-C	3/8"
BI-124-D	1/2"
BI-124-E	3/4"
BI-124-H	1"
BI-124-J	1-1/4"
BI-124-K	1-1/2"
BI-124-M	2"
BI-124-N	2-1/2"
BI-124-P	3"
BI-124-S	4"



Fluid & Air Transfer - Black Iron

Black Iron Pipe Fittings



Cap

Product Number	Size
BI-108-A	1/8"
BI-108-B	1/4"
BI-108-C	3/8"
BI-108-D	1/2"
BI-108-E	3/4"
BI-108-H	1"
BI-108-J	1-1/4"
BI-108-K	1-1/2"
BI-108-M	2"
BI-108-N	2-1/2"
BI-108-P	3"
BI-108-S	4"

90° Elbow

Product Number	Size
BI-100-A	1/8"
BI-100-B	1/4"
BI-100-C	3/8"
BI-100-D	1/2"
BI-100-E	3/4"
BI-100-H	1"
BI-100-J	1-1/4"
BI-100-K	1-1/2"
BI-100-M	2"
BI-100-N	2-1/2"
BI-100-P	3"
BI-100-S	4"

90° Street Elbow

Product Number	Size
BI-116-A	1/8"
BI-116-B	1/4"
BI-116-C	3/8"
BI-116-D	1/2"
BI-116-E	3/4"
BI-116-H	1"
BI-116-J	1-1/4"
BI-116-K	1-1/2"
BI-116-M	2"
BI-116-N	2-1/2"
BI-116-P	3"
BI-116-S	4"



Fluid & Air Transfer - Hydraulics

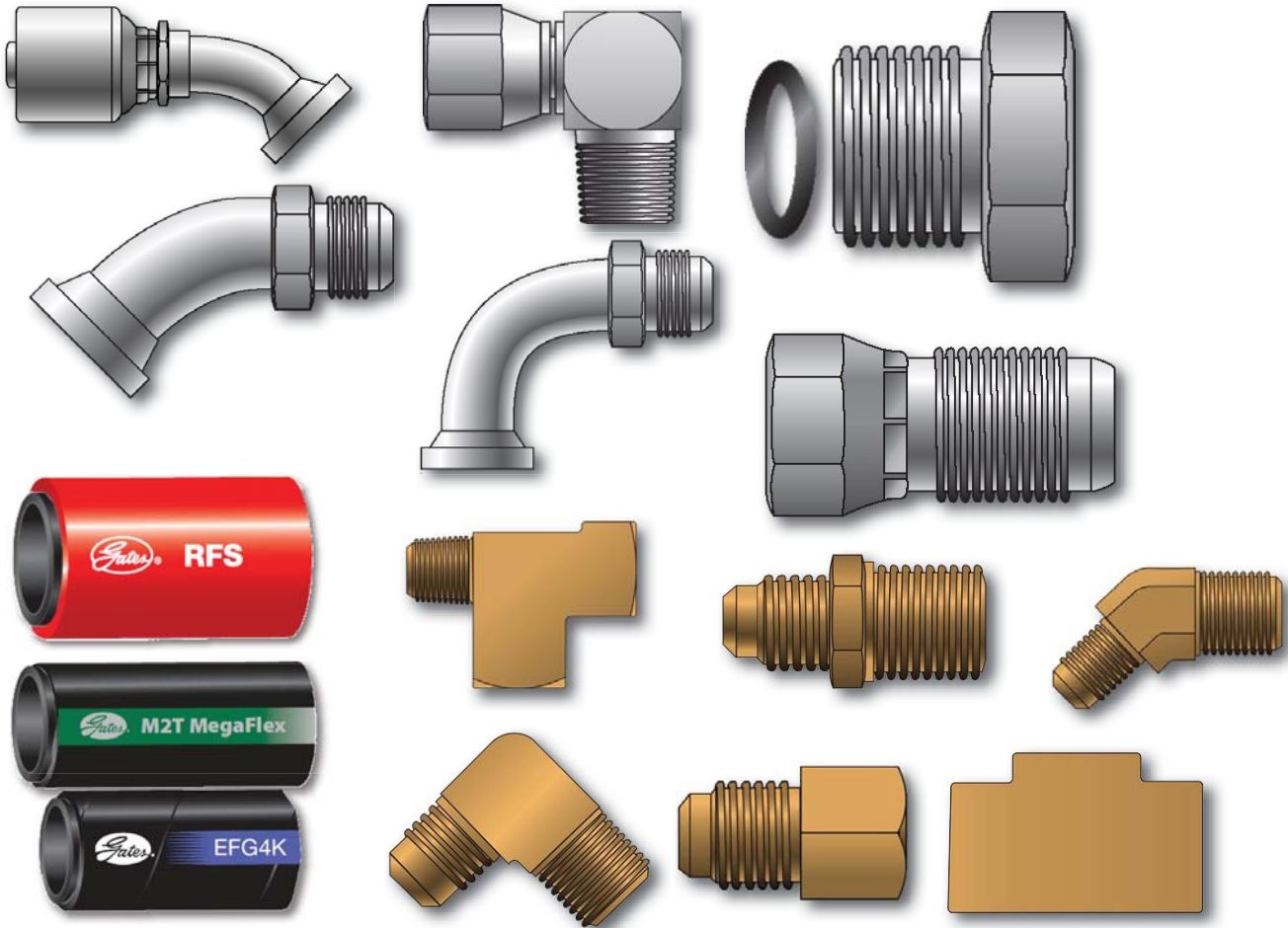
Hydraulics



HOSE, COUPLINGS + EQUIPMENT

TIME Limited is a full line distributor of hydraulic couplings and hose for Gates Hydraulics.

Please call us for product information or visit the Gates website at www.gates.com.



North America 1-800-669-3542

International +1-705-647-8138

PAGE: FA34



www.timeltd.ca

Fluid & Air Transfer - Pneumatics

Pneumatics

TIME Limited is a distributor of a complete range of pneumatic components.

Please call us for product information or visit the website below to view the extensive line of pneumatic products.



Norgren packs 85 years of experience into quality solutions that will help you lower operational costs, reduce warranty expenses, create efficient systems and increase uptime.

<http://www.norgren.com/usa>



NUMATICS®

Numatics Incorporated is a leading manufacturer of pneumatics and motion control products. <http://www.numatics.com/>



Spotton Corp. is an integrated design and manufacturing company specializing in the development, production and servicing of hydraulic, pneumatic cylinders and pneumatic valves using the quality materials and state-of-the-art manufacturing.



TIME Products

MINING

HOSE & HOSE FITTINGS

Chicago Couplings
Hose - air, water & hydraulic
Minsup Fittings
Hansen Couplings
Punch-Lok Clamps
TIME Hose Fittings
Whipchek Hose Anchors



LIGHTING

Dual beam & alignment lasers
Airturbo Lamp
LED Mine Strobe Light (MSHA)
Cordless Miner's Cap Lamp
Tunnel Lamp
LED Flood Lights



MINING PLUGS

Anchor Bolts
Displacement Plugs
Margo Plugs
Drill Hole Plugs
Stemming Plugs
Van Ruth Plugs
VK Grout Plugs



BARRIER PROTECTION

Marcel Gate
Barrier Protection
Complete Remote Systems



DRILLING

PERCUSSIVE TOOLS

Tapered Equipment
Drifting & Tunneling
Bench & Long Hole
Shanks



DIAMOND DRILL TOOLS, FLUIDS & POLYMERS

Core Barrels
Water Equipment
Wedging Tools
Recovery Tools
Hoisting Equipment
Bestolife Lubricants
Ambex Anchoring Capsules
Drilling Fluids
Linseed Soap
Rod Grease
Citrus Degreaser



BLAST HOLE PRODUCTS

PVC & Polyethylene Pipe
Anti-Static Loading Hose
Loading Bags
Depth Gauges
Drill Hole Marker Plugs
Hi-Vis Drill Hole Marker Plugs
Birdie Plugs
Powder Plugs
Blasting Wire
CAB Wire Hangers



VALVES

Brass Ball Valves
Brass Water Valves
Butterfly Valves
Gate Valves
Mine Header Valves
Mortrol Valves
Relief Valves




www.time ltd.ca

INDUSTRIAL

PUMPS & PARTS

FMC (Bean) Pumps & parts
FMC (Bean) Pump Assemblies
Prattisoli KF Series pumps
NOMAD Diaphragm Pumps



ENVIRONMENT - HEALTH - SAFETY

CSA approved Miner's Boots
Safety Glasses, Goggles, Visors
Hand, Head & Hearing Protection
Harnesses & Lanyards
Sorbent Mats, Rolls, Socks, Booms & Pillows
Spill Kits



JOB SITE STORAGE EQUIPMENT

Tough and ultra-secure:
Storage chests & cabinets
Work benches
Field stations



MINING SUPPLIES

Atomizer Bars - 3' and 12'
Black Iron Fittings & Nipples
COXREEL Safety Reels
Hand Tools
Mine Hooks - H & S
Mining Header Manifolds
Muck Scoops
Proptec Rotary Mister
RIDGID Pipe Wrenches
RIDGID Threading Machines
Strapping - CARISTRAP, STRAPRITE



HOISTING & LIFTING

Chain
Loadbinders
Poly Rope
Shackles & hooks
Sheave Blocks - 6" & 8"
Wire Rope



[f](#) [t](#) [in](#)

TIME

8AM - 5PM EST TELÉPHONE DE 8h À 17h (HNE) 705-647-8138

[Manufacturing & Fabrication](#)
[Resources](#)
[Services](#)
[Demander une soumission](#)
[Catalogue de produits](#)

[Mining](#)
[Exploration](#)
[Industrial](#)
[Customization](#)
[Distribution](#)
[Manufacturing](#)
[Innovations](#)

Brand New Website
Tout Nouveau Site Web

www.time ltd.ca

rev 04292016en



North America 1-800-669-3542
International +1-705-647-8138

PAGE: FA36



www.time ltd.ca