



Industrial - Boots

ID - Industrial



North America 1-800-669-3542

International +1-705-647-8138

PAGE: ID2



www.timeltd.ca

PAINT

Features:

- Sprays in upright position
- Low odour
- Non-clogging
- Fast drying



Product Number	Description
3141LF	Marking Paint Yellow
3244A	Marking Paint Red
3247	Marking Paint White
3145FL	Marking Paint Green
3143LF	Marking Paint Orange
3246	Marking Paint Black
3144SL	Marking Paint Florescent Orange
6242	Marking Paint Dark Blue

STRAPPING - Carristrap, Strapright, Poly Rope and Twine

- **Multiple Uses** - Bundling, bailing, securing loads, anchoring, etc. Polywoven strapping can be used to replace steel and wire strapping in many applications.
- **Safe** - to vehicles, machinery and/or product. Safe to handle. No protective clothing necessary; no sharp edges or splinters. No potential hazards involving off-cuts. No danger of injury when cutting strapping under tension.
- **Cost Efficient** - Requires no expensive machinery. Reusable, therefore reducing waste. Machinery repair costs eliminated. Save on labour.
- **Easy Handling** - Light and easy to handle. Easily disposed.
- **Recovery** - Elongation is approximately 8% and has a 90% recovery. Strapping expands and contracts while maintaining its tension on the bundle. If a bundle is dropped, the strapping will not break due to its flexibility.
- **Resistant to** - Ultraviolet rays...Acids...High and low temperatures...Water...Rust—thereby leaving no marks on product.
- **Tensioning** - Hand-held tool and wire buckles produce tensioning. Complete line of strapping tools for different requirements. Tool repair service available



Industrial - Gloves

Ansell



Marigold[®]
Industrial



Our warehouses carry a complete line of high-tech sorbent products for every situation.



Industrial - Fall Protection



Class A



Class P



Class E



Class L



Class D





Industrial - Head Protection



We carry all the top manufacturers in Head Protection.
Face Shields and Glasses, Welding helmets, Mining and
Construction helmets, In- and Over-Ear Hearing protection.



North America 1-800-669-3542

International +1-705-647-8138

PAGE: ID8



www.timeltd.ca

LED Industrial lighting, Air lights, Wobble lights, Safety lights and Mining Cap lights. If you are looking for something else, we will gladly source it for you.



Rexroth

Bosch Group

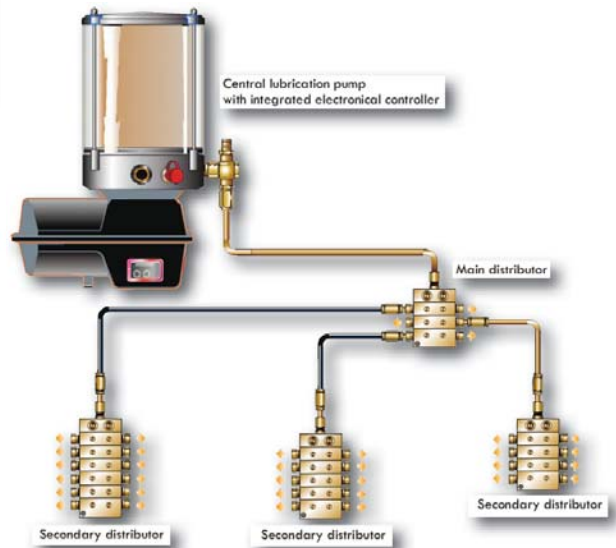
Bosch Rexroth. The Drive & Control Company.

Economical, precise, safe, and energy efficient: drive and control technology from Bosch Rexroth moves machines and systems of any size. The company bundles global application experience in the market segments of Mobile Applications, Machinery Applications and Engineering, and Factory Automation to develop innovative components as well as tailored system solutions and services. Bosch Rexroth offers its customers hydraulics, electric drives and controls, gear technology, and linear motion and assembly technology all from one source.





The BEKA-MAX automatic lubrication system product range has been developed for the mobile and heavy equipment markets.



BEKA-Lube Shuttle Grease Guns



Fill Pump

- Reusable / Refillable grease cartridges - this means no messy cartridges to dispose of.
- In shop refill station with Fill Pump.
- Designed to allow complete use of grease without leaking onto equipment, tools, or clothing.



Refillable Grease Cartridges



Pistol Grip Grease Gun



Side-lever Grease Gun



Pneumatic Grease Gun



Battery Operated Grease Gun



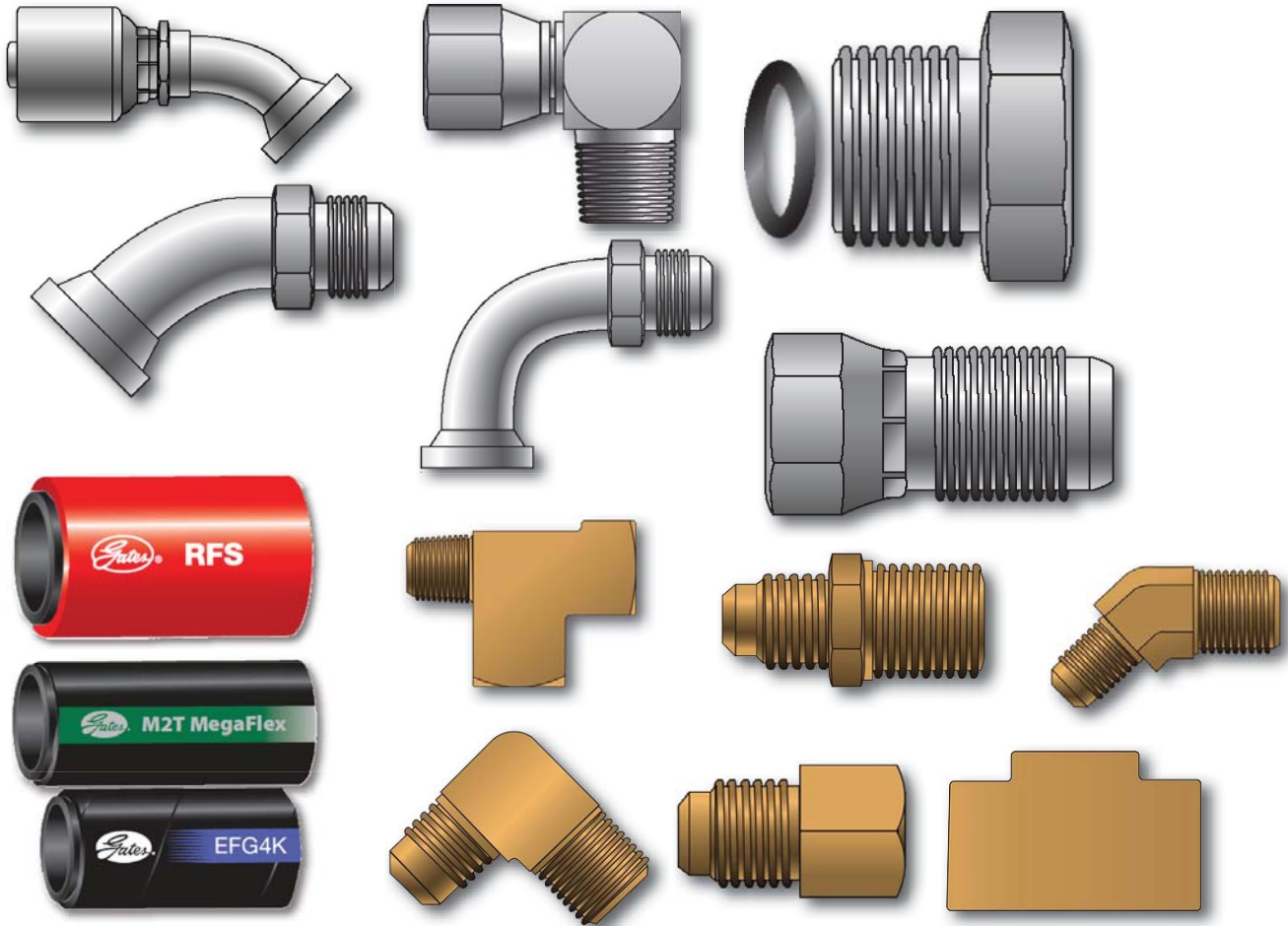
Industrial - Gates Hydraulics



HOSE, COUPLINGS + EQUIPMENT

TIME Limited is a full line distributor of hydraulic couplings and hose for Gates Hydraulics.

Please call us for product information or visit the Gates website at www.gates.com.



North America 1-800-669-3542

International +1-705-647-8138

PAGE: ID12



www.timeltd.ca

TIME Limited is a distributor of a complete range of pneumatic components.

Please call us for product information or visit the website below to view the extensive line of pneumatic products.



Norgren packs 85 years of experience into quality solutions that will help you lower operational costs, reduce warranty expenses, create efficient systems and increase uptime.

<http://www.norgren.com/usa>



NUMATICS®

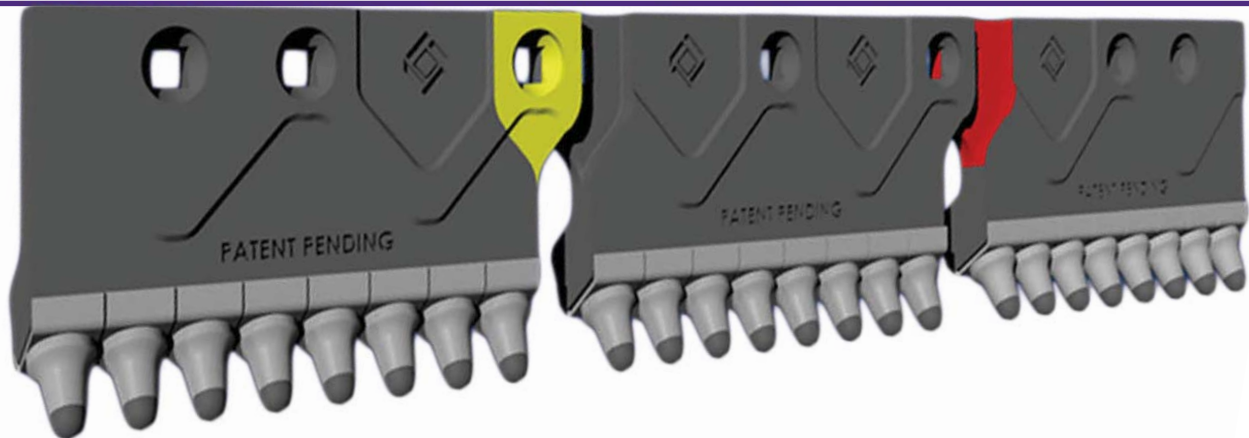
Numatics Incorporated is a leading manufacturer of pneumatics and motion control products. <http://www.numatics.com/>



Spoton Corp. is an integrated design and manufacturing company specializing in the development, production and servicing of hydraulic, pneumatic cylinders and pneumatic valves using the quality materials and state-of-the-art manufacturing.



Industrial - YESS Roadway Maintenance System



A revolutionary sectioned based grading system to improve safety, reduce downtime and reduce wear. Better productivity, reduced operating costs.

The YESS™ System's 1 ft continuously overlapping panels improve handling, safety and reduce downtime. Changing grader boards is now a 1-man operation.

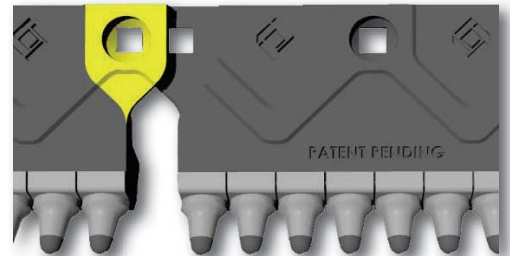
Designed for gravel roads, oil treated roads, ice and snow removal and asphalt planing.

1. **SAFETY & HANDLING:** YESS™ System boards weigh approx. 40 lbs as compared to 120 lbs for a conventional 3 ft section.

Benefits:

- Changing boards is now a 1-man operation.
- Operator can carry replacement in cab.
- Easy fix for local board damage.

2. **SYSTEM STRENGTH:** Continuous overlapping eliminates weakness caused by unsupported joints.



3. **REDUCED WEAR:** The YESS™ System's shield retainer clip protects the front face and heel of the tool carrier. Additionally, the YESS™ System utilizes a harder material with improved wear properties.



4. **DEAD BEDDING:** New design creates dead bedding of material.

5. **EASY ONE-STEP INSTALLATION:** The shield retainer clip compresses the tool's spring clip until installation and improves tool retention on uneven roads.

6. **CAST IRON** - Stronger than steel and wears better than steel



RIDGID®

Why do so many professionals choose RIDGID® tools? The answer is simple...trust. Millions of RIDGID tools go to work every day in plants, on construction sites and in countless other harsh environments.

These tools operate in extremes of heat and cold, withstand dirt and mud, and perform reliably day in and day out. RIDGID tools are known the world over as industry-leading products that allow professionals like you to complete jobs more quickly and reliably.



Industrial - Professional Grade





Industrial - Economy Grade

TOOLWAY
INDUSTRIES LTD.



Industrial - Hoses



Industrial - Hose Fittings

Our warehouses are stocked with most sizes and varieties of hose fittings.



Industrial - Storage Solutions

KNAACK®

weather guard®



HEAVY DUTY DESIGN

Built KNAACK® Tough for security against theft and weather with heavy duty steel construction and anti-theft design.

STANDARD FEATURES

FOUR WAY SKIDS

- Forklifts can gain access from all sides, making it easier to move the boxes around the jobsite and in the warehouse.
- Pre-drilled for adaptation to wheel casters to improve mobility and access. (Wheel casters sold separately)

RECESSED HANDLES

- Heavy duty recessed pivoting handles allow for easy transporting from either side of all KNAACK® boxes.

TRUCK TOOL BOXES SHOULD LAST

Designed and built utilizing the latest technologies and toughest materials to provide the most complete selection of high-quality storage equipment available.

Rolling up with WEATHER GUARD® Professional Truck Boxes in your vehicle commands instant respect. You're a serious professional and you want the world to know it. Fortunately, we offer many ways for you to express your credibility. Your choices will depend on how you work and how much free space you need in your truck bed. WEATHER GUARD® Professional Truck Boxes cover all the bases, from the classic, rugged Saddle Box to the Cross Box, Pork Chop Box and space-saving Lo-Side and Hi-Side Boxes, WEATHER GUARD® Professional Truck Equipment means business.





Letter from the President

TIME is committed to total customer service. We strive to keep this promise in many ways.

Total service means manufacturing to industry standards. TIME Manufacturing and Fabrication Division produces quality products, such as drill wedges, safety and grout plugs, pump assemblies, rod wrenches and custom tooling and equipment.

Total service means manufacturing to your specifications. Our shop personnel have long experience at custom machining and design engineering for the mining and drilling industry.

Total service means sourcing for the products you need at prices that are competitive and fair. We distribute only the best names in the industry such as FMC, Ridgid Tools, Gray Tools, Bestolife, Ambex, Gates Hydraulics, among others.

Total service means listening to our customers and working with them to develop new solutions, products, and innovations to make their jobs safer and more cost effective.

Our commitment to customers has resulted in innovations, new products and important changes. In recent years we have worked with our customers to develop an underground compressed air conservation system, an underground long-hole production drill, a hydraulic rod wrench, a biodegradable rod grease, and an improved camp heater to meet industry standards.

Our people are committed to help find solutions to your problems. We would be pleased to discuss how we can help you raise your production and save money.

TIME's capabilities are limited only by our customers' requirements.

*Peter R. Henderson
President*



North America 1-800-669-3542

International +1-705-647-8138

PAGE ID23

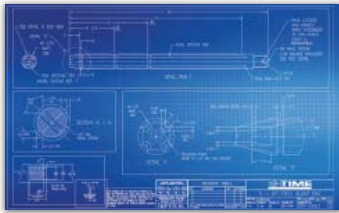


www.time ltd.ca

Manufacturing and Fabrication

Design and Innovation

The TIME team takes pride in providing customers with quality products and the absolute best service with a personal touch.



Not only does TIME distribute a number of quality product lines, we also manufacture a number of our own core products. In conjunction with our fabrication and machining capabilities, we have a team that has well over 250 years of experience in the mining, diamond drilling, and various industrial sectors. With the technical knowhow, we offer design capabilities specifically focused on new product development, innovative design, and problem solving.

We can manufacture to your requirements, or provide complete design and drafting expertise in-house.

RESPONDING TO CUSTOMER NEEDS

Our mandate is to exceed our customer's expectations.
Peter R. Henderson, President

MACHINING

TIME Limited's machining shop uses a combination of heavy duty, big and small bore lathes, CNC milling machines, CNC lathes and conventional lathes.



Here are some of our featured equipment and capabilities:



Hurco TM-18 Heavy Duty Lathe
a. Bar Capacity: 6.4 inch bar capacity
b. Turning Diameter: 25 inch max
c. Turning Length: 39.4 inch max
d. Travel: 17x, 40z inch
e. Quick Change air collect chuck system



Nakamura-Tome WT300MMYS
a. 9-axis, 2 turret multitasking machining
b. Bar Capacity: 65mm (I) and 102mm (r)
c. Turning diameter: 270mm max turning
d. Turning length: 780mm max
e. Quick Change air collect chuck system
f. Chip Blaster GV2-40 high pressure coolant system



Hurco VMX50 Milling Machine
a. 3-axis milling machine
b. Travel: 50 x 26 x 24 inch
c. Table Size: 59 x 26 inch
d. Tool Capacity: 30 CAT 50
e. Magnetic Material Holder

Other Machines include:
CNC lathes such as ROMI M27 heavy duty big bore lathe and ROMI M20 small bore lathe, as well as a host of conventional lathes.

CNC milling machines such as MAZAK Fadal VMX4020FX mill, and FIRST LC-185v-B milling machine, as well as a host of conventional milling machines



Our Newest Toys!



TIME OFFICES

We supply mine-grade products, manufacture quality products, offer design, fabrication and custom machining, as well as sourcing. We are your one-stop shop for industrial needs.

Head Office

Haileybury Tel: 705-647-8138 Fax: 705-647-9800
Sudbury Tel: 705-524-8903 Fax: 705-524-9140

Val d'Or

Tel: 819-874-8138 Fax: 819-874-8139

Timmins

Tel: 705-268-8128 Fax: 705-268-5122

info@timeltd.ca www.timeltd.ca

FABRICATION

TIME Limited's welding and fabrication shop has full capabilities for custom work. Our shop includes a large plasma table, capable of cutting material up to 8' X 20', 2 10,000 lbs SMH Overhead Cranes, an AKBEND ASM-S 17 roller and a brand new, iBend CNC Hydraulic Press Brake.



Our welding shop is certified by the Canadian Welding Bureau annually.



www.timeltd.ca



Serving the Mining Industry Since 1971

Manufacturing and Fabrication



Our brand new, State of the art, 40,000 Sq. ft. Manufacturing, Fabrication and Warehousing facility

705-647-8138

www.timeltd.ca

STOCKING WAREHOUSE



TIME Limited's philosophy is to stock what our customers need. If we don't have it, and you need it on a regular basis, just ask and we will do our best to add it to our ever-growing warehouse.

We carry everything from Health and Safety to Hand tools, mining and diamond drilling products, TIME branded hoses and Gates fittings.



TIME Limited also fixes or makes your hydraulic hoses while you wait.



rev 04292016en



North America 1-800-669-3542

International +1-705-647-8138

PAGE: ID24



www.timeltd.ca