



Mining General - Sheave Blocks

Sheave Blocks

TIME QUICK OPENING

Manufactured by TIME, the TLB series of sheave blocks are built for hard service under tough underground mining conditions.

To be used only in **straight pull** applications.

Features:

- Safety hook releases by turning hook or block through 90°. Hook key holds lock together. No loose parts like toggle pins to get lost.
- Wide throat opening to pass square knots or splices in wire rope.
- Wheel is deeply recessed into side frames to prevent rope fouling.
- Blocks are fitted with sealed high load capacity ball bearings. Dust seals next to bearing increase protection.
- Two bottom shroud bolts ensure rigidity of side frames.

6" Sheave Blocks

- Ductile castings, side frames and wheels.

8" Sheave Blocks

- Medium manganese alloy side frames, heat treated for maximum wear.
- Magnetic qualities.
- Requires no lubrication - sealed ball bearings with extra dust shields



Product Number	Sheave Block	Weight in lbs Hook	Maximum Rope Diameter	Capacity
TLB-6H	6"	20	3/8"	6,000 lbs.
TLB-8H	8"	37	5/8"	8,000 lbs.



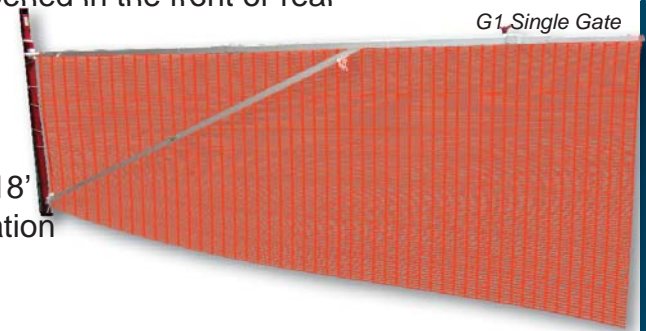
Barriers

Protection Gate

The gate is used to minimize risks of human falls in open pits and is used in dangerous locations that call for remote controlled equipment.

Features:

- Reversible – can be installed left or right and be opened in the front or rear
- Simple installation and use
- Fast installation and removal times
- Can be operated from vehicles
- Adjustable to all types of rock walls and locations
- Telescoping mechanism allows for widths of 12' – 18'
- Available in Single or Double depending on application



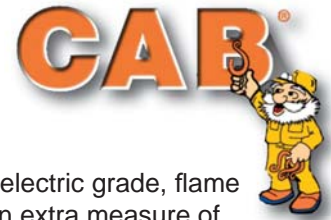
Product No.	Description
BFCT 504 XY	Barrier Fence 4'x50' with Caution Tape
47-OF-01	Barrier Fence 4'x150'
G1/430	Control Valve Kit G1 Gate
G1-000-E	Complete G1 Gate w/ Electronic Fitting Kit
G1-000-EA	Complete G1 Gate without Electric Actuator
G1-000-S	Complete G1 Gate w/ Standard Fitting Kit
G1-001	Complete G1 Gate w/ Air Control Valve
G1-015	Swivel for G1 Gate
G1-016	Swivel Pin for G1 Gate
G1-040	Cylinder Bracket for G1 Gate
G1-045	Hi-Viz Netting w/ Tie Wraps for G1 Gate
G1-050	Cylinder Support for G1 Gate
G1-060	Air Cylinder w/ Fittings for G1 Gate
G1-060E	Air Cylinder w/ Electronic Fittings for G1 Gate
G1-070	Mast for G1 Gate
G1-090	Mast Short Support for G1 Gate
G1-095	Cylinder Support Anchor for G1 Gate
G1-100	Mast Long Support for G1 Gate
G1-150	Swivel Support for G1 Gate
G1-160	Lock Pins for G1 Gate
G1-310	Square Tubing Kit for G1 Gate
G1-750	Complete G1 Gate Double Expandable
G1-800	Infrared Remote Control System for G1 Gate
G1-801	Infrared Handheld Remote Control for G1 Gate
G1-802	Magnetic Base for Handheld Remote G1 Gate
G1-803	Rechargeable Battery Pack Infrared Remote G1 Gate
G1-900	Radio Frequency Receiver Unit for G1 Gate
G1-901	Radio Frequency Handheld Remote for G1 Gate



Mining General - CAB Products

CAB Products

Proudly servicing the Mining Industry for over 40 years, CAB products are widely recognized for their high quality and excellent design. CAB Hangers greatly improve safety and help cut operating costs by supporting and organizing pipe, tubing and all types of cables.



For added safety and protection, all hangers are insulated with a heavy coating of high dielectric grade, flame retardant plastisol in the carrier sector of the hanger. The bright orange colour provides an extra measure of safety and has been a trademark of CAB quality over the years.

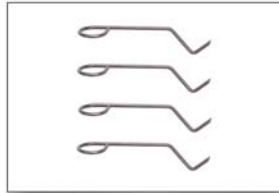
CAB also manufactures a wide variety of high visibility reflective products that greatly improve marking, identification and safety in mines. To provide a complete mine colour code identification system, CAB offers a line of high visibility reflective tubes, streamers and markers in eleven brilliant retroreflective colours.



Blasting Wire Hooks



Bosserman Clips



Brattice Hangers



Cable Clips and Latchbacks



Cable Pullers



Cable Rings



Conveyor Hangers



Heavy Duty J-Hooks



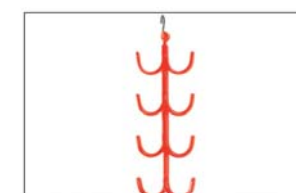
Heavy Duty Round-Stock Hangers



High Visibility Reflectors / Markers



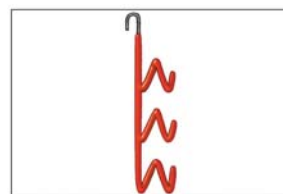
Leaky Feeder Hux Hangers



Longwall Hangers



Rope Hangers



Telewire Hooks



U-Hangers



Vent Tube Hangers



'H' Hooks

H hooks are used to provide support and stability for hose and wiring within drifts, headings, storage areas and workings.

H hooks are installed with a scaling bar, by inserting the bar in the lower square tube. Hose and cables are laid on hook and the entire hook is lifted and hung onto the supported screen or other such support. The design makes ladders unnecessary.



Product Number	Description
H2	2"
H6	6"

'S' Hooks

S Hooks are designed to be hung on pipe to support hose and equipment cable within drifts, headings, storage areas or workings.

Features:

- Made of high strength steel; reduces risk of breakage
- Highly visible
- Easy to install and use
- FR rated dipped

Benefits:

- Improved safety
 - Reduce the risk of accidents
 - Reduce damage to equipment
 - Highly visible
 - Improved housekeeping
 - Frees up ground space in workings by elevating cables, tools, equipment and mine hoses.
- The red thermoplastic coating also provides a good degree of electrical insulation, and abrasion and impact resistance. The coating is resistant to splashing and short term contact of most chemicals.

Part Number	Description
43-FR250	S Hook FR Rated Dipped



Mining General - Bags

Industrial Tool Bags



Industrial Tool Bag Specifications:

Colour	Black and Orange
Content	100% polyvinyl Chloride with polyester scrim
Denier	1000 X 1000
Thread count	18 X 18 Thread inch square
Weight	18oz
Cold Crack	-40°C
Tear strength	90 x 70 lbf.
Mullen Hydro static	300 psi

Part Numbers	Description	Size
171205	Industrial tool bag	16" x 10" x 6"
171206	Industrial tool bag	19" x 11.5" x 7"

Mesh Powder Bag



Powder Bag Specifications:

Colour	Blue Mesh
Weight	9 ounce
Strap	2"

Part Numbers	Description	Size
16167	Blue mesh powder bag	16" x 16" x 7"



RIDGID

RIDGID®

Why do so many professionals choose RIDGID® tools? The answer is simple...trust. Millions of RIDGID tools go to work every day in plants, on construction sites and in countless other harsh environments.

These tools operate in extremes of heat and cold, withstand dirt and mud, and perform reliably day in and day out. RIDGID tools are known the world over as industry-leading products that allow professionals like you to complete jobs more quickly and reliably.



GRUVLOK®

Gruvlok has a broad range of grooved products, plain end product, valving, pipe preparation tools, and various accessories.

Gruvlok couplings for grooved end pipe are available in nominal pipe sizes 1" through 30" and in metric sizes. The variety of coupling designs provides a universal means for the connection of pipe, fittings, and pipe system components. The wide assortment of Gruvlok couplings and gaskets permits selection of the most suitable combination for a specific application, thus providing the most versatile and economical pipe installation.



Mining General

Muck Scoop Assembly

Manufactured by TIME

Features:

- Hardwood handle replaceable
- Safety grip
- Steel blade



Product Number	Description
109-09	Muck Scoop Assembly

Wrenches

Miner's Wrenches

Features:

- Chrome-plated
- Same size as a crescent 12" wrench
- Opens up to the size of a 15" wrench

Speed Wrench

- Double Socket Type / Reinforced Style Speed Wrench

Product Number	Description
103-06	Rs-12-H Miners Wrench
103-00	RS-12 Wrench
36-33-102	Holder Wrench Miners
104-00	7/8" x 11/16" Speed Wrench
104-01	7/8" x 1-1/16" Speed Wrench

Miner's Wrench



Speed Wrench

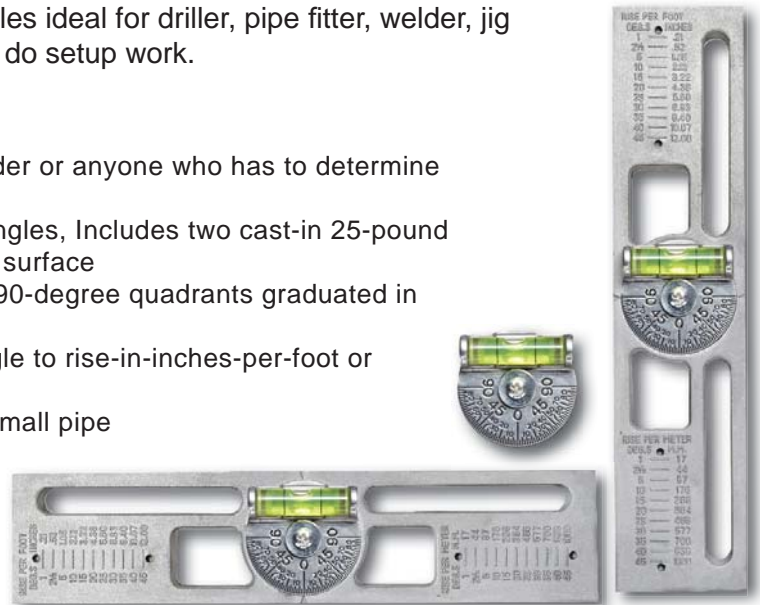
Pro-Mag Level

A lightweight, easy to use tool for determining angles ideal for driller, pipe fitter, welder, jig builder or anyone who has to determine angles or do setup work.

Product Features

- Unit is ideal for driller, pipe fitter, welder, jig builder or anyone who has to determine angles or do setup work
- A lightweight, easy to use tool for determining angles, Includes two cast-in 25-pound pull magnets that hold securely to any magnetic surface
- Unit has a 360-degree adjustable DSL with two 90-degree quadrants graduated in 2-1/2-degree increments
- Cast in are tables used to convert degree-of angle to rise-in-inches-per-foot or millimeters-per-meter
- A groove on the bottom edge permits use on a small pipe

Product Number	Description
36-19-267P	Pro-Mag #8 Level
36-19-268P	#8 Replacement Dial



Mining General - Measuring Tools

Measuring Tools

DUAL BEAM ALIGNMENT LASER

Features:

- 2-eye visible laser beams shoot in opposite directions; align two points from middle
- Extend alignment accuracy by using one beam as a tacking point; halves the actual working distance
- Magnetic base clamps to metal equipment
- Hard anodized means superior abrasion resistance
- Weather sealed with o-rings
- Includes precision "Glow in the Dark" 5 minute of arc level vial; accurate 1/8" at 100 ft.

Accessories available for L202:

- Beam Bender for 90° layouts
- Beam Spreader for plumb and horizontal level line
- Mounting Collar (required with Beam Bender and Spreader)
- Leveling Adapter Plates for tripod mounting
- Support Bracket for pulley alignments



SMARTTOOL DIGITAL LEVEL

Dependable, Accurate, Measures All Angles

- Directional Beep
- Angle Copy
- Alternate Zero
- Glowing Horizontal Vial



Empire Magnetic Protractor

The Empire Level magnetic Polycast protractor has an easy to read dial with adjustable angle pointer. Built in angle pitch calculator in back. Magnetic base and back. Transfer angles to within 1-degree.



SOLA Aluminum Inclinometer

Inclinometer, Magnetic, Degrees and Percentages Scale, 5 Degrees Accuracy, Base Length (In.) 20, Overall Height (In.) 4, Lens Diameter 4-3/4 In., Number of Level Vials 1, Gold Color, 6063 Alloy Aluminum Construction,

Features:

- Finds Any Angle In Degree Or Percent
- Includes Carrying Bag
- Application For Setting Ramps, Pitch Or Slope

Part Number	Description
431-50	Dual Beam Alignment Laser
36-19-265E	Angle Finder c/w magnetic base
36-19-121	4" X 20" SOLA Aluminum Inclinometer
VST92288	23 5/8" (in/ft) SmartTool Level



Mining General - Strap / Rope / Twine

Strap

- **Multiple Uses** - Bundling, bailing, securing loads, anchoring, etc. Polywoven strapping can be used to replace steel and wire strapping in many applications.
- **Safe** - Safe to vehicles, machinery and/or product. Safe to handle. No protective clothing necessary; no sharp edges or splinters. No potential hazards involving off-cuts. No danger of injury when cutting strapping under tension.
- **Cost Efficient** - Requires no expensive machinery. Reusable, therefore reducing waste. Machinery repair costs eliminated. Save on labour.
- **Easy Handling** - Light and easy to handle. Easily disposed.
- **Recovery** - Elongation is approximately 8% and has a 90% recovery. Strapping expands and contracts while maintaining its tension on the bundle. If a bundle is dropped, the strapping will not break due to its flexibility.
- **Resistant to** - Ultraviolet rays...Acids...High and low temperatures... Water...Rust—thereby leaving no marks on product.
- **Tensioning** - Hand-held tool and wire buckles produce tensioning. Complete line of strapping tools for different requirements. Tool repair service available



Strapping			
Product Number	Size	Minimum Break Strength	Foot per Coil
STR-40PBS	½"	660 lbs	1,500'
10650	½"	1,047 lbs	1,500'

Buckles and Tools		
Product Number	Size	Description
10001	½"	C4 Buckle (1000 bx) plain
10310		Heavy duty tensioner for straps up to 1 1/2" (38 mm).

Poly Rope / Twine



Product Number	Size
328-0120	Rope Poly 1/4" X 1300'
328-0160	Rope Poly 3/8" X 600'
328-0180	Rope Poly 1/2" X 335'
328-0200	Rope Poly 3/4" X 125'
47-1101	Twine Orange 9000'
TWINE	Twine Blue 12000'



Mining General - Manifold / Blow Tubes

TIME Header Manifolds



TIME header manifolds are designed and manufactured in various configurations, to allow air/water control in a number of mining applications. To be used in conjunction with the TIME ball valve.

** Can be manufactured to custom specifications **

Product Number	Size
525-06	Header Manifold 2" female NPT one end with 4 X 1" female NPT
525-08	Header Manifold 2" grooved one end with 5 X 1" female NPT
525-09	Header Manifold 2" grooved one end with 3 X 1" female NPT
525-10	Header Manifold 2" grooved both ends with 3 X 1" male NPT
525-11	Header Manifold 2" grooved both ends with 3 X 1" female NPT
525-12	Header Manifold 2" grooved both ends with 4 X 1" male NPT

Blow Tubes



Blow Tubes

- Available in copper, steel and aluminum
- Available in different lengths and I.D.

Product Number	Size
221-07BT	Blow Tube Copper 1/2" x 12'
221-07BT10C	Blow Tube Copper 1/2" x 10'
221-07BT10S	Blow Tube Steel 1/2" x 10'
221-08BT	Blow Tube Copper 3/4" x 12'
47-1012	Blow Tube Aluminum 1-1/2" x 6'
47-1012X2	Blow Tube Aluminum 2" x 6'
47-1012X3/4	Blow Tube Aluminum 3/4" x 8'

Guardian Hardhat Light



The Guardian is the lightest, brightest, toughest light in its class. This light, unlike its competitors, is visible from all sides (omni-directional) and extremely impact resistant. In addition, the Guardian is very lightweight and will not restrict movement. The product comes with a variety of attachments that can be fastened to either the user or to the equipment.

Product Number	Size
47-50002	Guardian Hardhat Light



Mining General

Miner's Light



The Cordless Light produces more than 4000 lux, and continuous lighting time is more than 15 hours.

The Miner's Cap Lamps are the newest design in cap lamps, both cordless and corded. They use a high intensity LED light and a rechargeable battery. The cordless light, particular importance in mine environments, has an innovative safety feature that displays battery life, as well as time and serial number.

- Safe
- Efficient
- Environmentally Friendly
- Portable
- Reliable
- Economical



The Corded Light produces more than 15000 lux, and continuous lighting time is more than 15 hours.



Part Number	Description
47-1200-001	Miner Cap Lamp /Battery
47-1055	Miner Cap Lamp Cordless
DCR-1	Charges 96 cap lamps simultaneously
DCR-2	Charges 48 cap lamps simultaneously

LED Tunnel Light



CSA Approved LED Tunnel Light For Mine safety in stairwells & low ceiling areas

This newly developed LED tunnel light is especially suitable for the mining industry. Its soft, bright, diffuse light is ideal for difficult to light areas such as stairwells and maintenance areas with low ceilings. Its tough housing stands up to rugged mine environments.

Application

- Grizzly Ore Pass
- Loading Pockets
- Mine Drifts
- Galloways

Specifications:

- Size: 231mm x 164mm x 118mm
- Input voltage: AC110-230V or DC24V
- Total initial output lumens; 3000 lumens.
- Beam angle: 160° in runnel direction, 120° in wall direction
- Lifetime: +50,000 hours

Features:

- Illuminates underground passage uniformly—no spotlight effect
- Solid stainless steel housing and bulletproof polycarbonate lens
- Explosion-proof and shock resistant
- Waterproof
- Dust-proof
- Corrosion-proof

Benefits

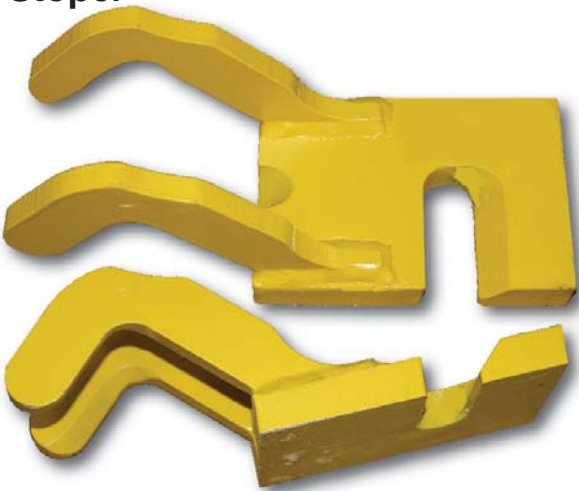
- Consumes minimal power(30W, 0.9 Amps)
- Virtually maintenance free
- Soft light, very good for working
- Easy to mount and maintain
- Longer life span(approximately 5 years)
- Lower maintenance cost
- Minimal heat generated

Part Number	Description
47-DMTAC-30	Tunnel Light 30W/3000L

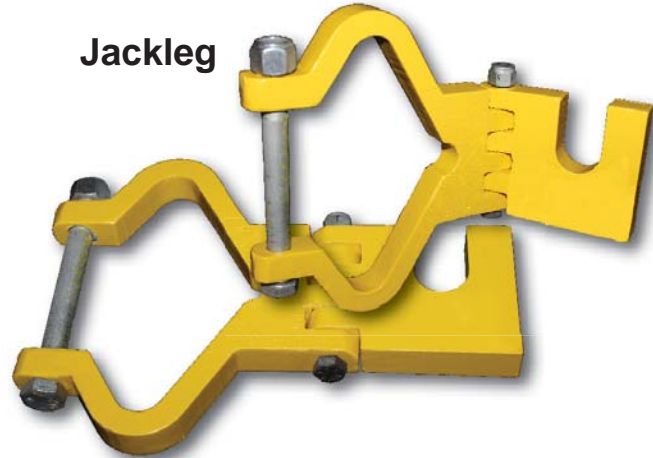


Rebar Pusher

Stoper



Jackleg

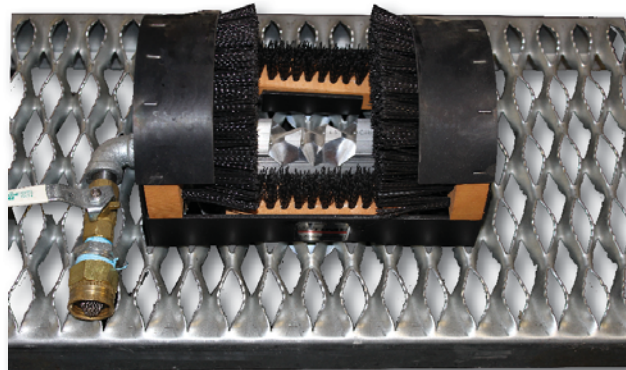


We have two models of a Rebar Pusher. They are used to push rebar into resin.

Part Number	Description
47-0451	Rebar Pusher - Stoper
47-0452	Rebar Pusher - Jackleg

Boot Cleaner

Part Number	Description
44-17ACM1	Boot Cleaner



Wheel Chocks



Front



Side



Part Number	Description
WC-7	7" Rubber Wheel Chock
WCAL-8	8" Aluminum Wheel Chock
WCAL-10	10" Aluminum Wheel Chock



Mining General

Burlap - Bags / Square



Part Number	Description
18X28	Burlap - 18" X 28" 70z Bag
28X40	Burlap - 28" X 40" 100z Bag
10X10	Burlap - 10"X10" 100z Square

Rags



T-Shirt Rags

T-Shirt Rags are perfect for a variety of applications. The rags are cut from recycled, cotton t-shirts.

Part Number	Description
80001999	25 lbs bag T-Shirt Rags Mixed

Marker Paint

Features:

- Sprays in upright position
- Low odour
- Non-clogging
- Fast drying



Product Number	Description
3141LF	Marking Paint Yellow
3244A	Marking Paint Red
3247	Marking Paint White
3145FL	Marking Paint Green
3143LF	Marking Paint Orange
3246	Marking Paint Black
3144SL	Marking Paint Florescent Orange
6242	Marking Paint Dark Blue





Letter from the President

TIME is committed to total customer service. We strive to keep this promise in many ways.

Total service means manufacturing to industry standards. TIME Manufacturing and Fabrication Division produces quality products, such as drill wedges, safety and grout plugs, pump assemblies, rod wrenches and custom tooling and equipment.

Total service means manufacturing to your specifications. Our shop personnel have long experience at custom machining and design engineering for the mining and drilling industry.

Total service means sourcing for the products you need at prices that are competitive and fair. We distribute only the best names in the industry such as FMC, Ridgid Tools, Gray Tools, Bestolife, Ambex, Gates Hydraulics, among others.

Total service means listening to our customers and working with them to develop new solutions, products, and innovations to make their jobs safer and more cost effective.

Our commitment to customers has resulted in innovations, new products and important changes. In recent years we have worked with our customers to develop an underground compressed air conservation system, an underground long-hole production drill, a hydraulic rod wrench, a biodegradable rod grease, and an improved camp heater to meet industry standards.

Our people are committed to help find solutions to your problems. We would be pleased to discuss how we can help you raise your production and save money.

TIME's capabilities are limited only by our customers' requirements.

*Peter R. Henderson
President*



North America 1-800-669-3542

International +1-705-647-8138

PAGE: MG15

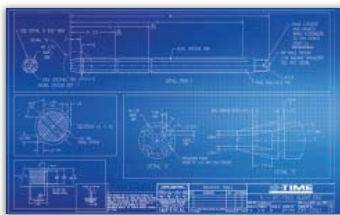


www.time ltd.ca

Manufacturing and Fabrication

Design and Innovation

The TIME team takes pride in providing customers with quality products and the absolute best service with a personal touch.



Not only does TIME distribute a number of quality product lines, we also manufacture a number of our own core products. In conjunction with our fabrication and machining capabilities, we have a team that has well over 250 years of experience in the mining, diamond drilling, and various industrial sectors. With the technical knowhow, we offer design capabilities specifically focused on new product development, innovative design, and problem solving.

We can manufacture to your requirements, or provide complete design and drafting expertise in-house.

RESPONDING TO CUSTOMER NEEDS

Our mandate is to exceed our customer's expectations.
Peter R. Henderson, President

MACHINING

TIME Limited's machining shop uses a combination of heavy duty, big and small bore lathes, CNC milling machines, CNC lathes and conventional lathes.



Here are some of our featured equipment and capabilities:



Hurco TM-18 Heavy Duty Lathe

- a. Bar Capacity: 6.4 inch bar capacity
- b. Turning Diameter: 25 inch max
- c. Turning Length: 39.4 inch max
- d. Travel: 17x, 40z inch
- e. Quick Change air collect chuck system



Nakamura-Tome WT300MMYS

- a. 9-axis, 2 turret multitasking machining
- b. Bar Capacity: 65mm (I) and 102mm (r)
- c. Turning diameter: 270mm max turning
- d. Turning length: 780mm max
- e. Quick Change air collect chuck system
- f. Chip Blaster GV2.40 high pressure coolant system

Other Machines include:
CNC lathes such as ROMI M27 heavy duty big bore lathe and ROMI M20 small bore lathe, as well as a host of conventional lathes.

Hurco VMX50 Milling Machine

- a. 3-axis milling machine
- b. Travel: 50 x 26 x 24 inch
- c. Table Size: 59 x 26 inch
- d. Tool Capacity: 30 CAT 50
- e. Magnetic Material Holder

CNC milling machines such as MAG Fadal VMX4020FX mill, and FIRST LC-185v-B milling machine, as well as a host of conventional milling machines



Our Newest Toys!



TIME OFFICES

We supply mine-grade products, manufacture quality products, offer design, fabrication and custom machining, as well as sourcing. We are your one-stop shop for industrial needs.

Head Office

Haileybury

Tel: 705-647-8138
Fax: 705-647-9800

Sudbury

Tel: 705-524-8903
Fax: 705-524-9140

Val d'Or

Tel: 819-874-8138
Fax: 819-874-8139

Timmins

Tel: 705-268-8128
Fax: 705-268-5122

info@timeltd.ca www.timeltd.ca

FABRICATION

TIME Limited's welding and fabrication shop has full capabilities for custom work. Our shop



includes a large plasma table, capable of cutting material up to 8' X 20', 2 10,000 lbs SMH Overhead Cranes, an AKBEND ASM-S 17 roller and a brand new, iBend CNC Hydraulic Press Brake.



Our welding shop is certified by the Canadian Welding Bureau annually.



www.timeltd.ca



Serving the Mining Industry Since 1971

Manufacturing and Fabrication



Our brand new, State of the art, 40,000 Sq. ft. Manufacturing, Fabrication and Warehousing facility

705-647-8138

www.timeltd.ca

STOCKING WAREHOUSE



TIME Limited's philosophy is to stock what our customers need. If we don't have it, and you need it on a regular basis, just ask and we will do our best to add it to our ever-growing warehouse.

We carry everything from Health and Safety to Hand tools, mining and diamond drilling products, TIME branded hoses and Gates fittings.



TIME Limited also fixes or makes your hydraulic hoses while you wait.



rev 04292016en



North America 1-800-669-3542

International +1-705-647-8138

PAGE: MG16



www.timeltd.ca