

TIME Ltd. carries a wide variety of pumps, from piston and plungers to diaphragm.

TIME Ltd. is a stocking authorized distributor of *FMC Technologies, Pratissoli and NOMAD pumps.*

In-Stock Pumps

TIME Ltd. stocks and reorders the following pumps:

- FMC Technologies: E0413C, L0918BCD and W1122BCD
- Pratissoli: KF Series Model 28, 30, 36, 40
- NOMAD: NTG25, NTG40, NTG50, NTG80

Repair and Rebuild

TIME Ltd. stock parts and kits to rebuild and repair all of our pumps as well as most other pumps out there.

Assemblies

TIME Ltd. has created pump assemblies using diesel motors, air-powered motors and hydraulic motors. The assemblies are used in various applications above ground, below ground and all places in between.

FMC Technologies

Pratissoli

NOMAD
PUMPS • PARTS • PASSION

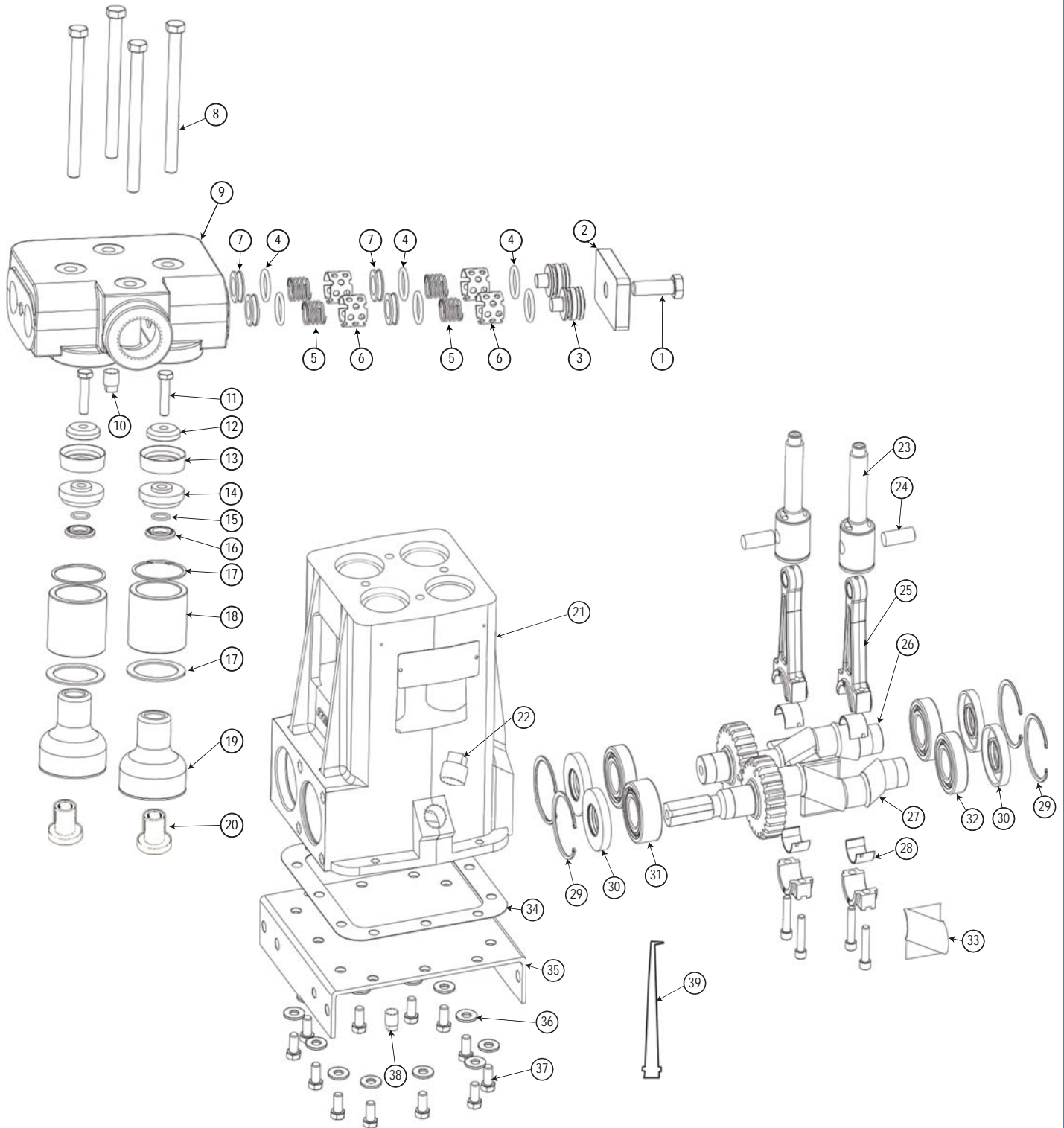
North America 1-800-669-3542

International +1-705-647-8138

PAGE: PU1

PUMPS - FMC water pumps

E0413 Parts Diagram



Performance Table FMC E0413

Pump Model	Piston Diameter (in)	Displacement (GAL/REV)	Max Pressure (PSI)	Pump Capacity (GPM) @ Input Speed (RPM)				
				390 RPM	400 RPM	425RPM	450RPM	575 RPM
E0413	1.625	0.036	600	14.01	14.36	15.26	16.16	20.65



FMC - E0413
PN: 39-160-03



Specifications:

- Standard Suction Size: 1.25" NPT
- Standard Discharge Size: 0.75" NPT
- Pump Weight (Average): 80 lbs

Features:

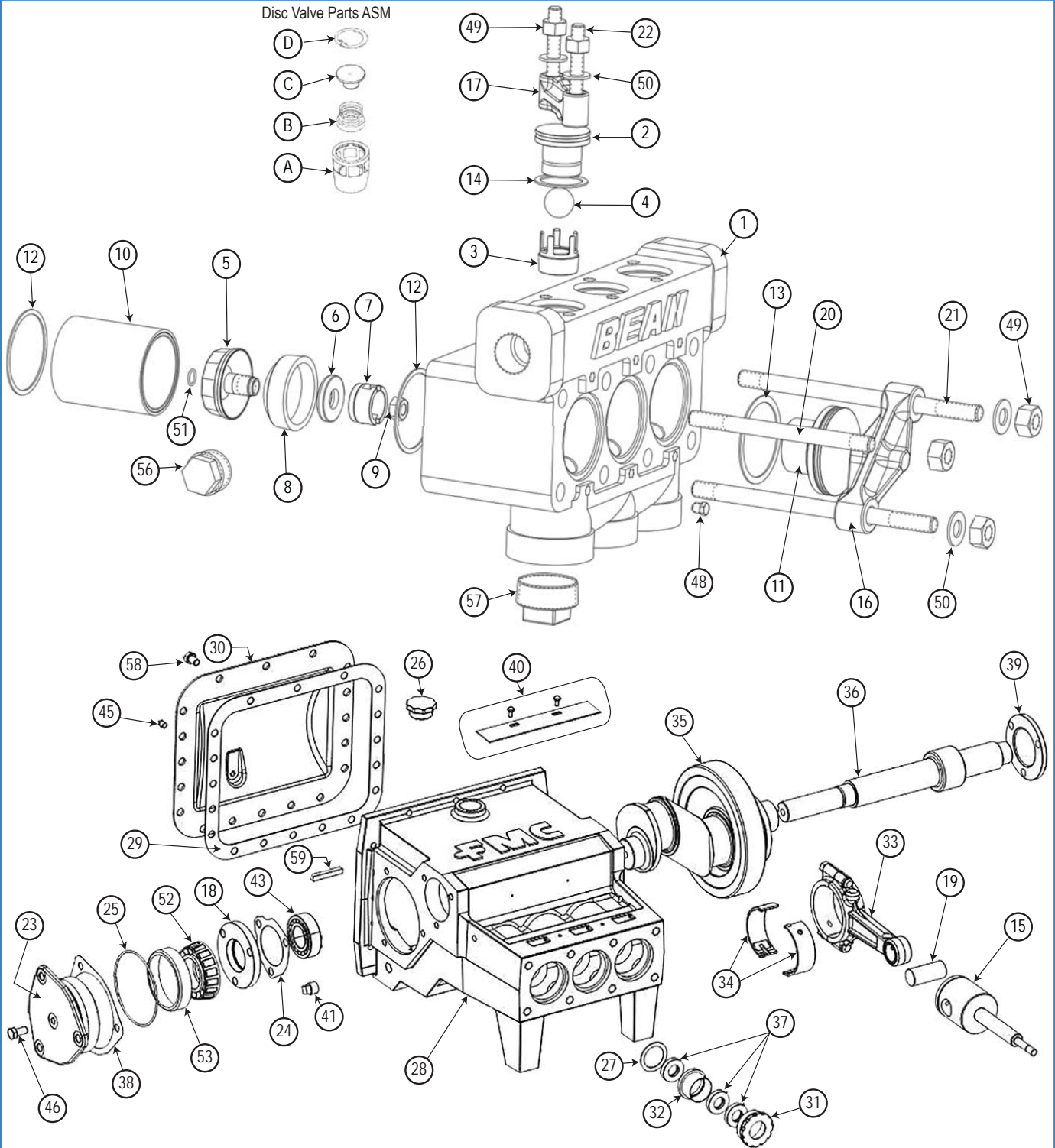
- Fluid end material of ductile iron
- Nitrided crankshaft resists corrosion
- Designed for easy, economical maintenance
- Cast iron pump case
- Special raised seat valves and hardened valve chamber available for abrasives

Item	Part Name	Qty	Part #
1	Hex Cap Screw 1/2"-13 x 1 1/2" (plated steel)	2	39-1100064
2	Clamp, Valve Cover (steel)	2	39-1255887
3	Valve Cover (steel)	4	39-1219614
4	O-ring, 1-3/16" O.D.	12	39-3264075
5	Valve cage (SS)	8	39-1219610
6	Valve Disc & Spring ASM (SS)	8	39-5253499
7	Seat, Valve (SS)	8	39-5260142
8	Cap screw, 3/8"-16 x 5"	4	39-1101262
9	Valve Chamber (cast iron)	1	39-1247208
10	Pipe Plug, 1/4" galv.	1	39-1109987
11	Cap screw, 5/16"-18 x 1 1/2" (SS)	4	39-1284516
12	Packing Washer	4	39-5257986
13	Packing	4	39-5257807
14	Packing holder	4	39-1282557
15	"O" Ring	4	39-1101339
16	Washer, Umbrella	4	39-1269388
17	Gasket Cylinder	8	39-A91684
18	Cylinder, ceramic	4	39-1241364
19	Umbrella	4	39-1279148
20	Sleeve, Crosshead	4	39-1218743
21	Case, Pump (cast iron)	1	39-1273545
22	Plug, oil fill (3/4" pipe)	2	39-1105060
23	Crosshead (cast iron)	4	39-1216823
24	Wrist pin	4	39-1219650
25	Conn. Rod ASM	4	39-P509546
26	Crankshaft ASM, Driven	1	39-P509560
27	Crankshaft ASM, Drive	1	39-P510882
28	Bearing Insert, Conn Rod (pair)	4	39-P510834
29	Snap Ring (N5000-244)	4	39-1118553
30	Seal, Oil	4	39-1101095
31	Bearing (N.D. 5206)	1	39-1104508
32	Bearing (N.D. 1206)	3	39-1104444
33	Oil Slinger	2	39-P500359
34	Gasket, Pump Base	1	39-1273559
35	Mounting Base, Pump	1	39-1280633
36	Wave Lock Washer, 3/8", S'proof	12	39-1177455
37	Cap screw, 3/8" - 16 x 3/4"	12	39-1100008
38	Magnetic Drain Plug, 1/4" pipe	1	39-1101305
39	Valve Seat Remover	1	39-1250638



PUMPS - FMC water pumps

L09-420 Parts Diagram



Performance Table FMC L09-420

Pump Model	Piston Diameter (in)	Displacement (GAL/REV)	Max Pressure (PSI)	Pump Capacity (GPM) @ Input Speed (RPM)				
				350 RPM	625 RPM	700 RPM	750 RPM	890 RPM
L0918	2.750	0.0589	700	11.3	20.2	22.6	24.2	28.7



FMC L09-420
PN: 39-160-00



Specifications:

- Standard Suction Size: 1.50" NPT
- Standard Discharge Size: 1.00" NPT
- Pump Weight (Average): 200 lbs

Features:

- Fluid end material of cast iron
- Pump can be easily repacked
- Ceramic cylinders
- Internal gear reduction in crankcase eliminates need for large sheaves
- Ball valves are available for pumping viscous materials such as drilling muds

Item	Description	Qty	Part #.	Item	Description	Qty	Part #.
1	Valve Chamber	1	39-1255266	31	Packing Nut	3	39-1283600
2	Valve Cover	3	39-A5003	32	Sleeve	3	39-1283601
3	Valve Seat	6	39-1225327	33	Connecting Rod	3	39-18710
4	15/16" SS Ball	6	39-1187738	34	Bearing Eccentric	6	39-P510831
	7/8" SS Ball	6	39-1101418	35	Eccentric Gear ASM	1	39-1279071
5	Packing Cup	3	39-8495	36	Pinion Shaft	1	39-1265098
6	Packing Washer	3	39-1207289	37	Plunger Rod Seal	6	39-1283603
7	Plunger Nut	3	39-A5016	38	Shim	5	39-1252594
8	Packing - Standard	3	39-A3434N	39	Bearing Cap	1	39-1225769
	Packing - Abrasive	3	39-5260052	40	Cover Plate ASM	1	39-1214260
9	Hex Nut ½ - 13 SS	3	39-8309	41	Lube Fitting	3	39-1100759
10	Porcelain Cylinder	3	39-A5034M	42	Set Screw 5/16 - 18 x ½	3	39-1103470
	FMC Ceramic Porcelain Cyl.	3	39-1272060	43	Ball Bearing	2	39-1104444
11	Cylinder Head	3	39-A5002	44*	Seal Holder	3	39-1281655
12	Gasket Cylinder (Copper)	3	39-1280024	45	HHCS 3/8 - 16 x ½	14	39-1106910
	Gasket Cylinder (Fibre)	3	39-1280024F				
13	Gasket Cyl. Head(Copper)	3	39-1280025	46	HHCS 3/8 - 16 x ¾	12	39-1100068
	Gasket Cyl. Head(Fibre)	3	39-1280025F				
14	Gasket Valve Cover(Copper)	3	39-1280026	47	HHCS ½ - 13 x ¾	2	39-1106980
	Gasket Valve Cover(Fibre)	3	39-1280026F				
15	Crosshead & Rod	3	39-1250876	48	Plug, ½	2	39-1187048
16	Clamp Cylinder Head	3	39-1271415	49	Hex Nut ½ - 13	14	39-1121511
17	Clamp Valve Cover	3	39-1271716	50	Lock Washer	3	39-1100243
18	Bearing Cap	1	39-A5005	51	O-ring 5/8 O.D. x 1/16	3	39-1101176
19	Pin	3	39-A5006	52	Cone Bearing	2	39-1101242
20	Stud Cylinder	2	39-A5009	53	Cup Bearing	2	39-1177287
21	Cylinder Cover Stud	6	39-A5011	54*	Bushing, Connecting Rod	3	39-A5046
22	Valve Clamp Stud	6	39-A5012	55*	Bolt, Connecting Rod	6	39-18743
23	Bearing Housing	2	39-1279064	56	Plug 1" Pipe	1	39-1105077
24	Gasket	2	39-A5026	57	Plug 1 - ½ Pipe	2	39-1105105
25	Gasket	2	39-A5025	58	Petcock 1/8 NPT	1	39-1187039
26	Oil Cap	1	39-A5054	59	Key	1	39-1187577
27	Packing Washer L09	3	39-1283602	A**	Seat Valve	1	39-1245786
28	Pump Case	1	39-5260537	B**	Disc & Spring ASM	1	39-1250400
29	Gasket - Cover	1	39-1279065	C**	Valve Seat	1	39-5260958
30	Cover ASM	1	39-1279063	D**	Snap Ring	1	39-1251822

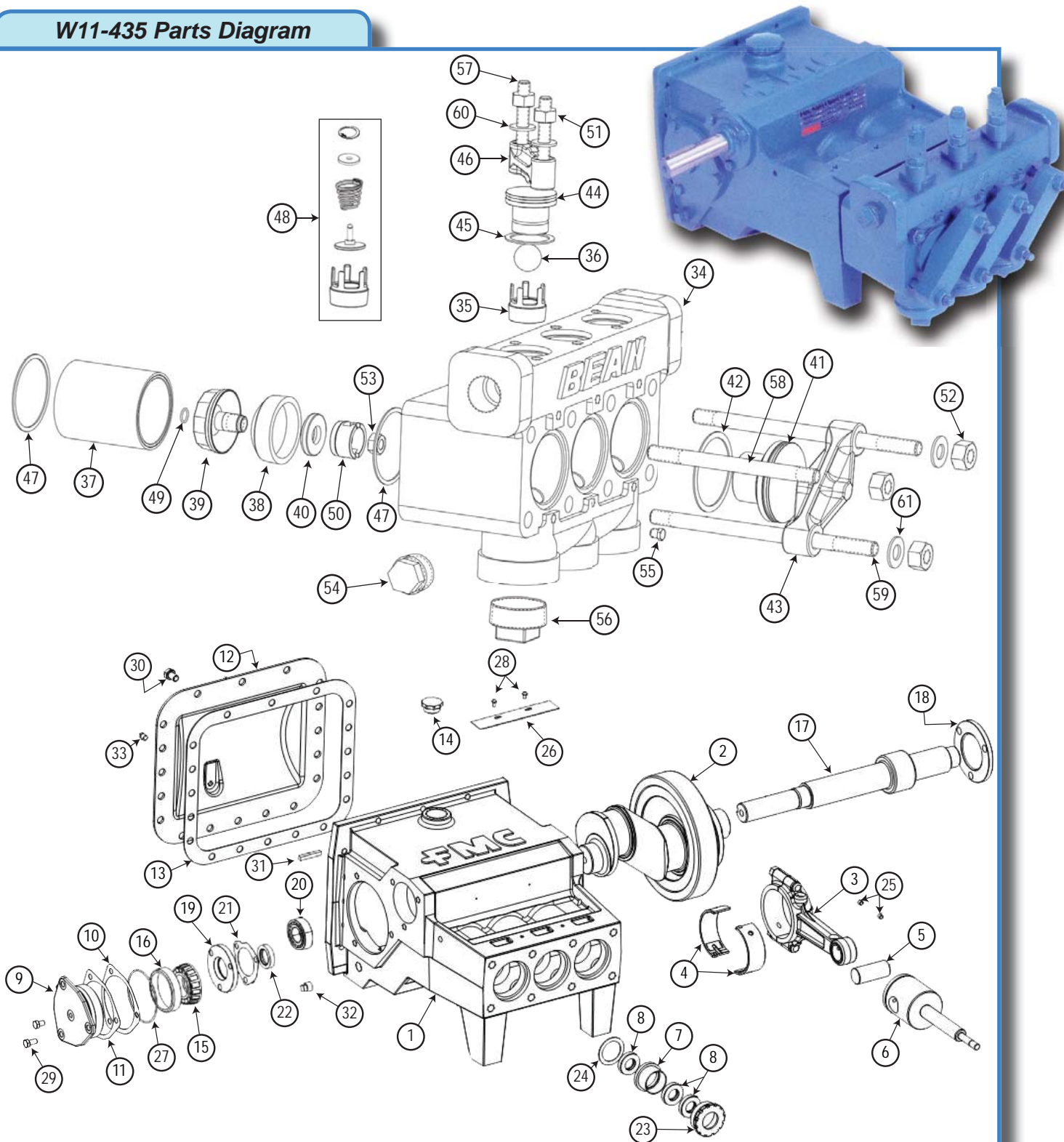
* Parts 44, 54 & 55 are not illustrated

** Parts A, B, C, D are part of Disc Valve Parts ASM
Part # 1256641



PUMPS - FMC water pumps

W11-435 Parts Diagram



Performance Table FMC W11-435

Pump Model	Piston Diameter (in)	Displacement (GAL/REV)	Max Pressure (PSI)	Pump Capacity (GPM) @ Input Speed (RPM)				
				350 RPM	500 RPM	635 RPM	750 RPM	900 RPM
W1122	2.750	0.0589	1,000	20.6	29.5	37.4	44.2	53.0



PUMPS - FMC W1122BCD

FMC
W11-435
PN: 39-160-04

Specifications:

- Standard Suction Size: 2.00" NPT
- Standard Discharge Size: 1.25" NPT
- Pump Weight (Average): 425 lbs

Features:

- Fluid end material of ductile iron
- Pump can be easily repacked
- Ceramic cylinders
- Internal gear reduction in crankcase eliminates need for large sheaves
- Ball valves are available for pumping viscous materials such as drilling muds

Item	Description	Qty	Part #	Item	Description	Qty	Part #
1	Pump Case	1	39-5257698	39	Piston Holder	3	39-A91663
2	Crankshaft & Gear	1	39-1285094	40	Piston Retainer	3	39-1216753
3	Connecting Rod	3	39-5266814	41	Cylinder Cover	3	39-1285112M
3A	Bushing, Connecting Rod	3	39-9226	42	Gasket Cylinder Cover - Fiber	3	39-1279674
3B	Bolt Connecting Rod	6	39-18744		Gasket Cylinder Cover - Copper	3	39-1247390
3C	Nut 1/2 - 20 elas. stop	6	39-1101270	43	Cylinder Cover Clamp Casting	3	39-A80392
4	Rod Bearing	6	39-P514965	44	Valve Cover	3	39-1285113
5	Wrist Pin	3	39-A91014	45	Gasket Valve Cover - Fiber	3	39-1279675
6	Crosshead ASM	3	39-1252939		Gasket Valve Cover - Copper	3	39-1247388
8	Oil Seal	9	39-1177489	46	Valve Cover Clamp	3	39-A80391
9	Bearing Housing	2	39-1248369	47	Gasket Stuffing Box - Fiber	6	39-1279676
10	Gasket	2	39-A91675		Gasket Stuffing Box - Copper	6	39-1247389
11	Shim	6	39-1252595	48 *	Valve Disc ASM	6	39-1278104
14	Oil Cap	1	39-A5054	48 A	Seat, Valve	6	39-1278054
15	Bearing Cone 2.25 Id X 1.1875 Lg	2	39-1177473	48 B	Valve	6	39-1283374
16	Bearing Cup 4.4375 Od X 1.1875 Lg	2	39-1177474	48 C	Spring	6	39-1283377
18	Pinion Cap	1	39-P508916	48 D	Washer	6	39-1283376
19	Pinion Bearing Cap (Used with Oil Seal 5257339)	1	39-5257338	48 E	Retaining Ring	6	39-1101229
21	Gasket	2	39-A91674	49	O-Ring 0.489 Id X 0.070 CS	3	39-1101176
22	Oil Seal (for Pinion Bearing Cap 5257338)	1	39-5257339	50	Plunger Nut 3/4-16 Unf	3	39-A5016
23	Packing Nut	3	39-1266323	51	Heavy Hex Nut1/2-13 Unc-2B	6	39-1121511
26	Inspection Plate	1	39-5260567	52	Heavy Hex Nut 5/8-11 Unc-2B	8	39-1121513
28	Cap Screw, Hx Hd, 1/4-20 Unc2A X 0.5 Lg	2	39-1100804	53	Nut, Hex 1/2-13 Unc	3	39-8309
30	Cap Screw, Hx Hd, 1/2-13 Unc2A X 0.75 Lg	20	39-1106980	54	Plug; 1-1/4"	1	39-BI-109-J
32	Pipe Plug Sq Hd 1/2 Npt Carbon Steel	2	39-1187048	55	Pipe Plug; Hex Head 1/8-27 Npt	6	39-1187048
34	Fluid Cylinder	1	39-1284777	56	Square Head Plug	2	39-1105121
35	Ball Seat	6	39-1284740	57	Stud 1/2-13Unc-2A X 3.5 Long	6	39-A5076
36	Ball, 1-1/8 Dia	6	39-1101419	58	Stud 5/8-11 Unc-2A X 7.88 Long	2	39-A91672
37	Cylinder-Ceramic	3	39-1267586	59	Stud 5/8-11 Unc-2A X 10.5 Long	6	39-1279602
	Cylinder-Porcelain	3	39-A91664CLM				
38	Cylinder Packing, Abrasive	3	39-5260221				
	Cylinder Packing, Standard	3	39-A268N				
18 Hole Back Cover Parts				16 Hole Back Cover Parts (pre 2014)			
7	Seal Holder	3	39-3268369	7	Sleeve, Packing nut	3	39-1266365
12	Back Cover - 18 Hole	1	39-P508969	12	Back Cover - 16 Hole	1	39-1250332
13	Back Cover Gasket - 18 Hole	1	39-P508966	13	Back Cover Gasket - 16 Hole	1	39-A91676
17	Pinion Shaft	1	39-P511596	17	Pinion Shaft	1	39-1266790
	Pinion Shaft (double sided)	1	39-P513120		Pinion Shaft (double sided)	1	39-34654
20	Bearing, Spherical Roller	2	39-P511746	20	Ball Bearing	2	39-1272558
24	Gasket	3	39-3268418	24	Washer, Packing	3	39-19510
25	Set Screw	6	39-1103470	25	Set Screw 5-16-18x 5/16	6	39-1182554
27	O-Ring 5.234 Id X 0139 Cs	2	39-3226710	29	Capscrew, hex head 1/2 -13 x 1-1/4	12	39-1100055
29	Cap Screw, Hx Hd, 1/2-13 Unc2A X 1.0 Lg	12	39-1100054	33	Petcock	1	39-1187039
31	Key 3/8" Sq X 2 1/2" Long	1	39-1104349	NS	Lube Fitting, 1/8 C/Z	3	39-1100759
33	Pipe Plug Sq Hd 1/8 Npt Hd Polyethylene	1	39-3269460	58	Stud 5/8-11 Unc-2A X 7.88 Long	2	39-A91672
60	Washer, Flat 1/2 Type A	6	39-1107385	59	Stud 5/8-11 Unc-2A X 10.5 Long	6	39-1279602
61	Washer, Flat 5/8 Type A	6	39-1107386				
NS	Pipe Plug Sq Hd 1-1/4 Npt Hd Polyethylene	1	39-3269461				



North America 1-800-669-3542
International +1-705-647-8138

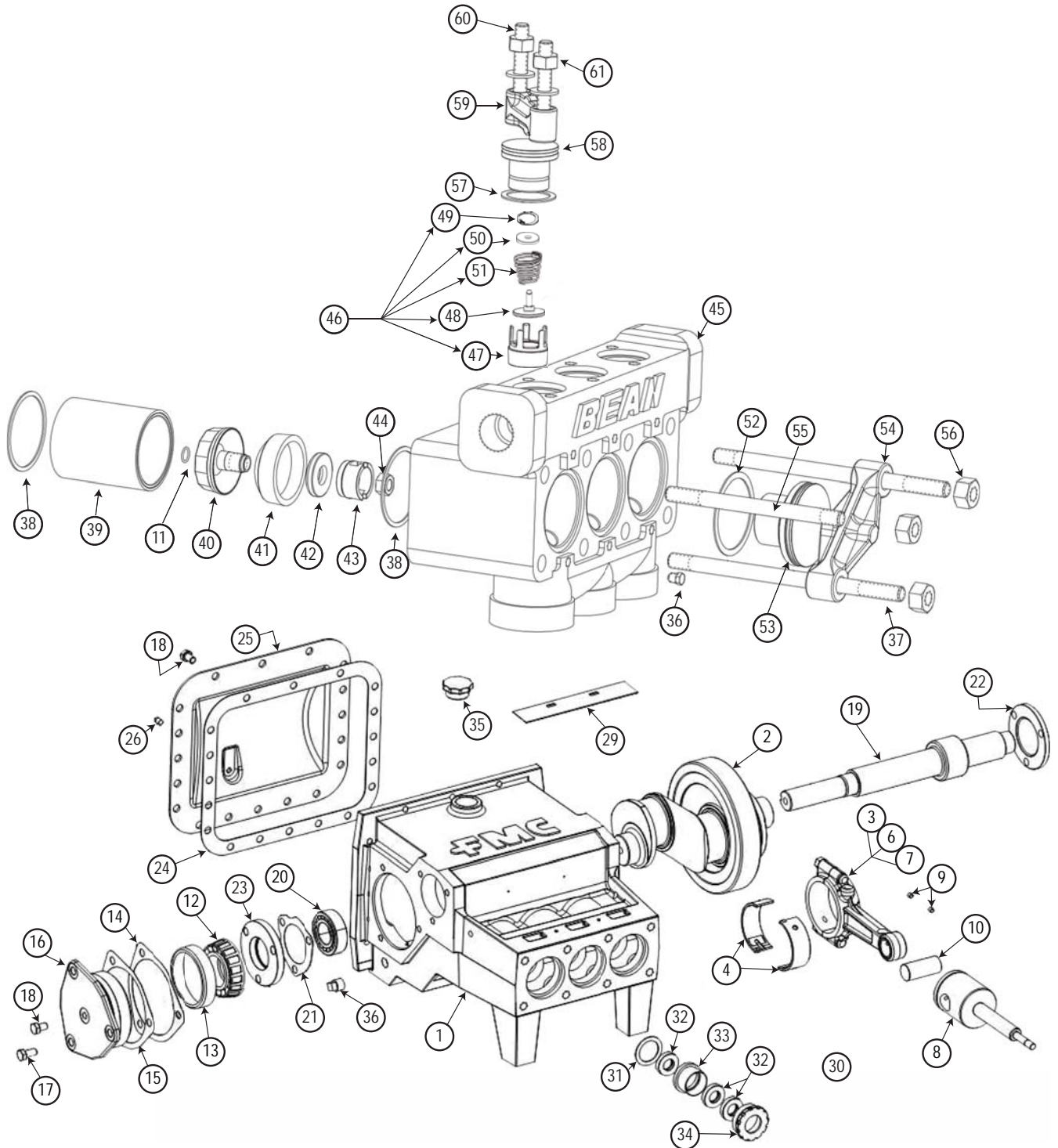
PAGE: PU7



www.timeltd.ca

PUMPS - FMC water pumps

L11-470 Parts Diagram



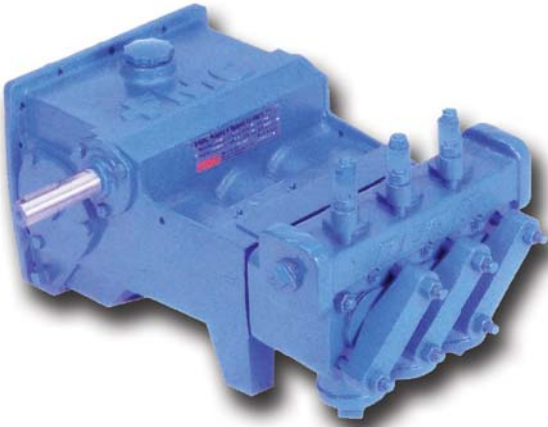
Performance Table FMC L11-470

Pump Model	Piston Diameter (in)	Displacement (GAL/REV)	Max Pressure (PSI)	Pump Capacity (GPM) @ Input Speed (RPM)				
				360 RPM	690 RPM	900 RPM	1050 RPM	1275 RPM
L1122	2.750	0.0589	1,000	21.2	40.7	53.0	61.9	75.1



PUMPS - FMC L1122D

FMC - L11-470
PN: 39-160-08



Specifications:

- Standard Suction Size: 2.50" NPT
- Standard Discharge Size: 1.25" NPT
- Pump Weight (Average): 460 lbs

Features:

- Fluid end material of ductile iron
- Pump can be easily repacked
- Ceramic cylinders
- Internal gear reduction in crankcase eliminates need for large sheaves
- Ball valves are available for pumping viscous materials such as drilling muds

Item	Description	Qty	Part #	Item	Description	Qty	Part #
1	Pump Case	1	39-5257698	38	Gasket Cyl., Fiber	6	39-1279676
2	Crankshaft	1	39-1285094		Gasket Cyl., Copper	6	39-1247389
3	Connecting Rod	3	39-5266814	39	Cyl., FMC Ceramic	3	39-1267586
4	Bearing Insert	3	39-1280910		Cyl., Porcelain	3	39-A91664CLM
5	Bushing, Connecting Rod	3	39-9226	40	Cup	3	39-A91663
6	Bolt Connecting Rod	6	39-18744	41	Cyl. Packing, Standard	3	39-A268N
7	Nut ½ - 20 elas. stop	6	39-1101270		Cyl. Packing, Abrasive	3	39-5260221
8	Crosshead & Rod ASM	3	39-1252939	42	Washer	3	39-1216753
9	Set Screw 5-16-18x 5/16	6	39-1182554	43	Nut, Plunger	3	39-A5016
10	Wrist Pin	3	39-A91014	44	Nut, Special	3	39-8309
11	O-ring 5/8 O.D. x 1/16	3	39-1101176	45	Valve Chamber	1	39-5257262
12	Cone, Bearing	2	39-1177473	46	Disc Valve ASM	6	39-5255419
13	Cup Bearing	2	39-1177474	47*	Seat, Valve	6	39-5253514
14	Gasket	2	39-A91675	48*	Valve	6	39-5260847
15	Shim	A/R	39-1252595	49*	Retaining Ring	6	39-320153
16	Housing, Crankshaft Bearing	2	39-1248369	50*	Washer	6	39-5260848
17	Capscrew, hex ½ -13 x 1 ^{1/4}	12	39-1100055	51*	Spring	6	39-1283377
18	Capscrew, hex ½ -13 x ¾	18	39-1106980	52	Cyl. Head O-Ring	3	39-1177476
19	Pinion Shaft	1	39-1266790	53	Cyl. Cover	3	39-1285112
	Pinion Shaft (double sided)	1	39-34654	54	Clamp Cyl. Head	3	39-A80392
20	Ball Bearing	2	39-1272558	55	Stud	2	39-A91672
21	Gasket	2	39-A91674	56	Nut, hex 5/8 -11	8	39-1121513
22	Cap, Bearing	1	39-A80795	57	Valve Cover O-Ring	3	39-1279675
23	Cap, Pinion Bearing	1	39-1266789	58	Valve Cover	3	39-1285113
24	Gasket, Cover	1	39-A91676	59	Clamp, Valve Cover	3	39-A80391
25	Cover, Plate	1	39-1250332	60	Stud, ½ x 3-1/4	6	39-A5076
26	Petcock	1	39-1187039	61	Nut, Hex ½ - 13	6	39-1121511
29	Inspection Plate	1	39-5260567				
30	Lube Fitting, 1/8 C/Z	3	39-1100759				
31	Washer, Packing	3	39-19510				
32	Seal, Oil	6	39-1177489				
33	Sleeve, Packing nut	3	39-1266365				
34	Nut, Plunger Rod	3	39-1266323				
35	Cap, Oil	1	39-A5054				
36	Plug, ½ pipe, magnetic	2	39-1187048				
37	Stud, long 5/8 diam.	6	39-5251859				

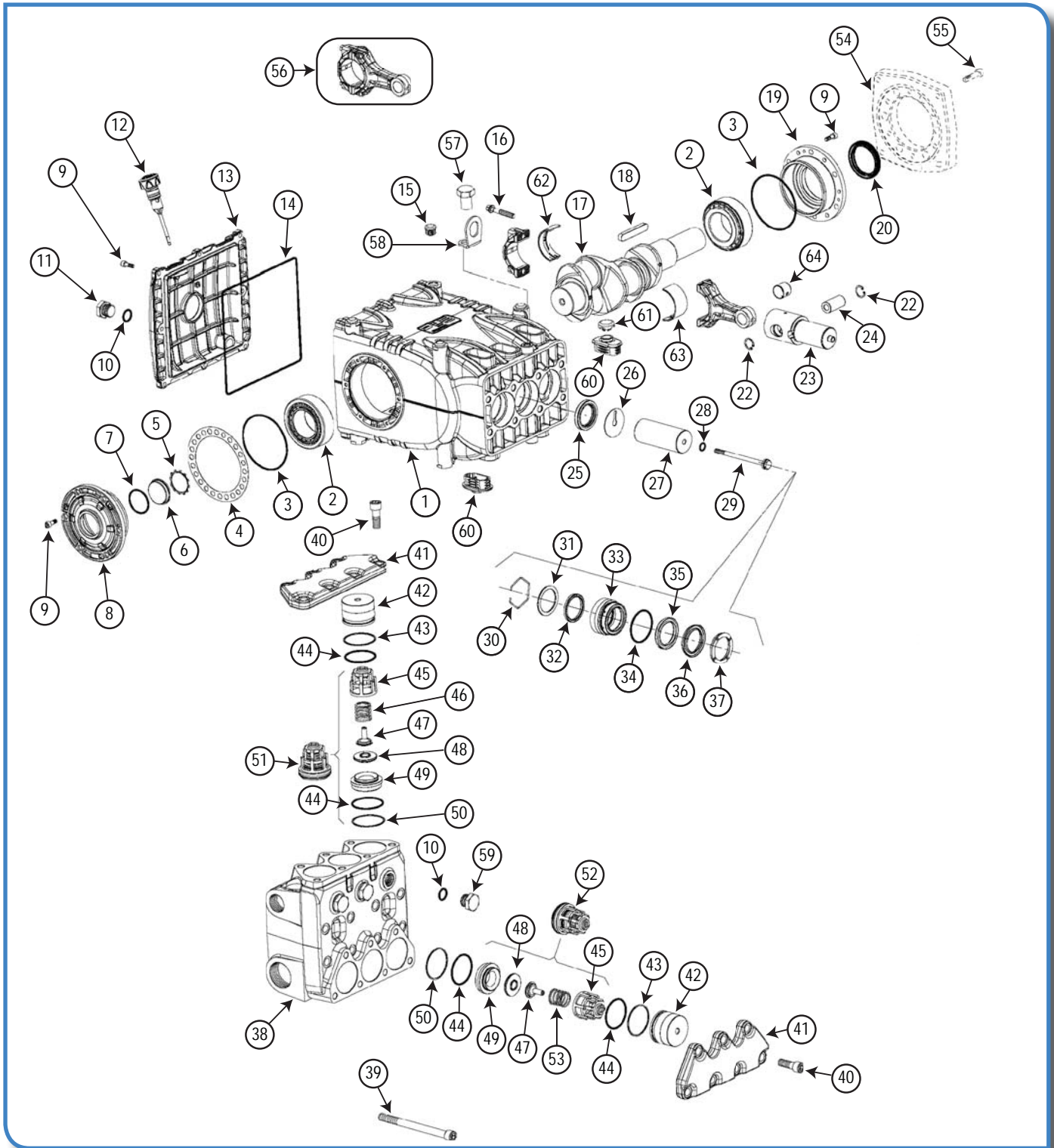
* Items 47 thru 51 are parts included in item 46



PUMPS - Pratissoli water pumps

Pratissoli KF Series

The Pratissoli range of triplex pumps, developed in more than 50 years of activity in the field, counts over 60 different models including flow rates up to 420 liters per minute, pressures up to 1500 bar, and powers up to 150 HP. All models are designed and produced to stand the toughest working conditions.



Pratissoli KF Series

**KF 40
PN-160-17**



For other models, please contact us.

Construction

- Triplex high pressure plunger pump, four versions in one
- Symmetrical crankcase for easy "left to right" conversion
- Single P.T.O. shaft, d. 40
- Plunger seal design: HP seal + LH seal with cooling chamber in low pressure
- Long life Suction/Delivery in line valves with spherical profile
- Splash lubrication

Material Quality

- Patent pending pump body in die cast aluminum
- Nickel-treated stainless steel head
- Conical shaft bearings
- Aluminum alloy connecting rods
- Forged steel crankshaft
- Crankshaft sealings in viton
- Guide pistons in surface treated cast iron
- Full ceramic plungers
- Stainless steel valves

REPAIR KITS FOR KF40

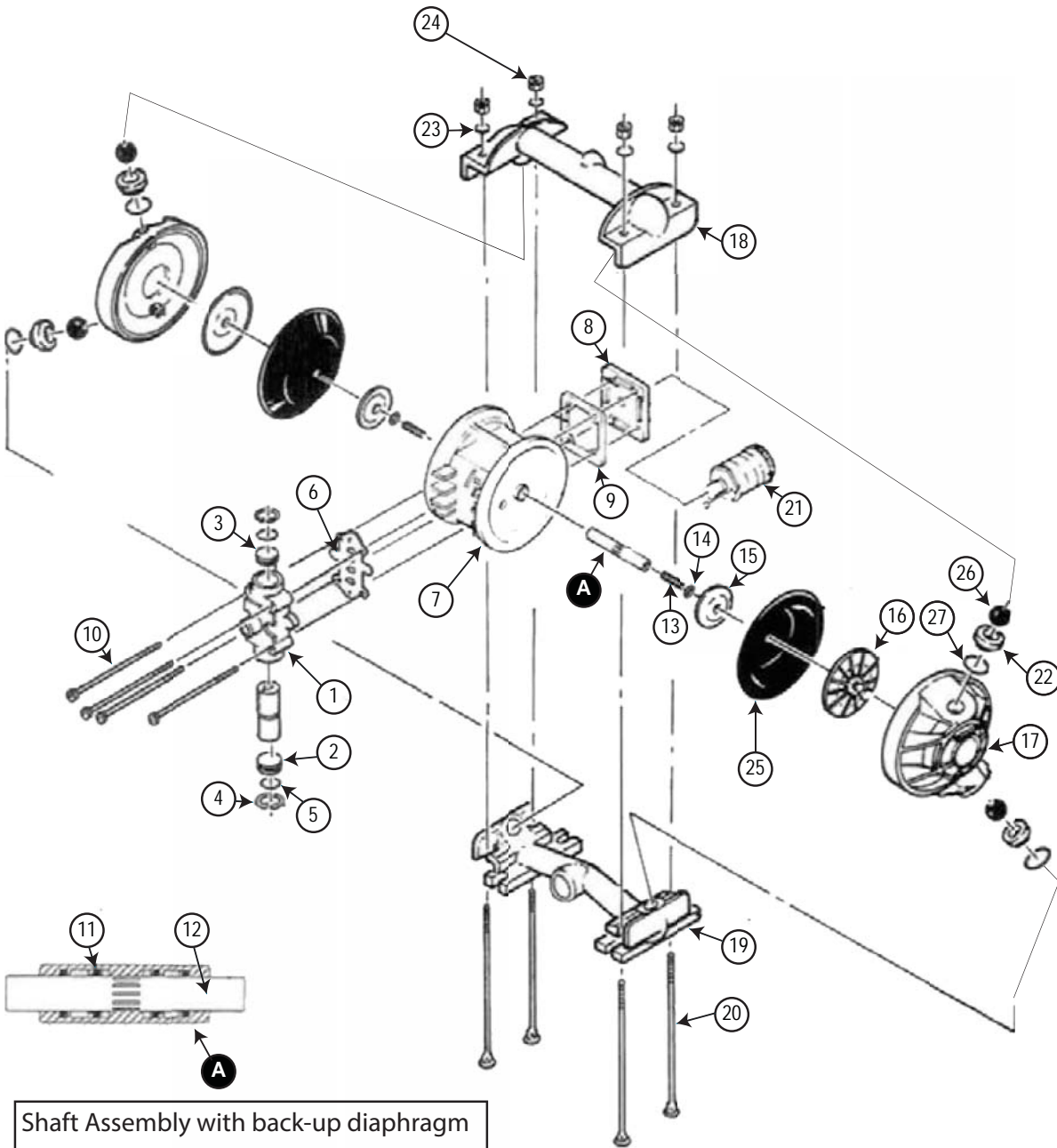
A	Plunger packing kit	KIT2020IPR		
B	Suction valves kit	KIT2012IPR		
C	Outlet valves kit	KIT2013IPR		
D	Complete seals kit	KIT2021IPR		
E	Conrod bushing kit	KIT2135IPR (STD)	KIT2154IPR(+.25)	KIT2155IPR (+.50)

Item	Part Number	Description	Kit	Qty	Item	Part Number	Description	Kit	Qty
1	71010022	Crankcase		1	90277400	Restop Ring Ø 30	A-D		3
2	91859000	Tapered Roller Bearing 33210/Q		2	90281800	Restop Ring Ø 36	A-D		3
3	90391800	O-Ring Ø 94,92x2,62 (3375)	D	2	90283800	Restop Ring Ø 40	A-D		3
4	71220081	Shim		1	90275800	Packing Ø 28 H.P.	A-D		3
	71220381	Shim		1	90277000	Packing Ø 30 H.P.	A-D		3
5	90075600	Retaining Ring ZJ45	D	1	90282000	Packing Ø 36 H.P.	A-D		3
6	70211801	Sight Glass, Oil Level		1	90283200	Packing Ø 40 H.P.	A-D		3
7	90387700	O-Ring Ø 39,34x2,62 (3156)	D	1	70100351	Head Ring Ø 28	D		3
8	71150122	Crankshaft End Cap		1	70100451	Head Ring Ø 30	D		3
9	99186700	Screw M6x18 UNI5931 Z.		20	71100251	Head Ring Ø 36	D		3
10	90384100	O-Ring Ø 17,13x2,62 (3068)	D	4	71100351	Head Ring Ø 40	D		3
11	98218300	Plug G 1/2" x13 - NICKEL		1	71121036	Pump Head Ø 28-30			1
12	98212000	Dip Stick		1	71125036	Pump Head Ø 28-30 - NPT			1
13	71160022	Crankcase Cover		1	71121136	Pump Head Ø 36			1
14	90400000	O-Ring Ø 215x3	D	1	71125136	Pump Head Ø 36 - NPT			1
15	98206000	Dust Plug Ø 15		4	71121236	Pump Head Ø 40			1
16	99313800	Connecting Rod Bolt		6	71125236	Pump Head Ø 40 - NPT			1
17	71020035	Crankshaft		1	99448000	Screw M12x150 UNI5931			8
18	91500000	Drive Key		1	99429500	Screw M12x35 UNI5931			14
19	71150022	Crankshaft End Cap PTO		1	71210136	Valve Cover Plate			2
20	90170000	Crankshaft Oil Seal Ø 50x65x8 - VITON	D	1	71211170	Valve Plug			6
22	90060600	Retaining Ring Ø 20 UNI7437		6	90525000	Anti-extrusion Ring Ø 50,9x55x1,5	D		6
23	71050015	Plunger Guide		3	90388900	O-Ring Ø 48,89x2,62 (3193)	D		12
24	97743000	Wrist Pin Ø 20x38		3	36204551	Valve Cage			6
25	90167800	Plunger Oil Seal Ø 38x52x7	D	3	94755000	Spring Ø 25,2x26			3
26	96714000	Flinger Washer Ø 10x50x1		3	36208651	Valve Guide			6
27	71040309	Plunger Ø 30		3	36208502	Valve Poppet			6
	71040409	Plunger Ø 36		3	36204156	Valve Seat			6
	71040509	Plunger Ø 40		3	90524000	Anti-extrusion Ring Ø 49,5x54x1,5	D		6
	71040609	Plunger Ø 28		3	36713701	Delivery Valve ASM	C		3
28	90367100	O-Ring Ø 11x2 (11020) - 90Sh.	D	3	36713601	Inlet Valve ASM	B		3
29	71219566	Plunger Bolt		3	94754000	Spring Ø 24,7x27			3
30	90079700	Retaining Ring Ø 52 UNI7437		3	10067720	Hydraulic Flange			1
31	71217670	Packing Washer Ø 28		3	99309900	Screw M8x35 UNI5931 Z.			6
	71217770	Packing Washer Ø 30		3	71030701	Connecting Rod Complete			3
	71218070	Packing Washer Ø 36		3	99512000	Screw M16x1,5x25 UNI5740 8.8 Z.			1
	71218270	Packing Washer Ø 40		3	71223074	Lifting Point			1
32	90275000	Packing Ø 28 L.P.	A-D	3	98218100	Plug G 1/2" x13 - SS			3
	90276000	Packing Ø 30 L.P.	A-D	3	71225851	Plunger Plug			6
	90280000	Packing Ø 36 L.P.	A-D	3	71225951	Dust Cap			3
	90283000	Packing Ø 40 L.P.	A-D	3	90924300	Connecting Rod Bushing - Inf.	E		3
33	71215670	Packing Support Ø 28		3	90924400	Connecting Rod Bushing +0.25- Inf.	E		3
	71215370	Packing Support Ø 30		3	90924500	Connecting Rod Bushing +0.50 - Inf.	E		3
	71215470	Packing Support Ø 36		3	90924000	Connecting Rod Bushing - Sup.	E		3
	71215570	Packing Support Ø 40		3	90924100	Connecting Rod Bushing +0.25 - Sup.	E		3
34	90389100	O-Ring Ø 52,07x2,62	A-D	3	90924200	Connecting Rod Bushing Ila +0.5-0Sup.	E		3
35	90275500	Restop Ring Ø 28	A-D	3	90911000	Wrist Pin Bushing			3

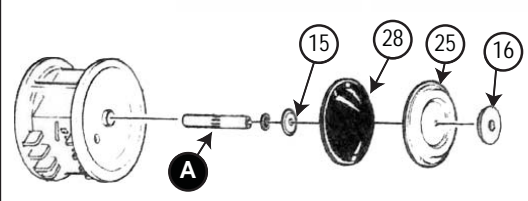


PUMPS - NOMAD Diaphragm pumps

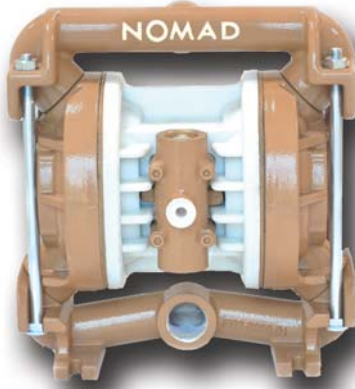
NTG25 Parts Diagram



Shaft Assembly with back-up diaphragm



PUMPS - NOMAD NTG25



NTG25 1" Aluminum Diaphragm Pump Assemblies

Part Number	Description
25-2693	Includes Neoprene Diaphragm, Valve Ball and Valve Seat
25-2696	Includes Buna Diaphragm, Valve Ball and Valve Seat
25-2697	Includes Nordel Diaphragm, Valve Ball and Valve Seat
25-26964	Includes Hytrel Diaphragm, Valve Ball and Valve Seat
25-2698	Includes Viton Diaphragm, Valve Ball and Valve Seat
25-2699	Includes Santoprene Diaphragm, Valve Ball and Valve Seat
25-2691	Includes PTFE Diaphragm, Valve Ball and Valve Seat

Air Inlet 6 mm (1/4")
 Inlet 25 mm (1")
 Outlet 19 mm (3/4")
 Suction Lift 5.18 m Dry (17')
 9.45 m Wet (31')
 Max. Flow Rate 132 lpm (35 gpm)
 Max. Size Solids 3.2 mm (1/8")
 Height 279 mm (11.0")
 Width 267 mm (10.5")
 Depth 185 mm (7.3")

H2O flow rates listed

Caution: Do not exceed 8.6 bar (125 psig) air supply pressure.

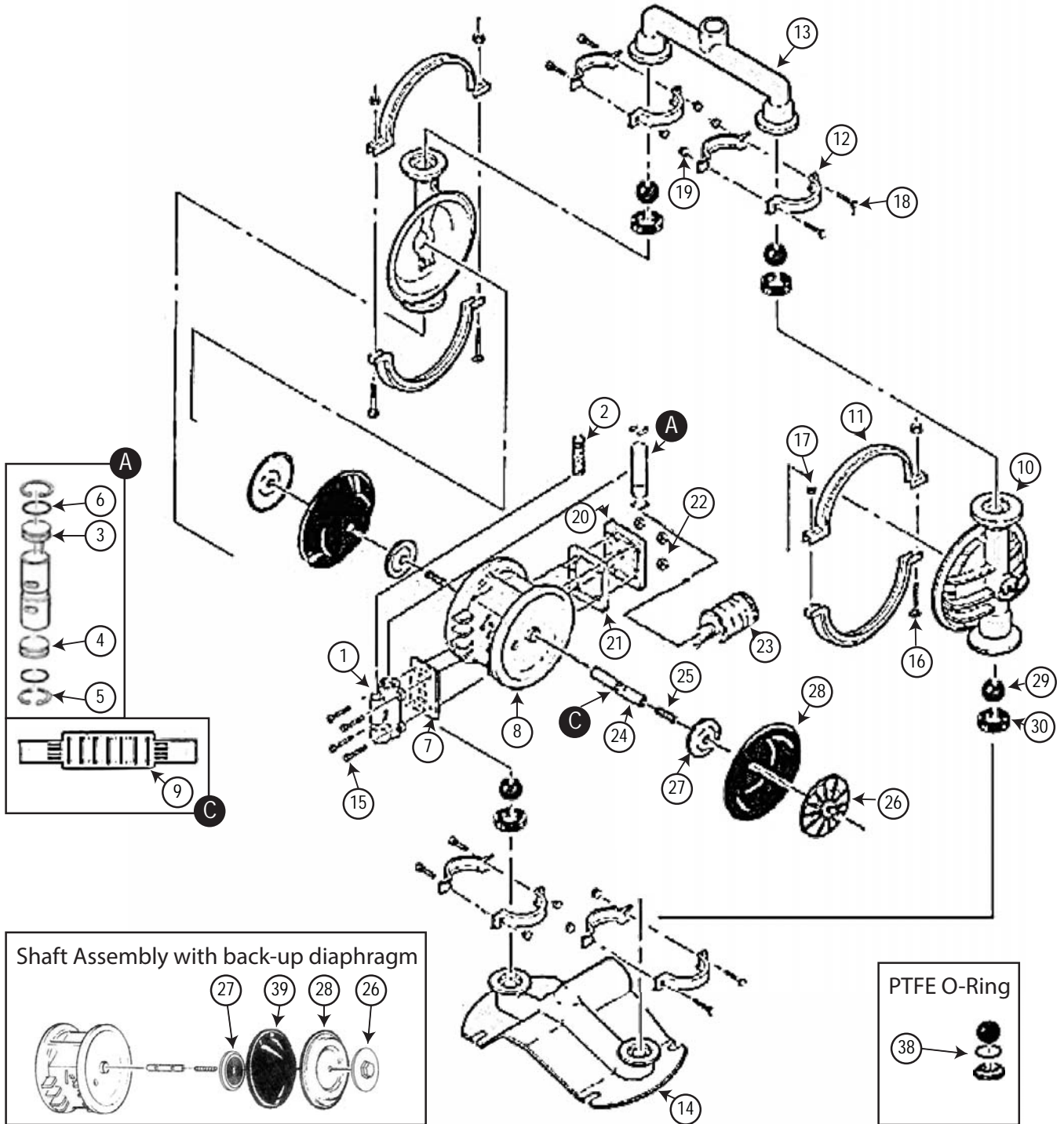
PTFE Diaphragms: reduce flow by 25%

Item	Description	Qty	Part Number
1	Air Valve ASM	1	N02-2000-07
	Air Valve ASM Gold	1	N02-2012-07
2	Air Valve End Cap w/out Guide (Bottom)	1	N02-2331-23
3	Air Valve End Cap w/ Guide (Top)	1	N02-2301-23
4	Air Valve Snap Ring	2	N02-2650-03
5	Air Valve Cap O-ring	2	N02320052200
6	Air Valve Gasket	1	N02-2600-52
7	Center Section	1	N02315120225
8	Muffler Plate	1	N02-3180-20
9	Muffler Plate Gasket	1	N02350052500
10	Air Valve Cap Screw 1/4" - 20 x 2"	4	N02-6000-08
10a	Hex Head Nut 1/4" -20 (Not Shown)	4	N02-6400-08
11	Center Block TRACKER™ Seal	4	N02321077225
12	Shaft	1	N0238200307
13	Shaft Stud	2	N02-6150-08
14	Disc Spring	2	N02-6802-08
15	Inner Piston	2	N02-3750-01
16	Outer Piston	2	N02-4601-01
17	Liquid Chamber	2	N02-5000-01
18	Discharge Manifold	1	N02-5020-01
19	Inlet Manifold	1	N02-5080-01
20	Manifold Bolt 3/6" -16 x 8-1/2"	4	N02-6080-08
21	Muffler	1	N02-3510-99
22	Valve Seat - Aluminum	4	N02-1120-01
23	Manifold Bolt Washer	4	N02-6720-08
24	Manifold Bolt Nut 3/8" - 16	4	N02-6430-08
25	Diaphragm - Neoprene	2	N02-1010-51
	Diaphragm - Buna	2	N02-1010-52
	Diaphragm - Viton®	2	N02-1010-53
	Diaphragm - Nordel®	2	N02-1010-54
	Diaphragm - PTFE	2	N02-1010-55
	Diaphragm - Hytrel®	2	N02-1010-56
	Diaphragm - Santoprene®	2	N02-1010-58
	Diaphragm - PTFE	2	N02-1060-52
26	Valve Ball - Neoprene	4	N02-1080-51
	Valve Ball - Buna	4	N02-1080-52
	Valve Ball - Viton®	4	N02-1080-53
	Valve Ball - Nordel®	4	N02-1080-54
	Valve Ball - PTFE	4	N02-1080-55
	Valve Ball - Hytrel®	4	N02-1080-56
	Valve Ball - Santoprene®	4	N02-1080-58
	Valve Ball - PTFE	2	N02-1060-56
27	Valve Seat O-ring - Neoprene	4	N02-1200-51
	Valve Seat O-ring - Buna	4	N02-1200-52
	Valve Seat O-ring - Viton®	4	N02-1200-53
	Valve Seat O-ring - Nordel®	4	N02-1200-54
	Valve Seat O-ring - PTFE	4	N02-1200-55
	Valve Seat O-ring - Hytrel®	4	N02-1200-56
	Valve Seat O-ring - Santoprene®	4	N02-1200-58
	Valve Seat O-ring - PTFE / BUNA	2	N02-1060-52
28	Back-up Diaphragm - PTFE / BUNA	2	N02-1060-52
	Back-up Diaphragm - Hytrel®	2	N02-1060-56



PUMPS - NOMAD Diaphragm pumps

NTG40 Parts Diagram



Shaft Assembly with back-up diaphragm

PTFE O-Ring



PUMPS - NOMAD NTG40

NTG40



NTG40 1-1/2" Aluminum Diaphragm Pump Assemblies

Part Number	Description
40-2693	Includes Neoprene Diaphragm, Valve Ball and Valve Seat
40-2696	Includes Buna Diaphragm, Valve Ball and Valve Seat
40-2697	Includes Nordel Diaphragm, Valve Ball and Valve Seat
40-26964	Includes Hytrel Diaphragm, Valve Ball and Valve Seat
40-2698	Includes Viton Diaphragm, Valve Ball and Valve Seat
40-2699	Includes Santoprene Diaphragm, Valve Ball and Valve Seat
40-2691	Includes PTFE Diaphragm, Valve Ball and Valve Seat

Air Inlet 13 mm (1/2")
 Inlet 38 mm (1-1/2")
 Outlet..... 32 mm (1-1/4")
 Suction Lift..... 5.49 m Dry (18')
 8.53 m Wet (28')
 Max. Flow Rate 288 lpm (76 gpm)
 Max. Size Solids 4.8 mm (3/16")
 Height 442 mm (17.4")
 Width 391 mm (15.4")
 Depth 285 mm (11.2")
 Est. Ship Weight Aluminum 17 kg (38 lbs)

H2O flow rates listed

Caution: Do not exceed 8.6 bar (125 psig) air supply pressure.

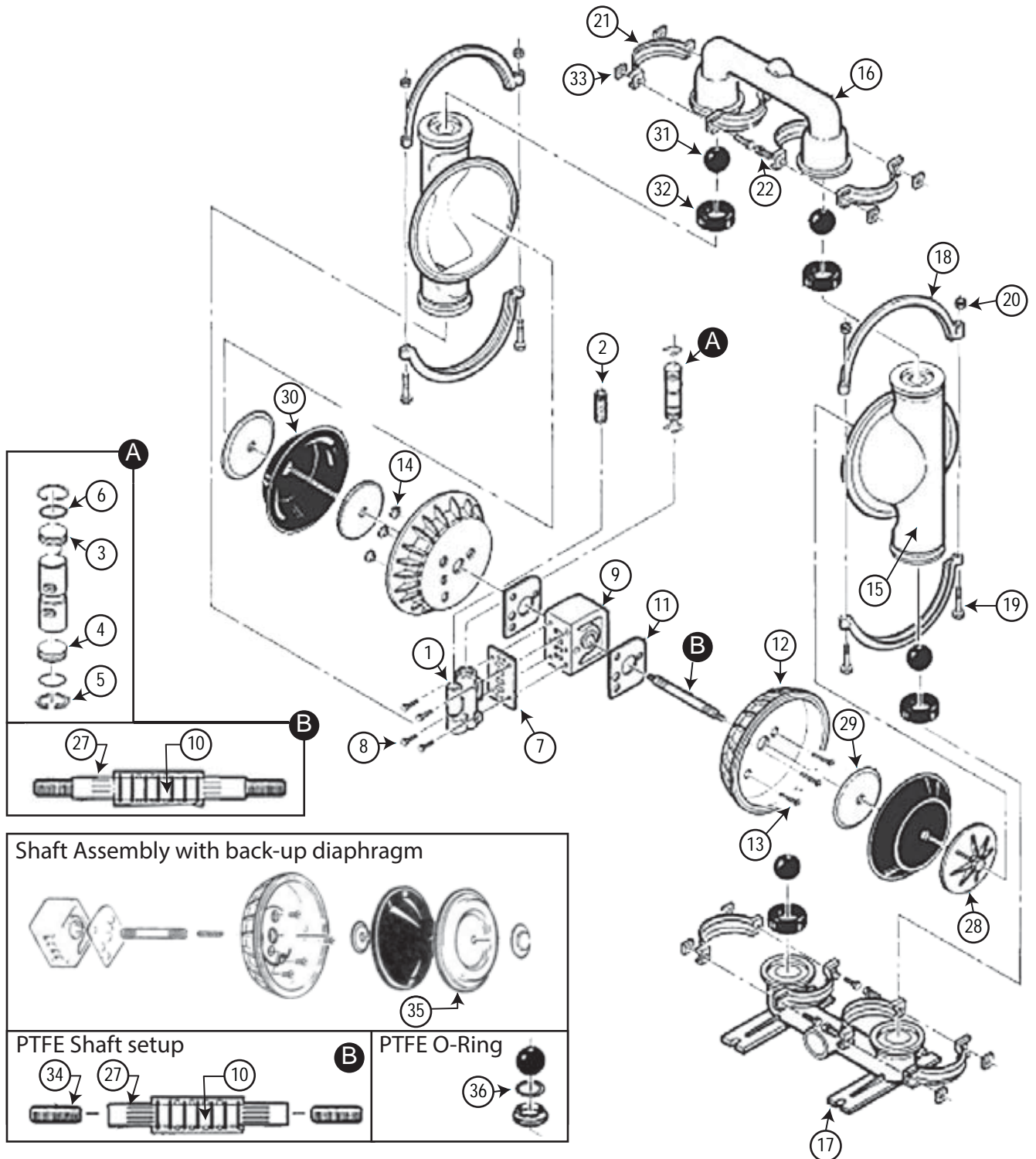
PTFE Diaphragms: reduce flow by 25%

Item	Description	Qty	Part #	Item	Description	Qty	Part #
1	Air Valve ASM	1	N04-2000-07	26	Outer Piston	2	N04-4552-01
	Air Valve ASM Gold	1	N04-2012-07		Outer Piston PTFE	2	N04-4600-01
2	Air Valve Screen	1	N04-2500-07	27	Inner Piston	2	N04-3700-01
3	Air Valve End Cap w/ Guide (Top)	1	N04-2300-23		Inner Piston PTFE	2	N04-3750-01
4	Air Valve End Cap w/out Guide (Bottom)	1	N04-2330-23	28	Diaphragm Neoprene	2	N04-1010-51
5	Air Valve Snap Ring	2	N04-2650-03		Diaphragm Buna	2	N04-1010-52
6	Air Valve Cap O-ring	2	N04-2390-52	29	Diaphragm Viton®	2	N04-1010-53
7	Air Valve Gasket	1	N04-2600-52		Diaphragm Nordel®	2	N04-1010-54
8	Center Section	1	N04315020225	30	Diaphragm PTFE	2	N04-1010-55
9	Center Block TRACKER™ Seal	7	N04321077225		Diaphragm Hytrel®	2	N04-1010-56
10	Liquid Chamber	2	N04-5000-01	31	Diaphragm Santoprene®	2	N04-1010-58
11	Clamp Band (Lg)	2	N04-7330-08		Valve Ball Neoprene	4	N04-1080-51
12	Clamp Band (Sm)	4	N04-7100-08	32	Valve Ball Buna	4	N04-1080-52
13	Discharge Manifold	1	N04-5020-01		Valve Ball Viton®	4	N04-1080-53
14	Inlet Manifold	1	N04-5080-01	33	Valve Ball Nordel®	4	N04-1080-54
15	Air Valve Cap Screw 1/4" - 20 x 2"	4	N04-6000-08		Valve Ball PTFE	4	N04-1080-55
16	Large Clamp Band Bolt 5/16"	4	N04-6070-08	34	Valve Ball Hytrel®	4	N04-1080-56
17	Large Hex Nut 5/16" - 18	4	N04-6420-08		Valve Ball Santoprene®	4	N04-1080-58
18	Small Clamp Band Bolt 1/4" -20 x 1-3/4"	8	N04-6050-08	35	Valve Seat Neoprene	4	N04-1120-51
19	Small Hex Nut 1/4" - 20	8	N04-6400-08		Valve Seat Buna	4	N04-1120-52
20	Muffler Plate	1	N04-3180-20	36	Valve Seat Viton®	4	N04-1120-53
21	Muffler Plate Gasket	1	N04-3500-52		Valve Sea Nordel®	4	N04-1120-54
22	Air Valve Hex Nut 1/4"-20	4	N04-6400-08	37	Valve Seat PTFE	4	N04-1120-55
23	Muffler	1	N04-3510-99		Valve Seat Hytrel®	4	N04-1120-56
24	Shaft	1	N0438000307	38	Valve Seat Santoprene®	4	N04-1120-58
	Shaft - PTFE	1	N0438200307		PTFE Valve Seat O-Ring	4	N04-1200-55
25	Shaft Stud	2	N04-6150-08	39	Back-up Diaphragm	2	N04-1060-52
	Shaft Stud - PTFE	2	N04-6152-08				



PUMPS - NOMAD Diaphragm pumps

NTG50 Parts Diagram



PUMPS - NOMAD NTG50



NTG50 2" Aluminum Diaphragm Pump Assemblies

Part Number	Description
50-2693	Includes Neoprene Diaphragm, Valve Ball and Valve Seat
50-2696	Includes Buna Diaphragm, Valve Ball and Valve Seat
50-2697	Includes Nordel Diaphragm, Valve Ball and Valve Seat
50-26964	Includes Hytrel Diaphragm, Valve Ball and Valve Seat
50-2698	Includes Viton Diaphragm, Valve Ball and Valve Seat
50-2699	Includes Santoprene Diaphragm, Valve Ball and Valve Seat
50-2691	Includes PTFE Diaphragm, Valve Ball and Valve Seat

Air Inlet 19 mm (3/4")
 Inlet 51 mm (2")
 Outlet 51 mm (2")
 Suction Lift 6.4 m Dry (21')
 9.5 m Wet (31')
 Max. Flow Rate 617 lpm (163 gpm)
 Max. Size Solids 6.4 mm (1/4")
 Height 668 mm (26.3")
 Width 404 mm (15.9")
 Depth 343 mm (13.5")

H2O flow rates listed

Caution: Do not exceed 8.6 bar (125 psig) air supply pressure.

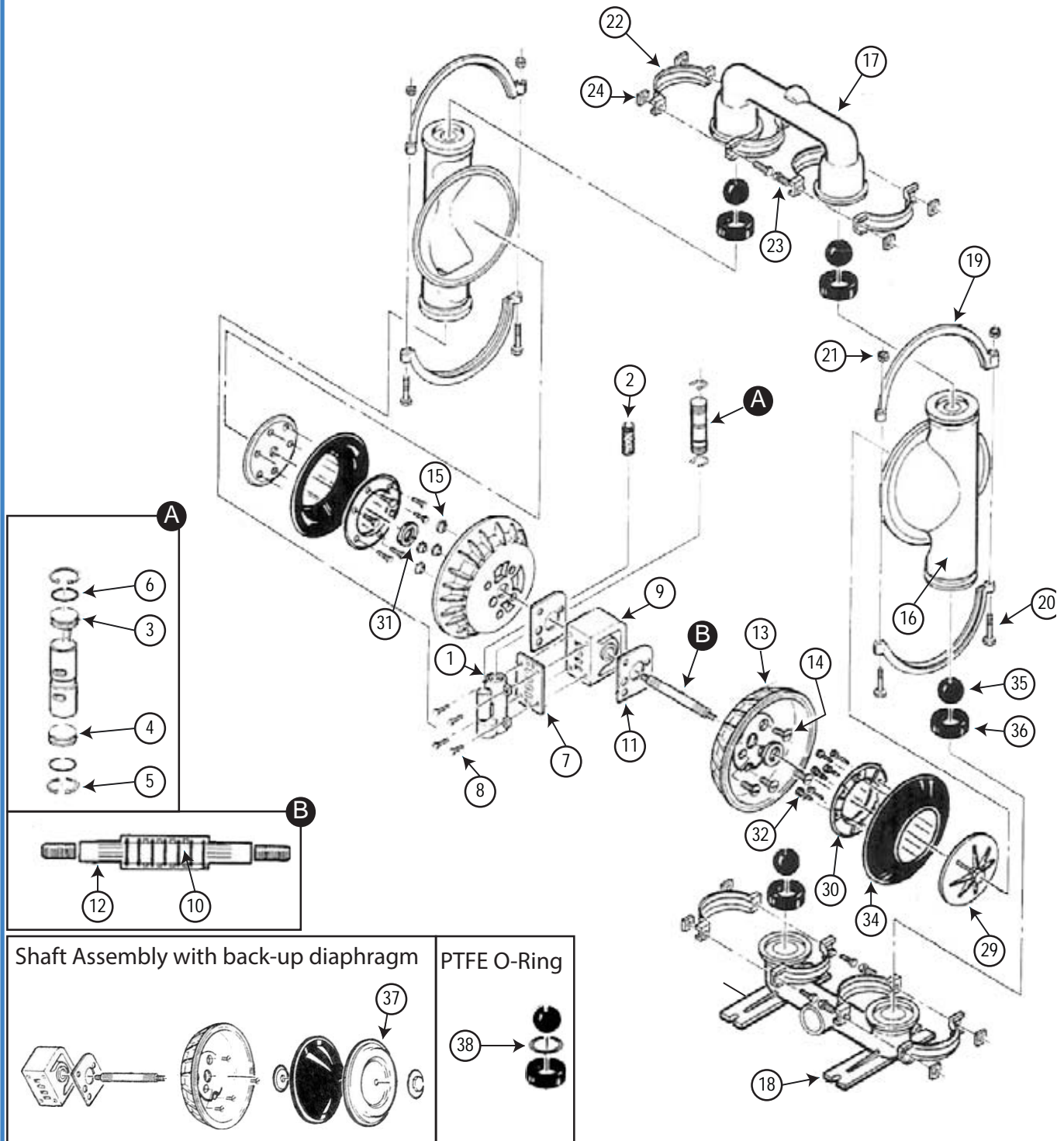
PTFE Diaphragms: reduce flow by 25%

Item	Description	Qty	Part Number	Item	Description	Qty	Part Number
1	Air Valve ASM	1	N08-2000-07	28	Outer Piston	2	N08-4550-01
	Air Valve ASM Gold	1	N08-2012-07			2	N08-4600-01
2	Air Valve Screen	1	N08-2500-07	29	Inner Piston	2	N08-3700-01
3	Air Valve End Cap w/ Guide (Top)	1	N08-2300-23			2	N08-3750-01
4	Air Valve End Cap w/out Guide (Bottom)	1	N08-2330-23	30	Diaphragm Neoprene	2	N08-1010-51
5	Air Valve Snap Ring	2	N08-2650-03		Diaphragm Buna	2	N08-1010-52
6	Air Valve Cap O-ring	2	N08-2390-52		Diaphragm Viton	2	N08-1010-53
7	Air Valve Gasket	1	N08-2600-52		Diaphragm Nordel	2	N08-1010-54
8	Air Valve Screw 5/16" - 18 x 2 1/4"	4	N08-6000-08		Diaphragm PTFE	2	N08-1010-55
9	Center Block	1	N08310001225		Diaphragm Hytrel	2	N08-1010-56
10	Center Block TRACKER™ Seal	7	N08321055225	31	Diaphragm Santoprene	2	N08-1010-58
11	Block Gasket	2	N08-3520-52		Valve Ball Neoprene	4	N08-1080-51
12	Air Chamber	2	N08-3650-01	Valve Ball Buna	4	N08-1080-52	
13	Air Chamber Screw 3/8" - 16 x 4"	4	N08-6200-08	Valve Ball Viton	4	N08-1080-53	
14	Air Chamber Cone Nut 3/8" - 16	4	N08-6550-08	32	Valve Ball Nordel	4	N08-1080-54
15	Liquid Chamber	2	N08-5000-01		Valve Ball PTFE	4	N08-1080-55
16	Discharge Manifold	1	N08-5020-01	Valve Ball Hytrel	4	N08-1080-56	
17	Inlet Manifold	1	N08-5080-01	Valve Ball Santoprene	4	N08-1080-58	
18	Large Clamp Band ASM	2	N08-7300-08	33	Valve Seat Neoprene	4	N08-1120-51
19	Large Carriage Bolt 3/8" - 16 x 3"	4	N08-6120-08		Valve Seat Buna	4	N08-1120-52
20	Large Hex Nut 3/8" - 16	4	N08-6420-08	Valve Seat Viton	4	N08-1120-53	
21	Small Clamp Band ASM	4	N08-7100-08	34	Valve Seat Nordel	4	N08-1120-54
22	Small Carriage Bolt 5/16" - 18 x 1-3/8"	8	N08-6050-08		Valve Seat PTFE	4	N08-1120-55
23	Muffler (Not Shown)	1	N08-3510-99	35	Valve Seat Hytrel	4	N08-1120-56
24	Check Ball (Not Shown)	1	N08-1450-51		Valve Seat Santoprene	4	N08-1120-58
25	Check Body (Not Shown)	1	N08-3550-01	36	Small Hex Nut 5/16"-18	8	N08-6450-08
26	Pipe Nipple (Not Shown)	1	N08-7420-08		Small Hex Nut 5/16"-18 PTFE	8	N08-6400-08
27	Shaft	1	N0838000307	37	Shaft Stud 1/2" - 20 x 1 - 7/8"	2	N08-6152-08
		1	N0838200307		Back-up Diaphragm	2	N08-1060-52
				36	PTFE Valve Seat O-Ring	4	N08-1200-55
				37	Washer, Flat (Not Shown)	8	N0867200770



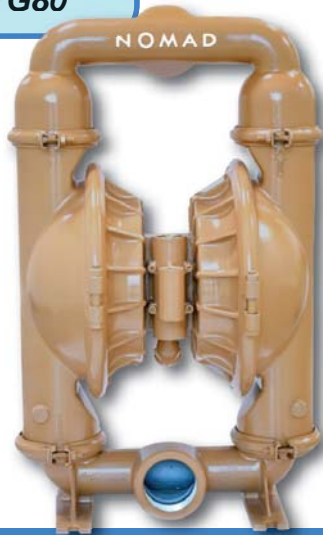
PUMPS - NOMAD Diaphragm pumps

NTG80 Parts Diagram



PUMPS - NOMAD NTG80

NTG80



NTG80 3" Aluminum
Diaphragm Pump Assemblies

Part Number Description

Part Number	Description
80-2693	Includes Neoprene Diaphragm, Valve Ball and Valve Seat
80-2696	Includes Buna Diaphragm, Valve Ball and Valve Seat
80-2697	Includes Nordel Diaphragm, Valve Ball and Valve Seat
80-26964	Includes Hytrel Diaphragm, Valve Ball and Valve Seat
80-2698	Includes Viton Diaphragm, Valve Ball and Valve Seat
80-2699	Includes Santoprene Diaphragm, Valve Ball and Valve Seat
80-2691	Includes PTFE Diaphragm, Valve Ball and Valve Seat

Air Inlet	19 mm (3/4")
Inlet	76 mm (3")
Outlet	76 mm (3")
Suction Lift	5.5 m Dry (18')
	9.45 m Wet (31')
Max. Flow Rate	878 lpm (232 gpm)
Max. Size Solids	10 mm (3/8")
Height	810 mm (31.9")
Width	432 mm (17.0")
Depth	279 mm (11.0")

H2O flow rates listed

Caution: Do not exceed 8.6 bar (125 psig) air supply pressure.

PTFE Diaphragms: reduce flow by 25%

Item	Description	Qty	Part Number	Item	Description	Qty	Part Number
1	Air Valve ASM	1	N15-2000-07	29	Outer Piston	2	N15-4550-01
	Air Valve ASM Gold	1	N15-2012-07				N15-4600-03
2	Air Valve Screen	1	N15-2500-07	30	Inner Piston	2	N15-3700-01
3	Air Valve End Cap w/ Guide (Top)	1	N15-2300-23				N15-3750-01
4	Air Valve End Cap w/out Guide (Bottom)	1	N15-2330-23	31	Inner Piston Back-up Washer	2	N15-6850-08
5	Air Valve Snap Ring	2	N15-2650-03	32	Piston ASM Bolt 2 3/8" - 16 x 1 1/2"	12	N15-6130-08
6	Air Valve Cap O-ring	2	N15-2390-52	33	Washer, Flat (Not Shown)	12	N15-6720-08
7	Air Valve Gasket	1	N15-2600-52	34	Diaphragm Neoprene	2	N15-1010-51
8	Air Valve Screw 5/16" - 18 x 2 1/4"	4	N15-6000-08		Diaphragm - Buna	2	N15-1010-52
9	Center Block	1	N15310001225		Diaphragm Viton	2	N15-1010-53
10	Center Block TRACKER™ Seal	7	N15321077225		Diaphragm Nordel	2	N15-1010-54
11	Block Gasket	2	N15-3520-52		Diaphragm PTFE	2	N15-1010-55
12	Shaft	1	N1538000307		Diaphragm Hytrel	2	N15-1010-56
13	Air Chamber	2	N15-3650-01		Diaphragm Santoprene	2	N15-1010-58
14	Air Chamber Screw 3/8" - 16 x 4"	4	N15-6200-08		Valve Ball Neoprene	4	N15-1080-51
15	Air Chamber Cone Nut 3/8" - 16	4	N15-6550-08		Valve Ball Buna	4	N15-1080-52
16	Liquid Chamber	2	N15-5000-01		Valve Ball Viton	4	N15-1080-53
17	Discharge Manifold	1	N15-5020-01	35	Valve Ball Nordel	4	N15-1080-54
18	Inlet Manifold	1	N15-5080-01		Valve Ball PTFE	4	N15-1080-55
19	Large Clamp Band ASM	2	N15-7300-08	Valve Ball Hytrel	4	N15-1080-56	
20	Large Carriage Bolt 1/2" - 13 x 3 1/2"	4	N15-6120-08	Valve Ball Santoprene ®	4	N15-1080-58	
21	Large Hex Nut 1/2" -13	4	N15-6420-08	36	Valve Seat - Neoprene	4	N15-1120-51
22	Small Clamp Band ASM	4	N15-7100-08		Valve Seat - Buna	4	N15-1120-52
23	Small Carriage Bolt 3/8" - 16 x 2"	8	N15-6050-08	Valve Seat - Viton ®	4	N15-1120-53	
24	Small Hex Nut 3/8" -16	8	N15-6450-08	Valve Seat - Nordel ®	4	N15-1120-54	
25	Muffler (Not Shown)	1	N15-3510-99	Valve Seat - PTFE	4	N15-1120-55	
26	Check Ball (Not Shown)	1	N15-1450-51	Valve Seat - Hytrel ®	4	N15-1120-56	
27	Check Body (Not Shown)	1	N15-3550-01	Valve Seat - Santoprene	4	N15-1120-58	
28	Pipe Nipple (Not Shown)	1	N15-7420-08	37	Back-up Diaphragm	2	N15-1060-52
				38	PTFE Valve Seat O-Ring	4	N15-1200-55



PUMPS - CUSTOM E0413 ASM

Globe Air Motor FMC E0413 ASM

Consists of FMC E0413 pump, Globe VA10C Nema Air Motor, SEW Eurodrive RX77 4.04:1 gear reducer, skid frame, lifting bracket, relief valve, and guards.

Air Motor

PERFORMANCE V10 12.8 HP/9.5 kW REVERSIBLE

- Simple & inexpensive variable speed and torque control with flow control valve and/or pressure regulator.
- Intrinsically safe for explosion proof environments.
- Can be stalled indefinitely under load. They will not over heat or burn out.
- Instantly reversible, operated with a simple control valve.
- Controllable over a wide speed range.
- Resistant to warm, dirty and damp conditions.
- Air motors are compact and light weight compared to equivalent electric motors.

Gear Reducer

SEW Eurodrive RX77

Single Stage, Foot mounted, Helical gear motor
4.04 to 1 ratio

Pump

FMC E0413

See info on E0413 pump page

Specifications:

- Standard Suction Size: 1.25" NPT
- Standard Discharge Size: 0.75" NPT
- Pump Weight (Average): 80 lbs

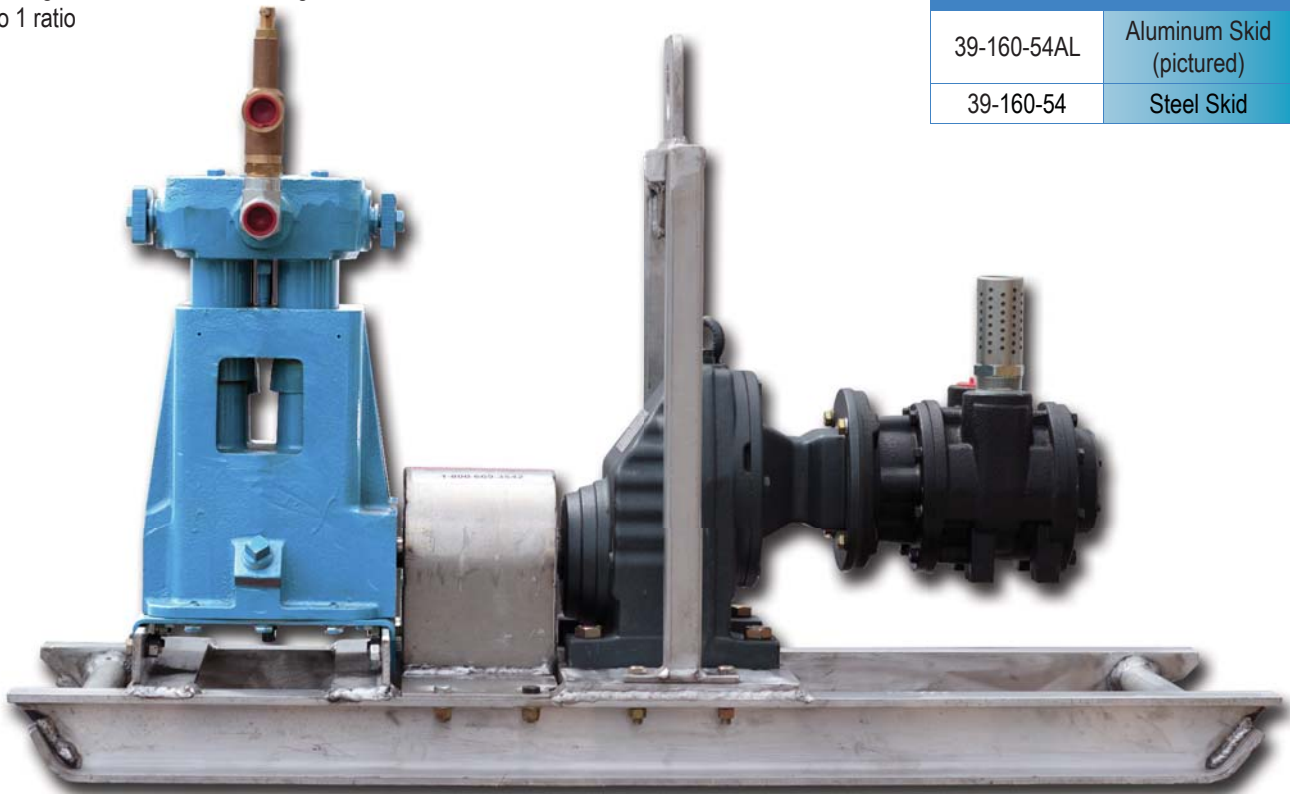
Features:

- Fluid end material of ductile iron
- Nitrided crankshaft resists corrosion
- Designed for easy, economical maintenance
- Cast iron pump case
- Special raised seat valves and hardened valve chamber available for abrasives



Globe VA10C NEMA

Motor Type	Air
Max Power:	12.8 HP/9.5kW
Torque at Max Power:	37Nm
Stall Torque:	44Nm
Min. Start Torque:	34Nm
Max Speed:	2400rpm
Mounting	Nema
Configuration:	



Part Number	Description
39-160-54AL	Aluminum Skid (pictured)
39-160-54	Steel Skid

Performance Table FMC E0413

Pump Model	Piston Diameter (in)	Displacement (GAL/REV)	Max Pressure (PSI)	Pump Capacity (GPM) @ Input Speed (RPM)				
				390 RPM	400 RPM	425RPM	450RPM	575 RPM
E0413	1.625	0.036	600	14.01	14.36	15.26	16.16	20.65



PUMPS - CUSTOM E0413 ASM

Yanmar 9hp Diesel FMC E0413 ASM

Consists of FMC E0413 pump, 9HP Yanmar diesel engine, Noram 6:1 gear reducer, skid frame, lifting bracket, relief valve, and guards.

Diesel Engine

YANMAR Model: L100V

- EPA's strict Tier 4 standards
- Low Vibration & Low Noise
- Compact, Diesel Injection Engine
- Quick and Easy Start

Gear Reducer

NORAM's 6:1 Reduction Gearbox for one inch crankshaft engines

Pump

FMC E0413

See info on E0413 pump page

Specifications:

- Standard Suction Size: 1.25" NPT
- Standard Discharge Size: 0.75" NPT
- Pump Weight (Average): 80 lbs

Features:

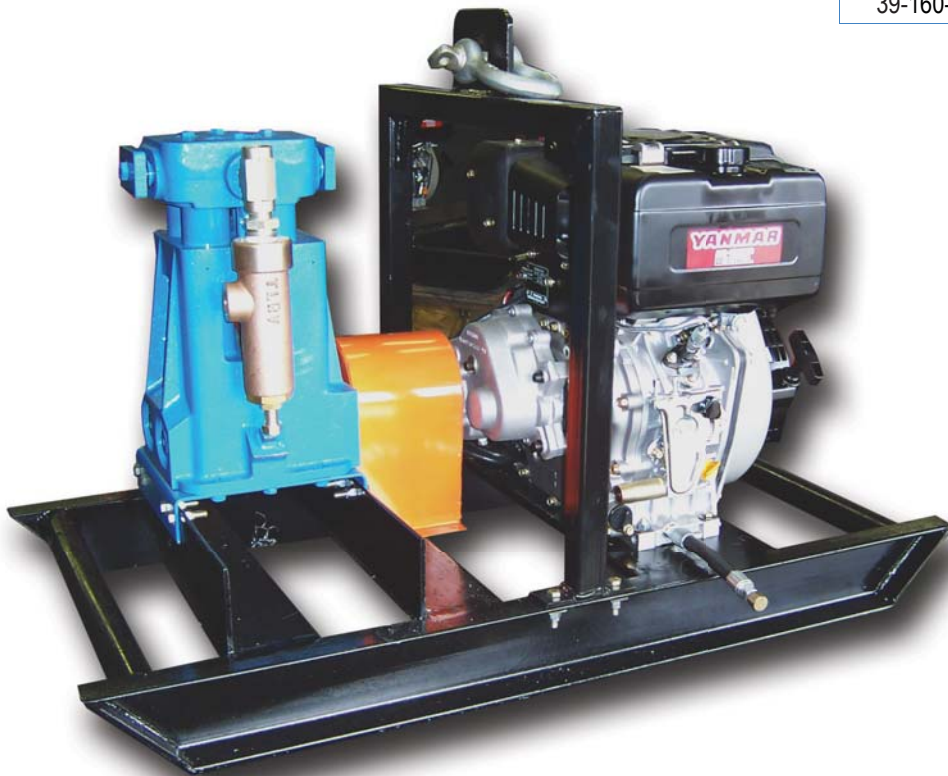
- Fluid end material of ductile iron
- Nitrided crankshaft resists corrosion
- Designed for easy, economical maintenance
- Cast iron pump case
- Special raised seat valves and hardened valve chamber available for abrasives



YANMAR Model: L100V

Engine:	Type Air Cooled 4 cycle Vertical Cylinder Diesel
Fuel:	Diesel
Number of Cylinders:	1
Total Displacement:	435 cc
Rated Speed:	3600 rpm
Net Intermittent:	9.1 Hp [6.8kW] /3600rpm
Net Continuous HP:	8.3hp [6.2kW] /3600rpm

Part Number	Description
39-160-43	Steel Skid



Performance Table FMC E0413

Pump Model	Piston Diameter (in)	Displacement (GAL/REV)	Max Pressure (PSI)	Pump Capacity (GPM) @ Input Speed (RPM)				
				390 RPM	400 RPM	425RPM	450RPM	575 RPM
E0413	1.625	0.036	600	14.01	14.36	15.26	16.16	20.65



PUMPS - CUSTOM E0413 ASM

White Hydraulic FMC E0413 ASM

Consists of FMC E0413 pump, White Drive Products HB 300 Series Motor, Noram 6:1 gear reducer, skid frame, lifting bracket, relief valve, and guards.

Hydraulic Motor

Features and Benefits

- Forced Drive Link Lubrication reduces wear and promotes longer life from motor.
- Heavy-Duty Drive Link is up to 30% stronger than competitive designs for longer life.
- Three-Zone Orbiting Valve precisely meters oil to produce exceptional volumetric efficiency.
- Rubber Energized Steel Face Seal does not extrude or melt under high pressure or high temperature.
- Standard Case Drain increases shaft seal life by reducing pressure on seal.

Gear Reducer

NORAM's 6:1 Reduction Gearbox for one inch crankshaft engines

Pump

FMC E0413

See info on E0413 pump page

Specifications:

- Standard Suction Size: 1.25" NPT
- Standard Discharge Size: 0.75" NPT
- Pump Weight (Average): 80 lbs

Features:

- Fluid end material of ductile iron
- Nitrided crankshaft resists corrosion
- Designed for easy, economical maintenance
- Cast iron pump case
- Special raised seat valves and hardened valve chamber available for abrasives

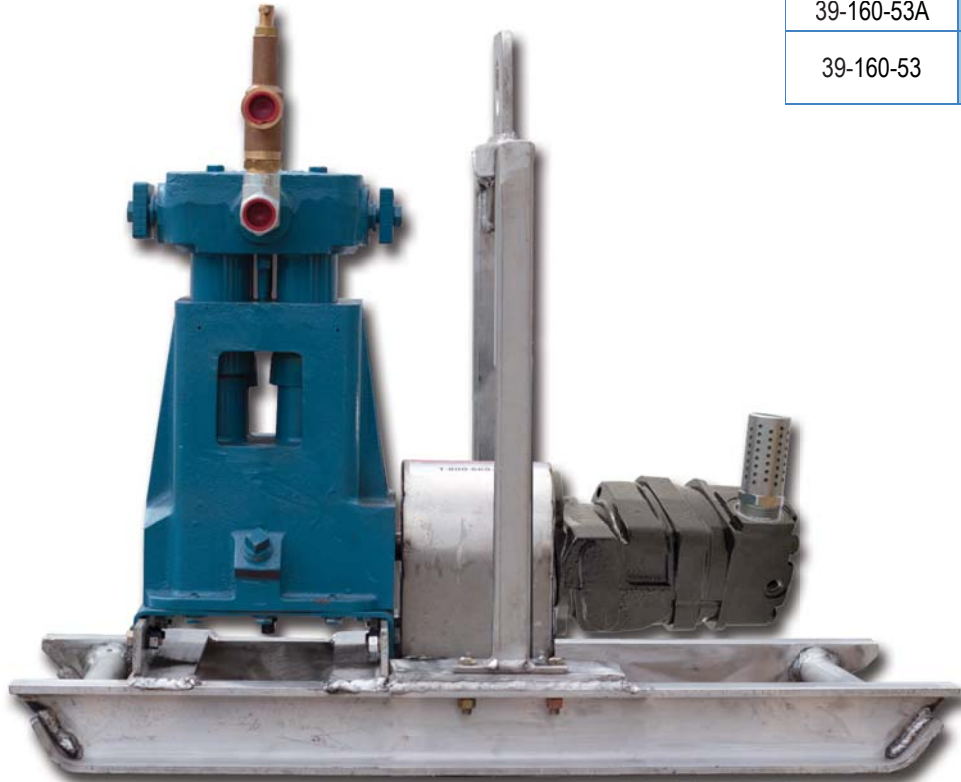


White Drive Products HB MOTORS / 300 Series

Displacements: 3.2-24.9 cid (52-409 cc)
Max Speed: 800 rpm
Max Flow: 20 gpm (76 lpm)
Max Torque: 8,400 lb-in (94.6 daNm)
Max Pressure: 3,000 psi (207 bar)

Part Number	Description
-------------	-------------

39-160-53A	Aluminum Skid
39-160-53	Steel Skid (not shown)



Performance Table FMC E0413

Pump Model	Piston Diameter (in)	Displacement (GAL/REV)	Max Pressure (PSI)	Pump Capacity (GPM) @ Input Speed (RPM)				
				390 RPM	400 RPM	425RPM	450RPM	575 RPM
E0413	1.625	0.036	600	14.01	14.36	15.26	16.16	20.65



PUMPS - CUSTOM L09-420 ASM

Globe Air Motor FMC L09-420 ASM

Consists of FMC L09-420 pump, Globe VA10C Nema Air Motor, SEW Eurodrive RX77 4.04:1 gear reducer, skid frame, lifting bracket, relief valve, and guards.

Air Motor

PERFORMANCE V10 12.8 HP/9.5 kW REVERSIBLE

- Simple & inexpensive variable speed and torque control with flow control valve and/or pressure regulator.
- Intrinsically safe for explosion proof environments.
- Can be stalled indefinitely under load. They will not over heat or burn out.
- Instantly reversible, operated with a simple control valve.
- Controllable over a wide speed range.
- Resistant to warm, dirty and damp conditions.
- Air motors are compact and light weight compared to equivalent electric motors.

Gear Reducer

SEW Eurodrive RX77

Single Stage, Foot mounted, Helical gear motor
4.04 to 1 ratio

Pump

FMC L09-420

See info on L09 pump page

Specifications:

- Standard Suction Size: 1.50" NPT
- Standard Discharge Size: 1.00" NPT
- Pump Weight (Average): 200 lbs

Features:

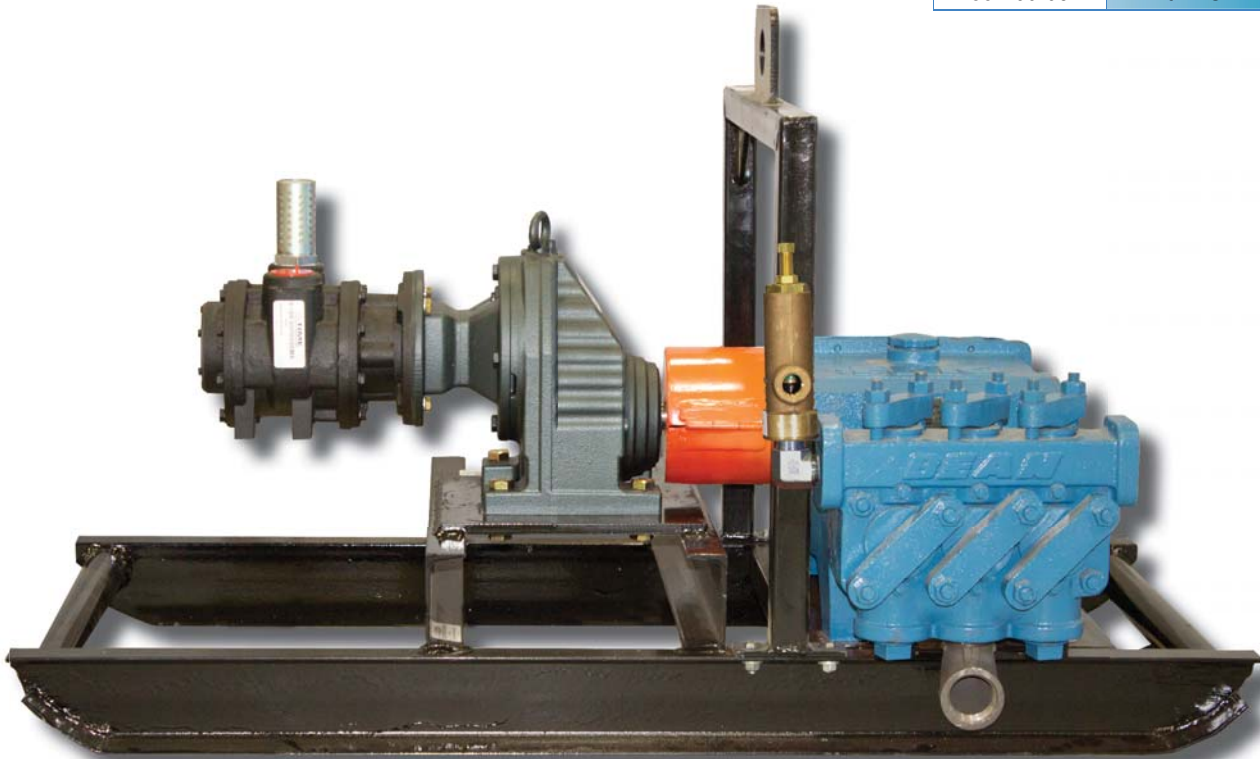
- Fluid end material of cast iron
- Pump can be easily repacked
- Ceramic cylinders
- Internal gear reduction in crankcase eliminates need for large sheaves
- Ball valves are available for pumping viscous materials such as drilling muds



Globe VA10C NEMA

Motor Type	Air
Max Power:	12.8 HP/9.5kW
Torque at Max Power:	37Nm
Stall Torque:	44Nm
Min. Start Torque:	34Nm
Max Speed:	2400rpm
Mounting	Nema
Configuration:	

Part Number	Description
39-160-65	Steel Skid



Performance Table FMC L09-420

Pump Model	Piston Diameter (in)	Displacement (GAL/REV)	Max Pressure (PSI)	Pump Capacity (GPM) @ Input Speed (RPM)				
				350 RPM	625 RPM	700 RPM	750 RPM	890 RPM
L0918	2.750	0.0589	700	11.3	20.2	22.6	24.2	28.7



PUMPS - CUSTOM L09-420 ASM

Yanmar 9HP Diesel FMC L09-420 ASM

Consists of FMC L09-420 Bean pump, 9HP Yanmar diesel engine, Noram 6:1 gear reducer, skid frame, lifting bracket, relief valve, and guards.

Diesel Engine

YANMAR Model: L100V

- Epa's strict tier 4 standards
- Low vibration & low noise
- Compact, diesel injection engine
- Quick and easy start

Gear Reducer

NORAM's 6:1 Reduction Gearbox for one inch crankshaft engines

Pump

FMC L09-420

See info on L09 pump page

Specifications:

- Standard Suction Size: 1.50" NPT
- Standard Discharge Size: 1.00" NPT
- Pump Weight (Average): 200 lbs

Features:

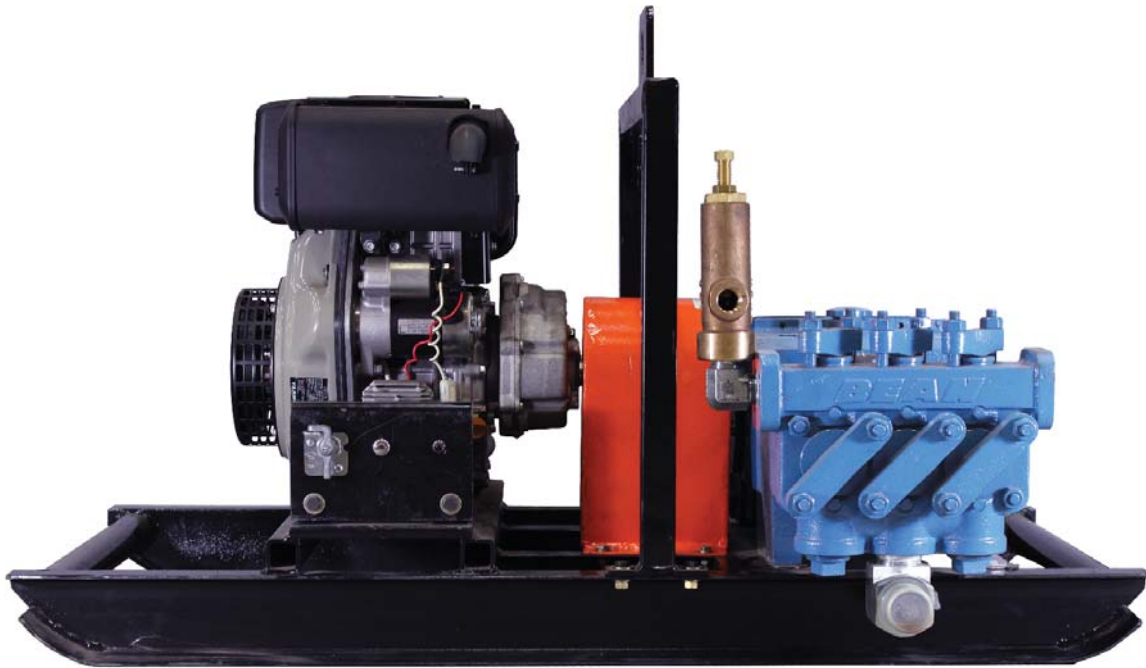
- Fluid end material of cast iron
- Pump can be easily repacked
- Ceramic cylinders
- Internal gear reduction in crankcase eliminates need for large sheaves
- Ball valves are available for pumping viscous materials such as drilling muds



YANMAR Model: L100V

Engine:	Type Air Cooled 4 cycle Vertical Cylinder Diesel
Fuel:	
Number of Cylinders:	1
Total Displacement:	435 cc
Rated Speed:	3600 rpm
Net Intermittent:	9.1 Hp [6.8kW] /3600rpm
Net Continuous HP:	8.3hp [6.2kW] /3600rpm

Part Number	Description
39-160-19	Steel Skid



Performance Table FMC L09-420

Pump Model	Piston Diameter (in)	Displacement (GAL/REV)	Max Pressure (PSI)	Pump Capacity (GPM) @ Input Speed (RPM)				
				350 RPM	625 RPM	700 RPM	750 RPM	890 RPM
L0918	2.750	0.0589	700	11.3	20.2	22.6	24.2	28.7



PUMPS - CUSTOM L09-420 ASM

Kubota 9.5HP Diesel FMC L09 ASM

Consists of FMC L09-420 Bean pump, 9.5HP Kubota diesel engine with electric start, Noram 6:1 gear reducer, 12V Deep Cell Battery, skid frame, lifting bracket, relief valve, and guards.

Diesel Engine

Kubota Model OC95-E3

- EPA's strict Tier 4 standards
- Durable Power
- Clean and Quiet Power
- Electric Start

Gear Reducer

NORAM's 6:1 Reduction Gearbox for one inch crankshaft engines

Pump

FMC L09-420

See info on L09 pump page

Specifications:

- Standard Suction Size: 1.50" NPT
- Standard Discharge Size: 1.00" NPT
- Pump Weight (Average): 200 lbs

Features:

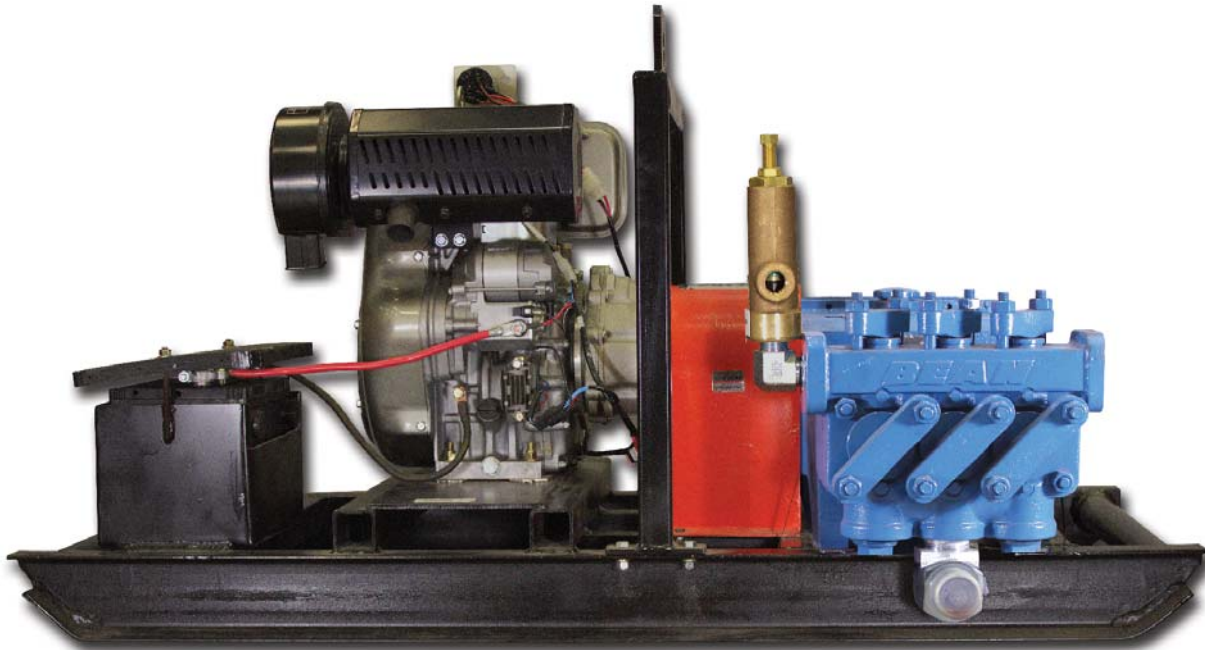
- Fluid end material of cast iron
- Pump can be easily repacked
- Ceramic cylinders
- Internal gear reduction in crankcase eliminates need for large sheaves
- Ball valves are available for pumping viscous materials such as drilling muds



Kubota Model OC95-E3

Emission Regulation Tier 4
Type 4-cycle Oil-air cooled Diesel
Number of Cylinders 1
Displacement 0.416 (25.39)
Maximum Speed 3600 rpm
Output Net Intermittent - kW: 7.0
HP: 9.4
PS: 9.5

Part Number	Description
39-160-19KBTA	Steel Skid



Performance Table FMC L09-420

Pump Model	Piston Diameter (in)	Displacement (GAL/REV)	Max Pressure (PSI)	Pump Capacity (GPM) @ Input Speed (RPM)				
				350 RPM	625 RPM	700 RPM	750 RPM	890 RPM
L0918	2.750	0.0589	700	11.3	20.2	22.6	24.2	28.7



PUMPS - CUSTOM L09-420 ASM

White Hydraulic FMC L09 ASM

Consists of FMC L09-420 Bean pump, White Drive Products HB 300 Series Motor, Noram 6:1 gear reducer, skid frame, lifting bracket, relief valve, and guards.

Hydraulic Motor

Features and Benefits

- Forced Drive Link Lubrication reduces wear and promotes longer life from motor.
- Heavy-Duty Drive Link is up to 30% stronger than
- Competitive designs for longer life.
- Three-Zone Orbiting Valve precisely meters oil to produce exceptional volumetric efficiency.
- Rubber Energized Steel Face Seal does not extrude or melt under high pressure or high temperature.
- Standard Case Drain increases shaft seal life by reducing pressure on seal.

Gear Reducer

NORAM's 6:1 Reduction Gearbox for one inch crankshaft engines

Pump

FMC L09-420

See info on L09 pump page

Specifications:

- Standard Suction Size: 1.50" NPT
- Standard Discharge Size: 1.00" NPT
- Pump Weight (Average): 200 lbs

Features:

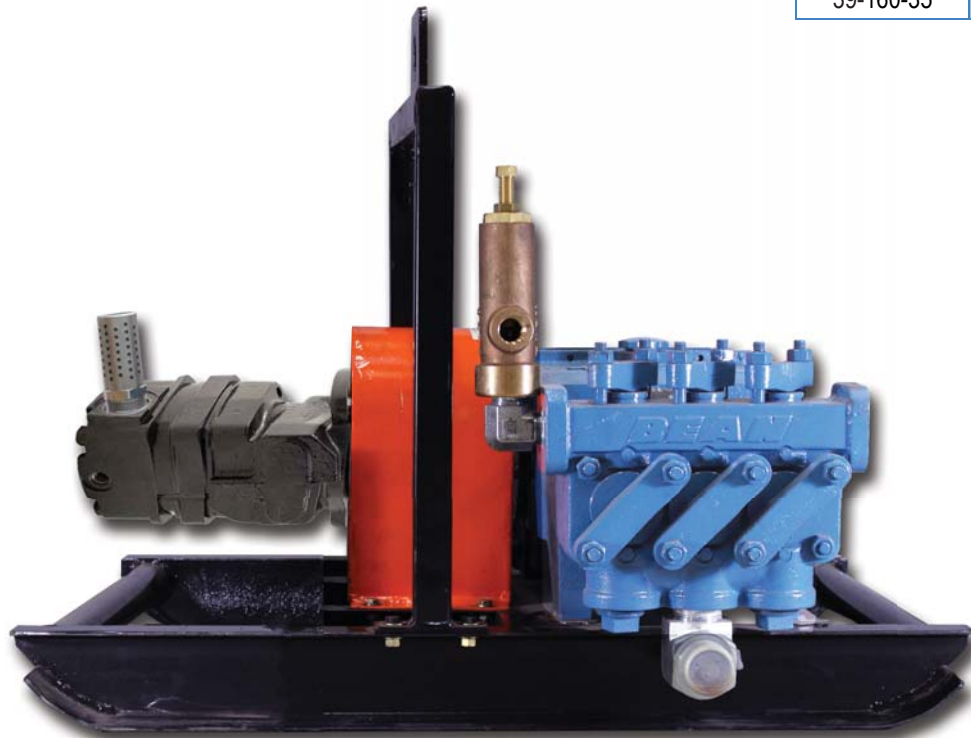
- Fluid end material of cast iron
- Pump can be easily repacked
- Ceramic cylinders
- Internal gear reduction in crankcase eliminates need for large sheaves
- Ball valves are available for pumping viscous materials such as drilling muds



White Drive Products HB MOTORS / 300 Series

Displacements: 3.2-24.9 cid (52-409 cc)
Max Speed: 800 rpm
Max Flow: 20 gpm (76 lpm)
Max Torque: 8,400 lb-in (94.6 daNm)
Max Pressure: 3,000 psi (207 bar)

Part Number	Description
39-160-35	Steel Skid



Performance Table FMC L09-420

Pump Model	Piston Diameter (in)	Displacement (GAL/REV)	Max Pressure (PSI)	Pump Capacity (GPM) @ Input Speed (RPM)				
				350 RPM	625 RPM	700 RPM	750 RPM	890 RPM
L0918	2.750	0.0589	700	11.3	20.2	22.6	24.2	28.7



PUMPS - CUSTOM W11-435 ASM

Kubota 32.8HP Diesel FMC W11-435 ASM

Consists of FMC W11-435 Bean pump, 32.8HP Kubota turbo diesel engine with electric start, NEWAGE Driveline Solutions 3.07:1 transmission, skid frame with forklift channels, lifting bracket, relief valve, and guards.

ASM certified for fly moves with an ASM weight of 1,119 lbs.

Diesel Engine

Kubota 05 Series D1105-T

- Turbocharged engine
- complies with EPA Interim Tier 4 emissions regulations
- complies with EU Stage IIIA requirements
- closed breather system
- Kubota's original E-TVCS (Three Vortex Combustion System) has been improved. The airflow, combustion chamber and piston recess were optimized to provide a 50% lower particulate matter (PM) level

Pump

FMC W11-435

See info on W11 pump page

Specifications:

- Standard Suction Size: 2.00" NPT
- Standard Discharge Size: 1.25" NPT
- Pump Weight (Average): 425 lbs

Features:

- Fluid end material of ductile iron
- Pump can be easily repacked
- Ceramic cylinders
- Internal gear reduction in crankcase eliminates need for large sheaves
- Ball valves are available for pumping viscous materials such as drilling muds



Kubota 05 Series D1105-T

Emission Regulation: Tier 4
 Type: Vertical 4-cycle liquid cooled Diesel
 Number of Cylinders: 3
 Displacement: 1.123(68.53) L (cu.in)
 Maximum Speed 300 rpm
 Output Net Intermittent - kW: 24.5
 HP: 32.8
 PS: 33.3



Part Number	Description
39-160-31-02	Steel Skid with forklift channels

ASM weight: 1,119 lbs

Performance Table FMC W11-435

Pump Model	Piston Diameter (in)	Displacement (GAL/REV)	Max Pressure (PSI)	Pump Capacity (GPM) @ Input Speed (RPM)				
				350 RPM	500 RPM	635 RPM	750 RPM	900 RPM
W1122	2.750	0.0589	1,000	20.6	29.5	37.4	44.2	53.0



PUMPS - CUSTOM W11-435 ASM

White Hydraulic FMC W11-435 ASM

Consists of FMC W11-435 Bean pump, White Drive Products HB 300 Series Motor, Noram 6:1 gear reducer, skid frame, lifting bracket, relief valve, and guards.

Hydraulic Motor

Features and Benefits

- Forced Drive Link Lubrication reduces wear and promotes longer life from motor.
- Heavy-Duty Drive Link is up to 30% stronger than competitive designs for longer life.
- Three-Zone Orbiting Valve precisely meters oil to produce exceptional volumetric efficiency.
- Rubber Energized Steel Face Seal does not extrude or melt under high pressure or high temperature.
- Standard Case Drain increases shaft seal life by reducing pressure on seal.

Gear Reducer

NORAM's 6:1 Reduction Gearbox for one inch crankshaft engines

Pump

FMC W11-435

See info on W11 pump page

Specifications:

- Standard Suction Size: 2.00" NPT
- Standard Discharge Size: 1.25" NPT
- Pump Weight (Average): 425 lbs

Features:

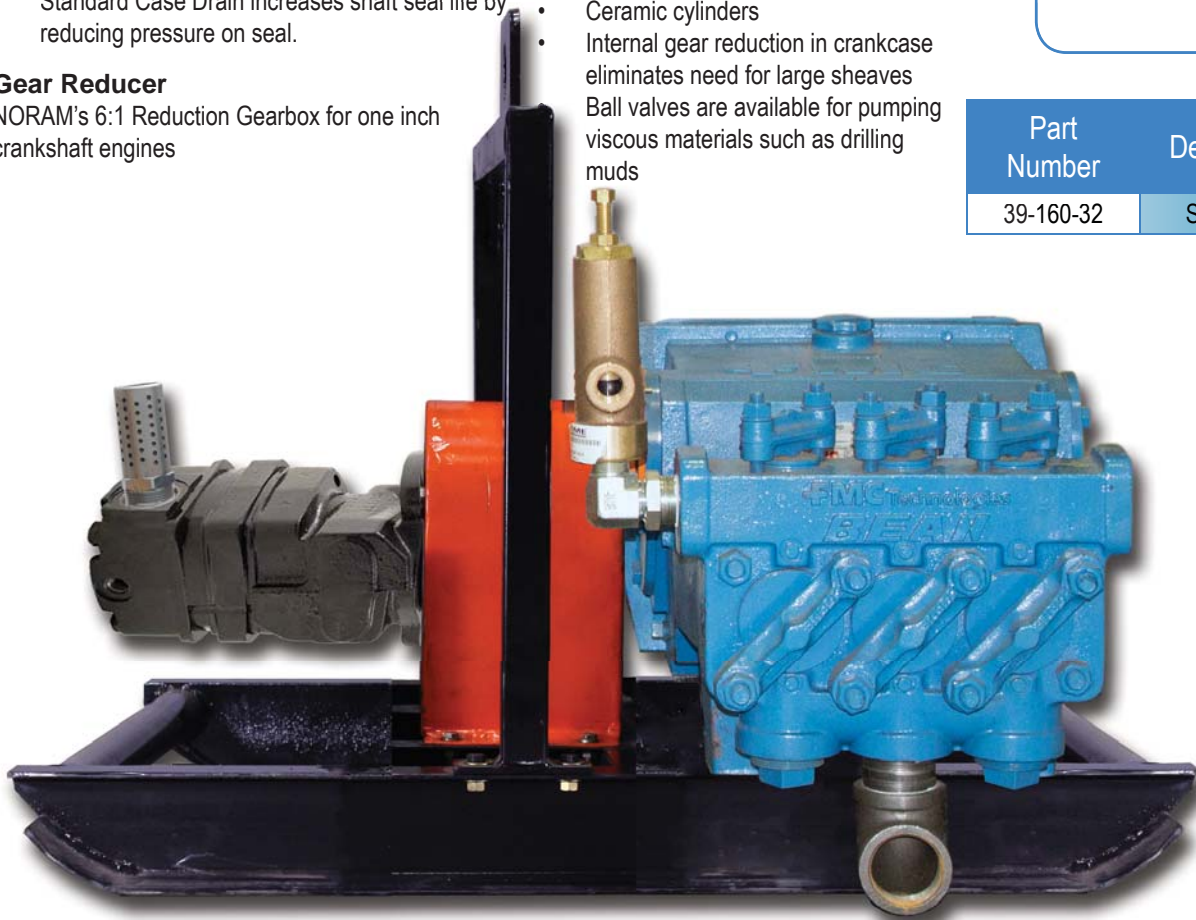
- Fluid end material of ductile iron
- Pump can be easily repacked
- Ceramic cylinders
- Internal gear reduction in crankcase eliminates need for large sheaves
- Ball valves are available for pumping viscous materials such as drilling muds



**White Drive Products
HB MOTORS / 300 Series**

Displacements: 3.2-24.9 cid (52-409 cc)
Max Speed: 800 rpm
Max Flow: 20 gpm (76 lpm)
Max Torque: 8,400 lb-in (94,6 daNm)
Max Pressure: 3,000 psi (207 bar)

Part Number	Description
39-160-32	Steel Skid



Performance Table FMC W11-435

Pump Model	Piston Diameter (in)	Displacement (GAL/REV)	Max Pressure (PSI)	Pump Capacity (GPM) @ Input Speed (RPM)				
				350 RPM	500 RPM	635 RPM	750 RPM	900 RPM
W1122	2.750	0.0589	1,000	20.6	29.5	37.4	44.2	53.0



PUMPS - Ground Stabilizing Units

Tank Pump

Steel or aluminum, the tank pump is designed to be permanently mounted on a drill. The pumping unit is comprised of a 20 litre steel or aluminum tank to which a pump is attached which injects product using a regulator and needle valve. A hydraulic hose is attached to the needle valve which is mounted on the rock drill line on the drill.

A solenoid switch may be attached to the drill to regulate the flow of product.

A 3/8" air hose with quick connect couplings is connected to the drill to provide air for the pump.

The pumping unit is uniquely configured to be used with Frac Ease to stabilize drill holes. The pumping unit allows for a constant flow of product into the water line and can be regulated for ground conditions.

Part #	Description
420-27S	Tank Pump steel tank
420-51A	Tank Pump aluminum tank
420-02	Frac Ease



Tank with Haskel Pump



The Haskel pump is used where high psi output is required. The air drive of the pump requires a minimum pressure of 25 psi (1.72 bar) to actuate the air cycling valve spool. However, 40 psi is the recommended minimum for long term reliable operation. Maximum air drive pressure is 125 psi (8.6 bar).

Pump output is 8800 psi.

Part #	Description
420-51AHP	Tank Pump with Haskel pump and aluminum tank



PUMPS - Accessories

Rubber Hose Strainer



Heavy Duty Suction Hose ASM - 2", 3" or 4" X 25' complete with grooved end. Made of heavy duty 6 ply non-wired hose, to ensure the hose will keep its shape, resist abrasion and will not crush.

Product Number	Size
DP69225	2"
DP69325	3"
DP69425	4"

Foot Valves & Strainers



Basket Strainer Without Valves

Round hole basket strainers are made from zinc plated metal. Strainers are used to allow adequate flow without allowing debris that may harm the pump. Non valved.

Product Number	Size
960-03	1-1/2"
960-05	2"
960-09	2-1/2"
960-06	3"
960-07	4"



Foot Valve and Strainer

Foot valves and strainers are made from cast iron and have a leather or rubber flapper that closes to prevent the pump from losing its prime. Ideal for suction pumps using control floats.

Product Number	Size
962-00	1-1/2"
962-01	2"
962-02	2-1/2"
962-03	3"
962-04	4"



Water Hose

MINE AIR/WATER HOSE

For mining, construction and industrial use where 400 PSI service is required. Mandrel built.

- Yellow cover with black stripe
- Reinforced with multiple layers of spiraled synthetic yarn
- Oil mist resistant
- Temperature range: -40°C to +85°C
- Sizes: ½" – 4" I.D.
- Standard length - 50' (other lengths available)



Custom Pump Cart



This cart was custom designed for a customer that needed to move the three inch Nomad pump NT80 with a weight of 100 lbs from one location to another.

We can create a custom cart or sled to move any of our pumps.

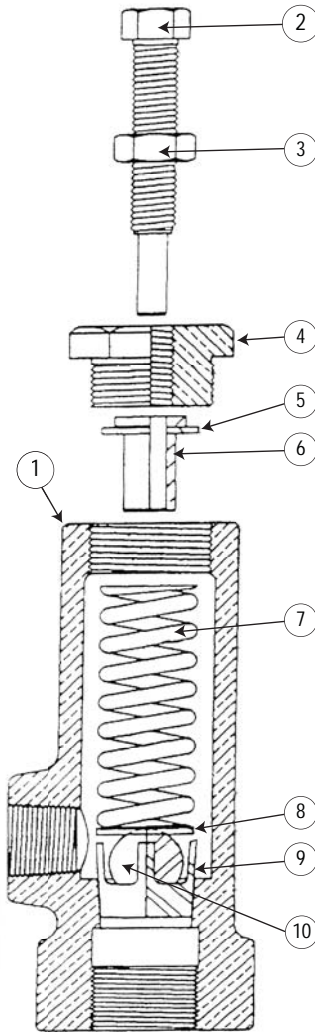
Please call us with your specifications.

Product Number	Description
NT 80 CART	Steel Pump Cart for Nomad NT 80 pump
Custom Carts and Sleds available	



PUMPS - Valves

TL Relief Valve



The TLRV TIME Ltd. Relief Valve is manufactured and assembled in Northern Ontario. This compact and robust valve has been tested to a recommended maximum hydrostatic pressure of 1200 PSI.

Dimensions: 8.5" high x 3" wide
 Outlet Port: 3/4"
 Inlet Port: 1"

Item	Description	Part #
	Relief Valve – Complete ASM	210-01
1	Relief Valve body – Bare Machined	210-02
2	Adjustment screw	210-03
3	Locking nut	210-04
4	Plug	210-05
5	Spring guide washer – top	210-06
6	Spring guide	210-07
7	Compression spring	210-08
8	Spring guide washer – bottom (not shown)	210-06
9	Stainless steel valve seat	210-10
10	15/16" stainless steel ball	1187738



Other Valves



1-1/4" Relief/Regulator Valve

- 75 GPM Capacity
- 50-2000 PSI Pressure Range
- Port Size: 1-1/4 Inch NPT
- 3 Ports
- SST Valve Seat

Repair Kit

Includes:

- packing
- o-ring
- set screw
- plunger cup
- valve seat
- valve

Part #	Description
39-1285315	1-1/4" Relief Valve
39-5256492	Repair Kit



3/4" 700 PSI Brass Relief Valve

Piston-Type Pressure Relief/Regulating Valve.

Brass, 3/4" Inlet & Pipe Connection, 700 psi max.

Bypasses excess liquid. Adjustable to maintain control of line pressure at any pressure within the valve's operating range. Selected pressure setting firmly held in place by locknut. Extra large valve passages to handle large flows.

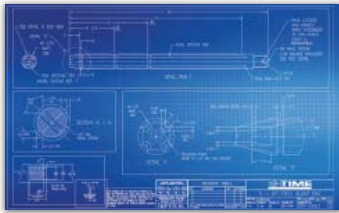
Part #
32-681534700



Manufacturing and Fabrication

Design and Innovation

The TIME team takes pride in providing customers with quality products and the absolute best service with a personal touch.



Not only does TIME distribute a number of quality product lines, we also manufacture a number of our own core products. In conjunction with our fabrication and machining capabilities, we have a team that has well over 250 years of experience in the mining, diamond drilling, and various industrial sectors. With the technical knowhow, we offer design capabilities specifically focused on new product development, innovative design, and problem solving.

We can manufacture to your requirements, or provide complete design and drafting expertise in-house.

RESPONDING TO CUSTOMER NEEDS

Our mandate is to exceed our customer's expectations.
Peter R. Henderson, President

MACHINING

TIME Limited's machining shop uses a combination of heavy duty, big and small bore lathes, CNC milling machines, CNC lathes and conventional lathes.



Here are some of our featured equipment and capabilities:



Hurco TM-18 Heavy Duty Lathe
a. Bar Capacity: 6.4 inch bar capacity
b. Turning Diameter: 25 inch max
c. Turning Length: 39.4 inch max
d. Travel: 17x, 40z inch
e. Quick Change air collect chuck system



Nakamura-Tome WT300MMYS
a. 9-axis, 2 turret multitasking machining
b. Bar Capacity: 65mm (l) and 102mm (r)
c. Turning diameter: 270mm max turning
d. Turning length: 780mm max
e. Quick Change air collect chuck system
f. Chip Blaster GV2-40 high pressure coolant system



Hurco VMX50 Milling Machine
a. 3-axis milling machine
b. Travel: 50 x 26 x 24 inch
c. Table Size: 59 x 26 inch
d. Tool Capacity: 30 CAT 50
e. Magnetic Material Holder

Other Machines include:
CNC lathes such as ROMI M27 heavy duty big bore lathe and ROMI M20 small bore lathe, as well as a host of conventional lathes.

CNC milling machines such as MAZAK Fadal VMX4020FX mill, and FIRST LC-185v-B milling machine, as well as a host of conventional milling machines



Our Newest Toys!



TIME OFFICES

We supply mine-grade products, manufacture quality products, offer design, fabrication and custom machining, as well as sourcing. We are your one-stop shop for industrial needs.

Head Office

Haileybury Tel: 705-647-8138 Fax: 705-647-9800
Sudbury Tel: 705-524-8903 Fax: 705-524-9140

Val d'Or

Tel: 819-874-8138 Fax: 819-874-8139
Timmins Tel: 705-268-8128 Fax: 705-268-5122

info@timeltd.ca www.timeltd.ca

FABRICATION

TIME Limited's welding and fabrication shop has full capabilities for custom work. Our shop includes a large plasma table, capable of cutting material up to 8' X 20', 2 10,000 lbs SMH Overhead Cranes, an AKBEND ASM-S 17 roller and a brand new, iBend CNC Hydraulic Press Brake.



Our welding shop is certified by the Canadian Welding Bureau annually.



www.timeltd.ca



Serving the Mining Industry Since 1971

Manufacturing and Fabrication



Our brand new, State of the art, 40,000 Sq. ft. Manufacturing, Fabrication and Warehousing facility

705-647-8138

www.timeltd.ca

STOCKING WAREHOUSE



TIME Limited's philosophy is to stock what our customers need. If we don't have it, and you need it on a regular basis, just ask and we will do our best to add it to our ever-growing warehouse.

We carry everything from Health and Safety to Hand tools, mining and diamond drilling products, TIME branded hoses and Gates fittings.



TIME Limited also fixes or makes your hydraulic hoses while you wait.



North America 1-800-669-3542

International +1-705-647-8138

PAGE: PU34



www.timeltd.ca



Letter from the President

TIME is committed to total customer service. We strive to keep this promise in many ways.

Total service means manufacturing to industry standards. TIME Manufacturing and Fabrication Division produces quality products, such as drill wedges, safety and grout plugs, pump assemblies, rod wrenches and custom tooling and equipment.

Total service means manufacturing to your specifications. Our shop personnel have long experience at custom machining and design engineering for the mining and drilling industry.

Total service means sourcing for the products you need at prices that are competitive and fair. We distribute only the best names in the industry such as FMC, Ridgid Tools, Gray Tools, Bestolife, Ambex, Gates Hydraulics, among others.

Total service means listening to our customers and working with them to develop new solutions, products, and innovations to make their jobs safer and more cost effective.

Our commitment to customers has resulted in innovations, new products and important changes. In recent years we have worked with our customers to develop an underground compressed air conservation system, an underground long-hole production drill, a hydraulic rod wrench, a biodegradable rod grease, and an improved camp heater to meet industry standards.

Our people are committed to help find solutions to your problems. We would be pleased to discuss how we can help you raise your production and save money.

TIME's capabilities are limited only by our customers' requirements.

*Peter R. Henderson
President*



North America 1-800-669-3542

International +1-705-647-8138

PAGE: PU35



PUMPS - Specifications

All Pumps Master Performance chart

FMC PISTON PUMPS

Model	GPM	Max Pressure	R.P.M.	Line Size		Lubrication
				Suction	Discharge	
A0309C	3	400	475	3/8" NPT	3/8" NPT	#2 grease & SAE 30
A0410C	5.3	750	500	1" NPT	3/4" NPT	1 qt SAE 30
A0411C	6.4	600	500	1" NPT	3/4" NPT	1 qt SAE 30
A0413C	9	550	500	1" NPT	3/4" NPT	1 qt SAE 30
I0410C	5.3	750	500	1" NPT	3/4" NPT	1 qt SAE 30
I0411C	6.4	600	500	1" NPT	3/4" NPT	1 qt SAE 30
I0413C	9	550	500	1" NPT	3/4" NPT	1 qt SAE 30
E0410C	8.3	750	515	1 1/2" NPT	3/4" NPT	1 qt SAE 30
E0411C	10	700	515	1 1/2" NPT	3/4" NPT	1 qt SAE 30
E0413C	14	600	515	1 1/2" NPT	3/4" NPT	1 qt SAE 30
L0614	22	1000	475	1 1/2" NPT	1" NPT	2 qt SAE 30
L0618	35	700	475	1 1/2" NPT	1" NPT	2 qt SAE 30
L0914B	12	1000	616	1 1/2" NPT	1" NPT	3 qt SAE 30
L0914D	17	1000	872	1 1/2" NPT	1" NPT	3 qt SAE 30
L0914B-CD	12	1000	616	1 1/2" NPT	1" NPT	3 qt SAE 30
L0918D	28	700	870	1 1/2" NPT	1" NPT	3 qt SAE 30
L0918B	20	700	621	1 1/2" NPT	1" NPT	3 qt SAE 30
L0918B-CD	20	700	621	1 1/2" NPT	1" NPT	3 qt SAE 30
W1118D	35	1000	890	2" NPT	1 1/4" NPT	4 qt SAE 30
W1118B	25	1000	635	2" NPT	1 1/4" NPT	4 qt SAE 30
W1122D	50	1000	850	2" NPT	1 1/4" NPT	4 qt SAE 30
W1122B	37	1000	628	2" NPT	1 1/4" NPT	4 qt SAE 30
W1122B-CD	37	1000	628	2" NPT	1 1/4" NPT	4 qt SAE 30
L1118D	50	1200	1270	2 1/2" NPT	1 1/4" NPT	4 qt SAE 30
L1118B	27	1200	686	2 1/2" NPT	1 1/4" NPT	4 qt SAE 30
L1122D	75	1000	1270	2 1/2" NPT	1 1/4" NPT	4 qt SAE 30
L1122B	40	1000	679	2 1/2" NPT	1 1/4" NPT	4 qt SAE 30

FMC PLUNGER PUMPS

Model	GPM	Max Pressure	R.P.M.	Line Size		Lubrication
				Suction	Discharge	
M0406	5.2	1250	600	1/2" NPT	1/2" NPT	1 pt SAE 30
M0606	5.1	5000	600	1-1/2" NPT	1" NPT	2 qt SAE 30
M0608	9.2	3400	600	1-1/2" NPT	1" NPT	2 qt SAE 30
M0610	14.3	2200	600	1-1/2" NPT	1" NPT	2 qt SAE 30
M0612	20.6	1500	300	1-1/2" NPT	1" NPT	2 qt SAE 30
M0810	19	3620	600	2 1/2" NPT	1 1/2" NPT	1 1/2" gal SAE 30
M0812	27.5	2520	600	2 1/2" NPT	1 1/2" NPT	1 1/2" gal SAE 30
M0814	37.5	1850	600	2 1/2" NPT	1 1/2" NPT	1 1/2" gal SAE 30
M0816	49	1420	600	2 1/2" NPT	1 1/2" NPT	1 1/2" gal SAE 30
M0818	62	1120	600	2 1/2" NPT	1 1/2" NPT	1 1/2" gal SAE 30
M1212	34.5	3400	500	3" NPT	1 1/2" NPT	3 gal SAE 30
M1214	46.5	2500	500	3" NPT	1 1/2" NPT	3 gal SAE 30
M1216	61	1900	500	3" NPT	1 1/2" NPT	3 gal SAE 30
M1218	77	1500	500	3" NPT	1 1/2" NPT	3 gal SAE 30
M1220	96	1250	500	3" NPT	2" NPT	3 gal SAE 30
M1222	115	1000	500	3" NPT	2" NPT	3 gal SAE 30
M1224	137.5	850	500	3" NPT	2" NPT	3 gal SAE 30
JB1S	100	100	3400	2" NPT	2" NPT	SAE 30
JB2S	100	200	3400	2" NPT	2" NPT	SAE 30

Pratissoli Pumps

Model	Volume		Pressure		R.P.M.	Required		Weight	Dimensions mm
	l/min	US-gpm	bar	psi		hp	kW		
KF 28	92	24.4	210	3045	1000	50	37	71	526x367x253
KF 30	106	28	200	2900	1000	55	40	71	526x367x253
KF 36	122	32.2	160	2320	800	50	37	71	526x367x253
	137	36.2	140	2050	900	50	37	71	526x367x253
	153	40	130	1900	1000	52	38.2	71	526x367x253
KF 40	170	45	110	1600	900	49	36.1	71	526x367x253

rev 4292016en



North America 1-800-669-3542
International +1-705-647-8138
PAGE: PU36

