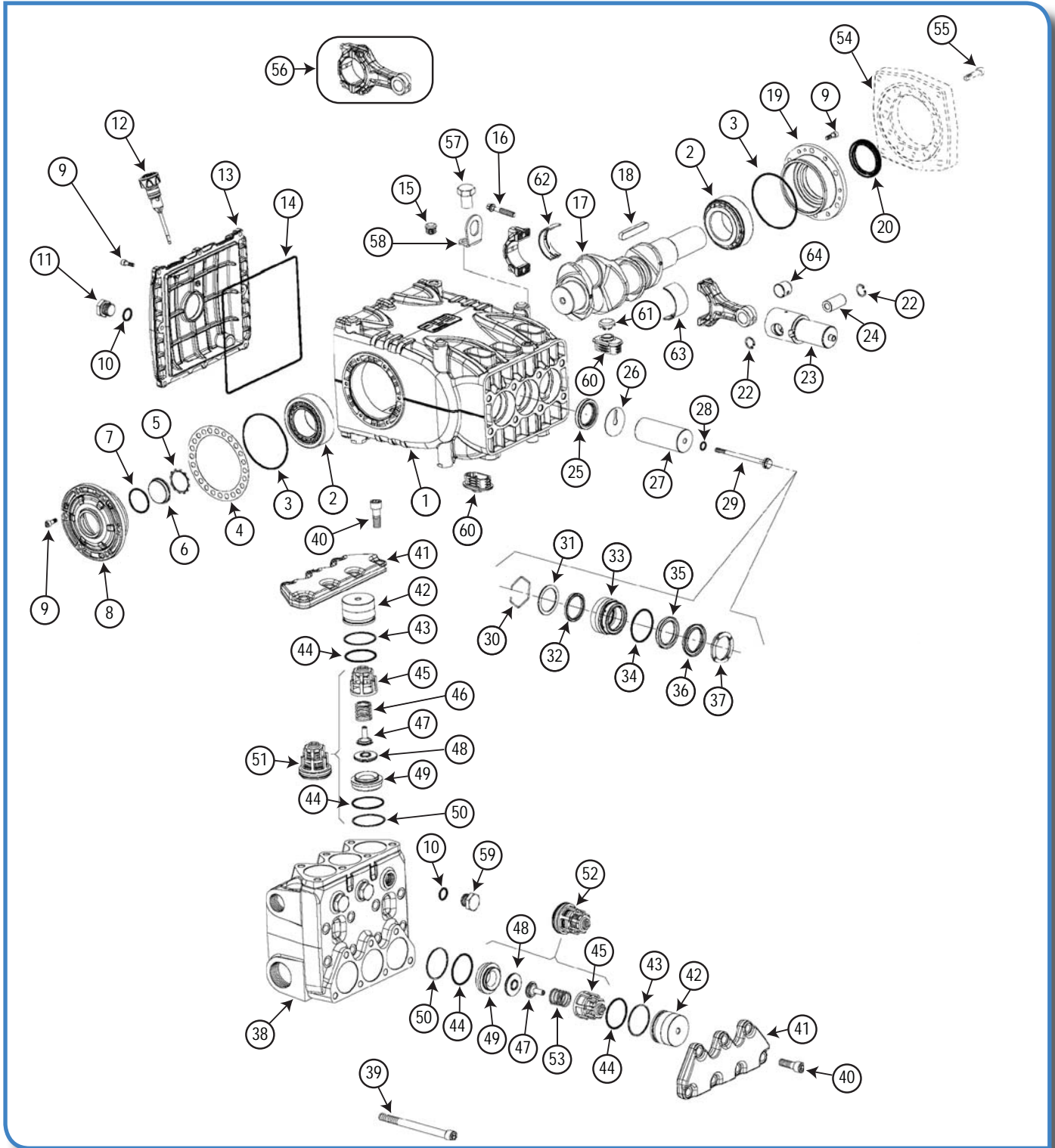


# PUMPS - Pratissoli water pumps

## Pratissoli KF Series

The Pratissoli range of triplex pumps, developed in more than 50 years of activity in the field, counts over 60 different models including flow rates up to 420 liters per minute, pressures up to 1500 bar, and powers up to 150 HP. All models are designed and produced to stand the toughest working conditions.



# Pratissoli KF Series

**KF 40  
PN-160-17**



*For other models, please contact us.*

## Construction

- Triplex high pressure plunger pump, four versions in one
- Symmetrical crankcase for easy "left to right" conversion
- Single P.T.O. shaft, d. 40
- Plunger seal design: HP seal + LH seal with cooling chamber in low pressure
- Long life Suction/Delivery in line valves with spherical profile
- Splash lubrication

## Material Quality

- Patent pending pump body in die cast aluminum
- Nickel-treated stainless steel head
- Conical shaft bearings
- Aluminum alloy connecting rods
- Forged steel crankshaft
- Crankshaft sealings in viton
- Guide pistons in surface treated cast iron
- Full ceramic plungers
- Stainless steel valves

## REPAIR KITS FOR KF40

|   |                     |                  |                  |                   |
|---|---------------------|------------------|------------------|-------------------|
| A | Plunger packing kit | KIT2020IPR       |                  |                   |
| B | Suction valves kit  | KIT2012IPR       |                  |                   |
| C | Outlet valves kit   | KIT2013IPR       |                  |                   |
| D | Complete seals kit  | KIT2021IPR       |                  |                   |
| E | Conrod bushing kit  | KIT2135IPR (STD) | KIT2154IPR(+.25) | KIT2155IPR (+.50) |

| Item | Part Number | Description                           | Kit | Qty | Item     | Part Number                           | Description | Kit | Qty |
|------|-------------|---------------------------------------|-----|-----|----------|---------------------------------------|-------------|-----|-----|
| 1    | 71010022    | Crankcase                             |     | 1   | 90277400 | Restop Ring Ø 30                      | A-D         |     | 3   |
| 2    | 91859000    | Tapered Roller Bearing 33210/Q        |     | 2   | 90281800 | Restop Ring Ø 36                      | A-D         |     | 3   |
| 3    | 90391800    | O-Ring Ø 94,92x2,62 (3375)            | D   | 2   | 90283800 | Restop Ring Ø 40                      | A-D         |     | 3   |
| 4    | 71220081    | Shim                                  |     | 1   | 90275800 | Packing Ø 28 H.P.                     | A-D         |     | 3   |
|      | 71220381    | Shim                                  |     | 1   | 90277000 | Packing Ø 30 H.P.                     | A-D         |     | 3   |
| 5    | 90075600    | Retaining Ring ZJ45                   | D   | 1   | 90282000 | Packing Ø 36 H.P.                     | A-D         |     | 3   |
| 6    | 70211801    | Sight Glass, Oil Level                |     | 1   | 90283200 | Packing Ø 40 H.P.                     | A-D         |     | 3   |
| 7    | 90387700    | O-Ring Ø 39,34x2,62 (3156)            | D   | 1   | 70100351 | Head Ring Ø 28                        | D           |     | 3   |
| 8    | 71150122    | Crankshaft End Cap                    |     | 1   | 70100451 | Head Ring Ø 30                        | D           |     | 3   |
| 9    | 99186700    | Screw M6x18 UNI5931 Z.                |     | 20  | 71100251 | Head Ring Ø 36                        | D           |     | 3   |
| 10   | 90384100    | O-Ring Ø 17,13x2,62 (3068)            | D   | 4   | 71100351 | Head Ring Ø 40                        | D           |     | 3   |
| 11   | 98218300    | Plug G 1/2" x13 - NICKEL              |     | 1   | 71121036 | Pump Head Ø 28-30                     |             |     | 1   |
| 12   | 98212000    | Dip Stick                             |     | 1   | 71125036 | Pump Head Ø 28-30 - NPT               |             |     | 1   |
| 13   | 71160022    | Crankcase Cover                       |     | 1   | 71121136 | Pump Head Ø 36                        |             |     | 1   |
| 14   | 90400000    | O-Ring Ø 215x3                        | D   | 1   | 71125136 | Pump Head Ø 36 - NPT                  |             |     | 1   |
| 15   | 98206000    | Dust Plug Ø 15                        |     | 4   | 71121236 | Pump Head Ø 40                        |             |     | 1   |
| 16   | 99313800    | Connecting Rod Bolt                   |     | 6   | 71125236 | Pump Head Ø 40 - NPT                  |             |     | 1   |
| 17   | 71020035    | Crankshaft                            |     | 1   | 99448000 | Screw M12x150 UNI5931                 |             |     | 8   |
| 18   | 91500000    | Drive Key                             |     | 1   | 99429500 | Screw M12x35 UNI5931                  |             |     | 14  |
| 19   | 71150022    | Crankshaft End Cap PTO                |     | 1   | 71210136 | Valve Cover Plate                     |             |     | 2   |
| 20   | 90170000    | Crankshaft Oil Seal Ø 50x65x8 - VITON | D   | 1   | 71211170 | Valve Plug                            |             |     | 6   |
| 22   | 90060600    | Retaining Ring Ø 20 UNI7437           |     | 6   | 90525000 | Anti-extrusion Ring Ø 50,9x55x1,5     | D           |     | 6   |
| 23   | 71050015    | Plunger Guide                         |     | 3   | 90388900 | O-Ring Ø 48,89x2,62 (3193)            | D           |     | 12  |
| 24   | 97743000    | Wrist Pin Ø 20x38                     |     | 3   | 36204551 | Valve Cage                            |             |     | 6   |
| 25   | 90167800    | Plunger Oil Seal Ø 38x52x7            | D   | 3   | 94755000 | Spring Ø 25,2x26                      |             |     | 3   |
| 26   | 96714000    | Flinger Washer Ø 10x50x1              |     | 3   | 36208651 | Valve Guide                           |             |     | 6   |
| 27   | 71040309    | Plunger Ø 30                          |     | 3   | 36208502 | Valve Poppet                          |             |     | 6   |
|      | 71040409    | Plunger Ø 36                          |     | 3   | 36204156 | Valve Seat                            |             |     | 6   |
|      | 71040509    | Plunger Ø 40                          |     | 3   | 90524000 | Anti-extrusion Ring Ø 49,5x54x1,5     | D           |     | 6   |
|      | 71040609    | Plunger Ø 28                          |     | 3   | 36713701 | Delivery Valve ASM                    | C           |     | 3   |
| 28   | 90367100    | O-Ring Ø 11x2 (11020) - 90Sh.         | D   | 3   | 36713601 | Inlet Valve ASM                       | B           |     | 3   |
| 29   | 71219566    | Plunger Bolt                          |     | 3   | 94754000 | Spring Ø 24,7x27                      |             |     | 3   |
| 30   | 90079700    | Retaining Ring Ø 52 UNI7437           |     | 3   | 10067720 | Hydraulic Flange                      |             |     | 1   |
| 31   | 71217670    | Packing Washer Ø 28                   |     | 3   | 99309900 | Screw M8x35 UNI5931 Z.                |             |     | 6   |
|      | 71217770    | Packing Washer Ø 30                   |     | 3   | 71030701 | Connecting Rod Complete               |             |     | 3   |
|      | 71218070    | Packing Washer Ø 36                   |     | 3   | 99512000 | Screw M16x1,5x25 UNI5740 8.8 Z.       |             |     | 1   |
|      | 71218270    | Packing Washer Ø 40                   |     | 3   | 71223074 | Lifting Point                         |             |     | 1   |
| 32   | 90275000    | Packing Ø 28 L.P.                     | A-D | 3   | 98218100 | Plug G 1/2" x13 - SS                  |             |     | 3   |
|      | 90276000    | Packing Ø 30 L.P.                     | A-D | 3   | 71225851 | Plunger Plug                          |             |     | 6   |
|      | 90280000    | Packing Ø 36 L.P.                     | A-D | 3   | 71225951 | Dust Cap                              |             |     | 3   |
|      | 90283000    | Packing Ø 40 L.P.                     | A-D | 3   | 90924300 | Connecting Rod Bushing - Inf.         | E           |     | 3   |
| 33   | 71215670    | Packing Support Ø 28                  |     | 3   | 90924400 | Connecting Rod Bushing +0.25- Inf.    | E           |     | 3   |
|      | 71215370    | Packing Support Ø 30                  |     | 3   | 90924500 | Connecting Rod Bushing +0.50 - Inf.   | E           |     | 3   |
|      | 71215470    | Packing Support Ø 36                  |     | 3   | 90924000 | Connecting Rod Bushing - Sup.         | E           |     | 3   |
|      | 71215570    | Packing Support Ø 40                  |     | 3   | 90924100 | Connecting Rod Bushing +0.25 - Sup.   | E           |     | 3   |
| 34   | 90389100    | O-Ring Ø 52,07x2,62                   | A-D | 3   | 90924200 | Connecting Rod Bushing Ila +0.5-0Sup. | E           |     | 3   |
| 35   | 90275500    | Restop Ring Ø 28                      | A-D | 3   | 90911000 | Wrist Pin Bushing                     |             |     | 3   |

