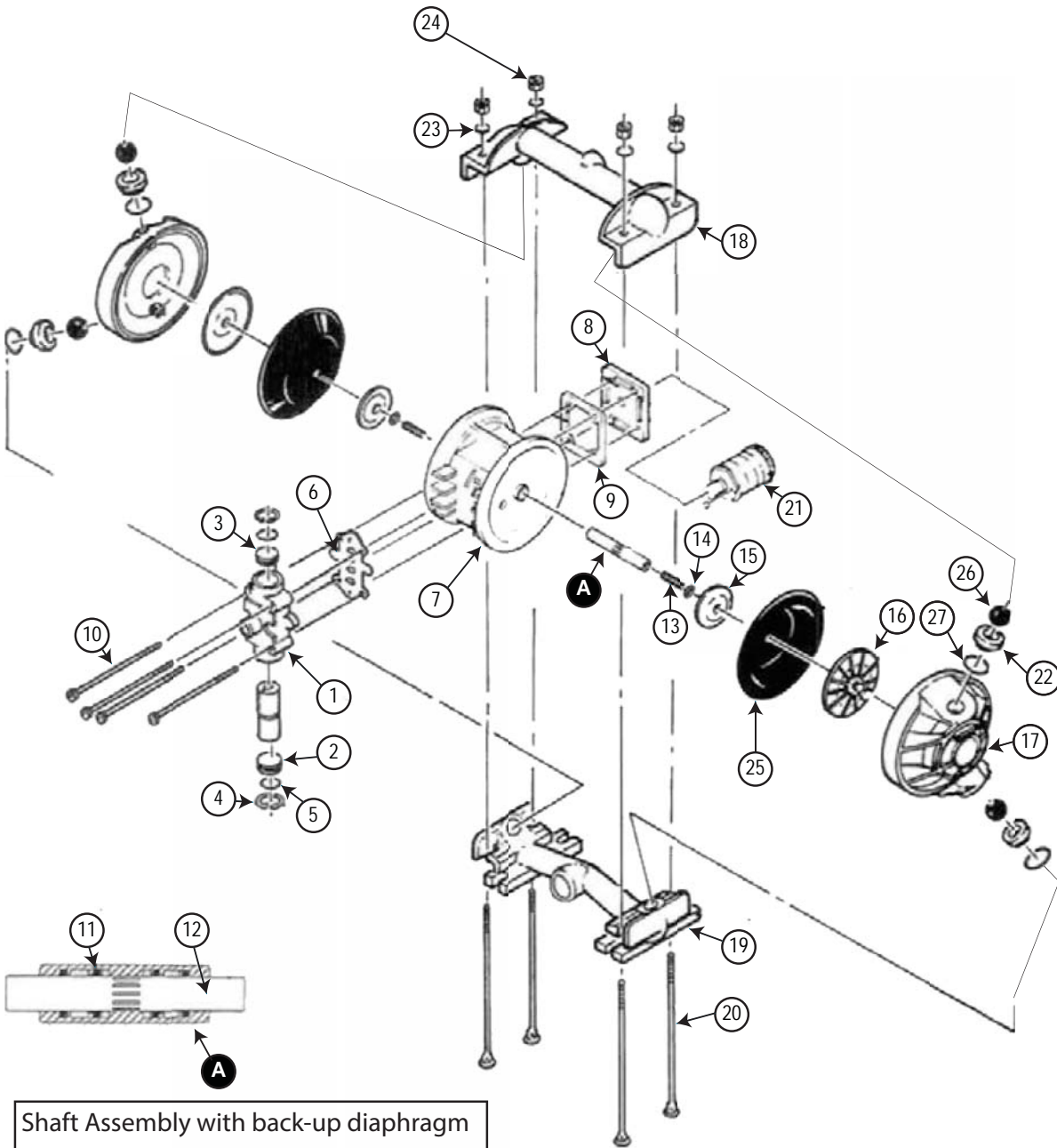
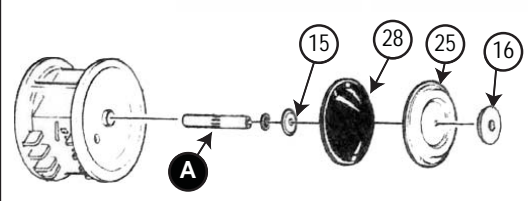


PUMPS - NOMAD Diaphragm pumps

NTG25 Parts Diagram



Shaft Assembly with back-up diaphragm



PUMPS - NOMAD NTG25



NTG25 1" Aluminum Diaphragm Pump Assemblies

Part Number	Description
25-2693	Includes Neoprene Diaphragm, Valve Ball and Valve Seat
25-2696	Includes Buna Diaphragm, Valve Ball and Valve Seat
25-2697	Includes Nordel Diaphragm, Valve Ball and Valve Seat
25-26964	Includes Hytrel Diaphragm, Valve Ball and Valve Seat
25-2698	Includes Viton Diaphragm, Valve Ball and Valve Seat
25-2699	Includes Santoprene Diaphragm, Valve Ball and Valve Seat
25-2691	Includes PTFE Diaphragm, Valve Ball and Valve Seat

Air Inlet	6 mm (1/4")
Inlet	25 mm (1")
Outlet	19 mm (3/4")
Suction Lift	5.18 m Dry (17') 9.45 m Wet (31')
Max. Flow Rate	132 lpm (35 gpm)
Max. Size Solids	3.2 mm (1/8")
Height	279 mm (11.0")
Width	267 mm (10.5")
Depth	185 mm (7.3")

H2O flow rates listed

Caution: Do not exceed 8.6 bar (125 psig) air supply pressure.

PTFE Diaphragms: reduce flow by 25%

Item	Description	Qty	Part Number
1	Air Valve ASM	1	N02-2000-07
	Air Valve ASM Gold	1	N02-2012-07
2	Air Valve End Cap w/out Guide (Bottom)	1	N02-2331-23
3	Air Valve End Cap w/ Guide (Top)	1	N02-2301-23
4	Air Valve Snap Ring	2	N02-2650-03
5	Air Valve Cap O-ring	2	N02320052200
6	Air Valve Gasket	1	N02-2600-52
7	Center Section	1	N02315120225
8	Muffler Plate	1	N02-3180-20
9	Muffler Plate Gasket	1	N02350052500
10	Air Valve Cap Screw 1/4" - 20 x 2"	4	N02-6000-08
10a	Hex Head Nut 1/4" -20 (Not Shown)	4	N02-6400-08
11	Center Block TRACKER™ Seal	4	N02321077225
12	Shaft	1	N0238200307
13	Shaft Stud	2	N02-6150-08
14	Disc Spring	2	N02-6802-08
15	Inner Piston	2	N02-3750-01
16	Outer Piston	2	N02-4601-01
17	Liquid Chamber	2	N02-5000-01
18	Discharge Manifold	1	N02-5020-01
19	Inlet Manifold	1	N02-5080-01
20	Manifold Bolt 3/6" -16 x 8-1/2"	4	N02-6080-08
21	Muffler	1	N02-3510-99
22	Valve Seat - Aluminum	4	N02-1120-01
23	Manifold Bolt Washer	4	N02-6720-08
24	Manifold Bolt Nut 3/8" - 16	4	N02-6430-08
25	Diaphragm - Neoprene	2	N02-1010-51
	Diaphragm - Buna	2	N02-1010-52
	Diaphragm - Viton ®	2	N02-1010-53
	Diaphragm - Nordel ®	2	N02-1010-54
	Diaphragm - PTFE	2	N02-1010-55
	Diaphragm - Hytrel ®	2	N02-1010-56
	Diaphragm - Santoprene ®	2	N02-1010-58
	Diaphragm - PTFE / BUNA	2	N02-1060-52
26	Valve Ball - Neoprene	4	N02-1080-51
	Valve Ball - Buna	4	N02-1080-52
	Valve Ball - Viton ®	4	N02-1080-53
	Valve Ball - Nordel ®	4	N02-1080-54
	Valve Ball - PTFE	4	N02-1080-55
	Valve Ball - Hytrel ®	4	N02-1080-56
	Valve Ball - Santoprene ®	4	N02-1080-58
	Back-up Diaphragm - Hytrel ®	2	N02-1060-56
27	Valve Seat O-ring - Neoprene	4	N02-1200-51
	Valve Seat O-ring - Buna	4	N02-1200-52
	Valve Seat O-ring - Viton ®	4	N02-1200-53
	Valve Seat O-ring - Nordel ®	4	N02-1200-54
	Valve Seat O-ring - PTFE	4	N02-1200-55
	Valve Seat O-ring - Hytrel ®	4	N02-1200-56
	Valve Seat O-ring - Santoprene ®	4	N02-1200-58
	Back-up Diaphragm - Hytrel ®	2	N02-1060-56

