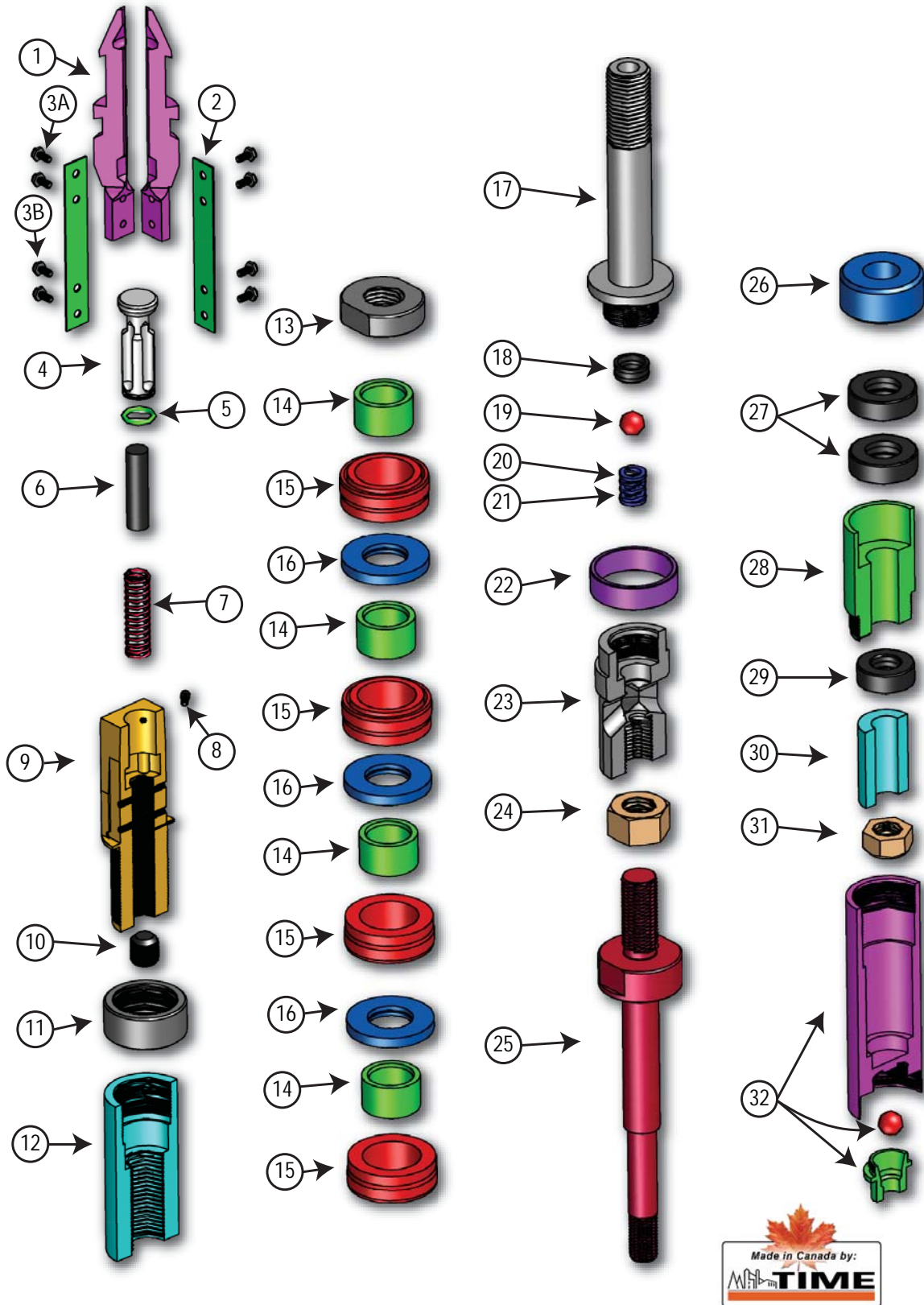


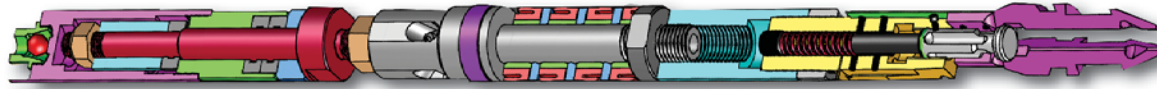
Drilling & Exploration - Q/L Head Assy

Quad Latch Head Assembly



Drilling & Exploration - Q/L Head Assy

Quad Latch Head Assembly



Item	Description	Part Numbers for Each Size		
		B	N	H
	Head Assembly	92-45-302	92-45-402	92-45-502
1	Quad Latch Finger	92-44-301	92-44-401	92-44-501
2	Leaf Spring	92-44-305	92-44-405	92-44-505
3A	Cap Screw - Finger to Spring	92-44-326	92-44-526	92-44-526
3A	Cap Screw - Spring to Body	92-44-326B	92-44-526	92-44-526
4	Piston	92-44-302	92-44-402	92-44-502
5	O-Ring	N/A	568-117-90	568-119-90
6	Push Rod	92-44-306	92-44-406	92-44-506
7	Compression Spring	92-44-318	92-44-418	92-44-518
8	Stop Screw	92-44-504	92-44-404	92-44-504
9	Head Base	92-44-303	92-45-403	92-44-503
10	Set Screw	92-44-327	92-44-427	92-44-527
11	Lock Nut, Adapter	92-44-307	92-45-407	92-44-507
12	Adapter, Base Shaft	92-45-308	92-45-408	92-45-508
13	Lock Nut, Shaft	92-45-309	92-45-409	92-45-509
14	Spacer, Pump-In Seal	N/A	92-45-410	92-44-510
15	Seal, Pump-In	90-29-353	92-44-453	92-44-553
16	Washer, Thrust	92-45-311	92-45-411	92-45-511
17	Shaft, Pump-In	92-45-313	92-45-413	92-45-513
18	Bushing	90-29-380	90-29-381	90-29-381
19	Ball, Water Retention	90-21-421	90-21-421	90-21-421
20	Spring, Water Retention, Green, Light	N/A	90-29-382	90-29-382
21	Spring, Water Retention, Blue, Medium	N/A	90-29-383	90-29-383
22	Landing Shoulder	90-21-309-2	90-21-409-2	90-21-509-2
23	Latch Body, Lower	90-21-309-3	90-21-409-3	90-21-509-3
24	Jam Nut	14NHZG5	18NHZG5	20NHZG5
25	Spindle	90-21-311	90-21-411	90-21-511
26	Spacer, Valve Replacement	92-45-314	92-45-414	92-45-514
27	Bearing, Spindle, Upper	90-21-314	90-21-414	90-21-514
28	Bushing, Spindle	90-21-315	90-21-415	90-21-515
29	Bearing, Hanger	90-21-314	90-21-424	90-21-414
30	Spacer, Spring Replacement	92-45-318	92-45-418	92-45-518
31	Lock Nut	10NSZG5	12NSZG5	16NSZG
32	Assembly, Inner Tube Cap	90-21-319	90-21-419	90-21-519

North America 1-800-669-3542
International +1-705-647-8138

PAGE: DE13



www.timeltd.ca