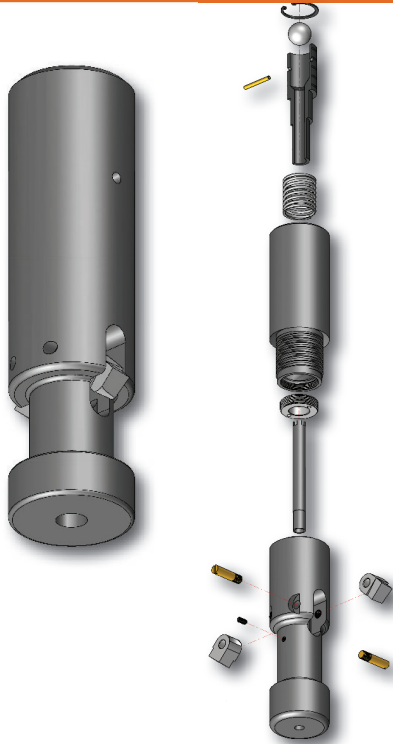


Drilling & Exploration - Core Barrels Tools

Casing Cutters



Description	Part Numbers for Each Size			
	BW CSG	NW CSG	HW CSG	PW CSG
CASING CUTTER ASM	92-10-350	92-10-450	92-10-550	92-10-650
BODY	92-10-351	92-10-451	92-10-551	92-10-551
LUG	92-10-352	92-10-452	92-10-552	92-10-652
CUTTER PIN	92-10-354	92-10-454	92-10-554	92-10-554
WATER TUBE	92-10-355	92-10-455	N/A	N/A
SPRING REST	92-10-356	92-10-456	N/A	N/A
PLUNGER CASE	92-10-357	92-10-457	N/A	93-56-522
SPRING	92-10-358	92-10-458	92-10-458	92-10-458
PLUNGER	92-10-359	92-10-459	92-10-459	92-10-459
PIN	92-10-360	92-10-460	92-10-460	92-10-460
BALL	39-1187738	39-1101419	39-1101419	39-1101419
RETAINING RING	92-10-362	92-10-462	92-10-462	92-10-462
SET SCREW	04004SSCP	04004SSCP	N/A	N/A

This tool is designed with a one-direction bearing system, allowing for the support of inner tubes at the collar of the rods. The standard design will hold the inner tube in the puller to prevent it from dropping down the hole. The design with the spear point, provides the ability to attach the overshot to it, in turn allowing for the extended inner tube to be pulled out of the rods.

Inner Tube Puller

Description	Part Number
With Spear - BW/L	92-20-399
With Spear - NW/L	92-20-499
With Spear - HW/L	92-20-599
With Spear - PW/L	92-20-699
No Spear - BW/L	92-20-398
No Spear - NW/L	92-20-498
No Spear - HW/L	92-20-598
No Spear - PW/L	92-20-698



This tool is designed to firmly grip and support the inner tube, allowing for the removal of extended inner tubes.

Inner Tube Pliers

Part Number	Description
92-1006	Pliers Inner Tube

