

NOMAD NTG25

NTG25 1" ALUMINUM DIAPHRAGM PUMP

ITEM #	PART #	QTY	DESCRIPTION	ITEM #	PART #	QTY	DESCRIPTION
NTG25 1" ALUMINUM DIAPHRAGM PUMP ASSEMBLIES				20	N02-6080-08	4	MANIFOLD BOLT 3/6" -16 X 8-1/2"
	25-2693		INCLUDES NEOPRENE DIAPHRAGM, VALVE BALL AND VALVE SEAT	21	N02-3510-99	1	MUFFLER
	25-2696		INCLUDES BUNA DIAPHRAGM, VALVE BALL AND VALVE SEAT	22	N02-1120-01	4	VALVE SEAT - ALUMINUM
	25-2697		INCLUDES NORDEL DIAPHRAGM, VALVE BALL AND VALVE SEAT	23	N02-6720-08	4	MANIFOLD BOLT WASHER
	25-26964		INCLUDES HYTREL DIAPHRAGM, VALVE BALL AND VALVE SEAT	24	N02-6430-08	4	MANIFOLD BOLT NUT 3/8" - 16
	25-2698		INCLUDES VITON DIAPHRAGM, VALVE BALL AND VALVE SEAT	25	N02-1010-51	2	DIAPHRAGM - NEOPRENE
	25-2699		INCLUDES SANTOPRENE DIAPHRAGM, VALVE BALL AND VALVE SEAT		N02-1010-52	2	DIAPHRAGM - BUNA
	25-2691		INCLUDES PTFE DIAPHRAGM, VALVE BALL AND VALVE SEAT		N02-1010-53	2	DIAPHRAGM - VITON ®
1	N02-2012-07	1	AIR VALVE ASM GOLD		N02-1010-54	2	DIAPHRAGM - NORDEL ®
2	N02-2331-23	1	AIR VALVE END CAP W/OUT GUIDE (BOTTOM)		N02-1010-55	2	DIAPHRAGM - PTFE
3	N02-2301-23	1	AIR VALVE END CAP W/ GUIDE (TOP)		N02-1010-56	2	DIAPHRAGM - HYTREL ®
4	N02-2650-03	2	AIR VALVE SNAP RING		N02-1010-58	2	DIAPHRAGM - SANTOPRENE ®
5	N02320052200	2	AIR VALVE CAP O-RING	26	N02-1080-51	4	VALVE BALL - NEOPRENE
6	N02-2600-52	1	AIR VALVE GASKET		N02-1080-52	4	VALVE BALL - BUNA
7	N02315120225	1	CENTER SECTION		N02-1080-53	4	VALVE BALL - VITON ®
8	N02-3180-20	1	MUFFLER PLATE		N02-1080-54	4	VALVE BALL - NORDEL ®
9	N02350052500	1	MUFFLER PLATE GASKET		N02-1080-55	4	VALVE BALL - PTFE
10	N02-6000-08	4	AIR VALVE CAP SCREW 1/4" - 20 X 2"		N02-1080-56	4	VALVE BALL - HYTREL ®
10a	N02-6400-08	4	HEX HEAD NUT 1/4" -20 (NOT SHOWN)		N02-1080-58	4	VALVE BALL - SANTOPRENE ®
11	N02321077225	4	CENTER BLOCK TRACKER™ SEAL	27	N02-1200-51	4	VALVE SEAT O-RING - NEOPRENE
12	N0238200307	1	SHAFT		N02-1200-52	4	VALVE SEAT O-RING - BUNA
13	N02-6150-08	2	SHAFT STUD		N02-1200-53	4	VALVE SEAT O-RING - VITON ®
14	N02-6802-08	2	DISC SPRING		N02-1200-54	4	VALVE SEAT O-RING - NORDEL ®
15	N02-3750-01	2	INNER PISTON		N02-1200-55	4	VALVE SEAT O-RING - PTFE
16	N02-4601-01	2	OUTER PISTON		N02-1200-56	4	VALVE SEAT O-RING - HYTREL ®
17	N02-5000-01	2	LIQUID CHAMBER		N02-1200-58	4	VALVE SEAT O-RING - SANTOPRENE ®
18	N02-5021-01	1	DISCHARGE MANIFOLD	28	N02-1060-52	2	BACK-UP DIAPHRAGM - PTFE / BUNA
19	N02-5080-01	1	INLET MANIFOLD		N02-1060-56	2	BACK-UP DIAPHRAGM - HYTREL ®

Features:

Air Inlet	6 mm (1/4")
Inlet	25 mm (1")
Outlet	19 mm (3/4")
Suction Lift	5.18 m Dry (17')
	9.45 m Wet (31')
Max. Flow Rate	132 lpm (35 gpm)
Max. Size Solids	3.2 mm (1/8")
Height	279 mm (11.0")
Width	267 mm (10.5")
Depth	185 mm (7.3")

H2O flow rates listed
Caution: Do not exceed 8.6 bar
(125 psig) air supply pressure.

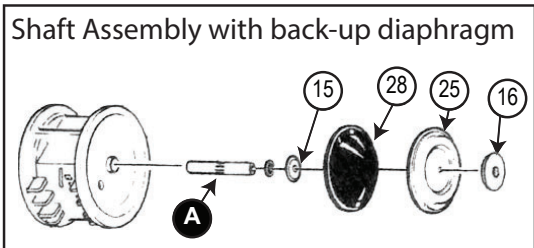
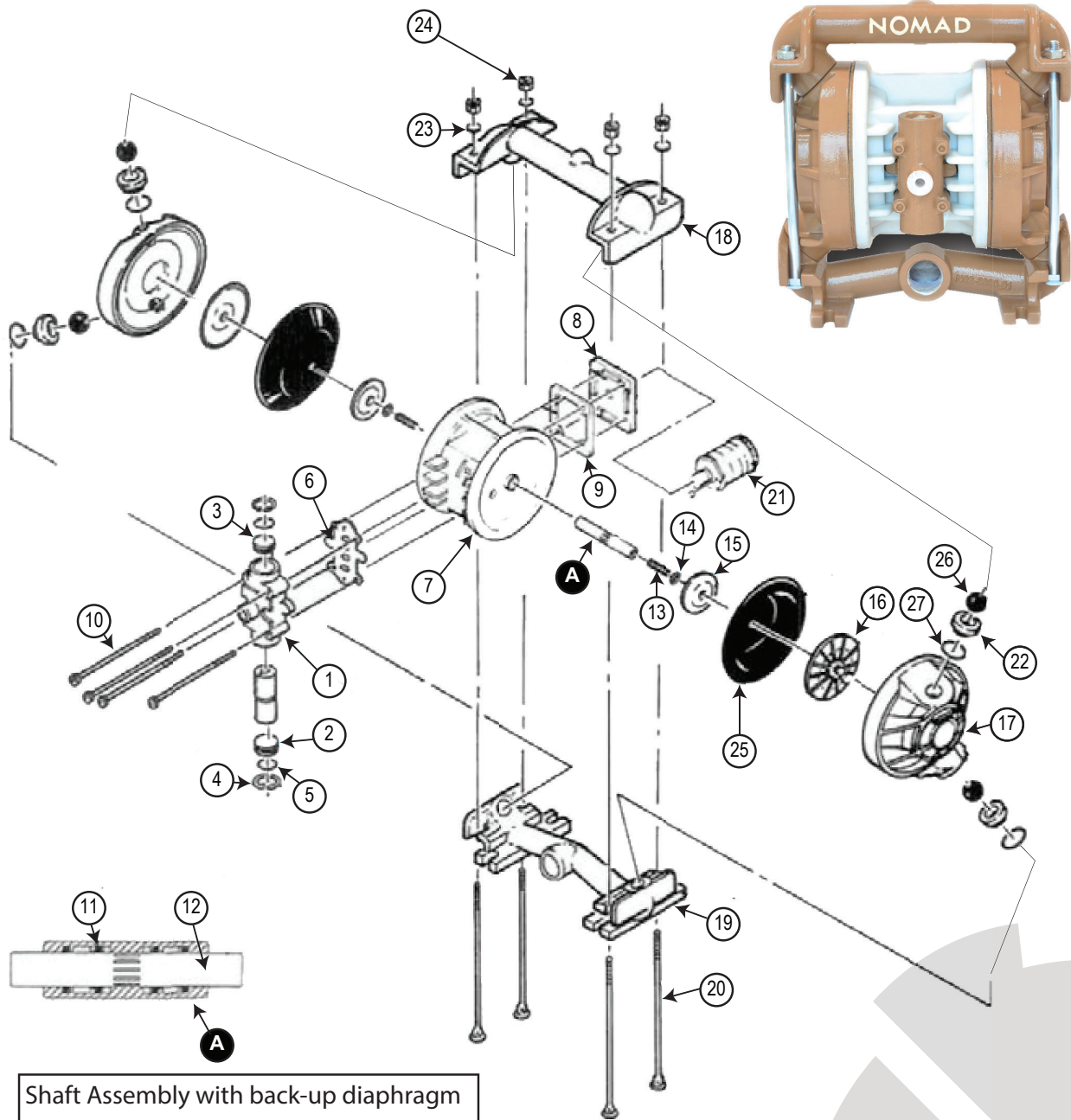
**PTFE Diaphragms: reduce
flow by 25%**



800.669.3542 | info@timeltd.ca

NOMAD NTG25

NTG25 1" ALUMINUM DIAPHRAGM PUMP



800.669.3542 | info@timeltd.ca

NOMAD NTG40

NTG40 1.5" ALUMINUM DIAPHRAGM PUMP

ITEM #	PART #	QTY	DESCRIPTION	ITEM #	PART #	QTY	DESCRIPTION
NTG40 1-1/2" ALUMINUM DIAPHRAGM PUMP ASSEMBLIES				23	N04-3510-99	1	MUFFLER
	40-2693		INCLUDES NEOPRENE DIAPHRAGM, VALVE BALL AND VALVE SEAT	24	N0438000307	1	SHAFT
	40-2696		INCLUDES BUNA DIAPHRAGM, VALVE BALL AND VALVE SEAT		N0438200307	1	SHAFT - PTFE
	40-2697		INCLUDES NORDEL DIAPHRAGM, VALVE BALL AND VALVE SEAT	25	N04-6150-08	2	SHAFT STUD
	40-26964		INCLUDES HYTREL DIAPHRAGM, VALVE BALL AND VALVE SEAT		N04-6152-08	2	SHAFT STUD - PTFE
	40-2698		INCLUDES VITON DIAPHRAGM, VALVE BALL AND VALVE SEAT	26	N04-4552-01	2	OUTER PISTON
	40-2699		INCLUDES SANTOPRENE DIAPHRAGM, VALVE BALL AND VALVE SEAT		N04-4600-01	2	OUTER PISTON PTFE
	40-2691		INCLUDES PTFE DIAPHRAGM, VALVE BALL AND VALVE SEAT	27	N04-3700-01	2	INNER PISTON
1	N04-2012-07	1	AIR VALVE ASM GOLD		N04-3750-01	2	INNER PISTON PTFE
2	N04-2500-07	1	AIR VALVE SCREEN		N04-1010-51	2	DIAPHRAGM NEOPRENE
3	N04-2300-23	1	AIR VALVE END CAP W/ GUIDE (TOP)		N04-1010-52	2	DIAPHRAGM BUNA
4	N04-2330-23	1	AIR VALVE END CAP W/OUT GUIDE (BOTTOM)	28	N04-1010-53	2	DIAPHRAGM VITON®
5	N04-2650-03	2	AIR VALVE SNAP RING		N04-1010-54	2	DIAPHRAGM NORDEL®
6	N04-2390-52	2	AIR VALVE CAP O-RING		N04-1010-55	2	DIAPHRAGM PTFE
7	N04-2600-52	1	AIR VALVE GASKET		N04-1010-56	2	DIAPHRAGM HYTREL®
8	N04315020225	1	CENTER SECTION		N04-1010-58	2	DIAPHRAGM SANTOPRENE®
9	N04321077225	7	CENTER BLOCK TRACKER™ SEAL		N04-1080-51	4	VALVE BALL NEOPRENE
10	N04-5000-01	2	LIQUID CHAMBER	29	N04-1080-52	4	VALVE BALL BUNA
11	N04-7330-08	2	CLAMP BAND (LG)		N04-1080-53	4	VALVE BALL VITON®
12	N04-7100-08	4	CLAMP BAND (SM)		N04-1080-54	4	VALVE BALL NORDEL®
13	N04-5021-01	1	DISCHARGE MANIFOLD		N04-1080-55	4	VALVE BALL PTFE
14	N04-5080-01	1	INLET MANIFOLD		N04-1080-56	4	VALVE BALL HYTREL®
15	N04-6000-08	4	AIR VALVE CAP SCREW 1/4" - 20 X 2"		N04-1080-58	4	VALVE BALL SANTOPRENE®
16	N04-6070-08	4	LARGE CLAMP BAND BOLT 5/16"	30	N04-1120-51	4	VALVE SEAT NEOPRENE
17	N04-6420-08	4	LARGE HEX NUT 5/16" - 18		N04-1120-52	4	VALVE SEAT BUNA
18	N04-6050-08	8	SMALL CLAMP BAND BOLT 1/4" -20 X 1-3/4"		N04-1120-53	4	VALVE SEAT VITON®
19	N04-6400-08	8	SMALL HEX NUT 1/4" - 20		N04-1120-54	4	VALVE SEAT NORDEL®
20	N04-3180-20	1	MUFFLER PLATE		N04-1120-55	4	VALVE SEAT PTFE
21	N04-3500-52	1	MUFFLER PLATE GASKET		N04-1120-56	4	VALVE SEAT HYTREL®
22	N04-6400-08	4	AIR VALVE HEX NUT 1/4"-20		N04-1120-58	4	VALVE SEAT SANTOPRENE®
				31	N04-1200-55	4	PTFE VALVE SEAT O-RING
				32	N04-1060-52	2	BACK-UP DIAPHRAGM

Features:

Air Inlet	13 mm (1/2")
Inlet	38 mm (1-1/2")
Outlet	32 mm (1-1/4")
Suction Lift	5.49 m Dry (18')
	8.53 m Wet (28')
Max. Flow Rate	288 lpm (76 gpm)
Max. Size Solids	4.8 mm (3/16")
Height	442 mm (17.4")
Width	391 mm (15.4")
Depth	285 mm (11.2")
Est. Ship Weight:	17 kg (38 lbs)

H2O flow rates listed
Caution: Do not exceed 8.6 bar
(125 psig) air supply pressure.

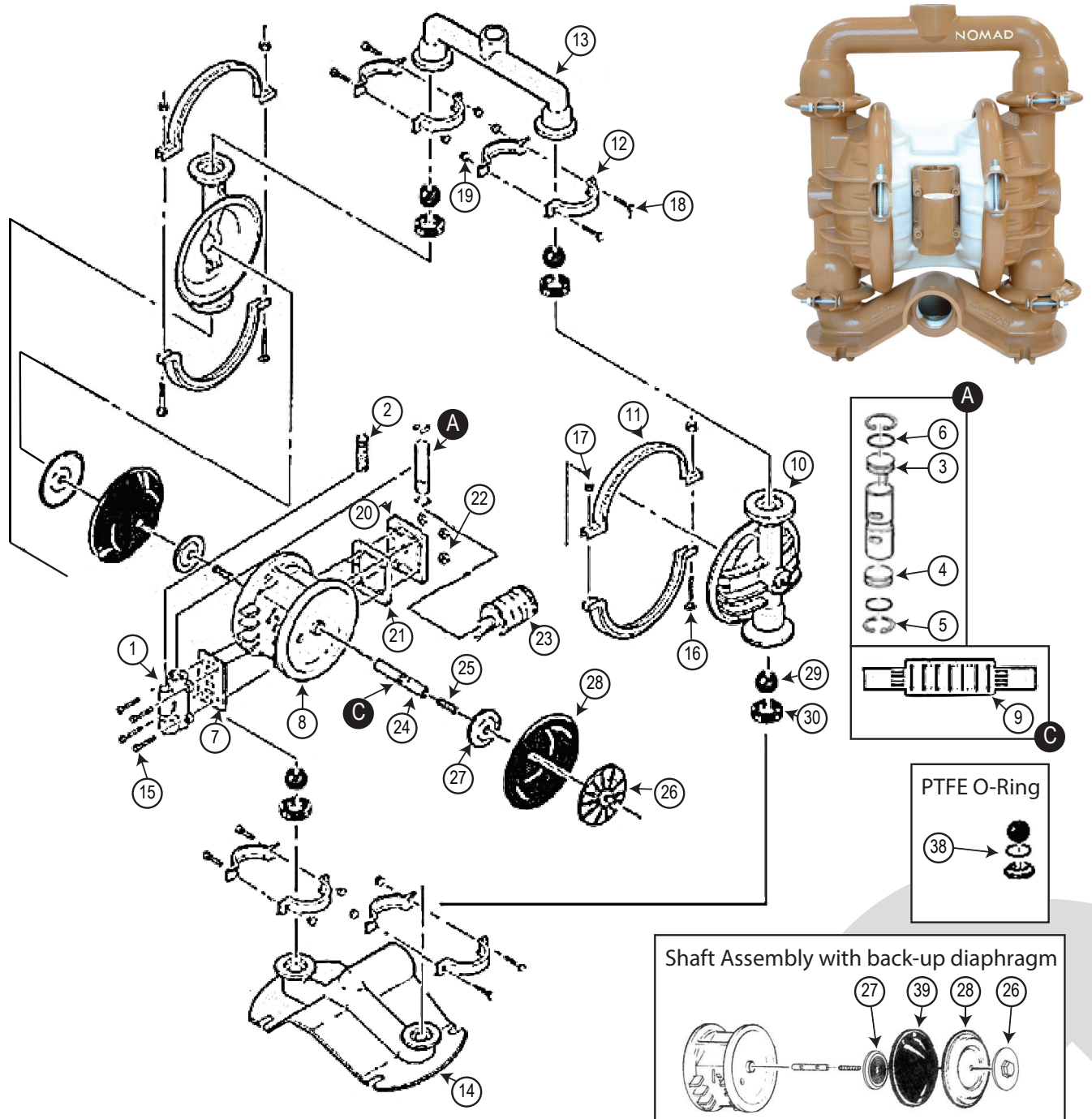
**PTFE Diaphragms: reduce
flow by 25%**



800.669.3542 | info@timeltd.ca

NOMAD NTG40

NTG40 1.5" ALUMINUM DIAPHRAGM PUMP



800.669.3542 | info@timeltd.ca

NOMAD NTG50

NTG50 2" ALUMINUM DIAPHRAGM PUMP

ITEM #	PART #	QTY	DESCRIPTION	ITEM #	PART #	QTY	DESCRIPTION
NTG50 2" ALUMINUM DIAPHRAGM PUMP ASSEMBLIES				27	N0838000307	1	SHAFT
	50-2693		INCLUDES NEOPRENE DIAPHRAGM, VALVE BALL AND VALVE SEAT		N0838200307	1	
	50-2696		INCLUDES BUNA DIAPHRAGM, VALVE BALL AND VALVE SEAT	28	N08-4550-01	2	OUTER PISTON
	50-2697		INCLUDES NORDEL DIAPHRAGM, VALVE BALL AND VALVE SEAT		N08-4600-01	2	
	50-26964		INCLUDES HYTREL DIAPHRAGM, VALVE BALL AND VALVE SEAT	29	N08-3700-01	2	INNER PISTON
	50-2698		INCLUDES VITON DIAPHRAGM, VALVE BALL AND VALVE SEAT		N08-3750-01	2	
	50-2699		INCLUDES SANTOPRENE DIAPHRAGM, VALVE BALL AND VALVE SEAT	30	N08-1010-51	2	DIAPHRAGM NEOPRENE
	50-2691		INCLUDES PTFE DIAPHRAGM, VALVE BALL AND VALVE SEAT		N08-1010-52	2	DIAPHRAGM BUNA
1	N08-2012-07P	1	AIR VALVE ASM GOLD		N08-1010-53	2	DIAPHRAGM VITON
2	N08-2500-07	1	AIR VALVE SCREEN		N08-1010-54	2	DIAPHRAGM NORDEL
3	N08-2300-23	1	AIR VALVE END CAP W/ GUIDE (TOP)		N08-1010-55	2	DIAPHRAGM PTFE
4	N08-2330-23	1	AIR VALVE END CAP W/OUT GUIDE (BOTTOM)		N08-1010-56	2	DIAPHRAGM HYTREL
5	N08-2650-03	2	AIR VALVE SNAP RING		N08-1010-58	2	DIAPHRAGM SANTOPRENE
6	N08-2390-52	2	AIR VALVE CAP O-RING	31	N08-1080-51	4	VALVE BALL NEOPRENE
7	N08-2600-52	1	AIR VALVE GASKET		N08-1080-52	4	VALVE BALL BUNA
8	N08-6000-08	4	AIR VALVE SCREW 5/16" - 18 X 2 1/4"		N08-1080-53	4	VALVE BALL VITON
9	N08-3100-01-225	1	CENTER BLOCK		N08-1080-54	4	VALVE BALL NORDEL
10	N08321055225	7	CENTER BLOCK TRACKER™ SEAL		N08-1080-55	4	VALVE BALL PTFE
11	N08-3520-52	2	BLOCK GASKET		N08-1080-56	4	VALVE BALL HYTREL
12	N08-3650-01	2	AIR CHAMBER		N08-1080-58	4	VALVE BALL SANTOPRENE
13	N08-6200-08	4	AIR CHAMBER SCREW 3/8" - 16 X 4"	32	N08-1120-51	4	VALVE SEAT NEOPRENE
14	N08-6550-08	4	AIR CHAMBER CONE NUT 3/8" - 16		N08-1120-52	4	VALVE SEAT BUNA
15	N08-5000-01	2	LIQUID CHAMBER		N08-1120-53	4	VALVE SEAT VITON
16	N08-5021-01	1	DISCHARGE MANIFOLD		N08-1120-54	4	VALVE SEAT NORDEL
17	N08-5080-01	1	INLET MANIFOLD		N08-1120-55	4	VALVE SEAT PTFE
18	N08-7300-08	2	LARGE CLAMP BAND ASM		N08-1120-56	4	VALVE SEAT HYTREL
19	N08-6120-08	4	LARGE CARRIAGE BOLT 3/8" - 16 X 3"		N08-1120-58	4	VALVE SEAT SANTOPRENE
20	N08-6420-08	4	LARGE HEX NUT 3/8" - 16	33	N08-6450-08	8	SMALL HEX NUT 5/16"-18
21	N08-7100-08	4	SMALL CLAMP BAND ASM		N08-6400-08	8	SMALL HEX NUT 5/16"-18 PTFE
22	N08-6050-08	8	SMALL CARRIAGE BOLT 5/16" - 18 X 1-3/8"	34	N08-6152-08	2	SHAFT STUD 1/2" - 20 X 1 - 7/8"
23	N08-3510-99	1	MUFFLER (NOT SHOWN)	35	N08-1060-52	2	BACK-UP DIAPHRAGM
24	N08-1450-51	1	CHECK BALL (NOT SHOWN)	36	N08-1200-55	4	PTFE VALVE SEAT O-RING
25	N08-3550-01	1	CHECK BODY (NOT SHOWN)	37	N0867200770	8	WASHER, FLAT (NOT SHOWN)
26	EBI-113-E3	1	PIPE NIPPLE (NOT SHOWN)				

Features:

Air Inlet	19 mm (3/4")
Inlet	51 mm (2")
Outlet	51 mm (2")
Suction Lift	6.4 m Dry (21')
	9.5 m Wet (31')
Max. Flow Rate	617 lpm (163 gpm)
Max. Size Solids	6.4 mm (1/4")
Height	668 mm (26.3")
Width	404 mm (15.9")
Depth	343 mm (13.5")

H2O flow rates listed
 Caution: Do not exceed 8.6 bar
 (125 psig) air supply pressure.

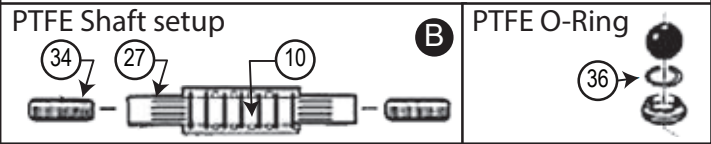
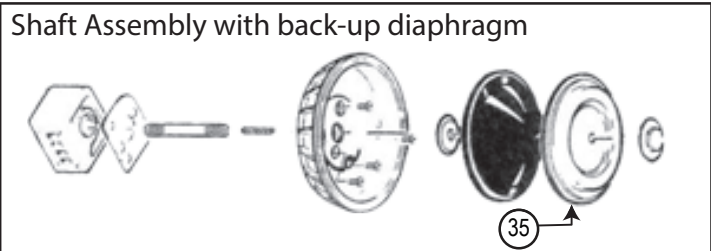
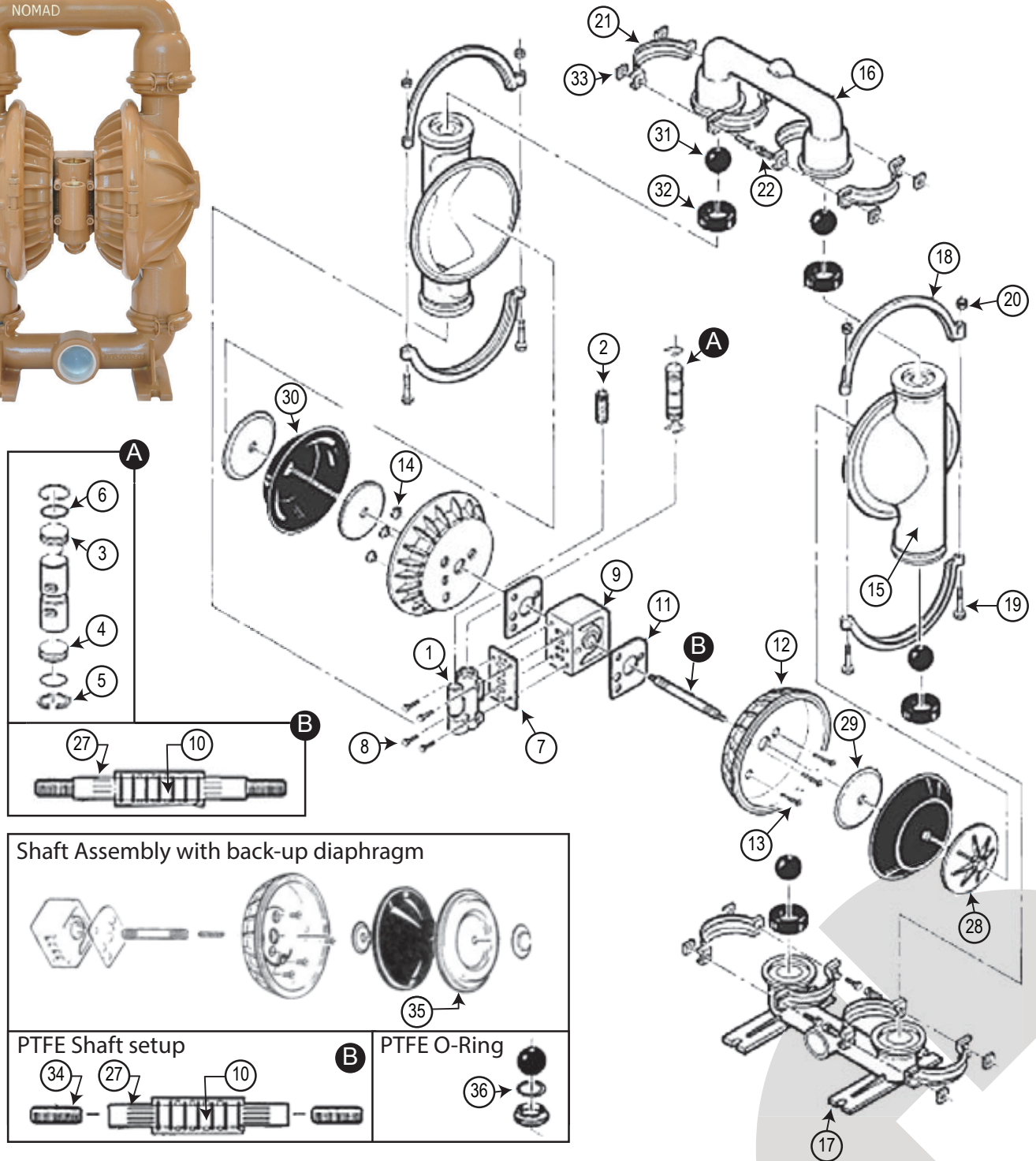
**PTFE Diaphragms: reduce
 flow by 25%**



800.669.3542 | info@timeltd.ca

NOMAD NTG50

NTG50 2" ALUMINUM DIAPHRAGM PUMP



800.669.3542 | info@timeltd.ca

NOMAD NTG80

NTG80 3" ALUMINUM DIAPHRAGM PUMP

ITEM #	PART #	QTY	DESCRIPTION	ITEM #	PART #	QTY	DESCRIPTION	
NTG80 3" ALUMINUM DIAPHRAGM PUMP ASSEMBLIES				27	N15-3550-01	1	CHECK BODY (NOT SHOWN)	
	80-2693		INCLUDES NEOPRENE DIAPHRAGM, VALVE BALL AND VALVE SEAT	28	N15-7420-08	1	PIPE NIPPLE (NOT SHOWN)	
	80-2696		INCLUDES BUNA DIAPHRAGM, VALVE BALL AND VALVE SEAT	29	N15-4550-01	2	OUTER PISTON	
	80-2697		INCLUDES NORDEL DIAPHRAGM, VALVE BALL AND VALVE SEAT		N15-4600-03	2		
	80-26964		INCLUDES HYTREL DIAPHRAGM, VALVE BALL AND VALVE SEAT	30	N15-3700-01	2	INNER PISTON	
	80-2698		INCLUDES VITON DIAPHRAGM, VALVE BALL AND VALVE SEAT		N15-3750-01	2		
	80-2699		INCLUDES SANTOPRENE DIAPHRAGM, VALVE BALL AND VALVE SEAT	31	N15-6850-08	2	INNER PISTON BACK-UP WASHER	
	80-2691		INCLUDES PTFE DIAPHRAGM, VALVE BALL AND VALVE SEAT	32	N15-6130-08	12	PISTON ASM BOLT 2 3/8" - 16 X 1 1/2"	
1	N15-2012-07	1	AIR VALVE ASM GOLD	33	N15-6720-08	12	WASHER, FLAT (NOT SHOWN)	
2	N08-2500-07	1	AIR VALVE SCREEN	34	N15-1010-51	2	DIAPHRAGM NEOPRENE	
3	N15-2300-23	1	AIR VALVE END CAP W/ GUIDE (TOP)		N15-1010-52	2	DIAPHRAGM BUNA	
4	N15-2330-23	1	AIR VALVE END CAP W/OUT GUIDE (BOTTOM)		N15-1010-53	2	DIAPHRAGM VITON	
5	N15-2650-03	2	AIR VALVE SNAP RING		N15-1010-54	2	DIAPHRAGM NORDEL	
6	N15-2390-52	2	AIR VALVE CAP O-RING		N15-1010-55	2	DIAPHRAGM PTFE	
7	N15-2600-52	1	AIR VALVE GASKET		N15-1010-56	2	DIAPHRAGM HYTREL	
8	N08-6000-08	4	AIR VALVE SCREW 5/16" - 18 X 2 1/4"		N15-1010-58	2	DIAPHRAGM SANTOPRENE	
9	N15310001225	1	CENTER BLOCK		35	N15-1080-51	4	VALVE BALL NEOPRENE
10	N15321077225	7	CENTER BLOCK TRACKER™ SEAL			N15-1080-52	4	VALVE BALL BUNA
11	N15-3520-52	2	BLOCK GASKET			N15-1080-53	4	VALVE BALL VITON
12	N1538000307	1	SHAFT	N15-1080-54		4	VALVE BALL NORDEL	
13	N15-3650-01	2	AIR CHAMBER	N15-1080-55		4	VALVE BALL PTFE	
14	N15-6200-08	4	AIR CHAMBER SCREW 3/8" - 16 X 4"	N15-1080-56		4	VALVE BALL HYTREL	
15	N15-6550-08	4	AIR CHAMBER CONE NUT 3/8" - 16	N15-1080-58		4	VALVE BALL SANTOPRENE ®	
16	N15-5000-01	2	LIQUID CHAMBER	36		N15-1120-51	4	VALVE SEAT NEOPRENE
17	N15-5021-01	1	DISCHARGE MANIFOLD		N15-1120-52	4	VALVE SEAT BUNA	
18	N15-5080-01	1	INLET MANIFOLD		N15-1120-53	4	VALVE SEAT VITON ®	
19	N15-7300-08	2	LARGE CLAMP BAND ASM		N15-1120-54	4	VALVE SEAT NORDEL ®	
20	N15-6120-08	4	LARGE CARRIAGE BOLT 1/2" - 13 X 3 1/2"		N15-1120-55	4	VALVE SEAT PTFE	
21	N15-6420-08	4	LARGE HEX NUT 1/2" -13		N15-1120-56	4	VALVE SEAT HYTREL ®	
22	N15-7100-08	4	SMALL CLAMP BAND ASM		N15-1120-58	4	VALVE SEAT SANTOPRENE	
23	N15-6050-08	8	SMALL CARRIAGE BOLT 3/8" - 16 X 2"		37	N15-1060-52	2	BACK-UP DIAPHRAGM
24	N15-6450-08	8	SMALL HEX NUT 3/8" -16	38	N15-1200-55	4	PTFE VALVE SEAT O-RING	
25	N15-3510-99	1	MUFFLER (NOT SHOWN)	39	N0867200770	8	WASHER, FLAT (NOT SHOWN)	
26	N15-1450-51	1	CHECK BALL (NOT SHOWN)					

Features:

Air Inlet	19 mm (3/4")
Inlet	76 mm (3")
Outlet	76 mm (3")
Suction Lift	5.5 m Dry (18')
	9.45 m Wet (31')
Max. Flow Rate	878 lpm (232 gpm)
Max. Size Solids	10 mm (3/8")
Height	810 mm (31.9")
Width	432 mm (17.0")
Depth	279 mm (11")

H2O flow rates listed
 Caution: Do not exceed 8.6 bar
 (125 psig) air supply pressure.

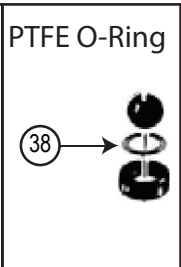
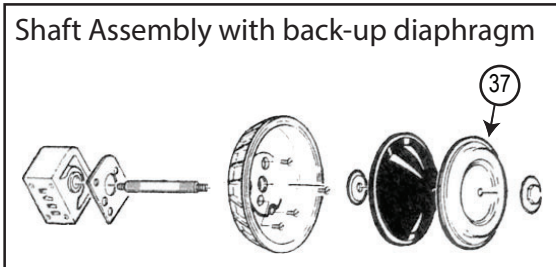
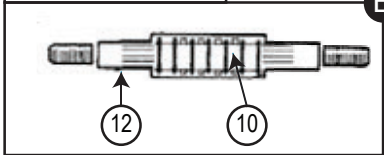
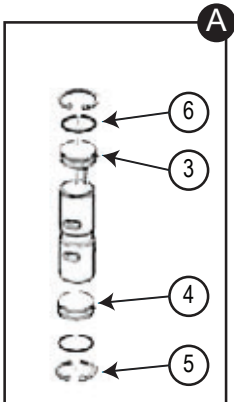
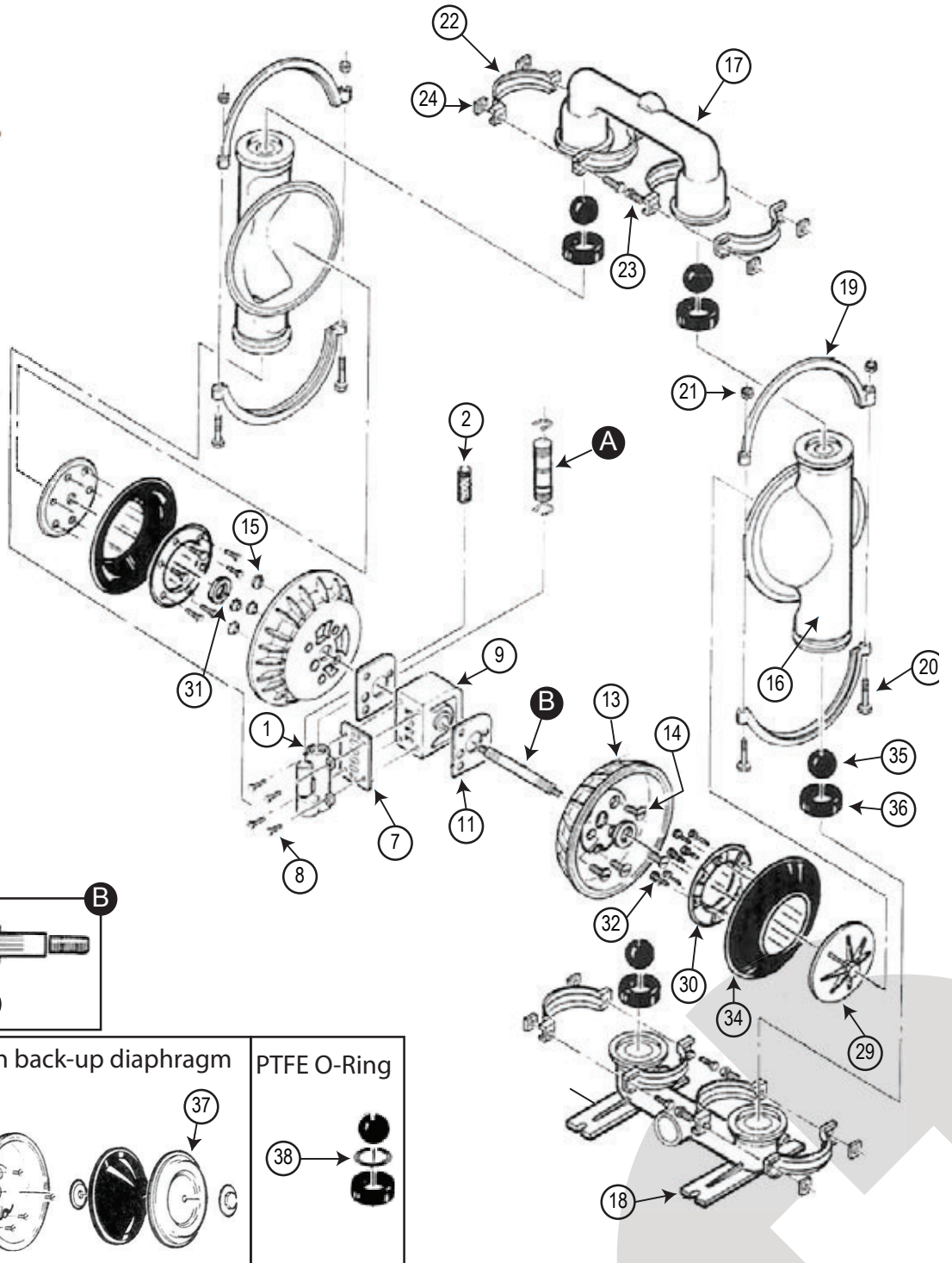
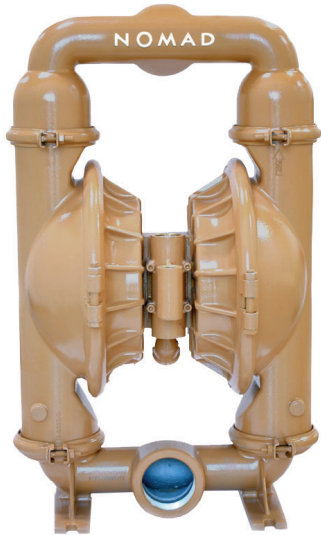
**PTFE Diaphragms: reduce
 flow by 25%**



800.669.3542 | info@timeltd.ca

NOMAD NTG80

NTG80 3" ALUMINUM DIAPHRAGM PUMP



800.669.3542 | info@timeltd.ca