

# FMC W11

## SERIES 435BCD | 39-160-04

ITEM #	PART #	QTY	DESCRIPTION	ITEM #	PART #	QTY	DESCRIPTION
	39-160-04		FMC W11-435BCD BEAN PUMP	30	0812BHHZG5	20	CAP SCREW, HX HD, 1/2-13 UNC2A X 0.75 LG
1	39-5257698	1	PUMP CASE	31	39-1104349	1	KEY 3/8" X 2-1/2"
2	39-1285094	1	CRANKSHAFT & GEAR	32	39-1187048	2	PIPE PLUG SQ HD 1/2 NPT CARBON STEEL
3*	39-5266814	3	CONNECTING ROD (*CONSISTS OF ITEMS 3-1 TO 3-3)	33	39-1187039	1	PETCOCK
3-1	39-9226	3	BUSHING, CONNECTING ROD	34	39-1284777	1	VALVE CHAMBER
3-2	39-18744	6	BOLT CONNECTING ROD	35	39-1284740	6	VALVE SEAT
3-3	39-1101270	6	NUT 1/2 - 20 ELAS. STOP	36	39-1101419	6	BALL, 1-1/8 DIA
4	39-P514965	3	ROD BEARING (PAIR)	37A	39-1267586	3	CYLINDER-CERAMIC
5	39-A91014	3	WRIST PIN	37B	39-A91664CLM	3	CYLINDER-PORCELAIN
6	39-1252939	3	CROSSHEAD ASM	38	39-5260221	3	CYLINDER PACKING, ABRASIVE
7A	39-3268369	3	SEAL HOLDER	39	39-A91663	3	PACKING HOLDER
7B	39-1266365	3	SEAL HOLDER (PRE 2014)	40	39-1216753	3	PACKING WASHER
8	39-1177489	9	ROD SEAL	41	39-1285112M	3	CYLINDER COVER
9	39-1248369	2	BEARING HOUSING	42A	39-1279674	3	GASKET CYLINDER COVER - FIBER
10	39-A91675	2	GASKET	42B	39-1247390	3	GASKET CYLINDER COVER - COPPER
11	39-1252595	6	SHIM	43	39-A80392	3	CYLINDER COVER CLAMP
12A	39-P508969	1	BACK COVER 18 HOLE	44	39-1285113M	3	VALVE COVER
12B	39-1250332	1	BACK COVER 16 HOLE (PRE 2014)	45A	39-1279675	3	GASKET VALVE COVER - FIBER
13A	39-P508966	1	GASKET, BACK COVER 18 HOLE	45B	39-1247388	3	GASKET VALVE COVER - COPPER
13B	39-A91676	1	GASKET, BACK COVER 16 HOLE (PRE 2014)	46	39-A80391	3	VALVE COVER CLAMP
14	39-A5054	1	OIL CAP	47A	39-1279676	6	GASKET CYLINDER - FIBER
15	39-1177473	2	BEARING CONE 2.25 ID X 1.1875 LG	47B	39-1247389	6	GASKET CYLINDER - COPPER
16	39-1177474	2	BEARING CUP 4.4375 OD X 1.1875 LG	48*	39-1278104	6	VALVE DISC ASM (*CONSISTS OF ITEMS 48-1 TO 48-5)
17A	39-P511596	1	PINION SHAFT	48-1	39-1278054	6	SEAT, VALVE
17B	39-P513120	1	PINION SHAFT (DOUBLE SIDED)	48-2	39-5277943	6	DISC
18	39-P508916	1	PINION CAP	48-3	39-1283377	6	SPRING
19	39-5257338	1	PINION BEARING CAP (USED WITH OIL SEAL 5257339)	48-4	39-1283376	6	WASHER
20A	39-P511746	2	BEARING, SPHERICAL ROLLER	48-5	39-1101229	6	RETAINING RING
20B	39-1272558	2	BALL BEARING (PRE 2014)	49	568-014-90	3	"O" RING
21	39-A91674	2	GASKET	50	39-A5016	3	PLUNGER NUT 3/4-16 UNF
22	39-5257339	1	OIL SEAL (FOR PINION BEARING CAP 5257338)	51	08NHZGR5	6	HEX NUT1/2-13 UNC-2B
23	39-1266323	3	PACKING NUT	52	10NHZ	8	HEX NUT 5/8-11 UNC-2B
24A	39-3268418	3	PACKING GASKET	53	39-8309	3	NUT, HEX 1/2-13 UNC
24B	39-19510	3	PACKING WASHER (PRE 2014)	54	BI-109-J	1	PLUG; 1-1/4"
25	39-1103470	6	SET SCREW 5/16"	55	BI-109-A	6	PIPE PLUG; HEX HEAD 1/8-27 NPT
26	39-5260567	1	INSPECTION PLATE	56	BI-109-M	2	SQUARE HEAD PLUG
27	39-3226710	2	O-RING	57	39-A5076	6	STUD 1/2-13UNC-2A X 3.5 LONG
28	0408BHHZG5	2	CAP SCREW, HX HD, 1/4-20 UNC2A X 0.5 LG	58	39-A91672	2	STUD 5/8-11 UNC-2A X 7.88 LONG
29	0816BHHZG5	12	CAP SCREW 1/2"	59	39-1279602	6	STUD 5/8-11 UNC-2A X 10.5 LONG
				60	08WLZ	6	WASHER, FLAT 1/2 TYPE A
				61	10WLZ	6	WASHER, FLAT 5/8 TYPE A

### Specifications:

- Standard Suction Size: 1.50" NPT
- Standard Discharge Size: 1.00" NPT
- Pump Weight: 200 LBS
- 14 HP
- Flows to 28 GPM
- Pressures to 1000 psi

### Features:

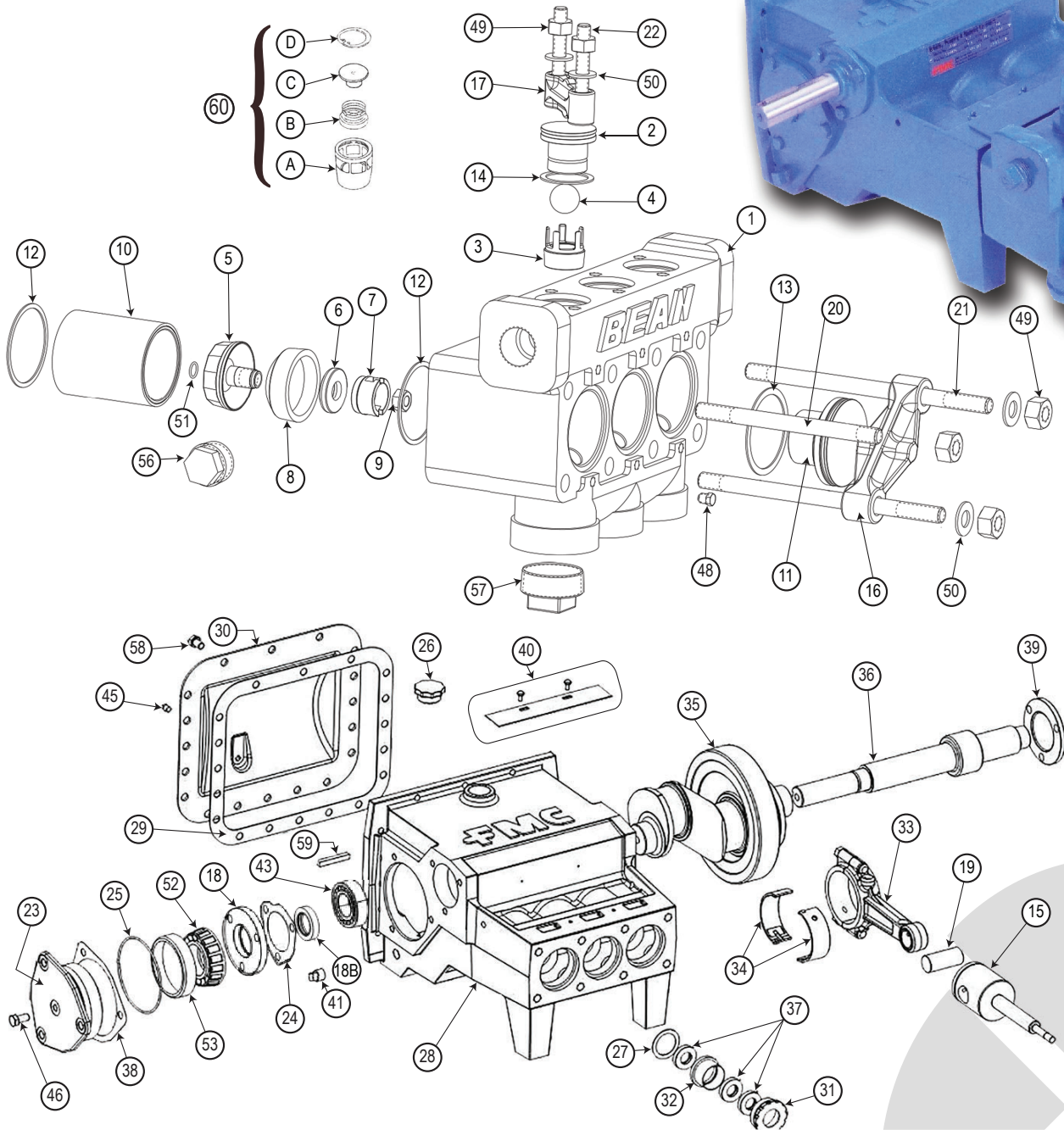
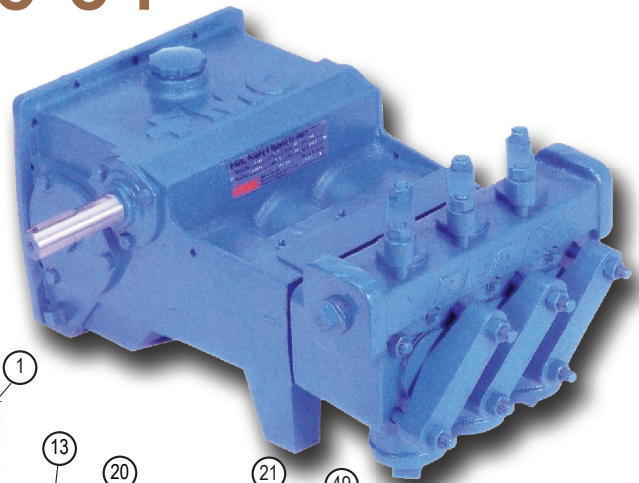
- Fluid end material of cast iron
- Pump can be easily repacked
- Ceramic cylinders
- Internal gear reduction in crankcase eliminates need for large sheaves
- Ball valves are available for pumping viscous materials such as drilling muds



800.669.3542 | info@timeltd.ca

# FMC W11

SERIES 435BCD | 39-160-04



800.669.3542 | [info@timeltd.ca](mailto:info@timeltd.ca)