

# PRATISSOLI KF40

## PRATISSOLI KF40 WATER PUMP

The Pratissoli range of triplex pumps, developed in more than 50 years of activity in the field, counts over 60 different models including flow rates up to 420 liters per minute, pressures up to 1500 bar, and powers up to 150 HP. All models are designed and produced to stand the toughest working conditions.

ITEM #	PART #	QTY	DESCRIPTION	KIT
	160-17		PRATISSOLI KF40 PUMP	
1	71010022	1	CRANKCASE	
2	91859000	2	TAPPED ROLLER BEARING 33210/Q	
3	90391800	2	O-RING Ø 94,92X2,62 (3375)	D
4	71220081	1	SHIM	
	71220381	1	SHIM	
5	90075600	1	RETAINING RING ZJ45	D
6	70211801	1	SIGHT GLASS, OIL LEVEL	
7	90387700	1	O-RING Ø 39,34X2,62 (3156)	D
8	71150122	1	CRANKSHAFT END CAP	
9	99186700	20	SCREW M6X18 UNI5931 Z.	
10	90384100	4	O-RING Ø 17,13X2,62 (3068)	D
11	98218300	1	PLUG G 1/2" X13 - NICKEL	
12	98212000	1	DIP STICK	
13	71160022	1	CRANKCASE COVER	
14	90400000	1	O-RING Ø 215X3	D
15	98206000	4	DUST PLUG Ø 15	
16	99313800	6	CONNECTING ROD BOLT	
17	71020035	1	CRANKSHAFT	
18	91500000	1	DRIVE KEY	
19	71150022	1	CRANKSHAFT END CAP PTO	
20	90170000	1	CRANKSHAFT OIL SEAL Ø 50X65X8 - VITON	D
22	90060600	6	RETAINING RING Ø 20 UNI7437	
23	71050015	3	PLUNGER GUIDE	
24	97743000	3	WRIST PIN Ø 20X38	
25	90167800	3	PLUNGER OIL SEAL Ø 38X52X7	D
26	96714000	3	FLINGER WASHER Ø 10X50X1	
27	71040309	3	PLUNGER Ø 30	
	71040409	3	PLUNGER Ø 36	
	71040509	3	PLUNGER Ø 40	
	71040609	3	PLUNGER Ø 28	
28	90367100	3	O-RING Ø 11X2 (11020) - 90SH.	D
29	71219566	3	PLUNGER BOLT	
30	90079700	3	RETAINING RING Ø 52 UNI7437	
31	71217670	3	PACKING WASHER Ø 28	
	71217770	3	PACKING WASHER Ø 30	
	71218070	3	PACKING WASHER Ø 36	
	71218270	3	PACKING WASHER Ø 40	
32	90275000	3	PACKING Ø 28 L.P.	A-D
	90276000	3	PACKING Ø 30 L.P.	A-D
	90280000	3	PACKING Ø 36 L.P.	A-D
	90283000	3	PACKING Ø 40 L.P.	A-D
33	71215670	3	PACKING SUPPORT Ø 28	
	71215370	3	PACKING SUPPORT Ø 30	
	71215470	3	PACKING SUPPORT Ø 36	
	71215570	3	PACKING SUPPORT Ø 40	
34	90389100	3	O-RING Ø 52,07X2,62	A-D

ITEM #	PART #	QTY	DESCRIPTION	KIT
35	90275500	3	RESTOP RING Ø 28	A-D
	90277400	3	RESTOP RING Ø 30	A-D
	90281800	3	RESTOP RING Ø 36	A-D
	90283800	3	RESTOP RING Ø 40	A-D
36	90275800	3	PACKING Ø 28 H.P.	A-D
	90277000	3	PACKING Ø 30 H.P.	A-D
	90282000	3	PACKING Ø 36 H.P.	A-D
	90283200	3	PACKING Ø 40 H.P.	A-D
37	70100351	3	HEAD RING Ø 28	D
	70100451	3	HEAD RING Ø 30	D
	71100251	3	HEAD RING Ø 36	D
	71100351	3	HEAD RING Ø 40	D
38	71121036	1	PUMP HEAD Ø 28-30	
	71125036	1	PUMP HEAD Ø 28-30 - NPT	
	71121136	1	PUMP HEAD Ø 36	
	71125136	1	PUMP HEAD Ø 36 - NPT	
	71121236	1	PUMP HEAD Ø 40	
	71125236	1	PUMP HEAD Ø 40 - NPT	
39	99448000	8	SCREW M12X150 UNI5931	
40	99429500	14	SCREW M12X35 UNI5931	
41	71210136	2	VALVE COVER PLATE	
42	71211170	6	VALVE PLUG	
43	90525000	6	ANTI-EXTRUSION RING Ø 50,9X55X1,5	D
44	90388900	12	O-RING Ø 48,89X2,62 (3193)	D
45	36204551	6	VALVE CAGE	
46	94755000	3	SPRING Ø 25,2X26	
47	36208651	6	VALVE GUIDE	
48	36208502	6	VALVE POPPET	
49	36204156	6	VALVE SEAT	
50	90524000	6	ANTI-EXTRUSION RING Ø 49,5X54X1,5	D
51	36713701	3	DELIVERY VALVE ASM	C
52	36713601	3	INLET VALVE ASM	B
53	94754000	3	SPRING Ø 24,7X27	
54	10067720	1	HYDRAULIC FLANGE	
55	99309900	6	SCREW M8X35 UNI5931 Z.	
56	71030701	3	CONNECTING ROD COMPLETE	
57	99512000	1	SCREW M16X1,5X25 UNI5740 8.8 Z.	
58	71223074	1	LIFTING POINT	
59	98218100	3	PLUG G 1/2" X13 - SS	
60	71225851	6	PLUNGER PLUG	
61	71225951	3	DUST CAP	
62	90924300	3	CONNECTING ROD BUSHING - INF.	E
	90924400	3	CONNECTING ROD BUSHING +0.25- INF.	E
	90924500	3	CONNECTING ROD BUSHING +0.50 - INF.	E
63	90924000	3	CONNECTING ROD BUSHING - SUP.	E
	90924100	3	CONNECTING ROD BUSHING +0.25 - SUP.	E
	90924200	3	CONNECTING ROD BUSHING LLA +0.5-0 SUP.	E
64	90911000	3	WRIST PIN BUSHING	

### MATERIAL QUALITY

- Patent pending pump body in die cast aluminum
- Nickel-treated stainless steel head
- Conical shaft bearings
- Aluminum alloy connecting rods
- Forged steel crankshaft
- Crankshaft sealings in viton
- Guide pistons in surface treated cast iron
- Full ceramic plungers
- Stainless steel valves

### CONSTRUCTION

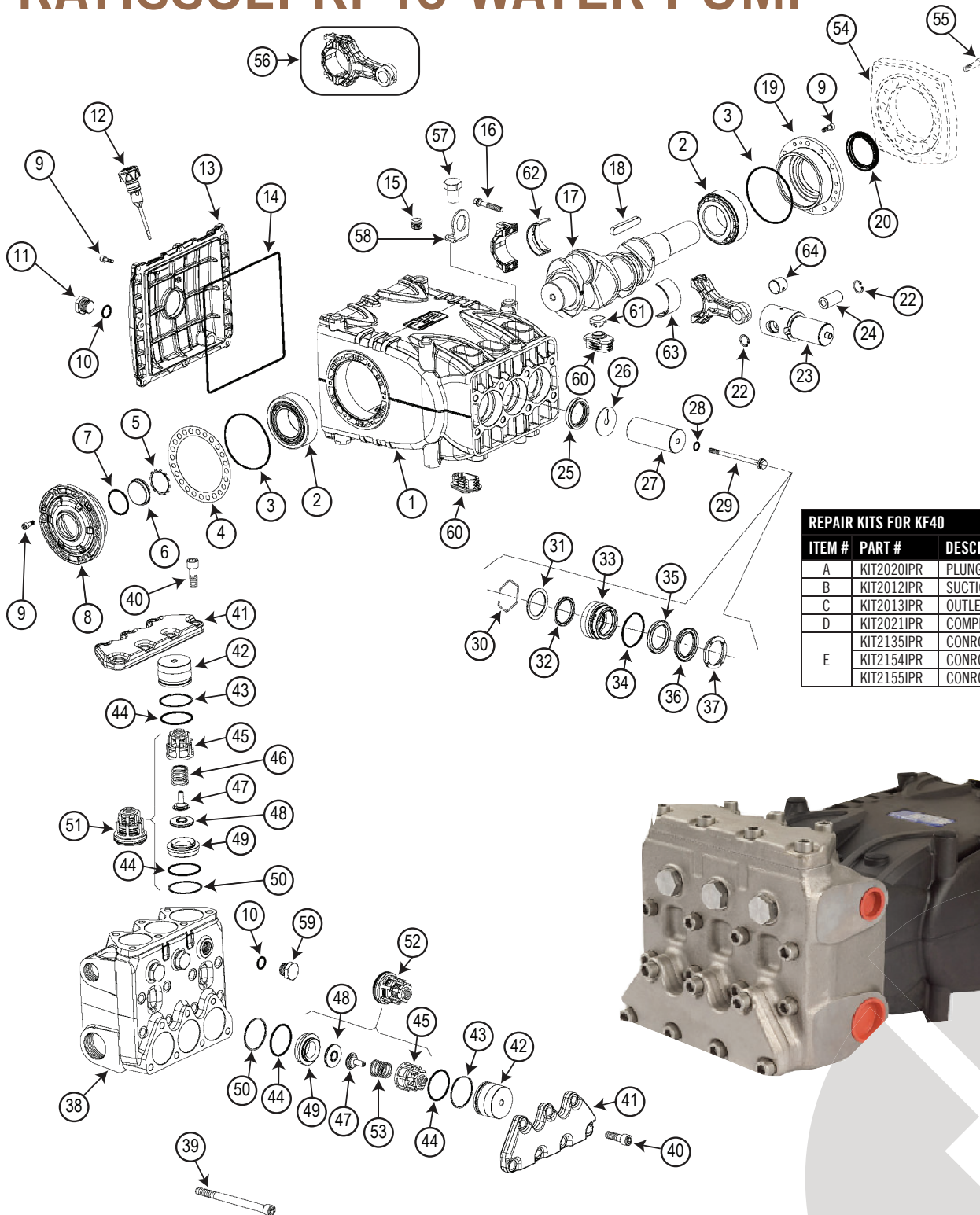
- Triplex high pressure plunger pump, four versions in one
- Symmetrical crankcase for easy "left to right" conversion
- Single P.T.O. shaft, d. 40
- Plunger seal design: HP seal + LH seal with cooling chamber in low pressure
- Long life Suction/Delivery in line valves with spherical profile
- Splash lubrication



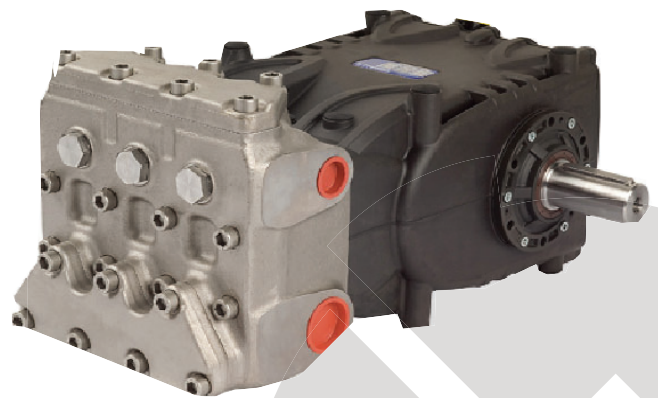
800.669.3542 | info@timeltd.ca

# PRATISSOLI KF40

## PRATISSOLI KF40 WATER PUMP



REPAIR KITS FOR KF40		
ITEM #	PART #	DESCRIPTION
A	KIT2020IPR	PLUNGER PACKING KIT
B	KIT2012IPR	SUCTION VALVES KIT
C	KIT2013IPR	OUTLET VALVES KIT
D	KIT2021IPR	COMPLETE SEALS KIT
E	KIT2135IPR	CONROD BUSHING KIT (STD)
	KIT2154IPR	CONROD BUSHING KIT (+.25)
	KIT2155IPR	CONROD BUSHING KIT (+.50)



800.669.3542 | [info@timeltd.ca](mailto:info@timeltd.ca)

# PRATISSOLI KF50

## PRATISSOLI KF50 WATER PUMP

The KF50M pump has been designed and developed to operate in environments with atmospheres that are not potentially explosive and with fluids with a high percentage of bentonite, whose recommended maximum value of density is equal to ~ 45 sec. Marsh cone and at a maximum temperature of 40°C.

ITEM #	PART #	QTY	DESCRIPTION	KIT	ITEM #	PART #	QTY	DESCRIPTION	KIT
	160-18		PRATISSOLI KF50 PUMP		33	91859000	2	ROLLER BEARING 33210/Q KF40/KF50M	
1	71224922	1	SPACER, MANIFOLD KF50M		34	90391800	2	O-RING 94.92 X 2.62 KF40/KF50M	D
2	71129815	1	MANIFOLD KF50M			71220081		SHIM 0.1 KF40/KF50M	
2	71129915	1	MANIFOLD NPT KF50M			71220381		SHIM 0.25 KF40/KF50M	
3	71060602	3	CYLINDER 50MM KF50M	C	36	90075600	1	WASHER NOTCHED 45MM KF40/KF50M	D
4	90367800	3	O-RING 15.0 X 2.0 NBR 70 SH KF50M	A-C-D	37	70211801	1	SPACER KF40/KF50M	
5	71227770	3	SUPPORT PISTON, PACKING KF50M		38	90387700	1	O-RING 39.34 X 2.62 KF40/KF50M	D
6	93199600	3	PACKING, PISTON, CUP KF50M	A-C	39	71150122	1	OIL LEVEL INDICATOR SIDE COVER KF40/KF50M	
7	71227966	3	CONNECTOR, PISTON SUPPORT KF50M		40	99186700	20	SCREW TCEI M6 X 18 KF40/KF50M	
8	93200000	3	WASHER 50 X 60.4 X 1.5 KF50M	C-D	41	98212000	1	OIL CAP 21.5 X 91 KF40/KF50M	
9	98232500	3	PLUG, G 1" X 17 KF50M		42	71160022	1	CRANKCASE COVER KF40/KF50M	
10	90386300	3	O-RING 28.25 X 2.62 NBR 70 SH KF50M	B-D	43	90400000	1	O-RING 215 X 3MM KF40/KF50M	D
11	36211405	6	VALVE SEAT KF50M	B	44	98206000	4	PLUG D.15 PORT KF40/KF50M	
12	97490000	6	BALL, VALVE 25.4 (1") KF50M	B	45	71223074	1	LIFTING EYEBOLT KF40/KF50M	
13	99312720	3	BOLT, M8X45 UNI 5737 KF50M		46	99426600	1	BOLT, M12 X 25, UNI 5739 KF40/KF50M	
14	90389100	3	O-RING 52.07 X 2.62 NBR 70 SH KF40/KF50M	A-B-C-D	47	99313800	6	CONNECTING ROD SCREW KF40/KF50M	
15	71228062	3	PLUG, CAP, PISTON KF50M		48	71030701	3	CONNECTING ROD COMPLETE KF40/KF50M	
16	98218700	1	PLUG, G1/2 X 13 NICKEL KF50M			90924400	3	CONNECTING ROD BEARING KF40/KF50M NEW/S	E
17	90384100	4	O-RING 0.674 ID X 0.103 KF40/KF50M	D	49	90924300	3	CONNECTING ROD BEARING +0.25MM KF40/50M	E
18	90387700	3	O-RING 1.549 ID X 0.103 CS KF40/KF50M	B		90924500	3	CONNECTING ROD BEARING +0.50MM KF40/50M	E
19	71130562	3	PLUG, CAP, VALVE KF50M		50	71020035	1	CRANKSHAFT KF40/KF50M	
20	71227615	1	COVER, VALVE PLATE KF50M		51	91500000	1	CRANKSHAFT KEY KF40/KF50M	
21	99429400	12	BOLT M12 X 35 UNI 5737 KF50M		52	71150022	1	MOTOR SIDE BEARING COVER KF40/KF50M	
22	71227866	3	PISTON SUPPORT KF50M		53	90170000	1	OIL SEAL 50 X 6.5 X 8 VITON KF40/KF50M	D
23	98243600	3	CAP, PLASTIC 47 X 35 X 12.5MM KF50M		54	71225951	3	VENT PLUG DUST CAP KF40/KF50M	
24	76040056	3	PISTON 30 X 70 KF50M		55	71225851	3	VENT PLUG KF40/KF50M	
25	71225070	3	SUPPORT, LPS KF50M			90924000	3	CONNECTING ROD BUSHING KF40/KF50M	
26	90276800	3	SEAL 30 X 43 X 8.5MM KF50M	C-D	56	90924100	3	CONNECTING ROD BUSHING +0.25MM KF40/KF50M	E
27	95822000	3	BOLT, STUD, SS M7 X 32, 71 SERIES KF50M			90924200	2	CONNECTING ROD BUSHING +0.50MM KF40/KF50M	E
28	71227513	1	COVER, PISTON KF50M		57	90060600	6	RING D.20 KF40/KF50M	
29	99450100	4	BOLT, M12 X 220 UNI 5737 KF50M		58	71050015	3	PISTON GUIDE KF40/KF50M	
30	92239500	4	NUT, M12 X 19 X 10 UNI 5588, ZINC KF50M		59	90911000	3	BUSHING, BRONZE KF40/KF50M	
31	95842000	4	BOLT, SPACER M12 X 233 KF50M		60	97743000	3	PIN 20 X 38 KF40/KF50M	
32	71010022	1	PUMP CRANKCASE KF40/KF50M		61	96714000	3	WIPER KF40/KF50M	
34	90389100	3	O-RING Ø 52,07X2,62	A-D	62	90167800	3	SEAL 38 X 52 X 7 KF40/KF50M	D
					64	98218300	3	PLUG G 1/2 X 10 TE27 ZINC KF40/KF50M	

### CONSTRUCTION

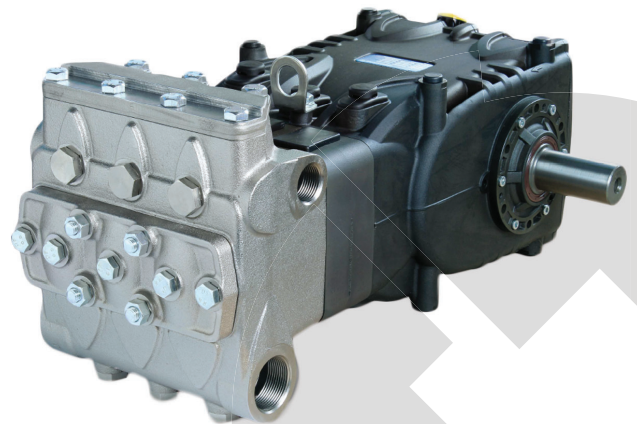
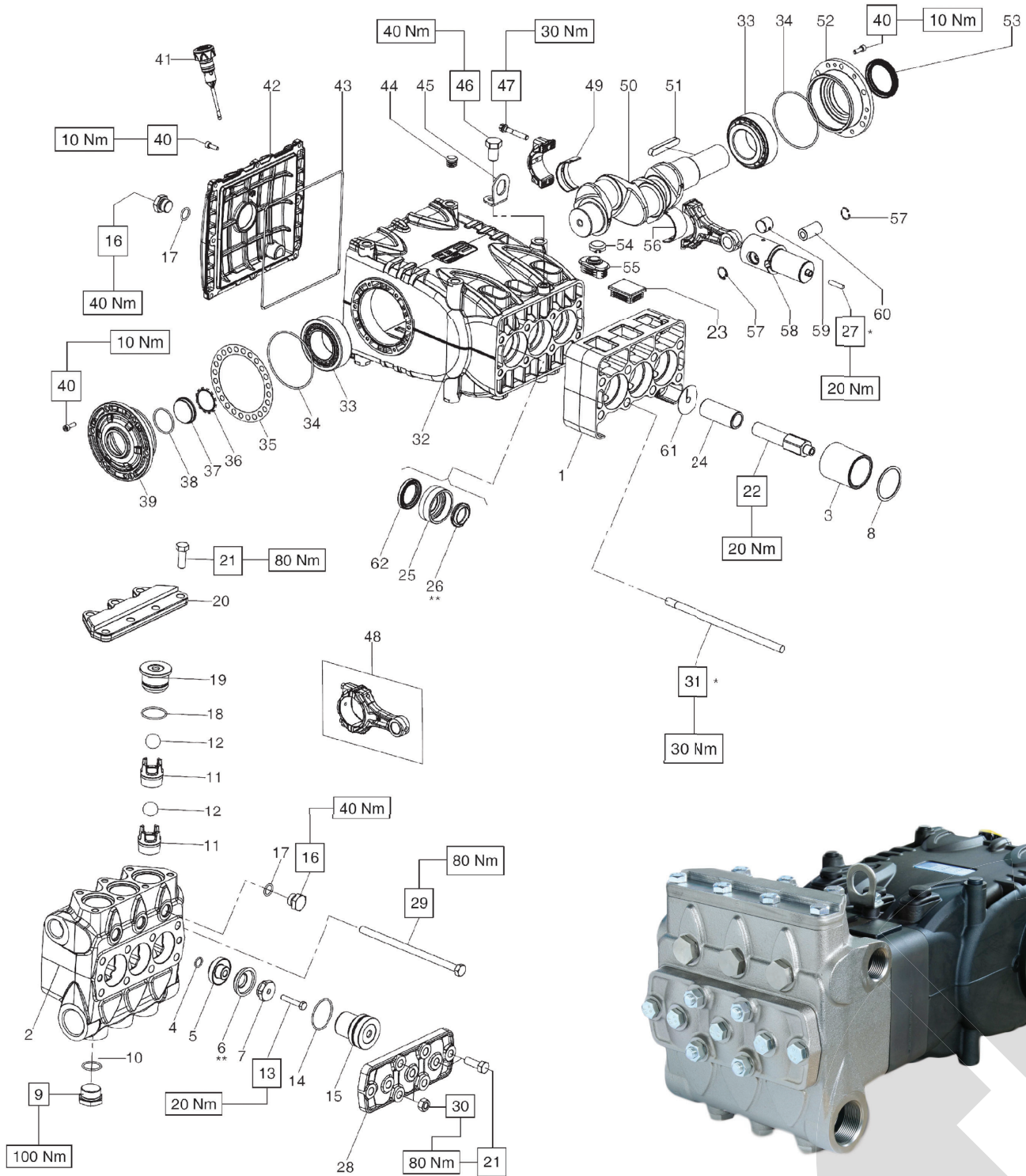
- Positive displacement reciprocating triplex piston pump, designed to handle drilling fluids, muds, slurries for a variety of applications
- Energysed packings, made of abrasion resistant polymers.
- Self cleaning ball valves
- Splash lubrication
- High heat dissipation patented crankcase.
- Optional gear box.



800.669.3542 | [info@timeltd.ca](mailto:info@timeltd.ca)

# PRATISSOLI KF50

## PRATISSOLI KF50 WATER PUMP



800.669.3542 | [info@timeltd.ca](mailto:info@timeltd.ca)