

Margo Type Plugs

The Margo type plug is arranged in single and double pack designs in various lengths. It is mechanically operated from outside the hole, and is generally used for controlling water flows from drill holes. The plug is inserted into the collar of the hole and the rubbers are expanded by simply tightening the nut. A valve may be screwed onto the protruding end of the plug to control the flow of water.

Valves must be ordered separately.

To determine product number required:

All Margo type plugs are in product class 422;
add 2 or 3 digit extension in chart to get product number.

Example: to order a 48 plug, sized 1-1/2
(EX) x 1/2 pipe size order #422-23.

Custom sizes available.



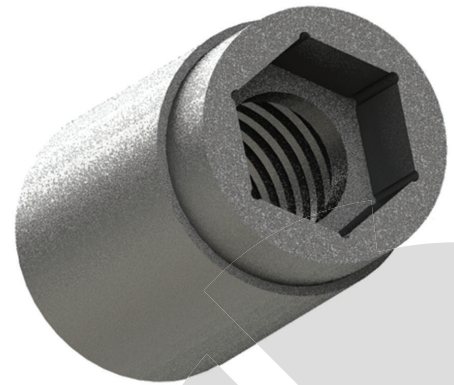
Ref Number	Hole Diameter	Pipe Size	Product Number – determined by length									
			18"	24"	36"	48"	60"	72"	84"	96"	108"	120"
M-112	1-1/4"	1/2"	422-00	422-01	422-02	422-03	422-04	422-05	422-06	422-07	422-08	422-09
M-125	1-3/8"	1/2"	422-10	422-11	422-12	422-13	422-14	422-15	422-16	422-17	422-18	422-19
M-137	1-1/2" EX	1/2"	422-20	422-21	422-22	422-23	422-24	422-25	422-26	422-27	422-28	422-29
M-162	1-3/4"	1/2"	422-30	422-31	422-32	422-33	422-34	422-35	422-36	422-37	422-38	422-39
M-175	1-7/8" A	1/2"	422-40	422-41	422-42	422-43	422-44	422-45	422-46	422-47	422-48	422-49
M-187	2"	1/2"	422-50	422-51	422-52	422-53	422-54	422-55	422-56	422-57	422-58	422-59
M-212	2-1/4"	1"	422-70	422-71	422-72	422-73	422-74	422-75	422-76	422-77	422-78	422-79
M-225	2-3/8" B	1"	422-80	422-81	422-82	422-83	422-84	422-85	422-86	422-87	422-88	422-89
M-237	2-1/2"	1"	422-90	422-91	422-92	422-93	422-94	422-95	422-96	422-97	422-98	422-99
M-262	2-3/4"	1"	422-208	422-100	422-101	422-102	422-103	422-104	422-105	422-106	422-107	422-108
M-287	3" N	1"		422-109	422-110	422-111	422-112	422-113	422-114	422-115	422-116	422-117
M-337	3-1/2"	2"		422-118	422-119	422-120	422-121	422-122	422-123	422-124	422-125	422-126
M-350	3-3/4" H	2"		422-127	422-128	422-129	422-130	422-132	422-133	422-206	422-134	422-135
M-375	3-7/8"	2"		422-300	422-301	422-302	422-303	422-304	422-305	422-306	422-307	422-308
M-387	4"	2"		422-136	422-137	422-138	422-139	422-140	422-141	422-142	422-143	422-144
M-425	4-3/8"	2"		422-250	422-251	422-252	422-253	422-254	422-255	422-256	422-257	422-258
M-437	4-1/2"	2"		422-145	422-146	422-147	422-148	422-149	422-150	422-151	422-152	422-153
M-450	4-3/4" P	2"		422-154	422-155	422-156	422-157	422-158	422-159	422-160	422-161	422-162
M-462	4-7/8"	2"		422-163	422-164	422-165	422-166	422-167	422-168	422-169	422-170	422-171
M-487	5"	2"		422-172	422-173	422-174	422-175	422-176	422-177	422-178	422-179	422-180
M-537	5-1/2"	2"		422-230	422-231	422-232	422-233	422-234	422-235	422-236	422-237	422-238
M-587	6"	2"		422-240	422-241	422-242	422-243	422-244	422-245	422-246	422-247	422-248

Margo Plug Accessories

Margo Support Plate - can be installed over the end of the margo and anchored into the ground to provide additional support in higher pressure applications.

Ball Valves - can be attached to the end of the margo plug to provide control in an open or closed position.

Margo Adapters - can be attached to from the margo plug nut to the drill rod, allowing the power of the drill to tighten the plug in the hole.



PART #	DESCRIPTION
422-600	MARGO SUPPORT PLATE FOR 1/2" PIPE
422-601	MARGO SUPPORT PLATE FOR 1" PIPE
422-602	MARGO SUPPORT PLATE FOR 2" PIPE
46-01-050	1/2" BRASS BALL VALVE
46-01-100	1" BRASS BALL VALVE
46-01-200	2" BRASS BALL VALVE
422-BW/L	'B' MARGO ADAPTER
422-NW/L	'N' MARGO ADAPTER
422-HW/L	'H' MARGO ADAPTER
422-PW/L	'P' MARGO ADAPTER